



US010880836B2

(12) **United States Patent**
Tofighbakhsh et al.

(10) **Patent No.:** **US 10,880,836 B2**

(45) **Date of Patent:** **Dec. 29, 2020**

(54) **BEAM PROVISIONING FOR SENSORY DATA COLLECTION FOR 5G OR OTHER NEXT GENERATION NETWORKS**

(56) **References Cited**

U.S. PATENT DOCUMENTS

(71) Applicant: **AT&T Intellectual Property I, L.P.**,
Atlanta, GA (US)

6,067,457 A 5/2000 Erickson et al.
6,192,232 B1 2/2001 Iseyama
(Continued)

(72) Inventors: **Mostafa Tofighbakhsh**, Cupertino, CA (US); **Shraboni Jana**, Danville, CA (US); **Bogdan Ungureanu**, Holmdel, NJ (US); **Deva-Datta Sharma**, San Ramon, CA (US); **Rittwik Jana**, Montville, NJ (US)

FOREIGN PATENT DOCUMENTS

CN 102984758 A 3/2013
WO 2010121645 A1 10/2010
(Continued)

OTHER PUBLICATIONS

(73) Assignee: **AT&T INTELLECTUAL PROPERTY I, L.P.**, Atlanta, GA (US)

Kruger, Lennard G. "The First Responder Network (FirstNet) and Next-Generation Communications for Public Safety: Issues for Congress." Congressional Research Service, 2017. 30 pages. <https://psbc.vermont.gov/sites/vern/files/documents/Congressional%20Rept%20FirstNet%20Jan%20202017.pdf>.

(Continued)

(*) Notice: Subject to any disclaimer, the term of this patent is extended or adjusted under 35 U.S.C. 154(b) by 0 days.

Primary Examiner — Faisal Choudhury

(21) Appl. No.: **16/367,648**

(74) Attorney, Agent, or Firm — Amin, Turocy & Watson, LLP

(22) Filed: **Mar. 28, 2019**

(57) **ABSTRACT**

(65) **Prior Publication Data**

US 2020/0314750 A1 Oct. 1, 2020

Deployment of Internet-of-things devices can comprise sensors deployed in remote and hard to reach areas and locations. Due to lack of access to reliable power, these sensors cannot always be connected to a network and also have limited computation power. Consequently, a mechanism can be established to periodically access these sensors and collect data from them. The mechanism can utilize a mobile radio unit device to serve as data collectors. The mobile radio unit device can make use of an adaptive beam scanning to perform sensory data collection via the beam scanning operation. Additionally, the platform can also comprise a radio access network intelligent controller to manage the data collecting radio units by providing specific instructions and data collection methodologies.

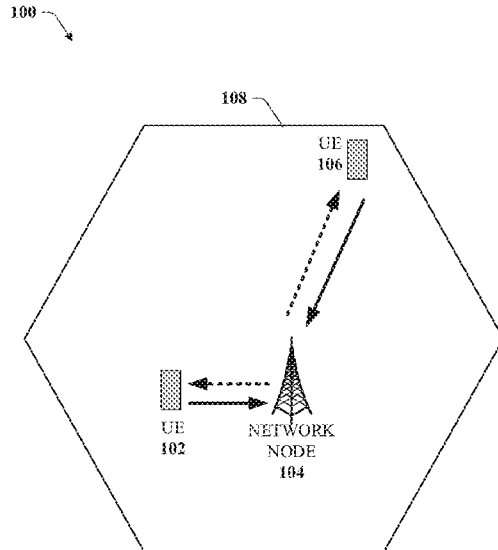
(51) **Int. Cl.**
H04W 4/06 (2009.01)
H04W 52/02 (2009.01)

(52) **U.S. Cl.**
CPC **H04W 52/0229** (2013.01); **H04W 4/06** (2013.01); **H04W 52/0245** (2013.01)

(58) **Field of Classification Search**
CPC ... H04W 76/023; H04W 40/02; H04W 8/005; H04W 52/0229; H04W 52/0245; H04W 4/06

(Continued)

20 Claims, 10 Drawing Sheets



(58) **Field of Classification Search**
 USPC 370/311
 See application file for complete search history.

2019/0004831 A1 1/2019 Sun
 2019/0007879 A1 1/2019 Baek et al.
 2019/0045414 A1 2/2019 Guerreiro et al.
 2019/0095687 A1* 3/2019 Shaw A61B 5/1128
 2019/0150219 A1* 5/2019 Wang H04W 76/30
 370/329
 2019/0223065 A1 7/2019 Lu et al.

(56) **References Cited**

U.S. PATENT DOCUMENTS

7,236,791 B2 6/2007 Chambers et al.
 7,369,559 B2 5/2008 Garakani et al.
 7,747,269 B2 6/2010 Brewer et al.
 7,839,882 B2 11/2010 Soliman
 RE42,242 E 3/2011 Struhsaker
 7,937,068 B2 5/2011 Hogberg et al.
 8,457,591 B2 6/2013 Lambert et al.
 9,307,383 B1 4/2016 Patrick
 9,420,446 B2 8/2016 Brown et al.
 9,526,049 B2 12/2016 Yuk et al.
 9,763,252 B2 9/2017 Kilpatrick et al.
 9,826,557 B2 11/2017 Smith
 10,028,129 B2 7/2018 Ly et al.
 10,034,122 B2 7/2018 Neves et al.
 10,057,774 B2 8/2018 Salkini et al.
 10,085,235 B2 9/2018 Buono et al.
 10,149,193 B2 12/2018 Cui et al.
 10,497,129 B1* 12/2019 Cui G06K 9/4661
 2010/0135205 A1 6/2010 Li et al.
 2010/0182395 A1 7/2010 Delhoyo
 2011/0090888 A1* 4/2011 Arms H02J 7/025
 370/338
 2011/0092248 A1 4/2011 Evanitsky
 2012/0099490 A1* 4/2012 Kummetz H04W 72/0473
 370/280
 2012/0208488 A1 8/2012 Park et al.
 2013/0260732 A1* 10/2013 Singh H04W 4/029
 455/418
 2013/0288645 A1 10/2013 Zheng
 2014/0068700 A1 3/2014 Reilly et al.
 2015/0169768 A1 6/2015 Xu et al.
 2015/0358797 A1 12/2015 Du
 2016/0135242 A1* 5/2016 Hampel H04W 76/14
 370/329
 2017/0019853 A1 1/2017 Ghosh et al.
 2017/0086049 A1 3/2017 Vrzic
 2017/0086119 A1 3/2017 Xu et al.
 2017/0108236 A1* 4/2017 Guan G05B 15/02
 2017/0111228 A1 4/2017 Obaidi et al.
 2017/0134961 A1 5/2017 Ghosh et al.
 2017/0142757 A1 5/2017 Mckibben et al.
 2017/0230809 A1 8/2017 Dm et al.
 2017/0302355 A1 10/2017 Islam et al.
 2017/0331577 A1 11/2017 Parkvall et al.
 2017/0347391 A1 11/2017 Tenny et al.
 2017/0359106 A1 12/2017 Wilson et al.
 2017/0359237 A1 12/2017 Hao et al.
 2018/0068246 A1 3/2018 Crivat et al.
 2018/0069606 A1 3/2018 Jung et al.
 2018/0077615 A1 3/2018 El-najjar et al.
 2018/0152869 A1 5/2018 Cedergren et al.
 2018/0188747 A1* 7/2018 Venturelli G06Q 10/08
 2018/0220340 A1 8/2018 Ramachandra et al.
 2018/0227805 A1 8/2018 Jang et al.
 2018/0255496 A1 9/2018 Kim
 2018/0279213 A1 9/2018 Raghavan et al.
 2018/0279221 A1 9/2018 Fuleshwar et al.
 2018/0302834 A1 10/2018 Zhang et al.
 2018/0338321 A1 11/2018 Shepard et al.
 2018/0343567 A1 11/2018 Ashrafi
 2018/0359654 A1 12/2018 McDonald et al.

FOREIGN PATENT DOCUMENTS

WO 2014069982 A1 5/2014
 WO 2014078917 A1 5/2014
 WO 2017133535 A1 8/2017
 WO 2018026923 A1 2/2018
 WO 2018063436 A1 4/2018
 WO 2018070715 A1 4/2018
 WO 2018088812 A1 5/2018
 WO 2018093948 A1 5/2018
 WO 2018125686 A2 7/2018
 WO 2018134483 A1 7/2018
 WO 2018141945 A1 8/2018
 WO 2018155965 A1 8/2018
 WO 2018175891 A1 9/2018
 WO 2018176385 A1 10/2018
 WO 2019007486 A1 1/2019

OTHER PUBLICATIONS

Braunstein, Brian et al. "Feasibility of Using Distributed Wireless Mesh Networks for Medical Emergency Response." AMIA annual symposium proceedings, American Medical Informatics Association, pp. 86-90, 2006. 5 pages. <https://www.ncbi.nlm.nih.gov/pmc/articles/PMC1839719/>.
 King, Kevin "Verizon unveils public safety private corecore." Verizon, verizon.com, Mar. 30, 2018. 2 pages. <https://web.archive.org/web/20180330134117/https://www.verizon.com/about/news/verizon-unveils-public-safety-private-core>.
 Ramos, Edgar, et al. "Effects of Beamforming and Antenna Configurations on Mobility in 5G NR", Ericsson Research, DOI: 10.13140/RG.2.2.22822.98887, Apr. 2018, 6 pages.
 Ekman, "Machine Learning for Beam Based Mobility Optimization in NR", Master of Science Thesis in Communication Systems Department of Electrical Engineering, Linköping University, 2017. 85 pages.
 Guidolin. "Efficient Spectrum Management as an Enabler Towards 5G Cellular Systems." (2015). 155 pages. http://paduaresearch.cab.unipd.it/7621/1/Guidolin_Francesco_thesis.pdf.
 Wireless Big Data of Smart 5G. Wireless World Research Forum, wwrf.ch, White Paper2, Outlook 20, Nov. 2017. 44 pages. <https://www.wwrf.ch/files/wwrf/content/files/publications/outlook/White%20Paper%202-20Wireless%20Big%20Data%20of%20Smart%205G.pdf>.
 Non-Final Office Action received for U.S. Appl. No. 16/367,697 dated Apr. 20, 2020, 31 pages.
 Non-Final Office Action received for U.S. Appl. No. 16/367,573 dated May 14, 2020, 35 pages.
 Final Office Action received for U.S. Appl. No. 16/367,697 dated Aug. 10, 2020, 43 pages.
 Non-Final Office Action received for U.S. Appl. No. 16/527,789 dated Aug. 21, 2020, 70 pages.
 Final Office Action received for U.S. Appl. No. 16/367,573 dated Oct. 14, 2020, 27 pages.

* cited by examiner

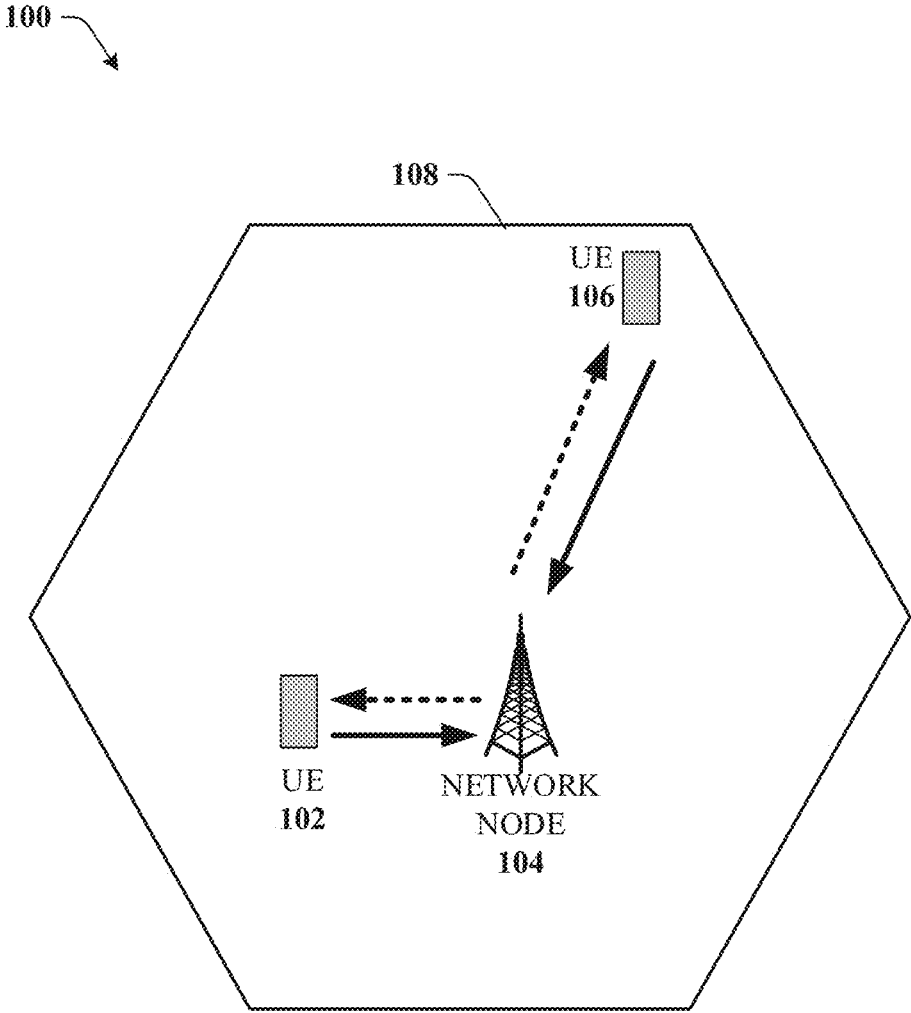


FIG. 1

200

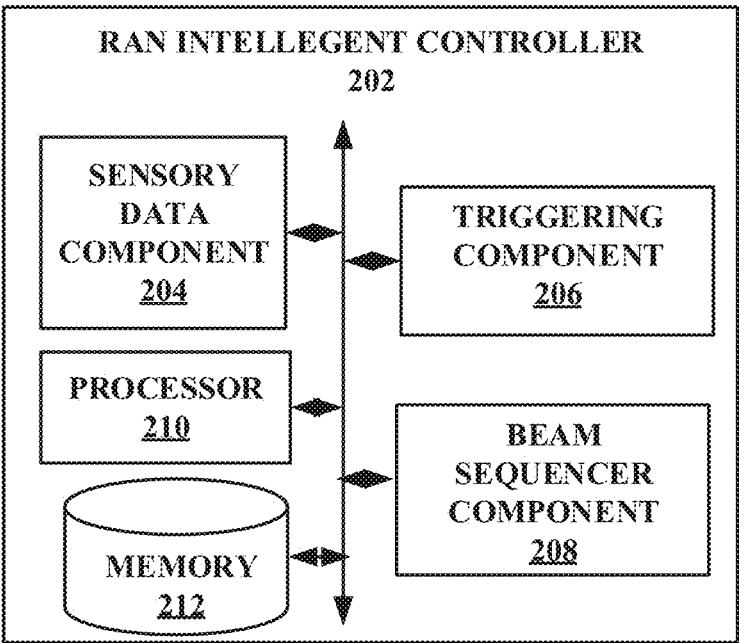


FIG. 2

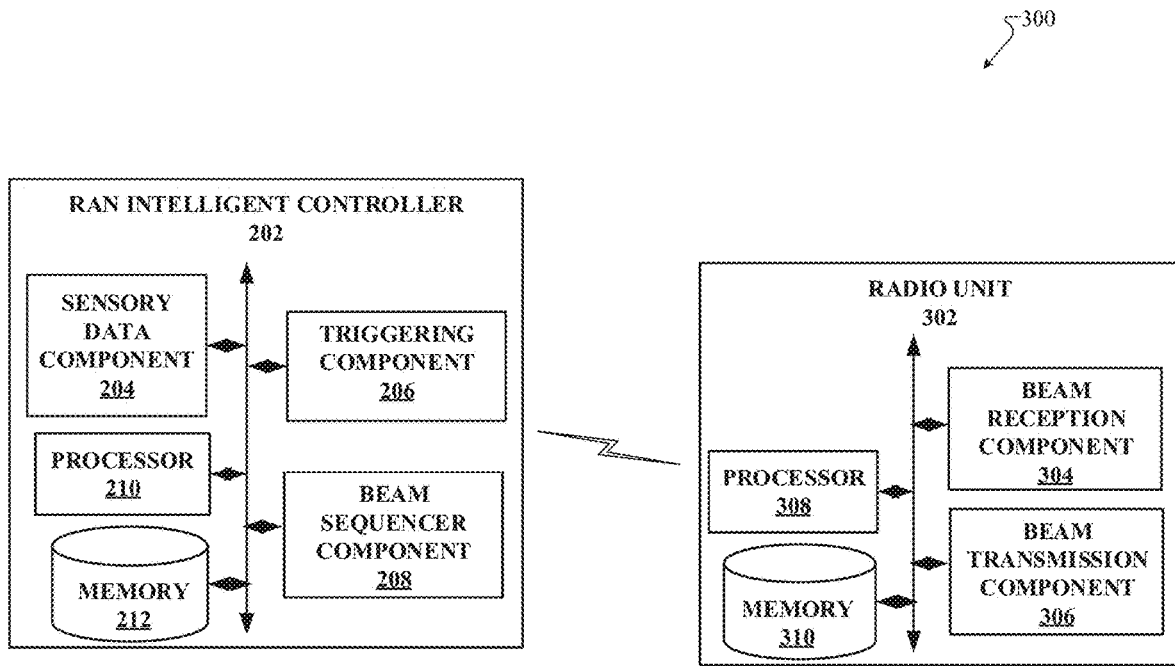


FIG. 3

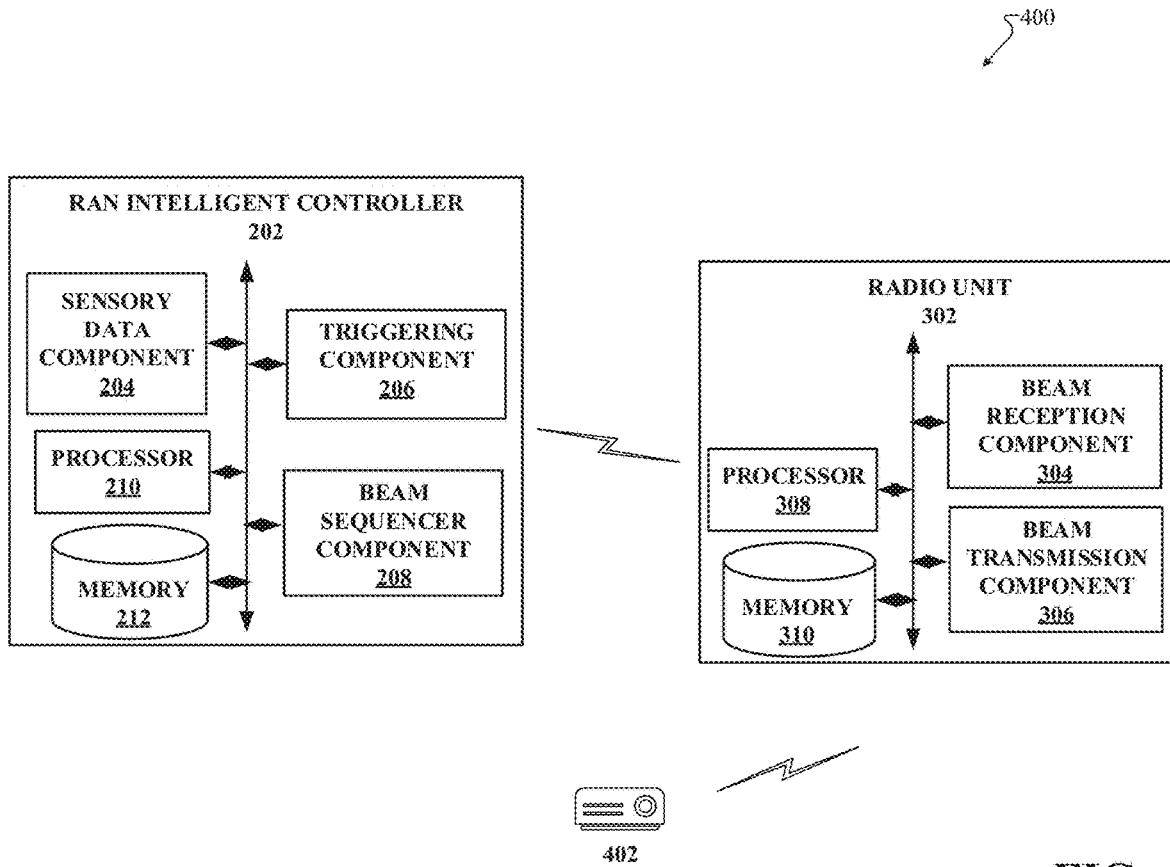


FIG. 4

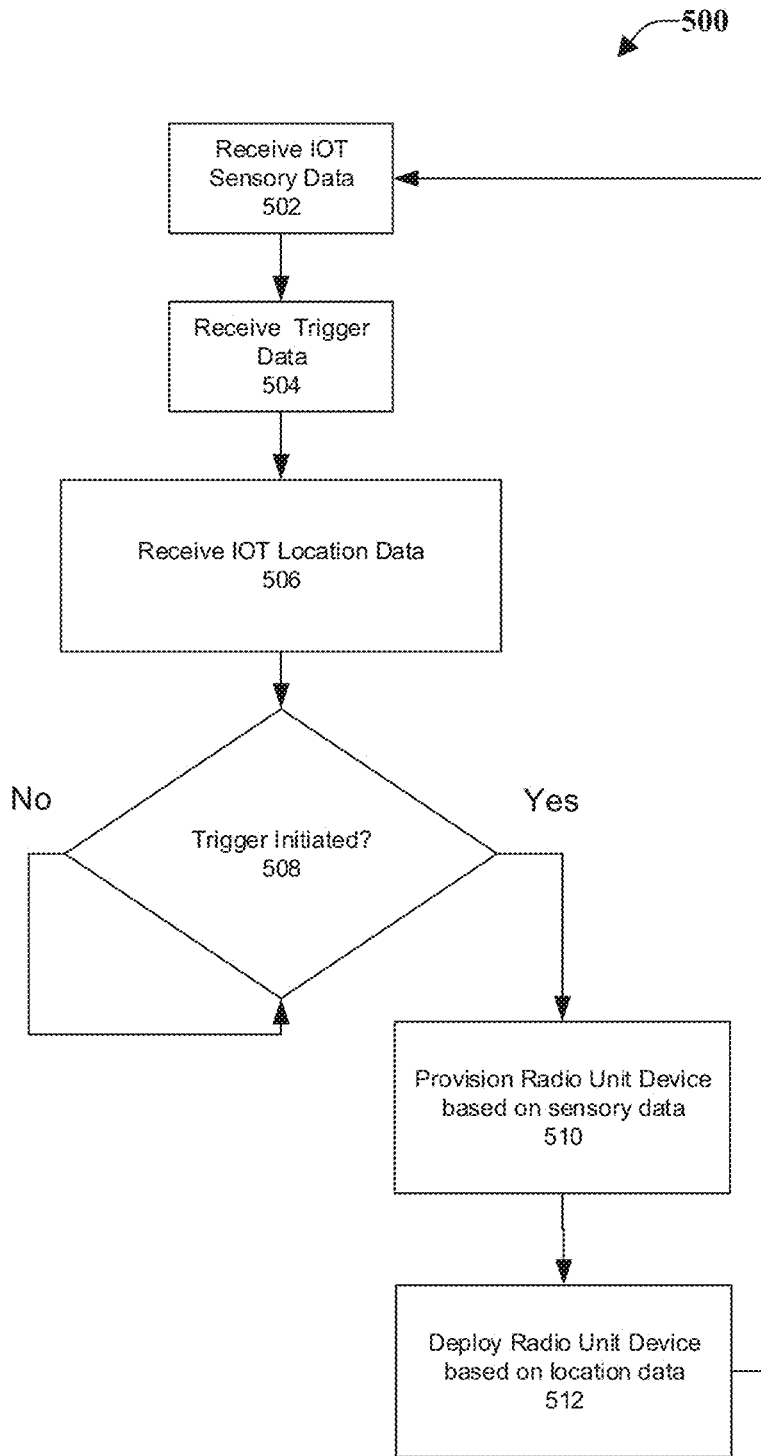


FIG. 5

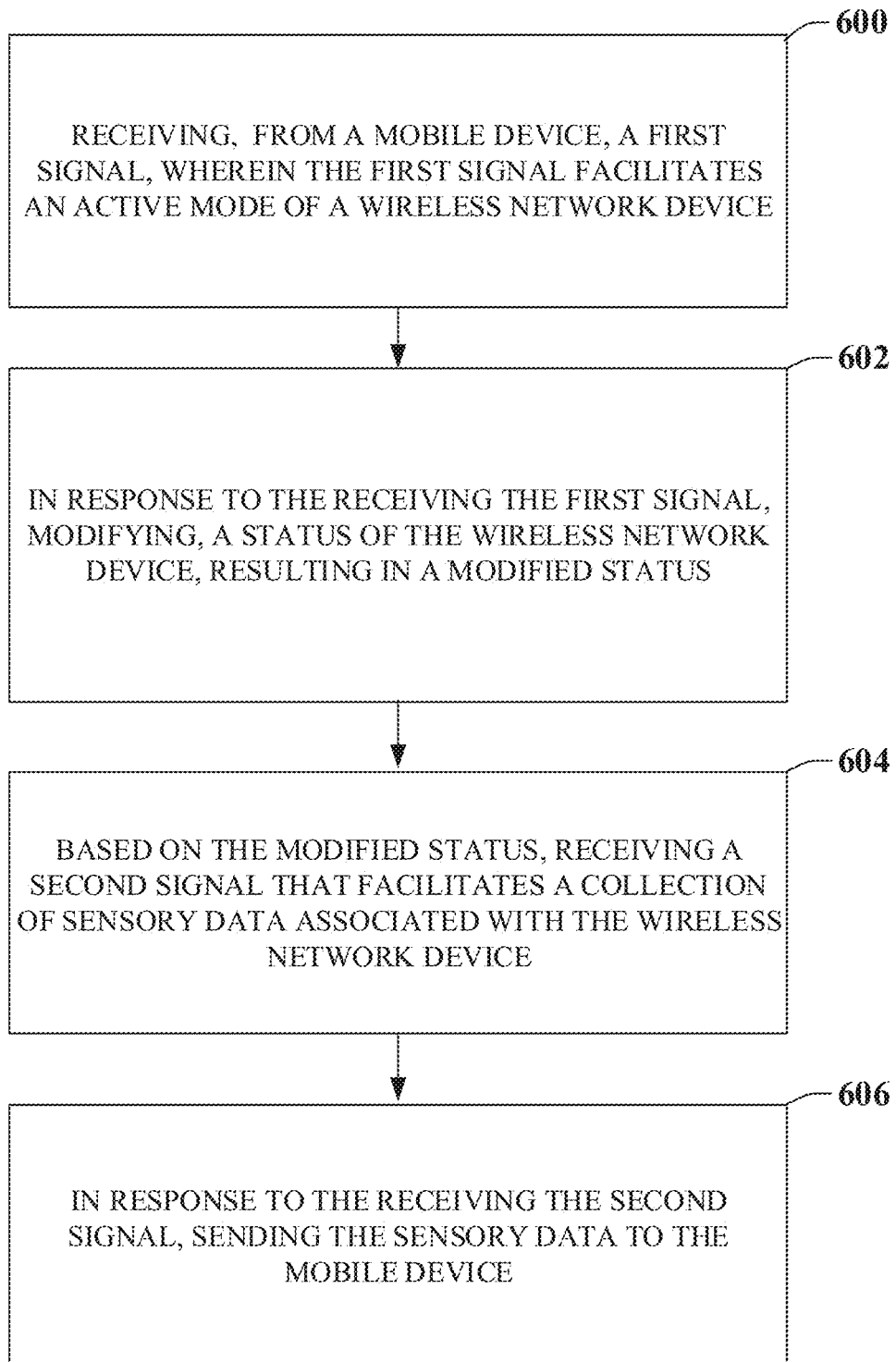
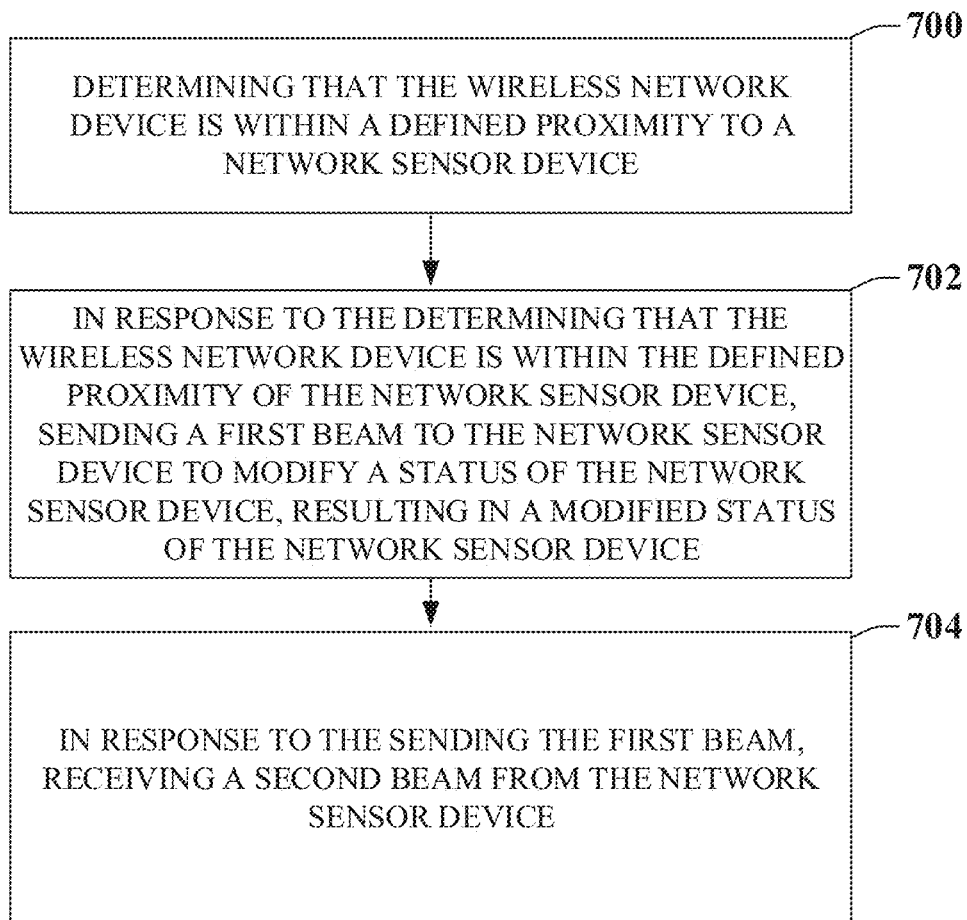


FIG. 6

**FIG. 7**

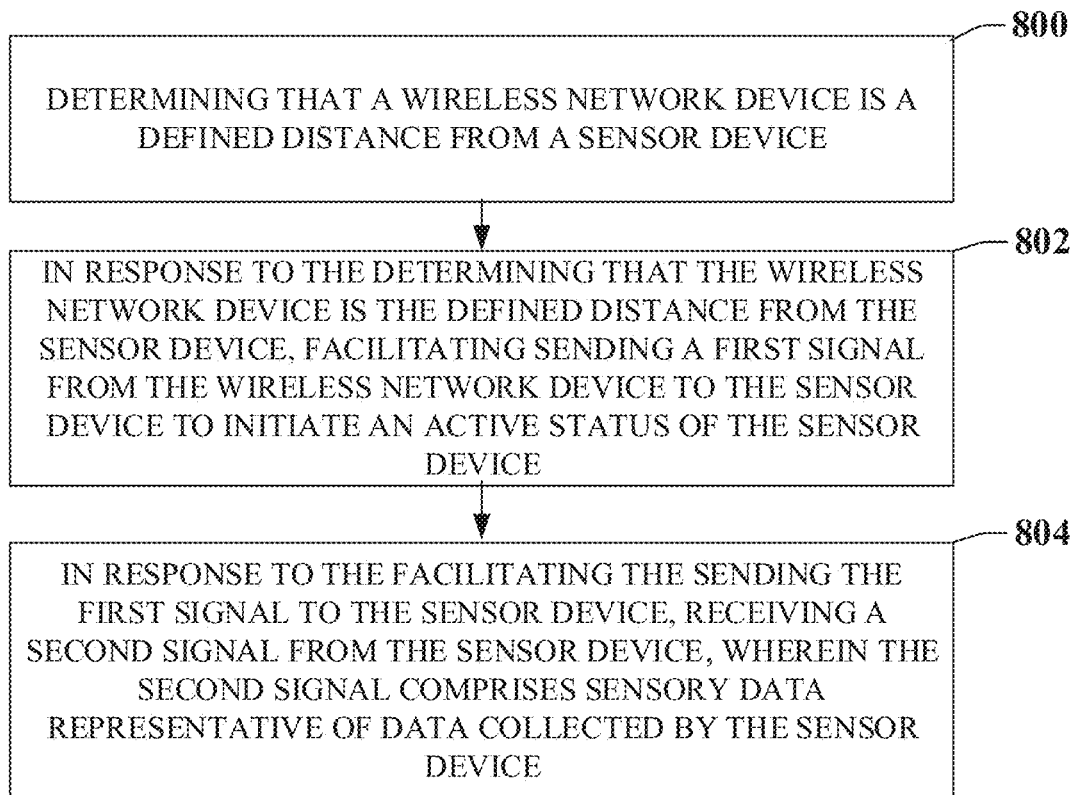


FIG. 8

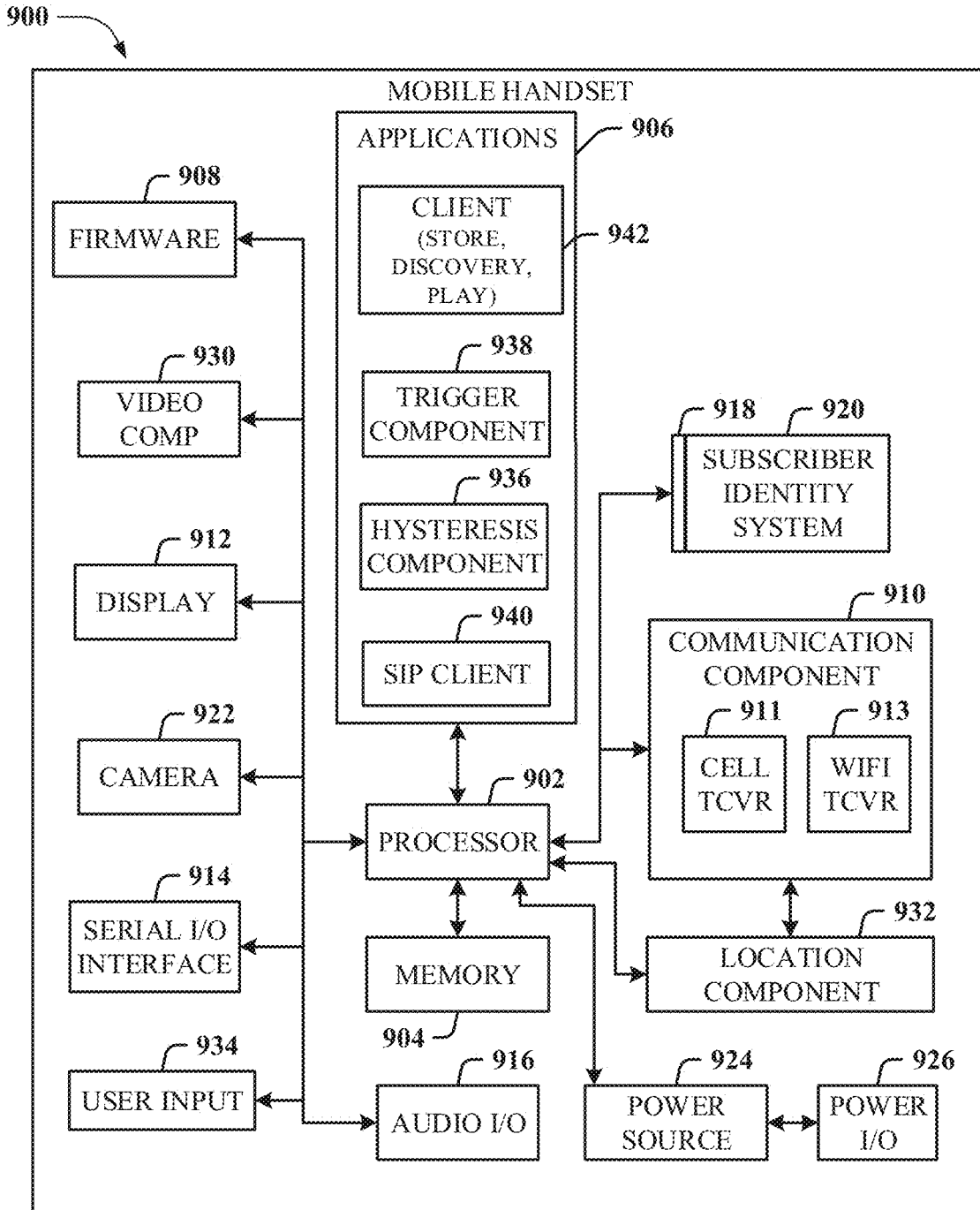


FIG. 9

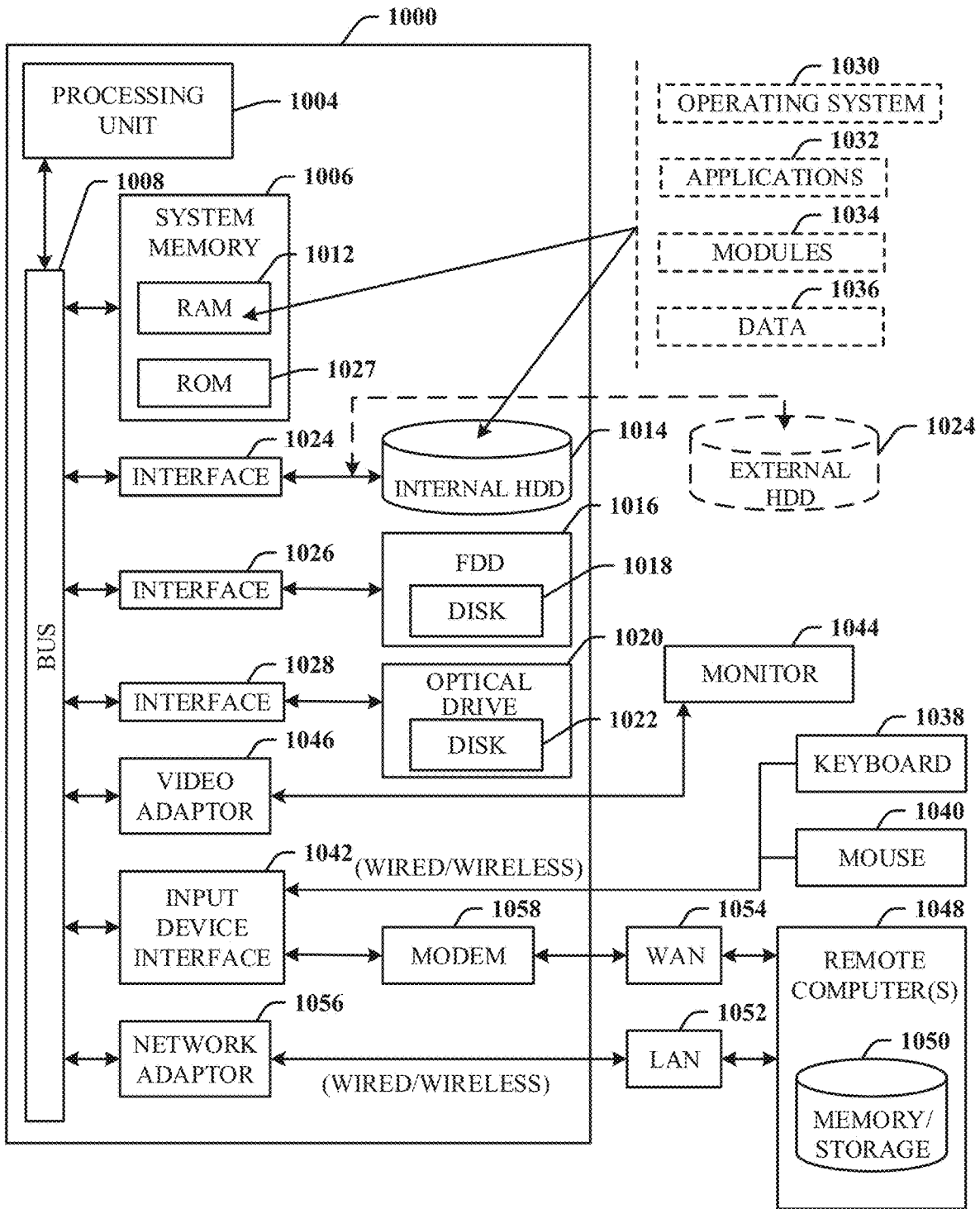


FIG. 10

1

BEAM PROVISIONING FOR SENSORY DATA COLLECTION FOR 5G OR OTHER NEXT GENERATION NETWORKS

TECHNICAL FIELD

This disclosure relates generally to facilitating smart beams for sensory data collection. For example, this disclosure relates to facilitating software defined smart beamforming for sensory data collection for a 5G, or other next generation network, air interface.

BACKGROUND

5th generation (5G) wireless systems represent a next major phase of mobile telecommunications standards beyond the current telecommunications standards of 4th generation (4G). Rather than faster peak Internet connection speeds, 5G planning aims at higher capacity than current 4G, allowing a higher number of mobile broadband users per area unit, and allowing consumption of higher or unlimited data quantities. This would enable a large portion of the population to stream high-definition media many hours per day with their mobile devices, when out of reach of wireless fidelity hotspots. 5G research and development also aims at improved support of machine-to-machine communication, also known as the Internet of things, aiming at lower cost, lower battery consumption, and lower latency than 4G equipment.

The above-described background relating to facilitating smart beams for sensory data collection is merely intended to provide a contextual overview of some current issues, and is not intended to be exhaustive. Other contextual information may become further apparent upon review of the following detailed description.

BRIEF DESCRIPTION OF THE DRAWINGS

Non-limiting and non-exhaustive embodiments of the subject disclosure are described with reference to the following figures, wherein like reference numerals refer to like parts throughout the various views unless otherwise specified.

FIG. 1 illustrates an example wireless communication system in which a network node device (e.g., network node) and user equipment (UE) can implement various aspects and embodiments of the subject disclosure.

FIG. 2 illustrates an example schematic system block diagram of a radio access network intelligent controller according to one or more embodiments.

FIG. 3 illustrates an example schematic system block diagram of a radio access network intelligent controller communicating with a radio unit according to one or more embodiments.

FIG. 4 illustrates an example schematic system block diagram of a system comprising a radio access network intelligent controller, a radio unit, and a sensor device according to one or more embodiments.

FIG. 5 illustrates an example schematic flow diagram of beam provisioning for a radio unit device according to one or more embodiments.

FIG. 6 illustrates an example flow diagram for a method for beam provisioning for sensory data collection according to one or more embodiments.

FIG. 7 illustrates an example flow diagram for a wireless network node device for beam provisioning for sensory data collection according to one or more embodiments.

2

FIG. 8 illustrates an example flow diagram for a machine-readable medium for beam provisioning for sensory data collection according to one or more embodiments.

FIG. 9 illustrates an example block diagram of an example mobile handset operable to engage in a system architecture that facilitates secure wireless communication according to one or more embodiments described herein.

FIG. 10 illustrates an example block diagram of an example computer operable to engage in a system architecture that facilitates secure wireless communication according to one or more embodiments described herein.

DETAILED DESCRIPTION

In the following description, numerous specific details are set forth to provide a thorough understanding of various embodiments. One skilled in the relevant art will recognize, however, that the techniques described herein can be practiced without one or more of the specific details, or with other methods, components, materials, etc. In other instances, well-known structures, materials, or operations are not shown or described in detail to avoid obscuring certain aspects.

Reference throughout this specification to “one embodiment,” or “an embodiment,” means that a particular feature, structure, or characteristic described in connection with the embodiment is included in at least one embodiment. Thus, the appearances of the phrase “in one embodiment,” “in one aspect,” or “in an embodiment,” in various places throughout this specification are not necessarily all referring to the same embodiment. Furthermore, the particular features, structures, or characteristics may be combined in any suitable manner in one or more embodiments.

As utilized herein, terms “component,” “system,” “interface,” and the like are intended to refer to a computer-related entity, hardware, software (e.g., in execution), and/or firmware. For example, a component can be a processor, a process running on a processor, an object, an executable, a program, a storage device, and/or a computer. By way of illustration, an application running on a server and the server can be a component. One or more components can reside within a process, and a component can be localized on one computer and/or distributed between two or more computers.

Further, these components can execute from various machine-readable media having various data structures stored thereon. The components can communicate via local and/or remote processes such as in accordance with a signal having one or more data packets (e.g., data from one component interacting with another component in a local system, distributed system, and/or across a network, e.g., the Internet, a local area network, a wide area network, etc. with other systems via the signal).

As another example, a component can be an apparatus with specific functionality provided by mechanical parts operated by electric or electronic circuitry; the electric or electronic circuitry can be operated by a software application or a firmware application executed by one or more processors; the one or more processors can be internal or external to the apparatus and can execute at least a part of the software or firmware application. As yet another example, a component can be an apparatus that provides specific functionality through electronic components without mechanical parts; the electronic components can include one or more processors therein to execute software and/or firmware that confer(s), at least in part, the functionality of the electronic

components. In an aspect, a component can emulate an electronic component via a virtual machine, e.g., within a cloud computing system.

The words “exemplary” and/or “demonstrative” are used herein to mean serving as an example, instance, or illustration. For the avoidance of doubt, the subject matter disclosed herein is not limited by such examples. In addition, any aspect or design described herein as “exemplary” and/or “demonstrative” is not necessarily to be construed as preferred or advantageous over other aspects or designs, nor is it meant to preclude equivalent exemplary structures and techniques known to those of ordinary skill in the art. Furthermore, to the extent that the terms “includes,” “has,” “contains,” and other similar words are used in either the detailed description or the claims, such terms are intended to be inclusive—in a manner similar to the term “comprising” as an open transition word—without precluding any additional or other elements.

As used herein, the term “infer” or “inference” refers generally to the process of reasoning about, or inferring states of, the system, environment, user, and/or intent from a set of observations as captured via events and/or data. Captured data and events can include user data, device data, environment data, data from sensors, sensor data, application data, implicit data, explicit data, etc. Inference can be employed to identify a specific context or action, or can generate a probability distribution over states of interest based on a consideration of data and events, for example.

Inference can also refer to techniques employed for composing higher-level events from a set of events and/or data. Such inference results in the construction of new events or actions from a set of observed events and/or stored event data, whether the events are correlated in close temporal proximity, and whether the events and data come from one or several event and data sources. Various classification schemes and/or systems (e.g., support vector machines, neural networks, expert systems, Bayesian belief networks, fuzzy logic, and data fusion engines) can be employed in connection with performing automatic and/or inferred action in connection with the disclosed subject matter.

In addition, the disclosed subject matter can be implemented as a method, apparatus, or article of manufacture using standard programming and/or engineering techniques to produce software, firmware, hardware, or any combination thereof to control a computer to implement the disclosed subject matter. The term “article of manufacture” as used herein is intended to encompass a computer program accessible from any computer-readable device, machine-readable device, computer-readable carrier, computer-readable media, or machine-readable media. For example, computer-readable media can include, but are not limited to, a magnetic storage device, e.g., hard disk; floppy disk; magnetic strip(s); an optical disk (e.g., compact disk (CD), a digital video disc (DVD), a Blu-ray Disc™ (BD)); a smart card; a flash memory device (e.g., card, stick, key drive); and/or a virtual device that emulates a storage device and/or any of the above computer-readable media.

As an overview, various embodiments are described herein to facilitate smart beams for sensory data collection for a 5G air interface or other next generation networks. For simplicity of explanation, the methods (or algorithms) are depicted and described as a series of acts. It is to be understood and appreciated that the various embodiments are not limited by the acts illustrated and/or by the order of acts. For example, acts can occur in various orders and/or concurrently, and with other acts not presented or described herein. Furthermore, not all illustrated acts may be required

to implement the methods. In addition, the methods could alternatively be represented as a series of interrelated states via a state diagram or events. Additionally, the methods described hereafter are capable of being stored on an article of manufacture (e.g., a machine-readable storage medium) to facilitate transporting and transferring such methodologies to computers. The term article of manufacture, as used herein, is intended to encompass a computer program accessible from any computer-readable device, carrier, or media, including a non-transitory machine-readable storage medium.

It should be noted that although various aspects and embodiments have been described herein in the context of 5G, Universal Mobile Telecommunications System (UMTS), and/or Long Term Evolution (LTE), or other next generation networks, the disclosed aspects are not limited to 5G, a UMTS implementation, and/or an LTE implementation as the techniques can also be applied in 3G, 4G or LTE systems. For example, aspects or features of the disclosed embodiments can be exploited in substantially any wireless communication technology. Such wireless communication technologies can include UMTS, Code Division Multiple Access (CDMA), Wi-Fi, Worldwide Interoperability for Microwave Access (WiMAX), General Packet Radio Service (GPRS), Enhanced GPRS, Third Generation Partnership Project (3GPP), LTE, Third Generation Partnership Project 2 (3GPP2) Ultra Mobile Broadband (UMB), High Speed Packet Access (HSPA), Evolved High Speed Packet Access (HSPA+), High-Speed Downlink Packet Access (HSDPA), High-Speed Uplink Packet Access (HSUPA), Zigbee, or another IEEE 802.XX technology. Additionally, substantially all aspects disclosed herein can be exploited in legacy telecommunication technologies.

Described herein are systems, methods, articles of manufacture, and other embodiments or implementations that can facilitate smart beams for sensory data collection for a 5G network. Facilitating smart beams for sensory data collection for a 5G network can be implemented in connection with any type of device with a connection to the communications network (e.g., a mobile handset, a computer, a handheld device, etc.) any Internet of things (TOT) device (e.g., toaster, coffee maker, blinds, music players, speakers, etc.), and/or any connected vehicles (cars, airplanes, space rockets, and/or other at least partially automated vehicles (e.g., drones)). In some embodiments the non-limiting term user equipment (UE) is used. It can refer to any type of wireless device that communicates with a radio network node in a cellular or mobile communication system. Examples of UE are target device, device to device (D2D) UE, machine type UE or UE capable of machine to machine (M2M) communication, PDA, Tablet, mobile terminals, smart phone, laptop embedded equipped (LEE), laptop mounted equipment (LME), USB dongles etc. Note that the terms element, elements and antenna ports can be interchangeably used but carry the same meaning in this disclosure. The embodiments are applicable to single carrier as well as to multicarrier (MC) or carrier aggregation (CA) operation of the UE. The term carrier aggregation (CA) is also called (e.g. interchangeably called) “multi-carrier system”, “multi-cell operation”, “multi-carrier operation”, “multi-carrier” transmission and/or reception.

In some embodiments the non-limiting term radio network node or simply network node is used. It can refer to any type of network node that serves UE. It is connected to other network nodes or network elements or any radio node from where UE receives a signal. Examples of radio network nodes are Node B, base station (BS), multi-standard radio

(MSR) node such as MSR BS, eNode B, network controller, radio network controller (RNC), base station controller (BSC), relay, donor node controlling relay, base transceiver station (BTS), access point (AP), transmission points, transmission nodes, RRU, RRH, nodes in distributed antenna system (DAS) etc.

Cloud radio access networks (RAN) can enable the implementation of concepts such as software-defined network (SDN) and network function virtualization (NFV) in 5G networks. This disclosure can facilitate a generic channel state information framework design for a 5G network. Certain embodiments of this disclosure can comprise an SDN controller that can control routing of traffic within the network and between the network and traffic destinations. The SDN controller can be merged with the 5G network architecture to enable service deliveries via open application programming interfaces (“APIs”) and move the network core towards an all internet protocol (“IP”), cloud based, and software driven telecommunications network. The SDN controller can work with, or take the place of policy and charging rules function (“PCRF”) network elements so that policies such as quality of service and traffic management and routing can be synchronized and managed end to end.

To meet the huge demand for data centric applications, 4G standards can be applied 5G, also called new radio (NR) access. 5G networks can comprise the following: data rates of several tens of megabits per second supported for tens of thousands of users; 1 gigabit per second can be offered simultaneously to tens of workers on the same office floor; several hundreds of thousands of simultaneous connections can be supported for massive sensor deployments; spectral efficiency can be enhanced compared to 4G; improved coverage; enhanced signaling efficiency; and reduced latency compared to LTE. In multicarrier system such as OFDM, each subcarrier can occupy bandwidth (e.g., subcarrier spacing). If the carriers use the same bandwidth spacing, then it can be considered a single numerology. However, if the carriers occupy different bandwidth and/or spacing, then it can be considered a multiple numerology.

Deployment of IOT devices involves sensors deployed in remote and hard to reach areas and locations. Due to lack of access to reliable power, these sensors cannot always be connected to a network and also have limited computation power. These sensors are designed to operate in multiple modes including sleep, and active modes. This disclosure provides a mechanism to periodically access these sensors and collect data from them. The mechanism involves a platform whereby a mobile radio unit (RUs) device (e.g., drones, robots, etc.) are used as data collectors. The mobile RU device can make use of an adaptive beam scanning methodology to perform sensory data collection via a beam scanning operation. The platform can also include functionality in a radio access network intelligent controller (RIC) to manage multiple data collecting RUs with specific instructions and data collection methodologies.

The approximate location of the IOT sensors can be known by the RIC and stored in a software-defined RIC database. The RIC can generate a sequence of beams to establish a session with sensors on an as-needed basis. When mobile data collectors are in the proximity of sensors, the mobile data collectors can perform a multicast function to put the IOT devices in an active mode. The mobile data collectors can then it scatter the appropriate beams on the IOT devices to collect their stored data and/or current state of their sensors. The RIC can manage many data collecting RUs with specific instructions & data collection methodologies. IOT sensors can comprise the following applications:

monitoring of agriculture and environment, smart cities, utilities, and/or monitoring bridges and critical infrastructure for safety. Sensors deployed in these use cases cannot afford to continually be connected to the network due to power and computation limitations. In current deployments, these sensors are generally in sleep mode, and they wake-up periodically and broadcast data to the nearest cellular site, which can be miles away. Even in this sporadic transmission mode, the power consumption is significant. Consequently, the data from these sensors can only be collected less frequently.

Thus, a mechanism to control how frequently data is collected, rather than depend upon the sensor design, can be utilized to generate network efficiencies. In the proposed mechanism, mobile data collection devices (e.g., drones, robots, etc.) equipped with multi-radio access technologies can scatter a sequence of calculated beams on the IOT sensors to wake the sensors up and perform sensory data collection. The proposed mechanism can leverage the RIC to provide needed intelligence. Given that the approximate location of the IOT sensors are known and/or updated into the RIC database, the RIC can create a sequence of beams to establish a session with sensors on an as-needed basis. When mobile data collectors are in the proximity of sensor, the mobile data collectors can perform a multicast function to put the IOT devices in an active mode. Then, the mobile device data collectors can scatter the appropriate beams on them to collect their stored and/or current state of the sensors.

A RIC beam control engine can react to triggers or time intervals to form a beam against each of the sensors in the RIC database. Once a trigger is triggered, the RIC can provide the shortest path to the RU to the sensor device. Triggers can be weather conditions, time, events, etc. The RUs can then form a set of data collection beams. The policy indicators in the data store can provide the type and reach required for each beam from a specific radio in the vicinity. Specific beam forming algorithms or methods can be created based on a time interval or other triggers that are classified for sensory data collection operations. The IOT and sensory beam pattern control can continuously wait on a queue for a next triggering event. Then, the system can utilize the stored instructions to form the beam. The applications responsible for sensory data collection can be awakened and data collection starts and terminates. Depending on the sensory data set instruction set, evaluation, and/or classification, the workload for the specific data collection can begin when low-cost, low-power, low-computation sensors are deployed in remote and hard to reach locations. For these sensors, power/battery life is at premium.

Mobile data collection devices equipped with 5G RU's. Examples of mobile data collection devices are drones, robots, and/or other mobile equipment. The RIC can contain knowledge of sensor locations and data collection policies, and the RIC beam control can instruct mobile data collection devices on when to collect data and where to collect data. Based on the instructions from RIC, the mobile RU can form a beam to focus on sensors in RIC database. Specific beamforming algorithms or methods can be developed when time interval or other triggers are classified for sensory data collection operations. The engine of IOT and sensory beam pattern control can continuously wait on a queue for next trigger event. Stored data can also be used to facilitate the beamforming. The applications responsible for sensory data collection can awaken the IOT and collect data. The workload for the specific data collection can start depending on the sensory data set, instruction set, and/or evaluation or classification.

Low cost sensory beams that only spike for a moment on an as-needed basis can facilitate a much larger data collection for number of IOT sensors with narrower beams and higher reach. The ability to laser a beam on an IOT device and collect its sensory information periodically can improve the system. Thus, less radios are needed to cover larger spaces. Beams are only generated when there is an external trigger, or a periodic scan of the IOT sensors and can therefore reduce operational expenses and capital expense for specific industries. Rapid provisioning of the beams to capture the needed sensory data among millions of sensors can benefit new industries with low budgets. The states of these sensors can operationally be switched to active or sleep modes (e.g., when the sensor is in sleep mode, it can only be switched to an active state by an electromagnetic signal). Thus, adaptively triggering sensors via beam scanning methods for sensory data collection can be directed to the IOT sensors on an as-needed basis, can provide an increased range and coverage, and can facilitate a lower cost of operation for RIC and Multi-RAT technologies.

In one embodiment, described herein is a method comprising receiving, by a wireless network device comprising a processor and from a mobile device, a first signal, wherein the first signal facilitates an active mode of the wireless network device. In response to the receiving the first signal, the method can comprise modifying, by the wireless network device, a status of the wireless network device, resulting in a modified status. Based on the modified status, the method can comprise receiving, by the wireless network device, a second signal that facilitates a collection of sensory data associated with the wireless network device. Additionally, in response to the receiving the second signal, the method can comprise sending, by the wireless network device, the sensory data to the mobile device.

According to another embodiment, operations of a wireless network device can comprise determining that the wireless network device is within a defined proximity to a network sensor device. In response to the determining that the wireless network device is within the defined proximity of the network sensor device, the wireless network device operations can comprise sending a first beam to the network sensor device to modify a status of the network sensor device, resulting in a modified status of the network sensor device. Furthermore, in response to the sending the first beam, the wireless network device operations can comprise receiving a second beam from the network sensor device.

According to yet another embodiment, described herein is a machine-readable storage medium that can perform the operations comprising determining that a wireless network device is a defined distance from a sensor device. The machine-readable storage medium can perform the operations comprising, in response to the determining that the wireless network device is the defined distance from the sensor device, facilitating sending a first signal from the wireless network device to the sensor device to initiate an active status of the sensor device. Additionally, in response to the facilitating the sending the first signal to the sensor device, the machine-readable storage medium can perform the operations comprising receiving a second signal from the sensor device, wherein the second signal comprises sensory data representative of data collected by the sensor device.

These and other embodiments or implementations are described in more detail below with reference to the drawings.

Referring now to FIG. 1, illustrated is an example wireless communication system **100** in accordance with various aspects and embodiments of the subject disclosure. In one or

more embodiments, system **100** can comprise one or more user equipment UEs **102**, **106**. The non-limiting term user equipment can refer to any type of device that can communicate with a network node in a cellular or mobile communication system. A UE can have one or more antenna panels having vertical and horizontal elements. Examples of a UE comprise a target device, device to device (D2D) UE, machine type UE or UE capable of machine to machine (M2M) communications, personal digital assistant (PDA), tablet, mobile terminals, smart phone, laptop mounted equipment (LME), universal serial bus (USB) dongles enabled for mobile communications, a computer having mobile capabilities, a mobile device such as cellular phone, a laptop having laptop embedded equipment (LEE, such as a mobile broadband adapter), a tablet computer having a mobile broadband adapter, a wearable device, a virtual reality (VR) device, a heads-up display (HUD) device, a smart car, a machine-type communication (MTC) device, and the like. User equipment UE **102** can also comprise IOT devices that communicate wirelessly.

In various embodiments, system **100** is or comprises a wireless communication network serviced by one or more wireless communication network providers. In example embodiments, a UE **102** can be communicatively coupled to the wireless communication network via a network node **104**. The network node (e.g., network node device) can communicate with user equipment (UE), thus providing connectivity between the UE and the wider cellular network. The UE **102** can send transmission type recommendation data to the network node **104**. The transmission type recommendation data can comprise a recommendation to transmit data via a closed loop MIMO mode and/or a rank-1 precoder mode.

A network node can have a cabinet and other protected enclosures, an antenna mast, and multiple antennas for performing various transmission operations (e.g., MIMO operations). Network nodes can serve several cells, also called sectors, depending on the configuration and type of antenna. In example embodiments, the UE **102** can send and/or receive communication data via a wireless link to the network node **104**. The dashed arrow lines from the network node **104** to the UE **102** represent downlink (DL) communications and the solid arrow lines from the UE **102** to the network nodes **104** represents an uplink (UL) communication.

System **100** can further include one or more communication service provider networks that facilitate providing wireless communication services to various UEs, including UE **102**, via the network node **104** and/or various additional network devices (not shown) included in the one or more communication service provider networks. The one or more communication service provider networks can include various types of disparate networks, including but not limited to: cellular networks, femto networks, picocell networks, microcell networks, internet protocol (IP) networks Wi-Fi service networks, broadband service network, enterprise networks, cloud based networks, and the like. For example, in at least one implementation, system **100** can be or include a large scale wireless communication network that spans various geographic areas. According to this implementation, the one or more communication service provider networks can be or include the wireless communication network and/or various additional devices and components of the wireless communication network (e.g., additional network devices and cell, additional UEs, network server devices, etc.). The network node **104** can be connected to the one or more communication service provider networks via one or

more backhaul links **108**. For example, the one or more backhaul links **108** can comprise wired link components, such as a T1/E1 phone line, a digital subscriber line (DSL) (e.g., either synchronous or asynchronous), an asymmetric DSL (ADSL), an optical fiber backbone, a coaxial cable, and the like. The one or more backhaul links **108** can also include wireless link components, such as but not limited to, line-of-sight (LOS) or non-LOS links which can include terrestrial air-interfaces or deep space links (e.g., satellite communication links for navigation).

Wireless communication system **100** can employ various cellular systems, technologies, and modulation modes to facilitate wireless radio communications between devices (e.g., the UE **102** and the network node **104**). While example embodiments might be described for 5G new radio (NR) systems, the embodiments can be applicable to any radio access technology (RAT) or multi-RAT system where the UE operates using multiple carriers e.g. LTE FDD/TDD, GSM/GERAN, CDMA2000 etc.

For example, system **100** can operate in accordance with global system for mobile communications (GSM), universal mobile telecommunications service (UMTS), long term evolution (LTE), LTE frequency division duplexing (LTE FDD), LTE time division duplexing (TDD), high speed packet access (HSPA), code division multiple access (CDMA), wideband CDMA (WCDMA), CDMA2000, time division multiple access (TDMA), frequency division multiple access (FDMA), multi-carrier code division multiple access (MC-CDMA), single-carrier code division multiple access (SC-CDMA), single-carrier FDMA (SC-FDMA), orthogonal frequency division multiplexing (OFDM), discrete Fourier transform spread OFDM (DFT-spread OFDM) single carrier FDMA (SC-FDMA), Filter bank based multi-carrier (FBMC), zero tail DFT-spread-OFDM (ZT DFT-s-OFDM), generalized frequency division multiplexing (GFDM), fixed mobile convergence (FMC), universal fixed mobile convergence (UFMC), unique word OFDM (UW-OFDM), unique word DFT-spread OFDM (UW DFT-Spread-OFDM), cyclic prefix OFDM CP-OFDM, resource-block-filtered OFDM, Wi Fi, WLAN, WiMax, and the like. However, various features and functionalities of system **100** are particularly described wherein the devices (e.g., the UEs **102** and the network device **104**) of system **100** are configured to communicate wireless signals using one or more multi carrier modulation schemes, wherein data symbols can be transmitted simultaneously over multiple frequency subcarriers (e.g., OFDM, CP-OFDM, DFT-spread OFDM, UFMC, FBMC, etc.). The embodiments are applicable to single carrier as well as to multicarrier (MC) or carrier aggregation (CA) operation of the UE. The term carrier aggregation (CA) is also called (e.g. interchangeably called) “multi-carrier system”, “multi-cell operation”, “multi-carrier operation”, “multi-carrier” transmission and/or reception. Note that some embodiments are also applicable for Multi RAB (radio bearers) on some carriers (that is data plus speech is simultaneously scheduled).

In various embodiments, system **100** can be configured to provide and employ 5G wireless networking features and functionalities. 5G wireless communication networks are expected to fulfill the demand of exponentially increasing data traffic and to allow people and machines to enjoy gigabit data rates with virtually zero latency. Compared to 4G, 5G supports more diverse traffic scenarios. For example, in addition to the various types of data communication between conventional UEs (e.g., phones, smartphones, tablets, PCs, televisions, Internet enabled televisions, etc.) supported by 4G networks, 5G networks can be employed to

support data communication between smart cars in association with driverless car environments, as well as machine type communications (MTCs). Considering the drastic different communication needs of these different traffic scenarios, the ability to dynamically configure waveform parameters based on traffic scenarios while retaining the benefits of multi carrier modulation schemes (e.g., OFDM and related schemes) can provide a significant contribution to the high speed/capacity and low latency demands of 5G networks. With waveforms that split the bandwidth into several sub-bands, different types of services can be accommodated in different sub-bands with the most suitable waveform and numerology, leading to an improved spectrum utilization for 5G networks.

To meet the demand for data centric applications, features of proposed 5G networks may comprise: increased peak bit rate (e.g., 20 Gbps), larger data volume per unit area (e.g., high system spectral efficiency—for example about 3.5 times that of spectral efficiency of long term evolution (LTE) systems), high capacity that allows more device connectivity both concurrently and instantaneously, lower battery/power consumption (which reduces energy and consumption costs), better connectivity regardless of the geographic region in which a user is located, a larger numbers of devices, lower infrastructural development costs, and higher reliability of the communications. Thus, 5G networks may allow for: data rates of several tens of megabits per second should be supported for tens of thousands of users, 1 gigabit per second to be offered simultaneously to tens of workers on the same office floor, for example; several hundreds of thousands of simultaneous connections to be supported for massive sensor deployments; improved coverage, enhanced signaling efficiency; reduced latency compared to LTE.

The upcoming 5G access network may utilize higher frequencies (e.g., >6 GHz) to aid in increasing capacity. Currently, much of the millimeter wave (mmWave) spectrum, the band of spectrum between 30 gigahertz (Ghz) and 300 Ghz is underutilized. The millimeter waves have shorter wavelengths that range from 10 millimeters to 1 millimeter, and these mmWave signals experience severe path loss, penetration loss, and fading. However, the shorter wavelength at mmWave frequencies also allows more antennas to be packed in the same physical dimension, which allows for large-scale spatial multiplexing and highly directional beamforming.

Performance can be improved if both the transmitter and the receiver are equipped with multiple antennas. Multi-antenna techniques can significantly increase the data rates and reliability of a wireless communication system. The use of multiple input multiple output (MIMO) techniques, which was introduced in the third-generation partnership project (3GPP) and has been in use (including with LTE), is a multi-antenna technique that can improve the spectral efficiency of transmissions, thereby significantly boosting the overall data carrying capacity of wireless systems. The use of multiple-input multiple-output (MIMO) techniques can improve mmWave communications, and has been widely recognized a potentially important component for access networks operating in higher frequencies. MIMO can be used for achieving diversity gain, spatial multiplexing gain and beamforming gain. For these reasons, MIMO systems are an important part of the 3rd and 4th generation wireless systems, and are planned for use in 5G systems.

Referring now to FIG. 2, illustrated is an example schematic system block diagram of a radio access network intelligent controller according to one or more embodiments. In the embodiment shown in FIG. 2, the system **200**

11

can comprise a RIC 202 that can comprise sub-components (e.g., sensory data component 204, triggering component 206, and beam sequencer component 208), processor 210 and memory 212 can bi-directionally communicate with each other. It should also be noted that in alternative embodiments that other components including, but not limited to the sub-components, processor 210, and/or memory 212, can be external to the RIC 202. Aspects of the processor 210 can constitute machine-executable component(s) embodied within machine(s), e.g., embodied in one or more computer readable mediums (or media) associated with one or more machines. Such component(s), when executed by the one or more machines, e.g., computer(s), computing device(s), virtual machine(s), etc. can cause the machine(s) to perform the operations described by the RIC 202. In an aspect, the RIC 202 can also include memory 212 that stores computer executable components and instructions.

The sensory data component 204 can receive data associated with various IOT sensors to be monitored by the system 200. For instance, the sensory data component 204 can receive data that indicates that a specific sensor's function is that of sensing light and generating data associated therewith. The triggering component 206 can be configured to determine when a trigger (e.g., time, date, event, weather pattern, etc.) has been determined to occur. For instance, if a trigger for the light sensor is a time (e.g., 9:00 PM) when it is dark and the sensor is believed to be inactive, then triggering component 206 can be configured to update the RIC 202 when the trigger has commenced. Based on the trigger event occurring, the RIC 202 can then utilize its beam sequencer component 208 to generate a beamforming pattern in accordance with the sensor in efforts to facilitate data reception from the sensor.

Referring now to FIG. 3 and FIG. 4, illustrated are example schematic system block diagrams of a system comprising a radio access network intelligent controller, a radio unit, and a sensor device according to one or more embodiments. Repetitive description of like elements employed in other embodiments described herein is omitted for sake of brevity.

In the embodiment shown in FIG. 3, the system 300 can comprise an RU 302 that can comprise sub-components (e.g., beam reception component 304, and beam transmission component 306), processor 308 and memory 310 can bi-directionally communicate with each other. It should also be noted that in alternative embodiments that other components including, but not limited to the sub-components, processor 308, and/or memory 310, can be external to the RU 302.

The systems 300 and 400 can comprise the RIC 202 in communication with an RU 302. As described with reference to FIG. 2, the RIC 202 can generate a beam sequence in accordance with the sensor in efforts to facilitate data reception from the sensor. The beam sequence pattern can be communicated to the RU 302 to facilitate the RU 302 being able to remotely procure sensory data from the sensor device. Thus, the beam transmission component 306 can transmit the beams to the sensor device 402 in accordance with the beam sequence generated by the RIC 202. Prior to transmitting any sequencing beam, the RU 302 can transmit a notification beam to the sensor device 402 to awaken the sensor device 402 from a dormant or sleeping state. Consequently, the beam reception component 304, of the RU 302, can receive beams from the sensor device 402. The beams received from the sensor device 402 can comprise sensory data (e.g., how much light did the light sensor sense today, etc.) that can be stored in the memory 310 of the RU

12

302. Because the RU 302 can be a robot or drone device, the RU 302 can take the sensory data back to the RIC 202 to be stored at the RIC 202 and update the RIC's memory 212.

Referring now to FIG. 5 illustrates an example schematic flow diagram of a beam provisioning system 500 for a radio unit device according to one or more embodiments. At block 502, the system 500 can receive IOT sensor data. For example, the system 500 can receive sensory data regarding what sensor devices are available that can be prompted for data. At block 504, the system 500 can receive trigger data such as what triggers and/or thresholds can be satisfied to prompt the sensor device 402 for data. In addition to the trigger data, the system can receive sensor device 402 location data at block 506. At the decision point block 508, the system 500 can determine if a trigger received at block 504 has been initiated. For example, have certain weather patterns (e.g., rain) occurred. If the trigger has been initiated at the decision point block 508, then the system 500 can provision the RU 302 based on the sensory data received at block 502. It should be noted that in alternative embodiments, the aforementioned steps may not be linear. For example, the RU 302 can be provisioned prior to the triggering event being initiated. The RIC 202 can also send data to the RU 302 to prompt the RU 302 to deploy to the location of the sensor device 402 based on the location data received at block 506. After the RU 302 has received the sensory data from the sensor device 402 and transmitted the data to the RIC 202, the RIC 202 can update its memory 212 so that the newly received sensor data can then be included to facilitate future deployments of the RU 302 to obtain additional sensor data.

Referring now to FIG. 6, illustrated is an example flow diagram for a method for beam provisioning for sensory data collection according to one or more embodiments. At element 600, the method can comprise receiving, from a mobile device (e.g., the RU 302), a first signal, wherein the first signal facilitates an active mode of a wireless network device (e.g., the sensor device 402). In response to the receiving the first signal, at element 602, the method can comprise modifying (e.g., via the RU 302) a status of the wireless network device (e.g., the sensor device 402), resulting in a modified status. Based on the modified status, at element 604, the method can comprise receiving a second signal (e.g., via the RU 302) that facilitates a collection of sensory data associated with the wireless network device (e.g., the sensor device 402). Additionally, in response to the receiving the second signal, the method can comprise sending the sensory data to the mobile device (e.g., via the RU 302) at element 606.

Referring now to FIG. 7, illustrated is an example flow diagram for a wireless network node device for beam provisioning for sensory data collection according to one or more embodiments. At element 700, the wireless network device operations can comprise determining that the wireless network device (e.g., the RU 302) is within a defined proximity to a network sensor device 402. In response to the determining that the wireless network device (e.g., the RU 302) is within the defined proximity of the network sensor device 402 at element 702, the wireless network device (e.g., via the RU 302) operations can comprise sending a first beam to the network sensor device (e.g., the sensor device 402) to modify a status of the network sensor device 402, resulting in a modified status of the network sensor device (e.g., the sensor device 402). Furthermore, in response to the sending the first beam, the wireless network device (e.g., via

the RU 302) operations can comprise receiving a second beam from the network sensor device (e.g., the sensor device 402) at element 704.

Referring now to FIG. 8, illustrated is an example flow diagram for a machine-readable medium for beam provisioning for sensory data collection according to one or more embodiments. At element 800, a machine-readable storage medium can perform the operations comprising determining that a wireless network device (e.g., RU 302) is a defined distance from a sensor device 402. At element 802, the machine-readable storage medium can perform the operations comprising, in response to the determining that the wireless network device is the defined distance from the sensor device, facilitating sending a first signal from the wireless network device (e.g., RU 302) to the sensor device 402 to initiate an active status of the sensor device 402. Additionally, in response to the facilitating the sending the first signal to the sensor device 402, the machine-readable storage medium can perform the operations comprising receiving a second signal from the sensor device 402, wherein the second signal comprises sensory data representative of data collected by the sensor device 402 at element 804.

Referring now to FIG. 9, illustrated is an example block diagram of an example mobile handset 900 operable to engage in a system architecture that facilitates wireless communications according to one or more embodiments described herein. Although a mobile handset is illustrated herein, it will be understood that other devices can be a mobile device, and that the mobile handset is merely illustrated to provide context for the embodiments of the various embodiments described herein. The following discussion is intended to provide a brief, general description of an example of a suitable environment in which the various embodiments can be implemented. While the description includes a general context of computer-executable instructions embodied on a machine-readable storage medium, those skilled in the art will recognize that the innovation also can be implemented in combination with other program modules and/or as a combination of hardware and software.

Generally, applications (e.g., program modules) can include routines, programs, components, data structures, etc., that perform particular tasks or implement particular abstract data types. Moreover, those skilled in the art will appreciate that the methods described herein can be practiced with other system configurations, including single-processor or multiprocessor systems, minicomputers, mainframe computers, as well as personal computers, hand-held computing devices, microprocessor-based or programmable consumer electronics, and the like, each of which can be operatively coupled to one or more associated devices.

A computing device can typically include a variety of machine-readable media. Machine-readable media can be any available media that can be accessed by the computer and includes both volatile and non-volatile media, removable and non-removable media. By way of example and not limitation, computer-readable media can comprise computer storage media and communication media. Computer storage media can include volatile and/or non-volatile media, removable and/or non-removable media implemented in any method or technology for storage of information, such as computer-readable instructions, data structures, program modules, or other data. Computer storage media can include, but is not limited to, RAM, ROM, EEPROM, flash memory or other memory technology, CD ROM, digital video disk (DVD) or other optical disk storage, magnetic cassettes, magnetic tape, magnetic disk storage or other magnetic

storage devices, or any other medium which can be used to store the desired information and which can be accessed by the computer.

Communication media typically embodies computer-readable instructions, data structures, program modules, or other data in a modulated data signal such as a carrier wave or other transport mechanism, and includes any information delivery media. The term “modulated data signal” means a signal that has one or more of its characteristics set or changed in such a manner as to encode information in the signal. By way of example, and not limitation, communication media includes wired media such as a wired network or direct-wired connection, and wireless media such as acoustic, RF, infrared and other wireless media. Combinations of the any of the above should also be included within the scope of computer-readable media.

The handset includes a processor 902 for controlling and processing all onboard operations and functions. A memory 904 interfaces to the processor 902 for storage of data and one or more applications 906 (e.g., a video player software, user feedback component software, etc.). Other applications can include voice recognition of predetermined voice commands that facilitate initiation of the user feedback signals. The applications 906 can be stored in the memory 904 and/or in a firmware 908, and executed by the processor 902 from either or both the memory 904 or/and the firmware 908. The firmware 908 can also store startup code for execution in initializing the handset 900. A communications component 910 interfaces to the processor 902 to facilitate wired/wireless communication with external systems, e.g., cellular networks, VoIP networks, and so on. Here, the communications component 910 can also include a suitable cellular transceiver 911 (e.g., a GSM transceiver) and/or an unlicensed transceiver 913 (e.g., Wi-Fi, WiMax) for corresponding signal communications. The handset 900 can be a device such as a cellular telephone, a PDA with mobile communications capabilities, and messaging-centric devices. The communications component 910 also facilitates communications reception from terrestrial radio networks (e.g., broadcast), digital satellite radio networks, and Internet-based radio services networks.

The handset 900 includes a display 912 for displaying text, images, video, telephony functions (e.g., a Caller ID function), setup functions, and for user input. For example, the display 912 can also be referred to as a “screen” that can accommodate the presentation of multimedia content (e.g., music metadata, messages, wallpaper, graphics, etc.). The display 912 can also display videos and can facilitate the generation, editing and sharing of video quotes. A serial I/O interface 914 is provided in communication with the processor 902 to facilitate wired and/or wireless serial communications (e.g., USB, and/or IEEE 1394) through a hardware connection, and other serial input devices (e.g., a keyboard, keypad, and mouse). This can support updating and troubleshooting the handset 900, for example. Audio capabilities are provided with an audio I/O component 916, which can include a speaker for the output of audio signals related to, for example, indication that the user pressed the proper key or key combination to initiate the user feedback signal. The audio I/O component 916 also facilitates the input of audio signals through a microphone to record data and/or telephony voice data, and for inputting voice signals for telephone conversations.

The handset 900 can include a slot interface 918 for accommodating a SIC (Subscriber Identity Component) in the form factor of a card Subscriber Identity Module (SIM) or universal SIM 920, and interfacing the SIM card 920 with

the processor **902**. However, it is to be appreciated that the SIM card **920** can be manufactured into the handset **900**, and updated by downloading data and software.

The handset **900** can process IP data traffic through the communications component **910** to accommodate IP traffic from an IP network such as, for example, the Internet, a corporate intranet, a home network, a person area network, etc., through an ISP or broadband cable provider. Thus, VoIP traffic can be utilized by the handset **900** and IP-based multimedia content can be received in either an encoded or decoded format.

A video processing component **922** (e.g., a camera) can be provided for decoding encoded multimedia content. The video processing component **922** can aid in facilitating the generation, editing, and sharing of video quotes. The handset **900** also includes a power source **924** in the form of batteries and/or an AC power subsystem, which power source **924** can interface to an external power system or charging equipment (not shown) by a power I/O component **926**.

The handset **900** can also include a video component **930** for processing video content received and, for recording and transmitting video content. For example, the video component **930** can facilitate the generation, editing and sharing of video quotes. A location tracking component **932** facilitates geographically locating the handset **900**. As described hereinabove, this can occur when the user initiates the feedback signal automatically or manually. A user input component **934** facilitates the user initiating the quality feedback signal. The user input component **934** can also facilitate the generation, editing and sharing of video quotes. The user input component **934** can include such conventional input device technologies such as a keypad, keyboard, mouse, stylus pen, and/or touchscreen, for example.

Referring again to the applications **906**, a hysteresis component **936** facilitates the analysis and processing of hysteresis data, which is utilized to determine when to associate with the access point. A software trigger component **938** can be provided that facilitates triggering of the hysteresis component **936** when the Wi-Fi transceiver **913** detects the beacon of the access point. A SIP client **940** enables the handset **900** to support SIP protocols and register the subscriber with the SIP registrar server. The applications **906** can also include a client **942** that provides at least the capability of discovery, play and store of multimedia content, for example, music.

The handset **900**, as indicated above related to the communications component **910**, includes an indoor network radio transceiver **913** (e.g., Wi-Fi transceiver). This function supports the indoor radio link, such as IEEE 802.11, for the dual-mode GSM handset **900**. The handset **900** can accommodate at least satellite radio services through a handset that can combine wireless voice and digital radio chipsets into a single handheld device.

Referring now to FIG. 10, illustrated is an example block diagram of an example computer **1000** operable to engage in a system architecture that facilitates wireless communications according to one or more embodiments described herein. The computer **1000** can provide networking and communication capabilities between a wired or wireless communication network and a server (e.g., Microsoft server) and/or communication device. In order to provide additional context for various aspects thereof, FIG. 10 and the following discussion are intended to provide a brief, general description of a suitable computing environment in which the various aspects of the innovation can be implemented to facilitate the establishment of a transaction between an entity and a third party. While the description above is in the

general context of computer-executable instructions that can run on one or more computers, those skilled in the art will recognize that the innovation also can be implemented in combination with other program modules and/or as a combination of hardware and software.

Generally, program modules include routines, programs, components, data structures, etc., that perform particular tasks or implement particular abstract data types. Moreover, those skilled in the art will appreciate that the inventive methods can be practiced with other computer system configurations, including single-processor or multiprocessor computer systems, minicomputers, mainframe computers, as well as personal computers, handheld computing devices, microprocessor-based or programmable consumer electronics, and the like, each of which can be operatively coupled to one or more associated devices.

The illustrated aspects of the innovation can also be practiced in distributed computing environments where certain tasks are performed by remote processing devices that are linked through a communications network. In a distributed computing environment, program modules can be located in both local and remote memory storage devices.

Computing devices typically include a variety of media, which can include computer-readable storage media or communications media, which two terms are used herein differently from one another as follows.

Computer-readable storage media can be any available storage media that can be accessed by the computer and includes both volatile and nonvolatile media, removable and non-removable media. By way of example, and not limitation, computer-readable storage media can be implemented in connection with any method or technology for storage of information such as computer-readable instructions, program modules, structured data, or unstructured data. Computer-readable storage media can include, but are not limited to, RAM, ROM, EEPROM, flash memory or other memory technology, CD-ROM, digital versatile disk (DVD) or other optical disk storage, magnetic cassettes, magnetic tape, magnetic disk storage or other magnetic storage devices, or other tangible and/or non-transitory media which can be used to store desired information. Computer-readable storage media can be accessed by one or more local or remote computing devices, e.g., via access requests, queries or other data retrieval protocols, for a variety of operations with respect to the information stored by the medium.

Communications media can embody computer-readable instructions, data structures, program modules or other structured or unstructured data in a data signal such as a modulated data signal, e.g., a carrier wave or other transport mechanism, and includes any information delivery or transport media. The term "modulated data signal" or signals refers to a signal that has one or more of its characteristics set or changed in such a manner as to encode information in one or more signals. By way of example, and not limitation, communication media include wired media, such as a wired network or direct-wired connection, and wireless media such as acoustic, RF, infrared and other wireless media.

With reference to FIG. 10, implementing various aspects described herein with regards to the end-user device can include a computer **1000**, the computer **1000** including a processing unit **1004**, a system memory **1006** and a system bus **1008**. The system bus **1008** couples system components including, but not limited to, the system memory **1006** to the processing unit **1004**. The processing unit **1004** can be any of various commercially available processors. Dual microprocessors and other multi-processor architectures can also be employed as the processing unit **1004**.

The system bus **1008** can be any of several types of bus structure that can further interconnect to a memory bus (with or without a memory controller), a peripheral bus, and a local bus using any of a variety of commercially available bus architectures. The system memory **1006** includes read-only memory (ROM) **1027** and random access memory (RAM) **1012**. A basic input/output system (BIOS) is stored in a non-volatile memory **1027** such as ROM, EPROM, EEPROM, which BIOS contains the basic routines that help to transfer information between elements within the computer **1000**, such as during start-up. The RAM **1012** can also include a high-speed RAM such as static RAM for caching data.

The computer **1000** further includes an internal hard disk drive (HDD) **1014** (e.g., EIDE, SATA), which internal hard disk drive **1014** can also be configured for external use in a suitable chassis (not shown), a magnetic floppy disk drive (FDD) **1016**, (e.g., to read from or write to a removable diskette **1018**) and an optical disk drive **1020**, (e.g., reading a CD-ROM disk **1022** or, to read from or write to other high capacity optical media such as the DVD). The hard disk drive **1014**, magnetic disk drive **1016** and optical disk drive **1020** can be connected to the system bus **1008** by a hard disk drive interface **1024**, a magnetic disk drive interface **1026** and an optical drive interface **1028**, respectively. The interface **1024** for external drive implementations includes at least one or both of Universal Serial Bus (USB) and IEEE 1394 interface technologies. Other external drive connection technologies are within contemplation of the subject innovation.

The drives and their associated computer-readable media provide nonvolatile storage of data, data structures, computer-executable instructions, and so forth. For the computer **1000** the drives and media accommodate the storage of any data in a suitable digital format. Although the description of computer-readable media above refers to a HDD, a removable magnetic diskette, and a removable optical media such as a CD or DVD, it should be appreciated by those skilled in the art that other types of media which are readable by a computer **1000**, such as zip drives, magnetic cassettes, flash memory cards, cartridges, and the like, can also be used in the exemplary operating environment, and further, that any such media can contain computer-executable instructions for performing the methods of the disclosed innovation.

A number of program modules can be stored in the drives and RAM **1012**, including an operating system **1030**, one or more application programs **1032**, other program modules **1034** and program data **1036**. All or portions of the operating system, applications, modules, and/or data can also be cached in the RAM **1012**. It is to be appreciated that the innovation can be implemented with various commercially available operating systems or combinations of operating systems.

A user can enter commands and information into the computer **1000** through one or more wired/wireless input devices, e.g., a keyboard **1038** and a pointing device, such as a mouse **1040**. Other input devices (not shown) can include a microphone, an IR remote control, a joystick, a game pad, a stylus pen, touchscreen, or the like. These and other input devices are often connected to the processing unit **1004** through an input device interface **1042** that is coupled to the system bus **1008**, but can be connected by other interfaces, such as a parallel port, an IEEE 1394 serial port, a game port, a USB port, an IR interface, etc.

A monitor **1044** or other type of display device is also connected to the system bus **1008** through an interface, such as a video adapter **1046**. In addition to the monitor **1044**, a

computer **1000** typically includes other peripheral output devices (not shown), such as speakers, printers, etc.

The computer **1000** can operate in a networked environment using logical connections by wired and/or wireless communications to one or more remote computers, such as a remote computer(s) **1048**. The remote computer(s) **1048** can be a workstation, a server computer, a router, a personal computer, portable computer, microprocessor-based entertainment device, a peer device or other common network node, and typically includes many or all of the elements described relative to the computer, although, for purposes of brevity, only a memory/storage device **1050** is illustrated. The logical connections depicted include wired/wireless connectivity to a local area network (LAN) **1052** and/or larger networks, e.g., a wide area network (WAN) **1054**. Such LAN and WAN networking environments are commonplace in offices and companies, and facilitate enterprise-wide computer networks, such as intranets, all of which can connect to a global communications network, e.g., the Internet.

When used in a LAN networking environment, the computer **1000** is connected to the local network **1052** through a wired and/or wireless communication network interface or adapter **1056**. The adapter **1056** can facilitate wired or wireless communication to the LAN **1052**, which can also include a wireless access point disposed thereon for communicating with the wireless adapter **1056**.

When used in a WAN networking environment, the computer **1000** can include a modem **1058**, or is connected to a communications server on the WAN **1054**, or has other means for establishing communications over the WAN **1054**, such as by way of the Internet. The modem **1058**, which can be internal or external and a wired or wireless device, is connected to the system bus **1008** through the input device interface **1042**. In a networked environment, program modules depicted relative to the computer, or portions thereof, can be stored in the remote memory/storage device **1050**. It will be appreciated that the network connections shown are exemplary and other means of establishing a communications link between the computers can be used.

The computer is operable to communicate with any wireless devices or entities operatively disposed in wireless communication, e.g., a printer, scanner, desktop and/or portable computer, portable data assistant, communications satellite, any piece of equipment or location associated with a wirelessly detectable tag (e.g., a kiosk, news stand, restroom), and telephone. This includes at least Wi-Fi and Bluetooth™ wireless technologies. Thus, the communication can be a predefined structure as with a conventional network or simply an ad hoc communication between at least two devices.

Wi-Fi, or Wireless Fidelity, allows connection to the Internet from a couch at home, in a hotel room, or a conference room at work, without wires. Wi-Fi is a wireless technology similar to that used in a cell phone that enables such devices, e.g., computers, to send and receive data indoors and out; anywhere within the range of a base station. Wi-Fi networks use radio technologies called IEEE 802.11 (a, b, g, etc.) to provide secure, reliable, fast wireless connectivity. A Wi-Fi network can be used to connect computers to each other, to the Internet, and to wired networks (which use IEEE 802.3 or Ethernet). Wi-Fi networks operate in the unlicensed 2.4 and 5 GHz radio bands, at an 7 Mbps (802.11a) or 54 Mbps (802.11b) data rate, for example, or with products that contain both bands (dual

band), so the networks can provide real-world performance similar to the basic 16BaseT wired Ethernet networks used in many offices.

An aspect of 5G, which differentiates from previous 4G systems, is the use of NR. NR architecture can be designed to support multiple deployment cases for independent configuration of resources used for RACH procedures. Since the NR can provide additional services than those provided by LTE, efficiencies can be generated by leveraging the pros and cons of LTE and NR to facilitate the interplay between LTE and NR, as discussed herein.

Reference throughout this specification to “one embodiment,” or “an embodiment,” means that a particular feature, structure, or characteristic described in connection with the embodiment is included in at least one embodiment. Thus, the appearances of the phrase “in one embodiment,” “in one aspect,” or “in an embodiment,” in various places throughout this specification are not necessarily all referring to the same embodiment. Furthermore, the particular features, structures, or characteristics can be combined in any suitable manner in one or more embodiments.

As used in this disclosure, in some embodiments, the terms “component,” “system,” “interface,” and the like are intended to refer to, or comprise, a computer-related entity or an entity related to an operational apparatus with one or more specific functionalities, wherein the entity can be either hardware, a combination of hardware and software, software, or software in execution, and/or firmware. As an example, a component can be, but is not limited to being, a process running on a processor, a processor, an object, an executable, a thread of execution, computer-executable instructions, a program, and/or a computer. By way of illustration and not limitation, both an application running on a server and the server can be a component.

One or more components can reside within a process and/or thread of execution and a component can be localized on one computer and/or distributed between two or more computers. In addition, these components can execute from various computer readable media having various data structures stored thereon. The components can communicate via local and/or remote processes such as in accordance with a signal having one or more data packets (e.g., data from one component interacting with another component in a local system, distributed system, and/or across a network such as the Internet with other systems via the signal). As another example, a component can be an apparatus with specific functionality provided by mechanical parts operated by electric or electronic circuitry, which is operated by a software application or firmware application executed by one or more processors, wherein the processor can be internal or external to the apparatus and can execute at least a part of the software or firmware application. As yet another example, a component can be an apparatus that provides specific functionality through electronic components without mechanical parts, the electronic components can comprise a processor therein to execute software or firmware that confer(s) at least in part the functionality of the electronic components. In an aspect, a component can emulate an electronic component via a virtual machine, e.g., within a cloud computing system. While various components have been illustrated as separate components, it will be appreciated that multiple components can be implemented as a single component, or a single component can be implemented as multiple components, without departing from example embodiments.

In addition, the words “example” and “exemplary” are used herein to mean serving as an instance or illustration.

Any embodiment or design described herein as “example” or “exemplary” is not necessarily to be construed as preferred or advantageous over other embodiments or designs. Rather, use of the word example or exemplary is intended to present concepts in a concrete fashion. As used in this application, the term “or” is intended to mean an inclusive “or” rather than an exclusive “or.” That is, unless specified otherwise or clear from context, “X employs A or B” is intended to mean any of the natural inclusive permutations. That is, if X employs A; X employs B; or X employs both A and B, then “X employs A or B” is satisfied under any of the foregoing instances. In addition, the articles “a” and “an” as used in this application and the appended claims should generally be construed to mean “one or more” unless specified otherwise or clear from context to be directed to a singular form.

Moreover, terms such as “mobile device equipment,” “mobile station,” “mobile,” “subscriber station,” “access terminal,” “terminal,” “handset,” “communication device,” “mobile device” (and/or terms representing similar terminology) can refer to a wireless device utilized by a subscriber or mobile device of a wireless communication service to receive or convey data, control, voice, video, sound, gaming or substantially any data-stream or signaling-stream. The foregoing terms are utilized interchangeably herein and with reference to the related drawings. Likewise, the terms “access point (AP),” “Base Station (BS),” “BS transceiver,” “BS device, cell site, cell site device, “Node B (NB),” “evolved Node B (eNode B),” “home Node B (HNB)” and the like, are utilized interchangeably in the application, and refer to a wireless network component or appliance that transmits and/or receives data, control, voice, video, sound, gaming or substantially any data-stream or signaling-stream from one or more subscriber stations. Data and signaling streams can be packetized or frame-based flows.

Furthermore, the terms “device,” “communication device,” “mobile device,” “subscriber,” “customer entity,” “consumer,” “customer entity,” “entity” and the like are employed interchangeably throughout, unless context warrants particular distinctions among the terms. It should be appreciated that such terms can refer to human entities or automated components supported through artificial intelligence (e.g., a capacity to make inference based on complex mathematical formalisms), which can provide simulated vision, sound recognition and so forth.

Embodiments described herein can be exploited in substantially any wireless communication technology, comprising, but not limited to, wireless fidelity (Wi-Fi), global system for mobile communications (GSM), universal mobile telecommunications system (UMTS), worldwide interoperability for microwave access (WiMAX), enhanced general packet radio service (enhanced GPRS), third generation partnership project (3GPP) long term evolution (LTE), third generation partnership project 2 (3GPP2) ultra mobile broadband (UMB), high speed packet access (HSPA), Z-Wave, Zigbee and other 802.XX wireless technologies and/or legacy telecommunication technologies.

The various aspects described herein can relate to New Radio (NR), which can be deployed as a standalone radio access technology or as a non-standalone radio access technology assisted by another radio access technology, such as Long Term Evolution (LTE), for example. It should be noted that although various aspects and embodiments have been described herein in the context of 5G, Universal Mobile Telecommunications System (UMTS), and/or Long Term Evolution (LTE), or other next generation networks, the disclosed aspects are not limited to 5G, a UMTS

implementation, and/or an LTE implementation as the techniques can also be applied in 3G, 4G, or LTE systems. For example, aspects or features of the disclosed embodiments can be exploited in substantially any wireless communication technology. Such wireless communication technologies can include UMTS, Code Division Multiple Access (CDMA), Wi-Fi, Worldwide Interoperability for Microwave Access (WiMAX), General Packet Radio Service (GPRS), Enhanced GPRS, Third Generation Partnership Project (3GPP), LTE, Third Generation Partnership Project 2 (3GPP2) Ultra Mobile Broadband (UMB), High Speed Packet Access (HSPA), Evolved High Speed Packet Access (HSPA+), High-Speed Downlink Packet Access (HSDPA), High-Speed Uplink Packet Access (HSUPA), Zigbee, or another IEEE 802.XX technology. Additionally, substantially all aspects disclosed herein can be exploited in legacy telecommunication technologies.

As used herein, the term “infer” or “inference” refers generally to the process of reasoning about, or inferring states of, the system, environment, user, and/or intent from a set of observations as captured via events and/or data. Captured data and events can include user data, device data, environment data, data from sensors, sensor data, application data, implicit data, explicit data, etc. Inference can be employed to identify a specific context or action, or can generate a probability distribution over states of interest based on a consideration of data and events, for example.

Inference can also refer to techniques employed for composing higher-level events from a set of events and/or data. Such inference results in the construction of new events or actions from a set of observed events and/or stored event data, whether the events are correlated in close temporal proximity, and whether the events and data come from one or several event and data sources. Various classification procedures and/or systems (e.g., support vector machines, neural networks, expert systems, Bayesian belief networks, fuzzy logic, and data fusion engines) can be employed in connection with performing automatic and/or inferred action in connection with the disclosed subject matter.

In addition, the various embodiments can be implemented as a method, apparatus, or article of manufacture using standard programming and/or engineering techniques to produce software, firmware, hardware, or any combination thereof to control a computer to implement the disclosed subject matter. The term “article of manufacture” as used herein is intended to encompass a computer program accessible from any computer-readable device, machine-readable device, computer-readable carrier, computer-readable media, machine-readable media, computer-readable (or machine-readable) storage/communication media. For example, computer-readable media can comprise, but are not limited to, a magnetic storage device, e.g., hard disk; floppy disk; magnetic strip(s); an optical disk (e.g., compact disk (CD), a digital video disc (DVD), a Blu-ray Disc™ (BD)); a smart card; a flash memory device (e.g., card, stick, key drive); and/or a virtual device that emulates a storage device and/or any of the above computer-readable media. Of course, those skilled in the art will recognize many modifications can be made to this configuration without departing from the scope or spirit of the various embodiments.

The above description of illustrated embodiments of the subject disclosure, including what is described in the Abstract, is not intended to be exhaustive or to limit the disclosed embodiments to the precise forms disclosed. While specific embodiments and examples are described herein for illustrative purposes, various modifications are

possible that are considered within the scope of such embodiments and examples, as those skilled in the relevant art can recognize.

In this regard, while the subject matter has been described herein in connection with various embodiments and corresponding figures, where applicable, it is to be understood that other similar embodiments can be used or modifications and additions can be made to the described embodiments for performing the same, similar, alternative, or substitute function of the disclosed subject matter without deviating therefrom. Therefore, the disclosed subject matter should not be limited to any single embodiment described herein, but rather should be construed in breadth and scope in accordance with the appended claims below.

What is claimed is:

1. A drone device, comprising:
 - a processor; and
 - a memory that stores executable instructions that, when executed by the processor, facilitate performance of operations, comprising:
 - in response to a trigger event being determined to have occurred, receiving, from network equipment, instruction data representative of an instruction to send a first beam to a network sensor device, wherein the trigger event is a type of weather;
 - determining that the drone device is within a defined proximity to the network sensor device;
 - in response to determining that the drone device is within the defined proximity of the network sensor device, sending the first beam to the network sensor device to modify a status of the network sensor device, resulting in a modified status of the network sensor device, wherein the modified status is an active status; and
 - in response to sending the first beam, receiving a second beam from the network sensor device.
2. The drone device of claim 1, wherein the first beam comprises a prompt to activate the network sensor device.
3. The drone device of claim 1, wherein the network sensor device is configured to transmit sensory data.
4. The drone device of claim 1, wherein the second beam comprises sensory data generated by the network sensor device.
5. The drone device of claim 1, wherein the drone device is a drone device.
6. The drone device of claim 1, wherein the drone device is a robot device.
7. The drone device of claim 1, wherein the network sensor device is an internet-of-things device.
8. The drone device of claim 1, wherein the first beam is the first beam of beams transmitted by the drone device in a multicast format.
9. A non-transitory machine-readable medium, comprising executable instructions that, when executed by a processor, facilitate performance of operations, comprising:
 - in response to weather of a type of weather being determined to have occurred, receiving, from network equipment, instruction data representative of an instruction to send a first signal to a sensor device;
 - determining that a drone device is a defined distance from the sensor device;
 - in response to determining that the drone device is the defined distance from the sensor device, facilitating sending the first signal from the drone device to the sensor device to initiate an active status of the sensor device; and

23

in response to the facilitating of the sending the first signal to the sensor device, receiving a second signal from the sensor device, wherein the second signal comprises sensory data representative of data collected by the sensor device.

10. The non-transitory machine-readable medium of claim 9, wherein the sensor device is a first sensor device, and wherein the operations further comprise:

facilitating sending a multicast signal to the first sensor device and a second sensor device concurrently.

11. The non-transitory machine-readable medium of claim 10, wherein the multicast signal comprises the first signal.

12. The non-transitory machine-readable medium of claim 10, wherein the operations further comprise:

in response to the facilitating of the sending of the multicast signal, receiving a third signal from the second sensor device.

13. The non-transitory machine-readable medium of claim 12, wherein the third signal comprises state data representative of a current state of the second sensor device.

14. A method, comprising:

in response to a defined triggering event being determined to have occurred, receiving, by a drone device comprising a processor, instruction data representative of an instruction to send a first signal to a network sensor, wherein the trigger event is a type of weather;

receiving, by the drone device, an indication that the drone device is within a defined proximity to the network sensor;

24

in response to receiving the indication, sending, by the drone device, the first signal to the network sensor to modify a status of the network sensor, resulting in a modified status of the network sensor, wherein the modified status is an active status; and

in response to sending the first signal, receiving, by the drone device, a second signal from the network sensor, wherein the second signal comprises sensory data representative of data received by the network sensor.

15. The method of claim 14, further comprising:

receiving, by the drone device, beam sequence data representative of a sequence of beams to be sent to the network sensor.

16. The method of claim 14, wherein the first signal is a narrowband signal.

17. The method of claim 14, wherein the status is modified from a sleep status to the active status.

18. The method of claim 14, wherein sending the first signal is based on a location of the drone device in relation to the network sensor.

19. The method of claim 14, wherein receiving the instruction data is further in response to a condition associated with a time interval being determined to be present.

20. The method of claim 14, wherein receiving the first signal is associated with a multicast function of the drone device.

* * * * *