



US009051043B1

(12) **United States Patent**
Peeters et al.

(10) **Patent No.:** **US 9,051,043 B1**
(45) **Date of Patent:** **Jun. 9, 2015**

- (54) **PROVIDING EMERGENCY MEDICAL SERVICES USING UNMANNED AERIAL VEHICLES**
- (71) Applicant: **Google Inc.**, Mountain View, CA (US)
- (72) Inventors: **Eric Peeters**, Mountain View, CA (US);
Eric Teller, Palo Alto, CA (US);
William Graham Patrick, San Francisco, CA (US)

2007/0049251	A1	3/2007	Mock et al.
2008/0085732	A1	4/2008	Mizuide et al.
2010/0084513	A1	4/2010	Garipey et al.
2010/0256839	A1	10/2010	Fitzpatrick
2010/0280699	A1	11/2010	Bageshwar et al.
2011/0084162	A1	4/2011	Goossen et al.
2011/0128372	A1	6/2011	Malecki et al.
2011/0130636	A1*	6/2011	Daniel et al. 600/301
2011/0267241	A1	11/2011	Grimm et al.
2011/0281679	A1	11/2011	Larrabee et al.
2011/0315806	A1	12/2011	Piasecki et al.
2012/0080556	A1	4/2012	Root, Jr.
2012/0152654	A1	6/2012	Marcus

- (73) Assignee: **Google Inc.**, Mountain View, CA (US)
- (*) Notice: Subject to any disclaimer, the term of this patent is extended or adjusted under 35 U.S.C. 154(b) by 0 days.

OTHER PUBLICATIONS

Mitchell J.H. Lum, et al., Telesurgery Via Unmanned Aerial Vehicle (UAV) with a Field Deployable Surgical Robot, Medicine Meets Virtual Reality 15, Feb. 2007, Long Beach, California.
H.S. Nguyen, et al., Situation Identification by Unmanned Aerial Vehicle, Institute of Mathematics, 2001, pp. 49-56, Warsaw University.
Elizabeth Bone et al., Unmanned Aerial Vehicles: Background and Issues for Congress, Report for Congress, Congressional Research Service, The Library of Congress, Apr. 25, 2003.

- (21) Appl. No.: **13/730,298**
- (22) Filed: **Dec. 28, 2012**

- (51) **Int. Cl.**
B64C 29/00 (2006.01)
B64C 19/00 (2006.01)
G06Q 10/08 (2012.01)
B64C 39/02 (2006.01)
- (52) **U.S. Cl.**
CPC **B64C 19/00** (2013.01); **G06Q 10/083** (2013.01); **B64C 39/024** (2013.01)
- (58) **Field of Classification Search**
CPC G06Q 10/083; B64C 39/024
USPC 701/3
See application file for complete search history.

* cited by examiner

Primary Examiner — Mary Cheung
Assistant Examiner — Yuen Wong
(74) *Attorney, Agent, or Firm* — McDonnell Boehnen Hulbert & Berghoff LLP

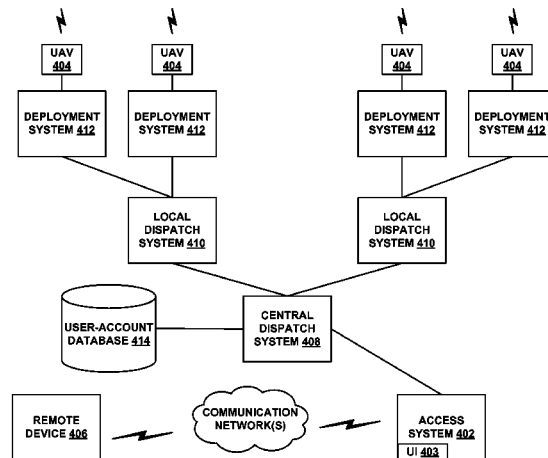
(56) **References Cited**
U.S. PATENT DOCUMENTS

6,056,237	A	5/2000	Woodland
6,567,044	B2	5/2003	Carroll
6,817,573	B2	11/2004	Harrison et al.
6,965,816	B2	11/2005	Walker
7,574,193	B2	8/2009	Hulkkonen et al.
7,813,888	B2	10/2010	Vian et al.
7,877,785	B2	1/2011	Selignan
8,028,952	B2	10/2011	Urnes, Sr.

(57) **ABSTRACT**

Embodiments described herein may help to provide medical support via a fleet of unmanned aerial vehicles (UAVs). An illustrative medical-support system may include multiple UAVs, which are configured to provide medical support for a number of different medical situations. Further, the medical-support system may be configured to: (a) identify a remote medical situation, (b) determine a target location corresponding to the medical situation, (c) select a UAV from the fleet of UAVs, where the selection of the UAV is based on a determination that the selected UAV is configured for the identified medical situation, and (d) cause the selected UAV to travel to the target location to provide medical support.

25 Claims, 6 Drawing Sheets



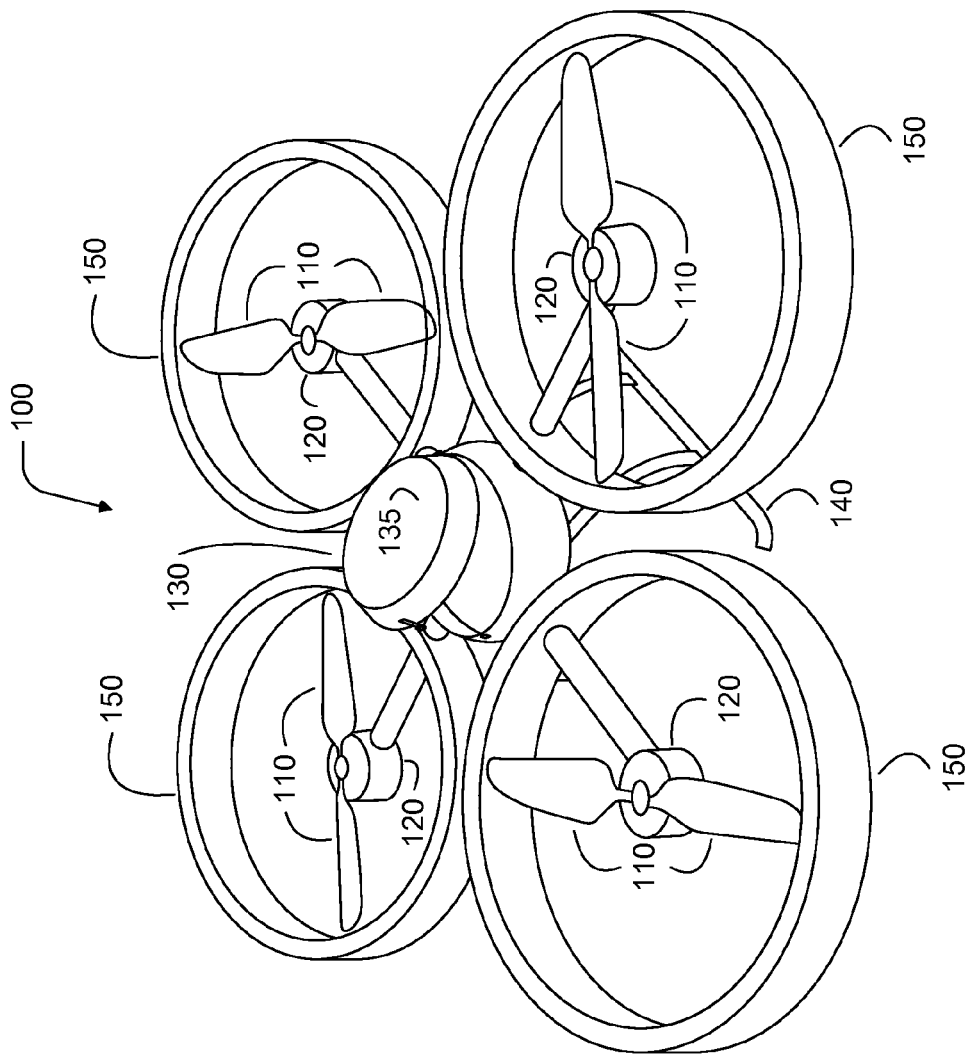


FIGURE 1

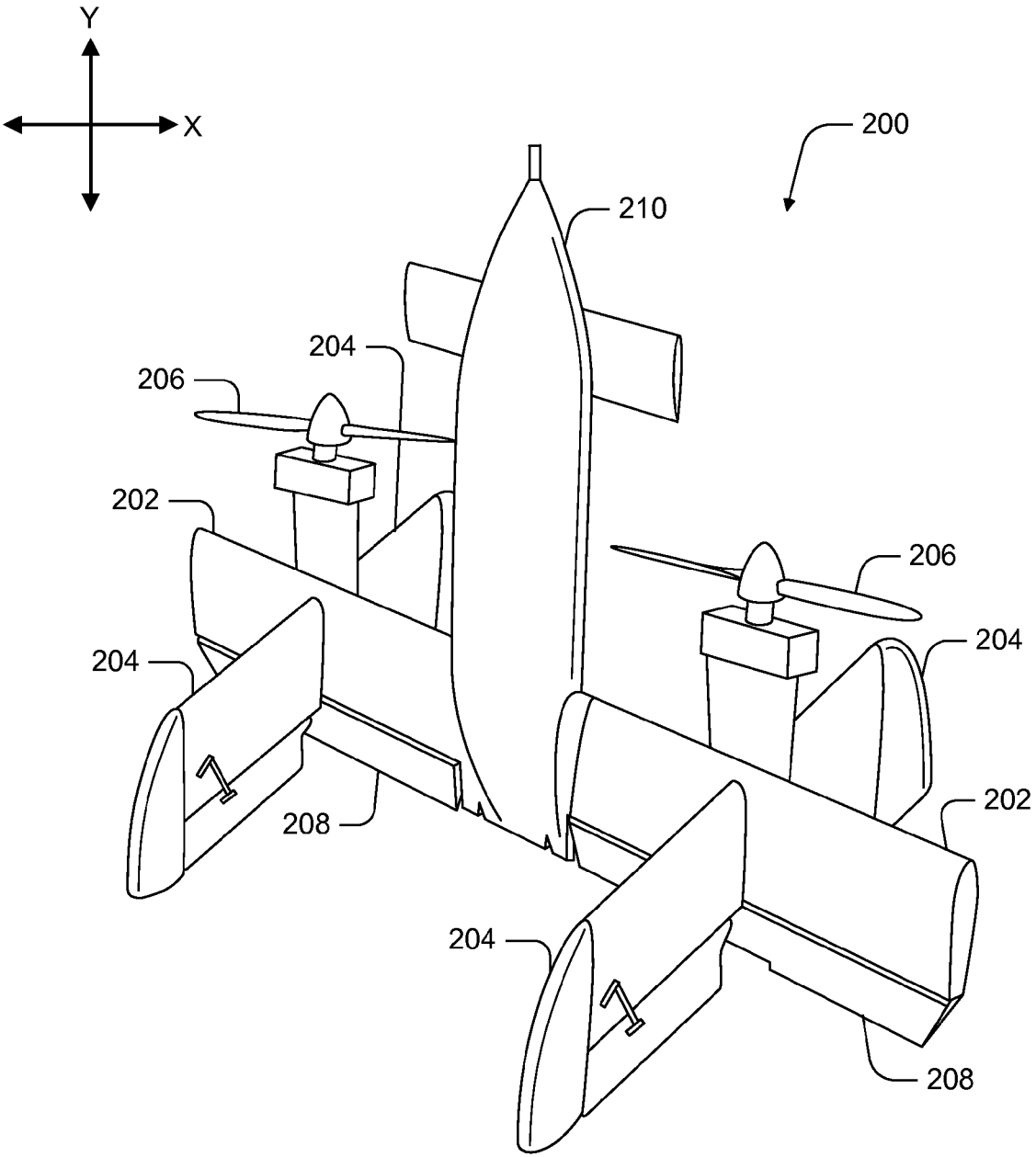


FIGURE 2

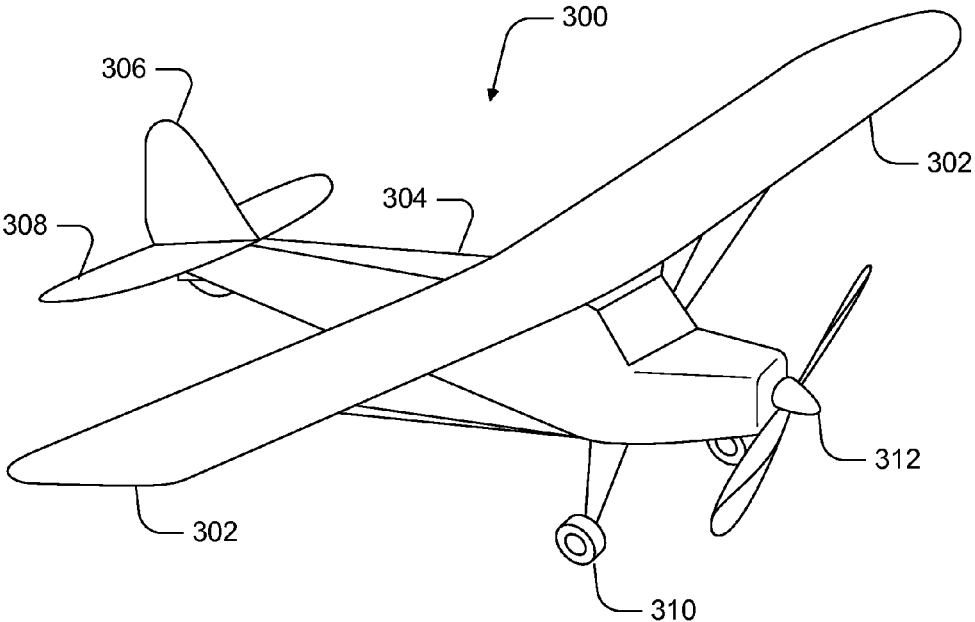


FIGURE 3A

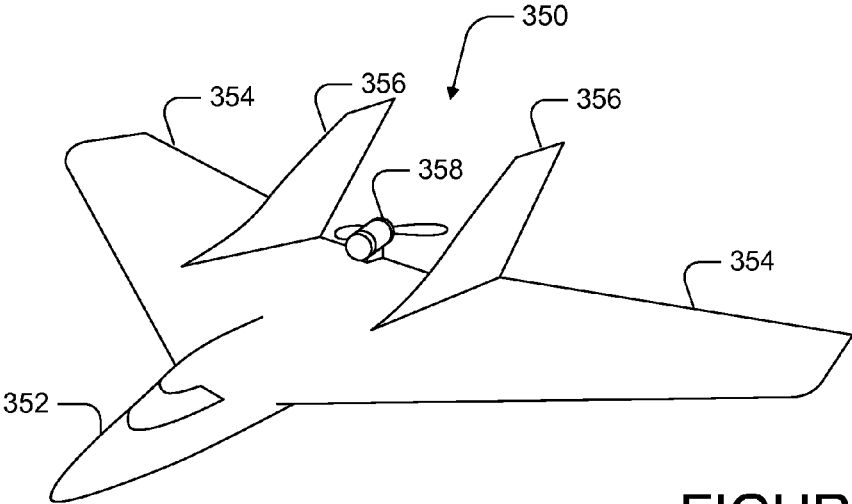
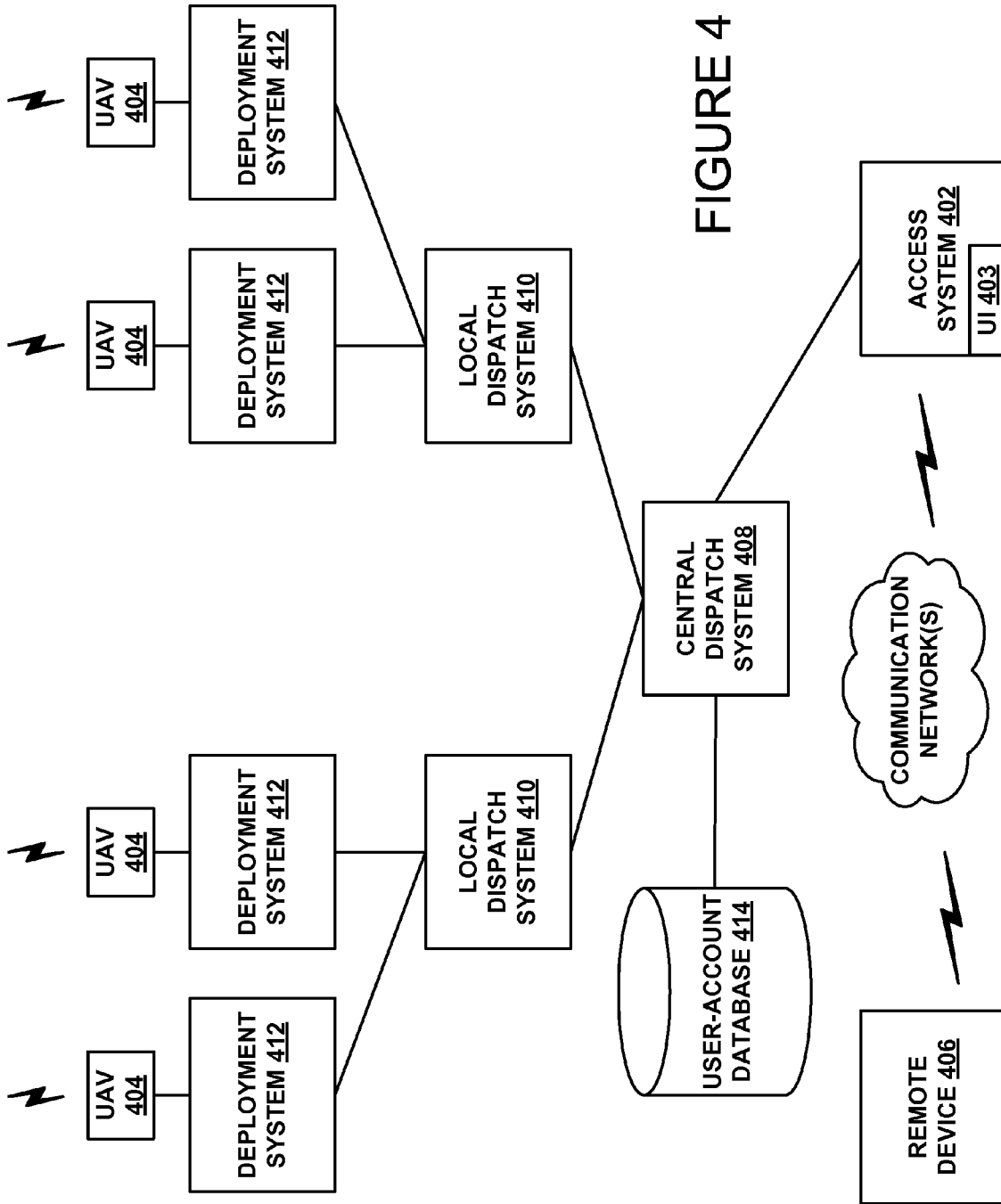


FIGURE 3B



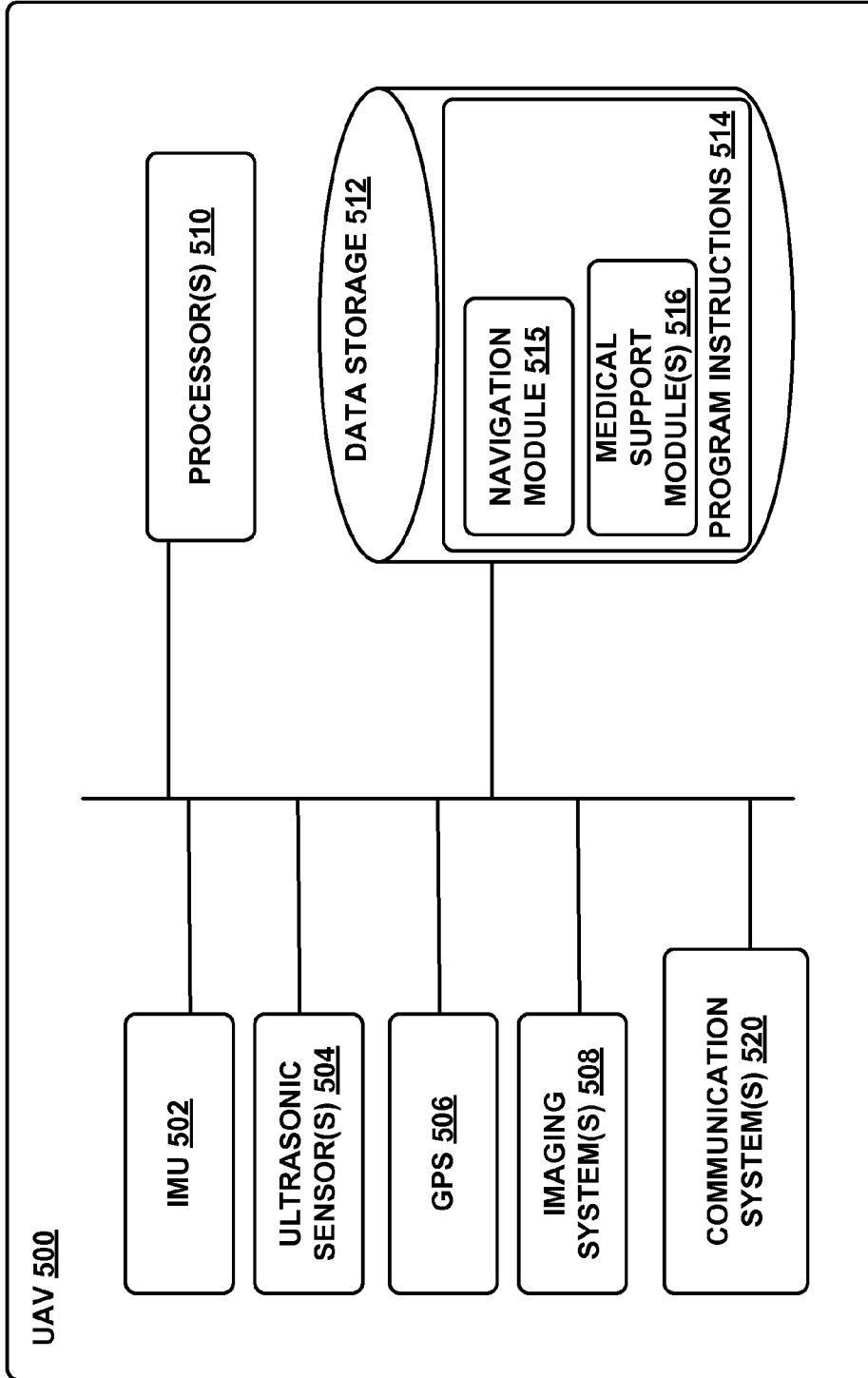


FIGURE 5

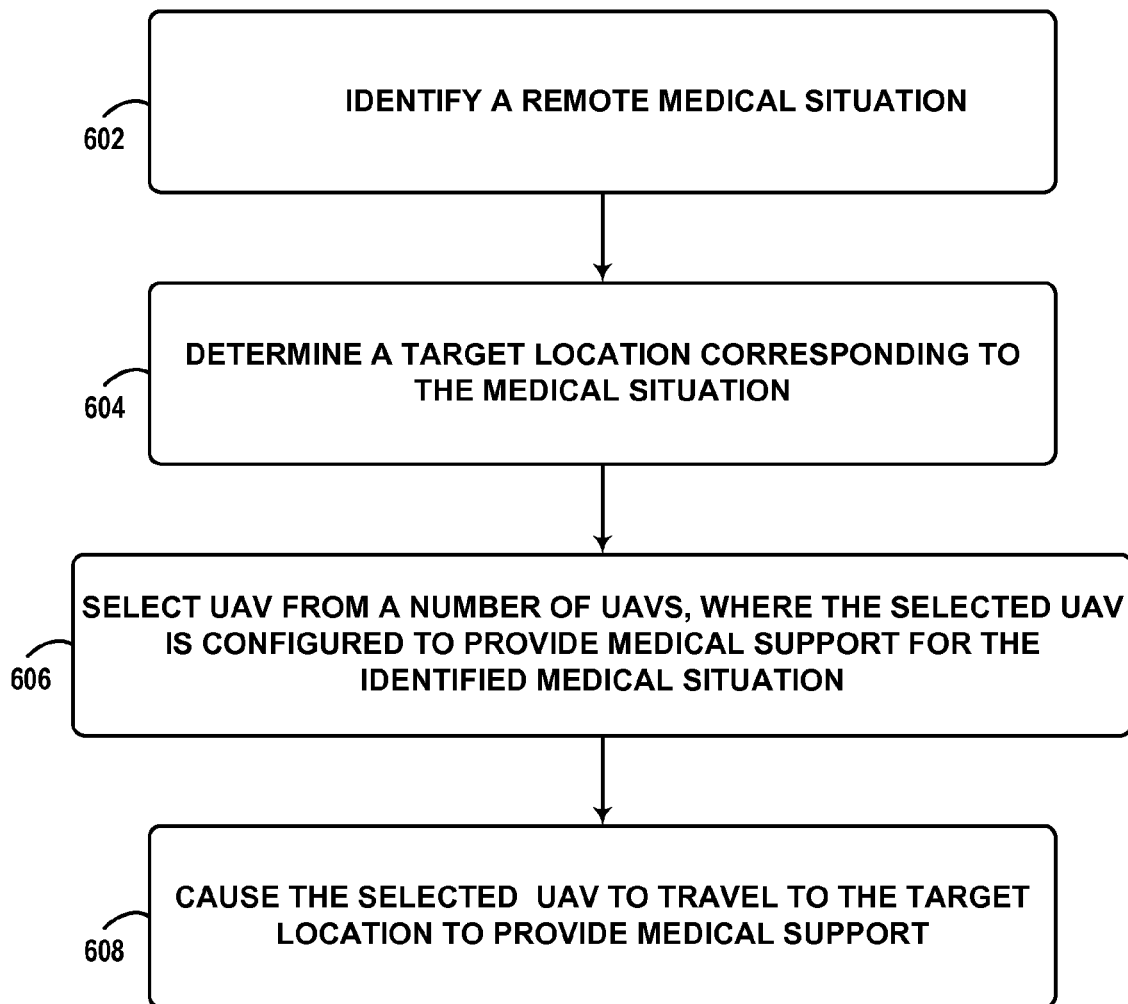


FIG. 6

1

PROVIDING EMERGENCY MEDICAL SERVICES USING UNMANNED AERIAL VEHICLES

BACKGROUND

Unless otherwise indicated herein, the materials described in this section are not prior art to the claims in this application and are not admitted to be prior art by inclusion in this section.

An unmanned vehicle, which may also be referred to as an autonomous vehicle, is a vehicle capable of travel without a physically-present human operator. An unmanned vehicle may operate in a remote-control mode, in an autonomous mode, or in a partially autonomous mode.

When an unmanned vehicle operates in a remote-control mode, a pilot or driver that is at a remote location can control the unmanned vehicle via commands that are sent to the unmanned vehicle via a wireless link. When the unmanned vehicle operates in autonomous mode, the unmanned vehicle typically moves based on pre-programmed navigation waypoints, dynamic automation systems, or a combination of these. Further, some unmanned vehicles can operate in both a remote-control mode and an autonomous mode, and in some instances may do so simultaneously. For instance, a remote pilot or driver may wish to leave navigation to an autonomous system while manually performing another task, such as operating a mechanical system for picking up objects, as an example.

Various types of unmanned vehicles exist for various different environments. For instance, unmanned vehicles exist for operation in the air, on the ground, underwater, and in space. Unmanned vehicles also exist for hybrid operations in which multi-environment operation is possible. Examples of hybrid unmanned vehicles include an amphibious craft that is capable of operation on land as well as on water or a floatplane that is capable of landing on water as well as on land. Other examples are also possible.

SUMMARY

In one aspect, an exemplary computer-implemented method may involve a computing device: (a) identifying a remote medical situation; (b) determining a target location corresponding to the medical situation; (c) selecting an unmanned aerial vehicle (UAV) from a plurality of UAVs, wherein the plurality of UAVs are configured to provide medical support for a plurality of medical situations, and wherein the selection of the UAV is based at least in part on a determination that the selected UAV is configured for the identified medical situation; and (d) causing the selected UAV to travel to the target location to provide medical support.

In a further aspect, a non-transitory computer readable medium may have stored therein instructions that are executable to cause a computing system to perform functions comprising: (a) identifying a remote medical situation; (b) determining a target location corresponding to the medical situation; (c) selecting an unmanned aerial vehicle (UAV) from a plurality of UAVs, wherein the plurality of UAVs are configured to provide medical support for a plurality of medical situations, and wherein the selection of the UAV is based at least in part on a determination that the selected UAV is configured for the identified medical situation; and (d) causing the selected UAV to travel to the target location to provide medical support.

In another aspect, a medical-support system may include at least one non-transitory computer readable medium in at least one component of the system, and program instructions

2

stored in the at least one non-transitory computer readable medium and executable by at least one processor to: (a) identify a remote medical situation; (b) determine a target location corresponding to the medical situation; (d) select an unmanned aerial vehicle (UAV) from a plurality of UAVs, wherein the plurality of UAVs are configured to provide medical support for a plurality of medical situations, and wherein the selection of the UAV is based at least in part on a determination that the selected UAV is configured for the identified medical situation; and (c) cause the selected UAV to travel to the target location to provide medical support.

In yet another aspect, a medical-support system may include: (i) a plurality of unmanned aerial vehicles (UAVs), wherein the plurality of UAVs are configured to provide medical support for a plurality of medical situations; and (ii) at least one component that is configured to: (a) identify a remote medical situation; (b) determine a target location corresponding to the medical situation; (c) select an unmanned aerial vehicle (UAV) from a plurality of UAVs, wherein the selection of the UAV is based at least in part on a determination that the selected UAV is configured for the identified medical situation; and (d) cause the selected UAV to travel to the target location to provide medical support.

These as well as other aspects, advantages, and alternatives, will become apparent to those of ordinary skill in the art by reading the following detailed description, with reference where appropriate to the accompanying drawings.

BRIEF DESCRIPTION OF THE DRAWINGS

FIGS. 1, 2, 3A, and 3B are simplified illustrations of unmanned aerial vehicles, according to example embodiments.

FIG. 4 is a simplified block diagram illustrating a medical support system, according to an example embodiment.

FIG. 5 is a simplified block diagram illustrating components of an unmanned aerial vehicle, according to an example embodiment.

FIG. 6 is a flow chart illustrating a method 600, according to an example embodiment.

DETAILED DESCRIPTION

Exemplary methods and systems are described herein. It should be understood that the word “exemplary” is used herein to mean “serving as an example, instance, or illustration.” Any embodiment or feature described herein as “exemplary” or “illustrative” is not necessarily to be construed as preferred or advantageous over other embodiments or features. More generally, the embodiments described herein are not meant to be limiting. It will be readily understood that certain aspects of the disclosed systems and methods can be arranged and combined in a wide variety of different configurations, all of which are contemplated herein.

I. Overview

Embodiments described herein may relate to and/or may be implemented in a system in which unmanned vehicles, and in particular, “unmanned aerial vehicles” (UAVs), are configured to provide medical support.

In an illustrative embodiment, a medical-support system may include a fleet of UAVs that are distributed throughout a geographic area, such as a city. The medical-support system may be configured for communications with remote devices, such as mobile phones, so that medical support can be requested by a person in need of such medical support (or by

others on behalf of a person in need). The medical-support system can then dispatch the appropriate UAV or UAVs to the scene of the medical situation in order to provide medical support.

In particular, a medical-support system may include a fleet with a number of different types of UAVs, which are configured for different medical situations. For instance, some UAVs may be configured with items and/or functionality that are expected to be helpful in a cardiac-arrest situation, some UAVs may be configured to help a choking victim, some UAVs may be configured to help a trauma victim, and so on. As such, an illustrative medical-support system may be configured to identify or classify the particular type of medical situation that is occurring, to select the appropriate UAV from those that are available, and to dispatch the selected UAV to the scene of the medical situation.

In a further aspect, a medical-support system may be configured to locate where a medical situation is occurring or has occurred, so that one or more selected UAVs can be dispatched to the location. Further, once the location of the medical situation has been determined, the medical-support system may configure the selected UAV or UAVs to autonomously navigate to (or at least near to) the location of the medical situation. In some embodiments, the medical-support system may configure a UAV to travel to a general location near the scene of medical situation, at which point the medical-support system may provide for remote control of the UAV by an operator, so the operator can manually navigate the UAV to the specific location of the medical situation (e.g., to a specific person in a crowded market).

It should be understood that the above embodiments, and other embodiments described herein, are provided for explanatory purposes, and are not intended to be limiting.

Further, the term “medical situation” as used herein should be understood to include any situation to which government or private entity, such as a police department, a fire department, and/or an emergency medical services (EMS) entity, might dispatch its personnel. Therefore, some medical situations may in fact be non-medical in nature. For example, an emergency situation to which a police car, fire truck, or ambulance might be dispatched may be considered a medical situation for purposes of this disclosure. Medical support may not be required at such emergency situations (e.g., when police are sent to the scene of a non-violent crime). Further, some non-emergency situations to which a police car, fire truck, ambulance, or the like might be dispatched, may also be considered a medical situation for purposes of this disclosure. Thus, while exemplary embodiments may be described as being implemented to help provide medical support at the scene of a medical situation, those skilled in the art will understand that the UAVs, the functionality of such UAVs, and/or other aspects of the embodiments that are explicitly described herein can also apply in non-medical and/or non-emergency applications.

II. Illustrative Unmanned Vehicles

The term “unmanned aerial vehicle,” as used in this disclosure, refers to any autonomous or semi-autonomous vehicle that is capable of performing some functions without a physically-present human pilot. Examples of flight-related functions may include, but are not limited to, sensing its environment or operating in the air without a need for input from an operator, among others.

A UAV may be autonomous or semi-autonomous. For instance, some functions could be controlled by a remote human operator, while other functions are carried out auton-

mously. Further, a UAV may be configured to allow a remote operator to take over functions that can otherwise be controlled autonomously by the UAV. Yet further, a given type of function may be controlled remotely at one level of abstraction and performed autonomously at another level of abstraction. For example, a remote operator could control high level navigation decisions for a UAV, such as by specifying that the UAV should travel from one location to another (e.g., from the city hall in Palo Alto to the city hall in San Francisco), while the UAV’s navigation system autonomously controls more fine-grained navigation decisions, such as the specific route to take between the two locations, specific flight controls to achieve the route and avoid obstacles while navigating the route, and so on. Other examples are also possible.

A UAV can be of various forms. For example, a UAV may take the form of a rotorcraft such as a helicopter or multicopter, a fixed-wing aircraft, a jet aircraft, a ducted fan aircraft, a lighter-than-air dirigible such as a blimp or steerable balloon, a tail-sitter aircraft, a glider aircraft, and/or an ornithopter, among other possibilities. Further, the terms “drone”, “unmanned aerial vehicle system” (“UAVS”), or “unmanned aerial system” (“UAS”) may also be used to refer to a UAV.

FIG. 1 is a simplified illustration of a UAV, according to an example embodiment. In particular, FIG. 1 shows an example of a rotorcraft **100** that is commonly referred to as a multicopter. Multicopter **100** may also be referred to as a quadcopter, as it includes four rotors **110**. It should be understood that example embodiments may involve rotorcraft with more or less rotors than multicopter **100**. For example, a helicopter typically has two rotors. Other examples with three or more rotors are possible as well. Herein, the term “multicopter” refers to any rotorcraft having more than two rotors, and the term “helicopter” refers to rotorcraft having two rotors.

Referring to multicopter **100** in greater detail, the four rotors **110** provide propulsion and maneuverability for the multicopter **100**. More specifically, each rotor **110** includes blades that are attached to a motor **120**. Configured as such the rotors may allow the multicopter **100** to take off and land vertically, to maneuver in any direction, and/or to hover. Furthermore, the pitch of the blades may be adjusted as a group and/or differentially, and may allow a multicopter **110** to perform three-dimensional aerial maneuvers such as an upside-down hover, a continuous tail-down “tic-toc,” loops, loops with pirouettes, stall-turns with pirouette, knife-edge, immelman, slapper, and traveling flips, among others. When the pitch of all blades is adjusted to perform such aerial maneuvering, this may be referred to as adjusting the “collective pitch” of the multicopter **100**. Blade-pitch adjustment may be particularly useful for rotorcraft with substantial inertia in the rotors and/or drive train, but is not limited to such rotorcraft

Additionally or alternatively, multicopter **100** may propel and maneuver itself adjust the rotation rate of the motors, collectively or differentially. This technique may be particularly useful for small electric rotorcraft with low inertia in the motors and/or rotor system, but is not limited to such rotorcraft.

Multicopter **100** also includes a central enclosure **130** with a hinged lid **135**. The central enclosure may contain, e.g., control electronics such as an inertial measurement unit (IMU) and/or an electronic speed controller, batteries, other sensors, and/or a payload, among other possibilities.

The illustrative multicopter **100** also includes landing gear **140** to assist with controlled take-offs and landings. In other embodiments, multicopters and other types of UAVs without landing gear are also possible.

In a further aspect, multicopter **100** includes rotor protectors **150**. Such rotor protectors **150** can serve multiple purposes, such as protecting the rotors **110** from damage if the multicopter **100** strays too close to an object, protecting the multicopter **100** structure from damage, and protecting nearby objects from being damaged by the rotors **110**. It should be understood that in other embodiments, multicopters and other types of UAVs without rotor protectors are also possible. Further, rotor protectors of different shapes, sizes, and function are possible, without departing from the scope of the invention.

A multicopter **100** may control the direction and/or speed of its movement by controlling its pitch, roll, yaw, and/or altitude. To do so, multicopter **100** may increase or decrease the speeds at which the rotors **110** spin. For example, by maintaining a constant speed of three rotors **110** and decreasing the speed of a fourth rotor, the multicopter **100** can roll right, roll left, pitch forward, or pitch backward, depending upon which motor has its speed decreased. Specifically, the multicopter may roll in the direction of the motor with the decreased speed. As another example, increasing or decreasing the speed of all rotors **110** simultaneously can result in the multicopter **100** increasing or decreasing its altitude, respectively. As yet another example, increasing or decreasing the speed of rotors **110** that are turning in the same direction can result in the multicopter **100** performing a yaw-left or yaw-right movement. These are but a few examples of the different types of movement that can be accomplished by independently or collectively adjusting the RPM and/or the direction that rotors **110** are spinning.

FIG. 2 is a simplified illustration of a UAV, according to an example embodiment. In particular, FIG. 2 shows an example of a tail-sitter UAV **200**. In the illustrated example, the tail-sitter UAV **200** has fixed wings **202** to provide lift and allow the UAV to glide horizontally (e.g., along the x-axis, in a position that is approximately perpendicular to the position shown in FIG. 2). However, the fixed wings **202** also allow the tail-sitter UAV **200** take off and land vertically on its own.

For example, at a launch site, tail-sitter UAV **200** may be positioned vertically (as shown) with fins **204** and/or wings **202** resting on the ground and stabilizing the UAV in the vertical position. The tail-sitter UAV **200** may then take off by operating propellers **206** to generate the upward thrust (e.g., a thrust that is generally along the y-axis). Once at a suitable altitude, the tail-sitter UAV **200** may use its flaps **208** to reorient itself in a horizontal position, such that the fuselage **210** is closer to being aligned with the x-axis than the y-axis. Positioned horizontally, the propellers **206** may provide forward thrust so that the tail-sitter UAV **200** can fly in a similar manner as a typical airplane.

Variations on the illustrated tail-sitter UAV **200** are possible. For instance, tail-sitters UAVs with more or less propellers, or that utilize a ducted fan or multiple ducted fans, are also possible. Further, different wing configurations with more wings (e.g., an “x-wing” configuration with four wings), with less wings, or even with no wings, are also possible. More generally, it should be understood that other types of tail-sitter UAVs and variations on the illustrated tail-sitter UAV **200** are also possible.

As noted above, some embodiments may involve other types of UAVs, in addition or in the alternative to multicopters. For instance, FIGS. 3A and 3B are simplified illustrations of other types of UAVs, according to example embodiments.

In particular, FIG. 3A shows an example of a fixed-wing aircraft **300**, which may also be referred to as an airplane, an aeroplane, or simply a plane. A fixed-wing aircraft **300**, as the

name implies, has stationary wings **302** that generate lift based on the wing shape and the vehicle’s forward airspeed. This wing configuration is different from a rotorcraft’s configuration, which produces lift through rotating rotors about a fixed mast, and an ornithopter’s configuration, which produces lift by flapping wings.

FIG. 3A depicts some common structures used in a fixed-wing aircraft **300**. In particular, fixed-wing aircraft **300** includes a fuselage **304**, two horizontal wings **302** with an airfoil-shaped cross section to produce an aerodynamic force, a vertical stabilizer **306** (or fin) to stabilize the plane’s yaw (turn left or right), a horizontal stabilizer **308** (also referred to as an elevator or tailplane) to stabilize pitch (tilt up or down), landing gear **310**, and a propulsion unit **312**, which can include a motor, shaft, and propeller.

FIG. 3B shows an example of an aircraft **350** with a propeller in a pusher configuration. The term “pusher” refers to the fact that the propulsion unit **358** is mounted at the back of the aircraft and “pushes” the vehicle forward, in contrast to the propulsion unit being mounted at the front of the aircraft. Similar to the description provided for FIG. 3A, FIG. 3B depicts common structures used in the pusher plane: a fuselage **352**, two horizontal wings **354**, vertical stabilizers **356**, and a propulsion unit **358**, which can include a motor, shaft, and propeller.

UAVs can be launched in various ways, using various types of launch systems (which may also be referred to as deployment systems). A very simple way to launch a UAV is a hand launch. To perform a hand launch, a user holds a portion of the aircraft, preferably away from the spinning rotors, and throws the aircraft into the air while contemporaneously throttling the propulsion unit to generate lift.

Rather than using a hand launch procedure in which the person launching the vehicle is exposed to risk from the quickly spinning propellers, a stationary or mobile launch station can be utilized. For instance, a launch system can include supports, angled and inclined rails, and a backstop. The aircraft begins the launch system stationary on the angled and inclined rails and launches by sufficiently increasing the speed of the propeller to generate forward airspeed along the incline of the launch system. By the end of the angled and inclined rails, the aircraft can have sufficient airspeed to generate lift. As another example, a launch system may include a rail gun or cannon, either of which may launch a UAV by thrusting the UAV into flight. A launch system of this type may launch a UAV quickly and/or may launch a UAV far towards the UAV’s destination. Other types of launch systems may also be utilized.

In some cases, there may be no separate launch system for a UAV, as a UAV may be configured to launch itself. For example, a “tail sitter” UAV typically has fixed wings to provide lift and allow the UAV to glide, but also is configured to take off and land vertically on its own. Other examples of self-launching UAVs are also possible.

In a further aspect, various other types of unmanned vehicles may be utilized to provide remote medical support. Such vehicles may include, for example, unmanned ground vehicles (UGVs), unmanned space vehicles (USVs), and/or unmanned underwater vehicles (UUVs). A UGV may be a vehicle which is capable of sensing its own environment and navigating surface-based terrain without input from a driver. Examples of UGVs include watercraft, cars, trucks, buggies, motorcycles, treaded vehicles, and retrieval duck decoys, among others. A UUV is a vehicle that is capable of sensing its own environment and navigating underwater on its own, such as a submersible vehicle. Other types of unmanned vehicles are possible as well.

III. Illustrative Medical Support Systems with UAVs

As noted above, UAVs may be deployed to provide remote medical support. FIG. 4 is a simplified block diagram illustrating a medical support system 400, according to an example embodiment.

In an illustrative medical-support system 400, an access system 402 may allow for interaction with, control of, and/or utilization of a network of medical-support UAVs 404. In some embodiments, an access system 402 may be a computing system that allows for human-controlled dispatch of UAVs 404. As such, the control system may include or otherwise provide a user interface (UI) 403 via which a user can access and/or control UAVs 404.

As a specific example, access system 402 could be a computing system at a police station or a fire station. Accordingly, a human operator at the police or fire station may receive an indication that a situation exists from a remote device 406 (e.g., a phone call, text message, etc.). The operator may then determine that medical support is appropriate and utilize access system 402 to dispatch one or more UAVs to provide the appropriate medical support. For example, the operator may use the UI 403 of access system 402 to request that a UAV be dispatched to the location of remote device 406 (or to another location indicated by the user of the remote device 406).

A UI 403 of an access system 402 may provide other functionality in addition to allowing for dispatch of UAVs 404. For example, UI 403 may allow an operator to specify certain details related to the medical situation to which the UAV is being dispatched. Examples of such details may include, but are not limited to: (a) general information related to the person or persons involved in the situation, such as age, height, weight, and so on, (b) medical information related to the person or persons involved in the situation, such as medical history, known allergies, and so on, (c) information related to the medical situation itself, such as symptoms exhibited by a person, details of events surrounding the situation (e.g., a car accident), and so on, and (d) desired specifications for the UAV to be dispatched, such as medical-support capabilities, wireless-communication capabilities, and so on.

Further, an access system 402 may provide for remote operation of a UAV. For instance, an access system 402 may allow an operator to control the flight of a UAV via UI 403. As a specific example, an operator may use an access system to dispatch a UAV 404 to the scene of a medical situation. The UAV 404 may then autonomously navigate to the general area where the medical situation is believed to exist (e.g., a stadium). At this point, the operator may use the access system 402 to take over control of the UAV 404, and navigate the UAV to the particular person in need of medical support (e.g., to the person's seat within the stadium). Other examples are also possible.

In an illustrative embodiment, UAVs 404 may take various forms. For example, each UAV 404 may be a UAV such as those illustrated in FIGS. 1, 2, 3A, and 3B. However, medical support system 400 may also utilize other types of UAVs without departing from the scope of the invention. In some implementations, all UAVs 404 may be of the same or a similar configuration. However, in other implementations, UAVs 404 may include a number of different types of UAVs. For instance, UAVs 404 may include a number of types of UAVs, with each type of UAV being configured for a different type or types of medical support.

A remote device 406 may take various forms. Generally, a remote device 406 may be any device via which a request for medical support can be made and/or via which a situation that may require or benefit from medical support can be reported.

For instance, a remote device 406 may be a mobile phone, tablet computer, laptop computer, personal computer, or any network-connected computing device. Further, in some instances, remote device 406 may not be a computing device. As an example, a standard telephone, which allows for communication via plain old telephone service (POTS), may serve as a remote device 406.

Further, a remote device 406 may be configured to communicate with access system 402 via one or more types of communication network(s) 414. For example, a remote device 406 could communicate with access system 402 (or via a human operator of the access system) by placing a phone call over a POTS network, a cellular network, and/or a data network such as the Internet. Other types of networks may also be utilized.

As noted above, a remote device 406 may be configured to allow a user to request medical support. For example, a person may use their mobile phone, a POTS phone, or a VoIP phone, to place an emergency call (e.g., a 9-1-1 call) and request that medical support be provided at the scene of an accident. Further, note that a request for medical support need not be explicit. For instance, a person may place a 9-1-1 call to report an emergency situation. When the 9-1-1 operator receives such a call, the operator may evaluate the information that is provided and decide that medical support is appropriate. Accordingly, the operator may use an access system 402 to dispatch a UAV 404.

In a further aspect, a remote device 406 may be configured to determine and/or provide an indication of its own location. For example, remote device 406 may include a GPS system so that it can include GPS location information (e.g., GPS coordinates) in a communication to an access system 402 and/or to a dispatch system such as central dispatch system 408. As another example, a remote device 406 may use a technique that involves triangulation (e.g., between base stations in a cellular network) to determine its location. Alternatively, another system such as a cellular network may use a technique that involves triangulation to determine the location of a remote device 406, and then send a location message to the remote device 406 to inform the remote device of its location. Other location-determination techniques are also possible.

In an illustrative arrangement, central dispatch system 408 may be a server or group of servers, which is configured to receive dispatch messages requests and/or dispatch instructions from an access system 402. Such dispatch messages may request or instruct the central dispatch system 408 to coordinate the deployment of UAVs for remote medical support. A central dispatch system 408 may be further configured to route such requests or instructions to local dispatch systems 410. To provide such functionality, central dispatch system 408 may communicate with access system 402 via a data network, such as the Internet or a private network that is established for communications between access systems and automated dispatch systems.

In the illustrated configuration, central dispatch system 408 may be configured to coordinate the dispatch of UAVs 404 from a number of different local dispatch systems 410. As such, central dispatch system 408 may keep track of which UAVs 404 are located at which local dispatch systems 410, which UAVs 404 are currently available for deployment, and/or which medical situation or situations each of the UAVs 404 is configured for. Additionally or alternatively, each local dispatch system 410 may be configured to track which of its associated UAVs 404 are currently available for deployment and/or which medical situation or situations each of its associated UAVs is configured for.

In some embodiments, when central dispatch system **408** receives a request for medical support from an access system **402**, central dispatch system **408** may select a specific UAV **404** to dispatch. The central dispatch system **408** may accordingly instruct the local dispatch system **410** that is associated with the selected UAV to dispatch the selected UAV. The local dispatch system **410** may then operate its associated deployment system **412** to launch the selected UAV.

As a specific example, central dispatch system **408** may receive a request for medical support that indicates a certain type of medical situation and a location where the situation is occurring. Take, for instance, a request for medical support at the home of a person who appears to have suffered from cardiac arrest. In this scenario, the central dispatch system **408** may evaluate the fleet of UAVs **404** to select the closest available UAV to the person's home that is configured to provide medical support when a heart attack has occurred. Alternatively, the central dispatch system **408** may select an available UAV that is within a certain distance from the person's home (which may or may not be the closest), and which is configured to provide medical support when cardiac arrest has occurred.

In other embodiments, a central dispatch system **408** may forward a request for medical support to a local dispatch system **410** that is near the location where the support is requested, and leave the selection of a particular UAV **404** to the local dispatch system **410**. For instance, in a variation on the above example, central dispatch system **408** may forward a request for medical support at the home of a person who appears to have suffered from a heart attack to the local dispatch system **410** that is closest to, or within a certain distance from, the person's home. Upon receipt of the request, the local dispatch system **410** may then determine which of its associated UAVs is configured to provide medical support to a heart-attack victim, and deploy this UAV.

In an example configuration, a local dispatch system **410** may be implemented in a computing system at the same location as the deployment system or systems **412** that it controls. For example, in some embodiments, a local dispatch system **410** could be implemented by a computing system at a building, such as a fire station, where the deployment systems **412** and UAVs **404** that are associated with the particular local dispatch system **410** are also located. In other embodiments, a local dispatch system **410** could be implemented at a location that is remote to its associated deployment systems **412** and UAVs **404**.

Numerous variations on and alternatives to the illustrated configuration of medical support system **400** are possible. For example, in some embodiments, a user of a remote device **406** could request medical support directly from a central dispatch system **408**. To do so, an application may be implemented on a remote device **406** that allows the user to provide information regarding a medical situation, and generate and send a data message to request medical support. Such an application might also allow the user to request a particular type of medical support (e.g., by requesting that a UAV deliver a certain kind of medicine). In such an embodiment, central dispatch system **408** may include automated functionality to handle requests that are generated by such an application, evaluate such requests, and, if appropriate, coordinate with an appropriate local dispatch system **410** to deploy a UAV.

Further, in some implementations, some or all of the functionality that is attributed herein to central dispatch system **408**, local dispatch system(s) **410**, access system **402**, and/or deployment system(s) **412** could be combined in a single system, implemented in a more complex system, and/or redistributed among central dispatch system **408**, local dis-

patch system(s) **410**, access system **402**, and/or deployment system(s) **412** in various ways.

Yet further, while each local dispatch system **410** is shown as having two associated deployment systems, a given local dispatch system **410** may have more or less associated deployment systems. Similarly, while central dispatch system **408** is shown as being in communication with two local dispatch systems **410**, a central dispatch system may be in communication with more or less local dispatch systems **410**.

In a further aspect, a deployment system **412** may take various forms. In general, a deployment system may take the form of or include a system for physically launching a UAV **404**. Further, a deployment system **412** may be configured to launch one particular UAV **404**, or to launch multiple UAVs **404**. A deployment system **412** may further be configured to provide additional functions, including for example, diagnostic-related functions such as verifying system functionality of the UAV, verifying functionality of devices that are housed within a UAV (e.g., such as a defibrillator, a mobile phone, or an HMD), and/or maintaining devices or other items that are housed in the UAV (e.g., by charging a defibrillator, mobile phone, or HMD, or by checking that medicine has not expired).

In some embodiments, the deployment systems **412** and their corresponding UAVs **404** (and possibly associated local dispatch systems **410**) may be strategically distributed throughout an area such as a city. For example, deployment systems **412** may be located on the roofs of certain municipal buildings, such as fire stations, which can thus serve as the dispatch locations for UAVs **404**. Fire stations may function well for UAV dispatch, as fire stations tend to be distributed well with respect to population density, their roofs tend to be flat, and the use of firehouse roofs as leased spaces for UAV dispatch could further the public good. However, deployment systems **412** (and possibly the local dispatch systems **410**) may be distributed in other ways, depending upon the particular implementation.

In a further aspect, a medical-support system **400** may include or have access to a user-account database **414**. The user-account database **414** may include data for a number of user-accounts, which are each associated with one or more person. For a given user-account, the user-account database **414** may include data related to the associated person or persons' medical history and/or may include other data related to the associated person or persons. Note that the medical-support system may only acquire, store, and utilize data related to a person with that person's explicit permission to do so.

Further, in some embodiments, a person may have to register for a user-account with the medical-support system **400** in order to use or be provided with medical support by the UAVs **404** of medical-support system **400**. As such, the user-account database **414** may include authorization information for a given user-account (e.g., a user-name and password), and/or other information that may be used to authorize access to a user-account.

In some embodiments, a person may associate one or more of their devices with their user-account, such that they can be provided with access to the services of medical-support system **400**. For example, when a person uses an associated mobile phone to, e.g., place a call to an operator of access system **402** or send a message requesting medical support to a dispatch system, the phone may be identified via a unique device identification number, and the call or message may then be attributed to the associated user-account. In addition or in the alternative to being an authorization mechanism,

identifying the user-account may allow information such as the person's medical history to be used in responding to their request for medical support.

In a further aspect, the user-account database **414** may include data indicating a service level for each user. More specifically, a medical-support system **400** may provide service according to a number of different service levels, which correspond to different types of medical support. For example, a higher service level may: (a) provide access to additional types of UAVs, (b) provide medical support for additional medical situations, (c) provide access to improved support for a given medical situation, and/or (d) have priority as far as response time to requests for medical support, as compared to a lower service level. Other differences between a higher and lower service level are also possible.

In some embodiments, there may be no individual user accounts associated with a medical system; or, user accounts may exist but may not be used for purposes of determining whether a person should be provided medical support and/or for purposes of determining the quality of medical support that should be provided. For example, a medical support system may be implemented by a municipality or another public entity to provide medical support to citizens for free or at an equal cost. Other examples are also possible.

IV. Illustrative Components of a Medical-Support UAV

FIG. 5 is a simplified block diagram illustrating components of a UAV **500**, according to an example embodiment. UAV **500** may take the form of or be similar in form to one of the UAVs **100**, **200**, **300**, and **350** shown in FIGS. 1, 2, 3A, and 3B. However, a UAV **500** may also take other forms.

UAV **500** may include various types of sensors, and may include a computing system configured to provide the functionality described herein. In the illustrated embodiment, the sensors of UAV **500** include an inertial measurement unit (IMU) **502**, ultrasonic sensor(s) **504**, GPS **506**, imaging system(s) **508**, among other possible sensors and sensing systems.

In the illustrated embodiment, UAV **500** also includes one or more processors **510**. A processor **510** may be a general-purpose processor or a special purpose processor (e.g., digital signal processors, application specific integrated circuits, etc.). The one or more processors **510** can be configured to execute computer-readable program instructions **514** that are stored in the data storage **512** and are executable to provide the functionality of a UAV described herein.

The data storage **512** may include or take the form of one or more computer-readable storage media that can be read or accessed by at least one processor **510**. The one or more computer-readable storage media can include volatile and/or non-volatile storage components, such as optical, magnetic, organic or other memory or disc storage, which can be integrated in whole or in part with at least one of the one or more processors **510**. In some embodiments, the data storage **512** can be implemented using a single physical device (e.g., one optical, magnetic, organic or other memory or disc storage unit), while in other embodiments, the data storage **512** can be implemented using two or more physical devices.

As noted, the data storage **512** can include computer-readable program instructions **514** and perhaps additional data, such as diagnostic data of the UAV **500**. As such, the data storage **514** may include program instructions to perform or facilitate some or all of the UAV functionality described herein. For instance, in the illustrated embodiment, program

instructions **514** include a navigation module **515** and one or more medical-support modules **516**.

A. Sensors

In an illustrative embodiment, IMU **502** may include both an accelerometer and a gyroscope, which may be used together to determine the orientation of the UAV **500**. In particular, the accelerometer can measure the orientation of the vehicle with respect to earth, while the gyroscope measures the rate of rotation around an axis. IMUs are commercially available in low-cost, low-power packages. For instance, an IMU **502** may take the form of or include a miniaturized MicroElectroMechanical System (MEMS) or a NanoElectroMechanical System (NEMS). Other types of IMUs may also be utilized.

An IMU **502** may include other sensors, in addition to accelerometers and gyroscopes, which may help to better determine position and/or help to increase autonomy of the UAV **500**. Two examples of such sensors are magnetometers and pressure sensors. Other examples are also possible. (Note that a UAV could also include such additional sensors as separate components from an IMU.)

While an accelerometer and gyroscope may be effective at determining the orientation of the UAV **500**, slight errors in measurement may compound over time and result in a more significant error. However, an example UAV **500** may be able to mitigate or reduce such errors by using a magnetometer to measure direction. One example of a magnetometer is a low-power, digital 3-axis magnetometer, which can be used to realize an orientation independent electronic compass for accurate heading information. However, other types of magnetometers may be utilized as well.

UAV **500** may also include a pressure sensor or barometer, which can be used to determine the altitude of the UAV **500**. Alternatively, other sensors, such as sonic altimeters or radar altimeters, can be used to provide an indication of altitude, which may help to improve the accuracy of and/or prevent drift of an IMU.

In a further aspect, UAV **500** may include one or more sensors that allow the UAV to sense objects in the environment. For instance, in the illustrated embodiment, UAV **500** includes ultrasonic sensor(s) **504**. Ultrasonic sensor(s) **504** can determine the distance to an object by generating sound waves and determining the time interval between transmission of the wave and receiving the corresponding echo off an object. A typical application of an ultrasonic sensor for unmanned vehicles or IMUs is low-level altitude control and obstacle avoidance. An ultrasonic sensor can also be used for vehicles that need to hover at a certain height or need to be capable of detecting obstacles. Other systems can be used to determine, sense the presence of, and/or determine the distance to nearby objects, such as a light detection and ranging (LIDAR) system, laser detection and ranging (LADAR) system, and/or an infrared or forward-looking infrared (FLIR) system, among other possibilities.

UAV **500** also includes a GPS receiver **506**. The GPS receiver **506** may be configured to provide data that is typical of well-known GPS systems, such as the GPS coordinates of the UAV **500**. Such GPS data may be utilized by the UAV **500** for various functions. For example, when a caller uses a mobile device to request medical support from a UAV, the mobile device may provide its GPS coordinates. As such, the UAV may use its GPS receiver **506** to help navigate to the caller's location, as indicated, at least in part, by the GPS coordinates provided by their mobile device. Other examples are also possible.

UAV **500** may also include one or more imaging system(s) **508**. For example, one or more still and/or video cameras may

be utilized by a UAV 500 to capture image data from the UAV's environment. As a specific example, charge-coupled device (CCD) cameras or complementary metal-oxide-semiconductor (CMOS) cameras can be used with unmanned vehicles. Such imaging sensor(s) 508 have numerous possible applications, such as obstacle avoidance, localization techniques, ground tracking for more accurate navigation (e.g., by applying optical flow techniques to images), video feedback, and/or image recognition and processing, among other possibilities.

In a further aspect, UAV 500 may use its one or more imaging system 508 to help in determining location. For example, UAV 500 may capture imagery of its environment and compare it to what it expects to see in its environment given current estimated position (e.g., its current GPS coordinates), and refine its estimate of its position based on this comparison.

In a further aspect, UAV 500 may include one or more microphones. Such microphones may be configured to capture sound from the UAV's environment.

B. Navigation and Location Determination

The navigation module 515 may provide functionality that allows the UAV 500 to, e.g., move about in its environment and reach a desired location. To do so, the navigation module 515 may control the altitude and/or direction of flight by controlling the mechanical features of the UAV that affect flight (e.g., rotors 110 of UAV 100).

In order to navigate the UAV 500 to a target location, a navigation module 515 may implement various navigation techniques, such as map-based navigation and localization-based navigation, for instance. With map-based navigation, the UAV 500 may be provided with a map of its environment, which may then be used to navigate to a particular location on the map. With localization-based navigation, the UAV 500 may be capable of navigating in an unknown environment using localization. Localization-based navigation may involve a UAV 500 building its own map of its environment and calculating its position within the map and/or the position of objects in the environment. For example, as a UAV 500 moves throughout its environment, the UAV 500 may continuously use localization to update its map of the environment. This continuous mapping process may be referred to as simultaneous localization and mapping (SLAM). Other navigation techniques may also be utilized.

In some embodiments, the navigation module 515 may navigate using a technique that relies on waypoints. In particular, waypoints are sets of coordinates that identify points in physical space. For instance, an air-navigation waypoint may be defined by a certain latitude, longitude, and altitude. Accordingly, navigation module 515 may cause UAV 500 to move from waypoint to waypoint, in order to ultimately travel to a final destination (e.g., a final waypoint in a sequence of waypoints).

In a further aspect, navigation module 515 and/or other components and systems of UAV 500 may be configured for "localization" to more precisely navigate to the scene of a medical situation. More specifically, it may be desirable in certain situations for a UAV to be close to the person in need of medical support (e.g., within reach of the person), so as to properly provide medical support to the person. To this end, a UAV may use a two-tiered approach in which it uses a more-general location-determination technique to navigate to a target location or area that is associated with the medical situation, and then use a more-refined location-determination technique to identify and/or navigate to the target location within the general area.

For example, a UAV 500 may navigate to the general area of a person in need using waypoints that are pre-determined based on GPS coordinates provided by a remote device at the scene of the medical situation. The UAV may then switch to mode in which it utilizes a localization process to locate and travel to a specific location of the person in need. For example, if a person is having a heart attack at a large stadium, a UAV 500 carrying a medical package may need to be within reach of the person or someone near the person so that the can take items from the package. However, a GPS signal may only get a UAV so far, e.g., to the stadium. A more precise location-determination technique may then be used to find the specific location of the person within the stadium.

Various types of location-determination techniques may be used to accomplish localization of a person once a UAV 500 has navigated to the general area of the person. For instance, a UAV 500 may be equipped with one or more sensory systems, such as, for example, imaging system(s) 508, a directional microphone array (not shown), ultrasonic sensors 504, infrared sensors (not shown), and/or other sensors, which may provide input that the navigation module 515 utilizes to navigate autonomously or semi-autonomously to the specific location of a person.

As another example, once the UAV 500 reaches the general area of the person, the UAV 500 may switch to a "fly-by-wire" mode where it is controlled, at least in part, by a remote operator, who can navigate the UAV 500 to the specific location of the person in need. To this end, sensory data from the UAV 500 may be sent to the remote operator to assist them in navigating the UAV to the specific location. For example, the UAV 500 may stream a video feed or a sequence of still images from the UAV's imaging system(s) 508. Other examples are possible.

As yet another example, the UAV 500 may include a module that is able to signal to a passer-by for assistance in either reaching the specific location or delivering its medical-support items to the medical situation; for example, by displaying a visual message in a graphic display, playing an audio message or tone through speakers, flashing a light, or performing a combination of such functions. Such visual or audio message might indicate that assistance is needed in delivering the UAV 500 to the person in need, and might provide information to assist the passer-by in delivering the UAV 500 to the person, such a description of the person, the person's name, and/or a description of the person's specific location, among other possibilities. This implementation can be useful in a scenario in which the UAV is unable to use sensory functions or another location-determination technique to determine the specific location of the person.

As an additional example, once a UAV 500 arrives at the general area of a person, the UAV may utilize a beacon from the remote device (e.g., the mobile phone of a person who called for medical support) to locate the person. Such a beacon may take various forms. As an example, consider the scenario where a remote device, such as the mobile phone of a person in need or a bystander, is able to send out directional signals (e.g., an RF signal, a light signal and/or an audio signal). In this scenario, the UAV may be configured to navigate by "sourcing" such directional signals—in other words, by determining where the signal is strongest and navigating accordingly. As another example, a mobile device can emit a frequency, either in the human range or outside the human range, and the UAV can listen for that frequency and navigate accordingly. As a related example, if the UAV is listening for spoken commands, then the UAV could utilize spoken statements, such as "Help! I'm over here!" to source the specific location of the person in need of medical assistance.

15

In an alternative arrangement, a navigation module may be implemented at a remote computing device, which communicates wirelessly with the UAV. The remote computing device may receive data indicating the operational state of the UAV, sensor data from the UAV that allows it to assess the environmental conditions being experienced by the UAV, and/or location information for the UAV. Provided with such information, the remote computing device may determine altitudinal and/or directional adjustments that should be made by the UAV and/or may determine how the UAV should adjust its mechanical features (e.g., rotors **110** of UAV **100**) in order to effectuate such movements. The remote computing system may then communicate such adjustments to the UAV so it can move in the determined manner.

C. Communication Systems

In a further aspect, UAV **500** includes one or more communication systems **520**. The communications systems **520** may include one or more wireless interfaces and/or one or more wireline interfaces, which allow UAV **500** to communicate via one or more networks. Such wireless interfaces may provide for communication under one or more wireless communication protocols, such as Bluetooth, WiFi (e.g., an IEEE 802.11 protocol), Long-Term Evolution (LTE), WiMAX (e.g., an IEEE 802.16 standard), a radio-frequency ID (RFID) protocol, near-field communication (NFC), and/or other wireless communication protocols. Such wireline interfaces may include an Ethernet interface, a Universal Serial Bus (USB) interface, or similar interface to communicate via a wire, a twisted pair of wires, a coaxial cable, an optical link, a fiber-optic link, or other physical connection to a wireline network.

In an example embodiment, a UAV **500** may include communication systems **520** that allow for both short-range communication and long-range communication. For example, the UAV **500** may be configured for short-range communications using Bluetooth and for long-range communications under a CDMA protocol. In such an embodiment, the UAV **500** may be configured to function as a “hot spot;” or in other words, as a gateway or proxy between a remote support device and one or more data networks, such as cellular network and/or the Internet. Configured as such, the UAV **500** may facilitate data communications that the remote support device would otherwise be unable to perform by itself

For example, UAV **500** may provide a WiFi connection to a remote device, and serve as a proxy or gateway to a cellular service provider’s data network, which the UAV might connect to under an LTE or a 3G protocol, for instance. The UAV **500** could also serve as a proxy or gateway to a high-altitude balloon network, a satellite network, or a combination of these networks, among others, which a remote device might not be able to otherwise access.

D. Power Systems

In a further aspect, UAV **500** may include power system(s) **521**. A power system **521** may include one or more batteries for providing power to the UAV **500**. In one example, the one or more batteries may be rechargeable and each battery may be recharged via a wired connection between the battery and a power supply and/or via a wireless charging system, such as an inductive charging system that applies an external time-varying magnetic field to an internal battery.

E. Medical-Support Functionality

As noted above, UAV **500** may include one or more medical-support modules **516**. The one or more medical-support modules **516** include software, firmware, and/or hardware that may help to provide or assist in the provision of the medical-support functionality described herein.

16

Configured as such, a UAV **500** may provide medical support in various ways. For instance, a UAV **500** may have stored information that can be provided to a person or persons at the target location, in order to assist the person or persons in providing medical care. For example, a UAV may include a video or audio file with instructions for providing medical support, which the UAV can play out to a person at the target location. As another example, a UAV may include an interactive program to assist a person at the target location in providing medical support. For instance, a UAV may include an application that analyzes the person’s speech to detect questions related to the medical situation and/or that provides a text-based interface via which the person can ask such questions, and then determines and provides answers to such questions.

In some embodiments, a UAV **500** may facilitate communication between a layperson and/or medical personnel at the scene and medical personnel at a remote location. As an example, a medical support module **516** may provide a user interface via which a person at the scene can use a communication system **520** of the UAV to communicate with an emergency medical technician at a remote location. As another example, the UAV **500** can unlock certain capabilities of a remote device, such as a mobile phone, which is near the UAV at the scene of a medical situation. Such capabilities may be inaccessible to a user of the remote device, unless the remote device is within a certain distance from the UAV such that the UAV can unlock the capabilities. For example, a UAV may send the remote device a security key that allows the remote device to establish a secure connection to communicate with medical personnel at a remote location. Other examples are also possible.

Further, in order to provide medical support at a remote location, a UAV **500** may be configured to transport items to the scene of a medical situation. Such items may aid in diagnosing and/or treating a person who needs medical assistance, or may serve other purposes. Such items may include, as examples: (a) medicines, (b) diagnostic devices, such as a pulse oximeter, blood pressure sensor, or EKG sensor, (c) treatment devices, such as an EpiPen, a first aid kit, or various kinds of defibrillators (e.g., an automated external defibrillator (AED)), and/or (d) remote support devices, such as a mobile phone or a head-mountable device (HMD), among other possibilities. Note that some items that are electronic may include one or more batteries to provide power to the item. These batteries may be rechargeable and may be recharged using one or more wired or wireless charging systems. In addition or on in the alternative, an item may be integrated with one or more batteries in the power system **521** for power.

A UAV **500** may employ various systems and configurations in order to transport items to the scene of a medical situation. For example, as shown in FIG. 1, a UAV **100** can include a compartment **135**, in which an item or items may be transported. As another example, the UAV can include a pick-and-place mechanism, which can pick up and hold the item while the UAV is in flight, and then release the item during or after the UAV’s descent. As yet another example, a UAV could include an air-bag drop system, a parachute drop system, and/or a winch system that is operable from high above a medical situation to drop or lower an item or items to the scene of the medical situation. Other examples are also possible.

In some implementations, a given UAV **500** may include a “package” designed for a particular medical situation (or possibly for a particular set of medical situations). A package may include one or more items for medical support in the

particular medical situation, and/or one or more medical-support modules **516** that are designed to provide medical support in the particular medical situation. In some cases, a UAV **500** may include a package that is designed for a particular medical situation such as choking, cardiac arrest, shock, asthma, drowning, etc.

In other cases, a UAV **500** may include a package that is designed for a number of different medical situations, which may be associated in some way. For example, a dive-accident package may be designed to provide or assist in provision of care in various medical situations that are often associated with a scuba diving accident, such as drowning and/or decompression sickness. Such a dive-accident package might include a flotation device, an oxygen-therapy system, a system for delivering visual and/or audible medical care instructions (e.g., instructions for performing CPR), and/or a signaling device, among other possibilities. A UAV **500** that is configured with such a dive-accident package may be referred to herein as a “dive-rescue” UAV. Such a dive-rescue UAV may be deployed to a diver on the surface of the water, who has just had an accident while scuba diving, with the hope that the UAV can reach the diver and deliver medical treatment sooner than would otherwise be possible.

For instance, provided with the above dive-accident package, the UAV **500** may drop a flotation device to help the diver stay afloat until the diver can be reached by rescuers. In addition, the UAV may include a signaling device, which can be automatically turned on when the UAV locates the diver. Doing so may help a rescue boat locate a diver more quickly. Further, once the diver has been rescued, the UAV may display visual instructions and/or play back auditory instructions for CPR, which may help to revive a drowning victim. Such instructions may be particularly useful in the case where the diver is rescued by non-medical professionals; if the diver is rescued by a passing fishing boat, for example.

Further, when the UAV arrives at the scene of a dive accident or, more likely, once the diver has been moved to a rescue boat, the UAV could provide an oxygen-therapy system, and possibly instructions for use thereof, in order to treat possible decompression sickness. Since a rescue boat might not have oxygen-therapy system, and immediate administration of pure oxygen has been shown to increase the probability of recovering from decompression sickness, such functionality of a UAV could improve treatment for a diver suffering from decompression sickness.

In some embodiments, a UAV **500** could include an integrated system or device for administering or assisting in the administration of medical care (e.g., a system or device having one or more components that are built in to the structure of the UAV itself). For example, as noted above, a UAV could include an oxygen-therapy system. In an example configuration, an oxygen-therapy system might include a mask that is connected via tubing to an on-board oxygen source. Configured as such, the UAV could release the oxygen mask when it reaches a person in need of oxygen (e.g., at a fire scene).

As another example of a UAV with an integrated medical-support device, a UAV **500** might function as a mobile defibrillator. Specifically, rather than carry a stand-alone defibrillator that can then be removed from the UAV for use, the UAV itself may function as a defibrillator.

As a specific example, a multicopter might include components of an AED that is built into its body, as well as retractable electrode pads for administering a shock to a person who is experiencing a cardiac event or arrest. When the multicopter arrives at the scene of cardiac arrest, the multicopter may land, disable its rotors, and enter a mode where it functions as an AED. Specifically, after landing, the multi-

copter may release its retractable electrode pads and provide instructions so that a bystander, who might be layperson, could use the electrode pads to administer care to the person with a cardiac arrest. Such instructions may be provided, for example, by displaying text and/or video on a graphic display that is built in to the body of the multicopter, and/or by playing back audio instructions. The multicopter could also include a wireless communication interface via which a bystander could communicate with a live remote operator (e.g., a medical professional at a remote location), in order to receive instructions for using the AED.

Many other examples and variations on the above examples of UAVs with integrated medical-support systems and devices are also possible. For instance, a medical device may be integrated into the structure of a UAV itself when doing so reduces weight, improves aerodynamics, and/or simplifies the use of the device by a person at the scene of the medical situation. Further, those skilled in the art will appreciate that a medical-support system or device may be integrated in the structure of a UAV in other situations and for other reasons.

In some applications, a UAV **500** may be dispatched to the scene of a medical situation to provide early intelligence to medical personnel. In particular, a UAV **500** may be dispatched because it is expected to reach the location of a medical situation more rapidly than medical personnel are able to. In this scenario, the UAV **500** may arrive at the scene and provide early intelligence by communicating information and providing situational awareness to medical personnel. For example, a UAV **500** may use its imaging system(s) **508** to capture video and/or still images at the scene of the medical situation, which the UAV **500** may communicate to medical and/or emergency personnel. As another example, UAV **500** could administer preliminary tests to a person in need, or request that a bystander administer certain preliminary diagnostic tests and/or provide certain information. UAV **500** may then send such test results and/or such information provided by a bystander to medical and/or emergency personnel. A UAV **500** may provide other types of early-intelligence information as well.

By providing early intelligence to medical and/or emergency personnel, a UAV **500** may help the medical and/or emergency personnel to prepare to provide care, such that more effective care can be provided once the personnel arrive at the scene. For instance, a UAV **500** could send video, test results, and/or bystander-provided information to medical personnel while they are travelling in an ambulance on their way to the scene, to firemen or other personnel while they are in a fire truck on their way to the scene, and/or to police they are in a law-enforcement vehicle on their way to the scene, among other possibilities.

It should be understood that the examples of medical-support functionality that are provided herein are not intended to be limited. A UAV may be configured to provide other types of medical-support functionality without departing from the scope of the invention.

V. Illustrative Methods

FIG. **6** is a flow chart illustrating a method **600**, according to an example embodiment. Illustrative methods, such as method **600**, may be carried out in whole or in part by a component or components in a medical-support system, such as by the one or more of the components of the medical-support system **400** shown in FIG. **4**. For simplicity, method **600** may be described generally as being carried out by a medical-support system, such as by one or more of an access

system **402**, a central dispatch system **408**, a local dispatch system **410**, and/or a deployment system **412**. However, it should be understood that example methods, such as method **600**, may be carried out by other entities or combinations of entities (i.e., by other computing devices and/or combinations of computing devices), without departing from the scope of the invention.

As shown by block **602**, method **600** involves a medical-support system identifying a remote medical situation. The medical-support system may also determine the target location corresponding to the medical situation, as shown by block **604**. The medical-support system can then select a UAV from a plurality of UAVs, where the selection of the UAV is based at least in part on a determination that the selected UAV is configured for the identified medical situation, as shown by **606**. More specifically, in an illustrative embodiment, the medical-support system may have a number of UAVs available for dispatch, which are configured for a number of different medical situations (with some or all of the UAVs being configured differently from one another). Accordingly, at block **606**, the medical-support system may select the particular UAV that is appropriate for the identified medical situation. The medical-support system may then cause the selected UAV to travel to the target location to provide medical support, as shown by block **608**.

A. Identifying a Remote Medical Situation

Various types of medical situations may be identified at block **602** of method **600**. For example, a medical-support system could identify a medical situation such as the occurrence of a heart attack, a stroke, an anaphylactic shock, a broken bone, heat stroke, or any of a large number of other medical situations. More generally, a medical situation may be any situation where a person or possibly even an animal (e.g., a pet dog or cat) might benefit from medical support or treatment.

In some embodiments, however, a medical-support system may place more stringent requirements on what is classified as a medical situation to which a UAV should be dispatched. In particular, since deploying and operating an UAV may be costly, a medical-support system may only dispatch a UAV in a situation where the UAV is expected to provide more immediate and/or superior medical support, as compared to traditional emergency response services. In some embodiments, the medical-support system may even engage in cost-benefit analysis to determine whether the expected benefit of sending a UAV outweighs the expense of doing so. Other criteria for determining what is and is not considered a medical situation that justifies use of a UAV are also possible, and may vary depending upon the particular implementation.

In other embodiments, the benefit of having a UAV there slightly earlier may be great enough that the UAV may be deployed as soon as a possible medical situation is reported; without waiting to determine whether the use of a UAV is justified. Then, at a later time (e.g., 30-60 seconds after launch), the medical-support system may have a better understanding as to whether or not the possible medical situation is in fact a medical situation to which a UAV should be deployed. If it is not, then the UAV may be recalled; or the UAV may automatically return if it does not receive a message indicating that it should continue to the location of the medical situation.

At block **602**, the identification of the remote medical situation may involve a component of the medical-support system receiving a communication that originated from a remote device, and identifying the remote medical situation based on information provided by the communication. Such a communication may take various forms, such as a phone call,

a text-message, or an electronic message generated by an application of a remote device, as just a few examples. In some embodiments, an automated computer program on a remote device may act as a notifier and initiate a communication to report a medical situation. For example, a body-monitoring device may detect a possible medical situation, such as a stroke or heart attack, and automatically notify a medical support system. Other examples are also possible.

In some embodiments, the communication may include location information, such as GPS coordinates of the remote device. Such location information may be utilized at block **604** to determine the location of the remote device, which may in turn be assumed to be or otherwise used to determine the location of medical situation.

Further, in order to identify what the particular medical situation is, the medical-support system may utilize information provided via the communication from the remote device. Specifically, such information may be used in an effort to better identify the type of medical situations that is at issue, or to identify a class of medical situations for which the person's medical situation likely qualifies. In some embodiments, this information may be provided by the person operating the remote device, who may be referred to herein as the "notifier." For instance, a notifier might provide information such as the observed symptoms of the person in need (e.g., "my friend just collapsed and is convulsing" or "I am having chest pains"). In some instances, the notifier might purport to convey the type of medical emergency itself ("my brother is having a stroke!"). Further, a notifier might provide location information and/or other types of information related to a medical situation.

The information provided via the communication from the remote device may take various forms. For example, the notifier may provide information via a voice call, in which case they can simply speak with a live operator (e.g., a live operator at access system **402**). Alternatively, a speech-to-text module could be implemented by the medical-support system to convert the speech from a phone call to text, which can then be analyzed to derive the information about the medical situation. Information related to a medical situation may also be provided via text, such as via a text message or a message that is generated via an application on the remote device.

In some embodiments, the medical-support system may obtain information from image data that is captured at the scene of a medical situation, which may then be used to determine what the particular medical situation is. Such image data may be captured by and/or sent from a remote device at the scene of the medical situation. In particular, a notifier may use the camera of their mobile phone to capture and send video and/or still images to the medical-support system, possibly in real-time. As examples, a bystander may capture an image or video of an injured limb, or possibly even video of an accident taking place, and such image data to the medical-support system. Other examples are possible.

In some embodiments, the information provided by the notifier may include other types of data. For example, a remote device may include an application for reporting a medical situation and/or requesting medical support. Such an application may provide a UI with features that allow a user of the remote device to quickly provide information relating to a medical situation. For instance, a user could hit a button to indicate what type of medical situation they believe to be occurring, select checkboxes from a symptoms checklist to indicate observed symptoms, and so on. Further, such an application may allow the user to initiate a communication to relay data indicating the provided information to a medical-support system. Other examples are also possible.

In some embodiments, the information provided by the notifier can be used in combination with other information that is known or accessible to the medical-support system. As an example, consider a scenario where a notifier, who is at the beach on a 100-degree day, calls the medical-support system from their mobile phone and says, “someone here just collapsed!” The medical-support system may then determine the location of the mobile phone, use enhanced mapping data to determine that the mobile phone’s location is at a beach, and look up the current temperature at the determined location. Then, using the notifier’s spoken information, together with the local temperature and the fact that location information corresponds to a beach, the medical-support system may deduce that the medical situation is likely to be heat exhaustion or a related condition.

In the embodiments described above, block 602 involves the medical-support system using various types of information to actively determining what the particular medical situation is likely to be. As another example, and referring to FIG. 4, when a remote device 406 contacts an operator at an access system 402 to report a medical situation, the access system may automatically extract and analyze information from the communication to identify what the medical situation is, or determine a list of possible medical situations based on the available information. The access system 402 may then display an indication of the identified medical situation or the list of possible medical situations, so that the operator can confirm or select the medical situation they believe is occurring and, if appropriate, instruct the dispatch system (e.g., central dispatch system 408) to send a UAV. Alternatively, when the access system positively identifies a particular medical situation, the access system may automatically instruct the dispatch system to dispatch a UAV, without requesting authorization from an operator.

Note that in some cases, the identification of the remote medical situation could simply involve the medical-support system receiving a communication that indicates what the medical situation is. In other words, the medical-support system may identify the medical situation by passively being told what it is by a remote device or by a human operator of the medical-support system (e.g., a live operator at access system 402), for example.

B. Determining the Target Location

As noted above, block 604 of method 600 involves a medical-support system determining a target location that corresponds to the identified medical situation. For example, when an emergency-response service is notified of a medical situation, the service will likely need to determine the general location of the person in need, so that a UAV can be deployed to assist the person.

In some embodiments, the target location may be the location of the person or persons who are likely to benefit from medical support in the given medical situation (or an estimate of such person or persons’ location or locations). For example, if a person who is need of medical care places an emergency call from their own mobile phone, the target location may be determined to be or otherwise based on the location of their mobile phone. As another example, if a bystander places an emergency call from their mobile phone in order to report a medical situation that involves another person, it may be assumed or otherwise determined that the bystander is at or near the location of the other person. Accordingly, the target location may be set to (or otherwise determined from) the location of the bystander’s mobile phone.

In other embodiments, the target location may be different from the location of the person or persons who are likely to

benefit from medical support. For example, consider a scenario where an emergency medical technician (EMT) or paramedic is closer to the location of a person in need of medical support, but the EMT or paramedic does not have certain medical supplies that are needed for or might improve the medical care that can be provided. In this scenario, a medical-support system may dispatch a UAV to the location of the EMT or paramedic in order to deliver medical supplies to the EMT or paramedic, so that they can take them with them to the scene of the medical situation. Further, in some cases, the UAV might even be configured to deliver the medical supplies to the EMT or paramedic as they travel to the scene of the medical situation. In such case, the target location (e.g., the location of the EMT or paramedic) may be dynamically updated to reflect the movement of the EMT or paramedic as they travel to the scene.

The target location may be determined in a number of ways, and may be based on various types of location information. For instance, in some embodiments, the target location may be determined based on information that is provided by the remote device from which the indication of the medical situation was received. For example, consider a scenario where a bystander calls “911” and says “Somebody near me just collapsed!” Typically, when receiving a phone call, the police also receive location information, such as GPS coordinates, which identify the location of the remote device. This location information may then be made available to a medical-support system or otherwise accessible for purposes of determining the target location. For example, when a remote device calls to report a medical situation, an operator at an access system or an automated dispatch system could determine the location of the remote device based on such received GPS coordinates.

A medical-support system may determine and/or be provided with information that the can be used to determine the target location in other ways. For instance, in some embodiments, part or all of the process of determining the target location could be automated or, in other words, performed without a need for human intervention. To this end, the medical-support system could utilize any suitable information-recognition technique, such as, for example, voice recognition (when the notification is spoken) or character recognition (when the notification is typed), among other techniques now known or later developed. As an example, consider a scenario where a bystander calls “911” and says: “Somebody near me just collapsed! I’m at 123 Main Street, Mountain View.” In this situation, an automated dispatch system could apply speech-to-text processing to analyze the bystander’s words and determine the stated address therefrom.

The above techniques for determining such target locations are provided for illustrative purposes and not intended to be limiting. It should be understood that other techniques may be used to determine a target location, to which a UAV may be dispatched by a medical-support system.

C. Selecting an Unmanned Aerial Vehicle

As noted above, at block 606 of method 600, a medical-support system may select a UAV that is configured to provide medical support for the particular medical situation. In particular, a medical-support system may include or have access to a number of different types of UAVs, which are configured to provide medical support in various different medical scenarios. As such, different UAVs may be said to have a different “medical-support configurations.” Thus, block 606 may involve a medical-support system selecting a UAV that has a medical-support configuration that is likely to provide or assist in providing medical support for the particular medical situation.

In some cases, the medical-support configuration of a given type of UAV may include a package of one or more items that are designed to provide or assist in providing medical support for a certain medical situation. For example, a given type of UAV could include Aspirin and a defibrillator, and thus might be selected as an appropriate UAV to deploy when the medical-support system receives an indication that a heart attack or cardiac arrest is occurring or has just occurred. Many other examples are also possible.

Additionally or alternatively, the medical-support configuration of a given type of UAV may include one or more operational functions that are designed to provide or assist in medical support for the remote medical situation. For instance, a UAV may include wireless communication capabilities that allow remote medical personnel to assist those at the scene. For instance, a UAV might include in its package, a mobile phone or HMD, via which a bystander can communicate with and receive instructions from remote medical personnel, such that the bystander can be informed how to, e.g., provide care to a person who is injured or is suffering from a medical condition. As another example, a UAV may include program logic (e.g., medical support module(s) 416) that allow the UAV to perform certain diagnostic tests, in which the UAV analyzes data acquired from certain sensory systems of the UAV. Other examples are also possible.

In some embodiments, the selection of a UAV may be based, at least in part, on the particular person to whom medical support is going to be provided. For example, the medical-support system may determine that a particular user-account is associated with the medical situation. The medical-support system may then determine a service level for the particular user-account, and use the service level as a basis to select the UAV.

For example, there may be several UAVs that could be deployed to provide medical support in a particular medical situation. However, for various reasons, a particular one of the UAVs may only be deployed to someone who was paid for or otherwise is entitled to a higher service level. Accordingly, the particular UAV may only be selected if a person involved in the medical situation is authorized for the higher service level. Note that in some cases, the service level attributed to a particular communication may be that to which the person to whom the medical support is being provided by a UAV (e.g., the victim of an accident) is entitled. However, in other cases, the service level may be that of someone other than a person in need of medical care. For example, a family member, friend, or even a bystander to a medical situation, may have a particular service level that allows them to request medical support corresponding to the particular service level, on the behalf of another person in need.

The particular user-account may be determined in various ways. For example, a person may link their computing devices, such as their mobile phones, to a user-account for medical support. Accordingly, the medical-support system may determine an identification number for the remote device that provides the indication of the medical situation, and use the identification number to look up the associated medical-support user-account. Alternatively, the person who requests medical support may provide identification and/or log-in information, so that a medical-support user-account may be identified and/or verified by the medical-support system. Other techniques for determining the particular user-account are also possible.

In a further aspect, medical history and/or other information related to the particular person in need of medical support may be utilized to select an appropriate UAV. For example, delivery of prescription medications by non-physicians may

be strictly regulated, even in emergency situations. To facilitate the verification and delivery of such medications, a medical-support system may include an opt-in registry, which includes persons' names and a list of medications for which each person has a current prescription. To facilitate diagnosis, the opt-in registry may further include a list of an individual's known medical conditions that may lead to emergency care. In practice, a given user-account may indicate such prescription-authorization information, known medical conditions, and/or other medical information for the person. Accordingly, an medical-support system may access the user-account for a person in need of medical support to determine whether or not they have a prescription for a particular medication, such that a UAV including the particular medication can be dispatched.

D. Dispatching the Selected UAV

As noted above, block 608 of method 600 involves a medical-support system causing the selected UAV to travel to the target location to provide medical support, as shown by block 608. This function may be accomplished in various ways, depending upon the particular implementation.

In some embodiments, block 608 may simply involve a component of the medical-support system sending a message to another entity to indicate that the selected UAV should be deployed. For example, if method 600 is carried out by an access system 402, the access system may identify the medical situation, select an appropriate type of UAV, and send a message to the central dispatch system 408, which indicates that a UAV of the selected type should be dispatched to the target location. As another example, if method 600 is carried out by a central dispatch system 408, the central dispatch system may identify the medical situation, select an appropriate type of UAV, and send a message to the local dispatch system 408 that indicates that a UAV of the selected type should be dispatched to the target location. In either case, the central dispatch system 408 may then relay the message to the appropriate local dispatch system 410, which may operate a deployment system to launch the selected UAV.

In some embodiments, block 608 may involve one or more components of the medical-support system sending a message to instruct a deployment system to launch the selected UAV, or directly operating the deployment system to launch the selected UAV. Further, block 608 could involve one or more components of the medical-support system preparing the selected UAV to travel to the target location, such as by determining and setting way points to allow the UAV to navigate to the target location.

VI. Conclusion

Where example embodiments involve information related to a person or a device of a person, the embodiments should be understood to include privacy controls. Such privacy controls include, at least, anonymization of device identifiers, transparency and user controls, including functionality that would enable users to modify or delete information relating to the user's use of a product.

Further, in situations in where embodiments discussed herein collect personal information about users, or may make use of personal information, the users may be provided with an opportunity to control whether programs or features collect user information (e.g., information about a user's medical history, social network, social actions or activities, profession, a user's preferences, or a user's current location), or to control whether and/or how to receive content from the content server that may be more relevant to the user. In addition, certain data may be treated in one or more ways before it is stored or used, so that personally identifiable information is

25

removed. For example, a user's identity may be treated so that no personally identifiable information can be determined for the user, or a user's geographic location may be generalized where location information is obtained (such as to a city, ZIP code, or state level), so that a particular location of a user cannot be determined. Thus, the user may have control over how information is collected about the user and used by a content server.

The particular arrangements shown in the Figures should not be viewed as limiting. It should be understood that other embodiments may include more or less of each element shown in a given Figure. Further, some of the illustrated elements may be combined or omitted. Yet further, an exemplary embodiment may include elements that are not illustrated in the Figures.

Additionally, while various aspects and embodiments have been disclosed herein, other aspects and embodiments will be apparent to those skilled in the art. The various aspects and embodiments disclosed herein are for purposes of illustration and are not intended to be limiting, with the true scope and spirit being indicated by the following claims. Other embodiments may be utilized, and other changes may be made, without departing from the spirit or scope of the subject matter presented herein. It will be readily understood that the aspects of the present disclosure, as generally described herein, and illustrated in the figures, can be arranged, substituted, combined, separated, and designed in a wide variety of different configurations, all of which are contemplated herein.

We claim:

1. A computer-implemented method comprising:
 - identifying, by a processor, a remote medical situation;
 - determining, by the processor, a target location corresponding to the identified remote medical situation;
 - selecting, by the processor, an unmanned aerial vehicle (UAV) from a plurality of UAVs that are configured to provide medical support for a plurality of medical situations, wherein the plurality of UAVs comprises at least a first UAV configured to provide medical support for a first medical situation and a second UAV configured to provide medical support for a second medical situation, and wherein the selection of the UAV is based at least in part on a determination that the selected UAV is configured to provide medical support for the identified remote medical situation; and
 - causing the selected UAV to: (a) travel to the target location in a forward-flight mode to provide medical support for the identified remote medical situation, (b) transition to a hover flight mode when the UAV is located at or near to the target location, and (c) while in the hover flight mode at or near to the target location, provide at least some medical support for the remote medical situation, wherein, to provide at least some medical support for the remote medical situation while in the hover flight mode, the UAV uses a winch to lower one or more medical-support items to a ground at or near the target location.
2. The method of claim 1, wherein identifying the remote medical situation comprises:
 - receiving a communication that originated from a remote device; and
 - identifying the remote medical situation based on information provided by the communication.
3. The method of claim 2, wherein the communication comprises at least one of: (a) a phone call, (b) a text-message, and (c) an electronic message generated by an application of the remote device.

26

4. The method of claim 2, wherein the information provided by the communication comprises location information.

5. The method of claim 2, wherein the information provided by the communication comprises information related to the identified remote medical situation.

6. The method of claim 2, wherein determining the target location comprises receiving, from the remote device, a message that indicates the location of the remote device.

7. The method of claim 1, wherein selecting the UAV from the plurality of UAVs comprises:

determining a type of the identified remote medical situation; and

selecting, from the plurality of UAVs, a UAV that has a medical-support configuration to provide or assist in medical support for the determined type of medical situation.

8. The method of claim 7, wherein the medical-support configuration comprises one or more items to provide or assist in medical support for the remote medical situation.

9. The method of claim 8, wherein the one or more items comprise a defibrillator.

10. The method of claim 8, wherein the one or more items comprise one or more of: (a) a medicine, (b) a trauma treatment item, and (c) a diagnostic tool.

11. The method of claim 8, wherein the medical-support configuration comprises a one or more operational functions to provide or assist in medical support for the identified remote medical situation.

12. A non-transitory computer readable medium having stored therein instructions that are executable to cause a processor to perform functions comprising:

identifying a remote medical situation;

determining a target location corresponding to the remote medical situation;

selecting an unmanned aerial vehicle (UAV) from a plurality of UAVs that are configured to provide medical support for a plurality of medical situations, wherein the plurality of UAVs comprises at least a first UAV configured to provide medical support for a first medical situation and a second UAV configured to provide medical support for a second medical situation, and wherein the selection of the UAV is based at least in part on a determination that the selected UAV is configured to provide medical support for the identified remote medical situation; and

causing the selected UAV to: (a) travel in a forward-flight mode to the target location to provide medical support for the identified remote medical situation, (b) transition to a hover flight mode when the UAV is located at or near to the target location, and (c) while in the hover flight mode at or near to the target location, provide at least some medical support for the remote medical situation, wherein, to provide at least some medical support for the remote medical situation while in the hover flight mode, the UAV uses a winch to lower one or more medical-support items to a ground at or near the target location.

13. The non-transitory computer readable medium of claim 12, further having stored therein instructions that are executable to cause a processor to perform functions comprising:

determining a type of the identified remote medical situation; and

selecting, from the plurality of UAVs, a UAV that has a medical-support configuration to provide or assist in medical support for the determined type of medical situation.

14. The non-transitory computer readable medium of claim 13, wherein the medical-support configuration comprises a

package of one or more items to provide or assist in medical support for the identified remote medical situation.

15. The non-transitory computer readable medium of claim 13, wherein the medical-support configuration comprises a one or more operational functions to provide or assist in medical support for the identified remote medical situation.

16. The non-transitory computer readable medium of claim 12, wherein selecting the UAV from the plurality of UAVs comprises:

- determining a user-account associated with the identified remote medical situation;
- determining a service level for the user-account; and
- using the service level as a further basis to select the UAV.

17. A medical-support system comprising:

at least one non-transitory computer readable medium in at least one component of the system; and

program instructions stored in the at least one non-transitory computer readable medium and executable by at least one processor to:

- identify a remote medical situation;
- determine a target location corresponding to the identified remote medical situation;

unmanned aerial vehicle (UAV) from a plurality of UAVs that are configured to provide medical support for a plurality of remote medical situations, wherein the plurality of UAVs comprises at least a first UAV configured to provide medical support for a first medical situation and a second UAV configured to provide medical support for a second medical situation, and wherein the selection of the UAV is based at least in part on a determination that the selected UAV is configured to provide medial support for the identified remote medical situation; and

causes the selected UAV to: (a) travel in a forward-flight mode to the target location to provide medical support for the identified remote medical situation, (b) transition to a hover flight mode when the UAV is located at or near to the target location, and (c) while in the hover flight mode, provide at least some medical support for the remote medical situation, wherein, to provide at least some medical support for the remote medical situation while in the hover flight mode, the UAV uses a winch to lower one or more medical-support items to a ground at or near the target location.

18. The medical-support system of claim 17, wherein the at least one component having the at least one non-transitory computer readable medium comprises one or more of: (a) one or more access systems and (b) one or more dispatch systems, and (c) one or more deployment systems.

19. The medical-support system of claim 17, wherein the one or more dispatch systems comprise at least one central dispatch systems and one or more local dispatch systems.

20. The medical-support system of claim 17, further comprising program instructions stored in the at least one non-transitory computer readable medium and executable by at least one processor to:

- determine a type of the identified remote medical situation; and
- select, from the plurality of UAVs, a UAV that has a medical-support configuration to provide or assist in medical support for the determined type of medical situation.

21. The medical-support system of claim 20, wherein the medical-support configuration comprises a package of one or more items to provide or assist in medical support for the identified remote medical situation.

22. The medical-support system of claim 20, wherein the medical-support configuration comprises a one or more operational functions to provide or assist in medical support for the identified remote medical situation.

23. The medical-support system of claim 17, wherein selecting the UAV from the plurality of UAVs comprises:

- determining a user-account associated with the identified remote medical situation;
- determining a service level for the user-account; and
- using the service level as a further basis to select the UAV.

24. A medical-support system comprising:

a plurality of unmanned aerial vehicles (UAVs), wherein the plurality of UAVs are configured to provide medical support for a plurality of medical situations, and wherein the plurality of UAVs comprises at least a first UAV configured to provide medical support for a first medical situation and a second UAV configured to provide medical support for a second medical situation; and

at least one component that is configured to: identify a remote medical situation; determine a target location corresponding to the identified remote medical situation;

select an unmanned aerial vehicle (UAV) from a plurality of UAVs, wherein the selection of the UAV is based at least in part on a determination that the selected UAV is configured to provide medial support for the identified remote medical situation; and

cause the selected UAV to: (a) travel in a forward-flight mode to the target location to provide medical support for the identified remote medical situation, (b) transition to a hover flight mode when the UAV is located at or near to the target location, and (c) while in the hover flight mode, provide at least some medical support for the remote medical situation, wherein, to provide at least some medical support for the remote medical situation while in the hover flight mode, the UAV uses a winch to lower one or more medical-support items to a ground at or near the target location.

25. The medical-support system of claim 24 wherein the at least one component comprises one or more of: (a) an access system, (b) a dispatch system, and (c) a deployment system.