



US009139310B1

(12) **United States Patent**
Wang

(10) **Patent No.:** **US 9,139,310 B1**
(45) **Date of Patent:** **Sep. 22, 2015**

- (54) **SYSTEMS AND METHODS FOR UAV BATTERY EXCHANGE** 7,398,946 B1 * 7/2008 Marshall 244/58
7,714,536 B1 * 5/2010 Silberg et al. 320/108
8,164,300 B2 4/2012 Agassi et al.
- (71) Applicant: **SZ DJI TECHNOLOGY Co., Ltd,** 8,511,606 B1 * 8/2013 Lutke et al. 244/58
Shenzhen (CN) 8,725,330 B2 5/2014 Failing
8,876,057 B2 * 11/2014 Alber et al. 244/137.1
8,880,241 B2 * 11/2014 Mohamadi 701/2
- (72) Inventor: **Mingxi Wang,** Shenzhen (CN) 2004/0211862 A1 10/2004 Elam
2009/0140095 A1 * 6/2009 Sirohi et al. 244/17.19
- (73) Assignee: **SZ DJI TECHNOLOGY CO., LTD,** 2011/0071705 A1 3/2011 Matuszeski et al.
Shenzhen (CN) 2011/0106294 A1 5/2011 Bebbington
2012/0126745 A1 5/2012 Partovi et al.
- (*) Notice: Subject to any disclaimer, the term of this patent is extended or adjusted under 35 U.S.C. 154(b) by 0 days. (Continued)

FOREIGN PATENT DOCUMENTS

- (21) Appl. No.: **14/495,696** CN 101976731 A 2/2011
CN 102044889 A 5/2011
- (22) Filed: **Sep. 24, 2014** (Continued)

Related U.S. Application Data

- (63) Continuation of application No. PCT/CN2014/083968, filed on Aug. 8, 2014.

OTHER PUBLICATIONS

International search report and written opinion dated Dec. 31, 2014 for PCT/CN2014/083963.
(Continued)

- (51) **Int. Cl.**
B64B 1/24 (2006.01)
B64F 1/36 (2006.01)
B64C 39/02 (2006.01)
B64F 1/18 (2006.01)
B64F 1/20 (2006.01)

Primary Examiner — Christopher P Ellis
(74) *Attorney, Agent, or Firm* — Wilson Sonsini Goodrich & Rosati

- (52) **U.S. Cl.**
CPC . **B64F 1/36** (2013.01); **B64C 39/02** (2013.01);
B64F 1/18 (2013.01); **B64F 1/20** (2013.01);
B64C 2201/042 (2013.01); **B64C 2201/066**
(2013.01)

(57) **ABSTRACT**

Systems and methods are provided for swapping the battery on an unmanned aerial vehicle (UAV). The UAV may be able to identify and land on an energy provision station autonomously. The UAV may take off and/or land on the energy provision station. The UAV may communicate with the energy provision station. The energy provision station may store and charge batteries for use on a UAV.

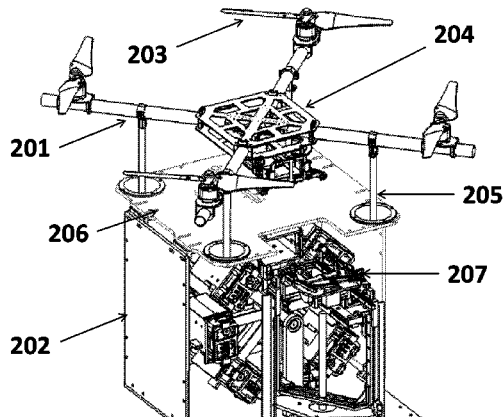
- (58) **Field of Classification Search**
USPC 244/53 R, 135 A, 1 R, 2, 17.11, 54, 129.1
See application file for complete search history.

(56) **References Cited**

U.S. PATENT DOCUMENTS

- 6,604,706 B1 * 8/2003 Bostan 244/6
6,840,480 B2 * 1/2005 Carroll 244/120

30 Claims, 21 Drawing Sheets



(56)

References Cited

U.S. PATENT DOCUMENTS

2013/0081245 A1 4/2013 Vavrina et al.
2014/0032034 A1* 1/2014 Raptopoulos et al. 701/25
2014/0303814 A1* 10/2014 Burema et al. 701/3

FOREIGN PATENT DOCUMENTS

CN 102064578 A 5/2011
CN 202190096 U 4/2012
CN 102738890 A 10/2012
CN 202642094 U 1/2013
CN 202651882 U 1/2013
CN 1029009540 A 2/2013
CN 202922160 U 5/2013
CN 202929383 U 5/2013
CN 203434741 U 2/2014
CN 203491696 U 3/2014
CN 103738503 A 4/2014

CN 203698671 U 7/2014
CN 203845022 U 9/2014
EP 2664539 A1 11/2013
EP 2799336 A1 11/2014
JP 3182689 B2 7/2001
KR 20130122715 A 11/2013
WO WO 2012/064891 A2 5/2012
WO WO 2013/055265 A1 4/2013

OTHER PUBLICATIONS

International search report and written opinion dated Apr. 27, 2015 for PCT/CN2014/083968.
U.S. Appl. No. 14/634,489, filed Feb. 27, 2015, Wang.
International search report and written opinion dated Mar. 12, 2015 for PCT/CN2014/091939.
International search report and written opinion dated May 4, 2015 for PCT/CN2014/083957.
Office action dated Aug. 4, 2015 for U.S. Appl. No. 14/634,489.

* cited by examiner

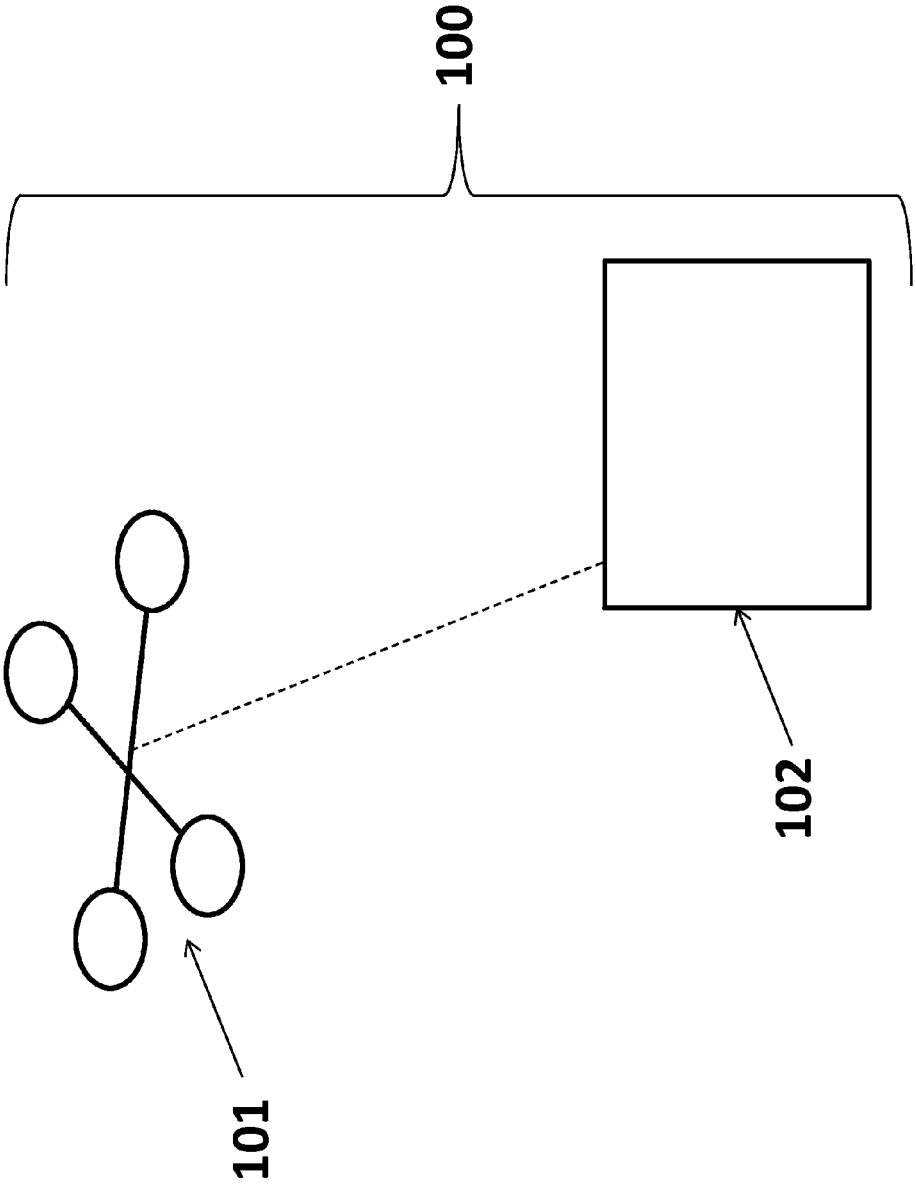


FIG. 1

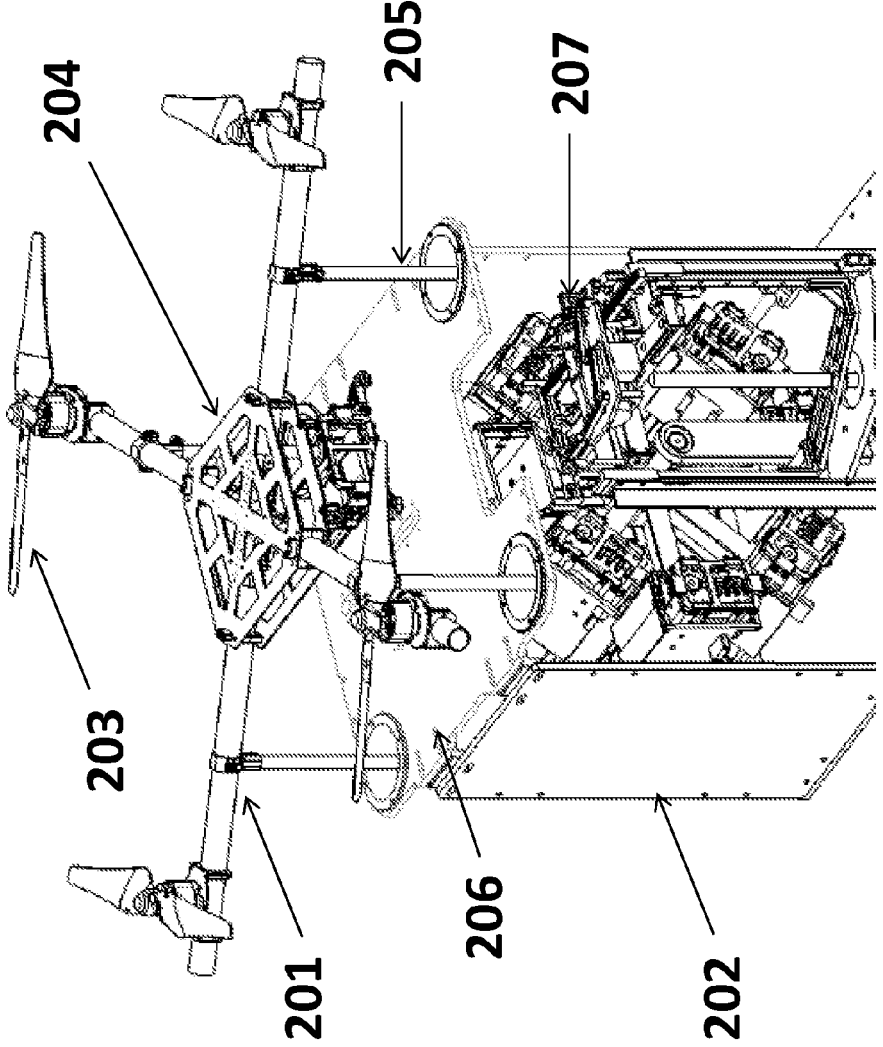


FIG. 2

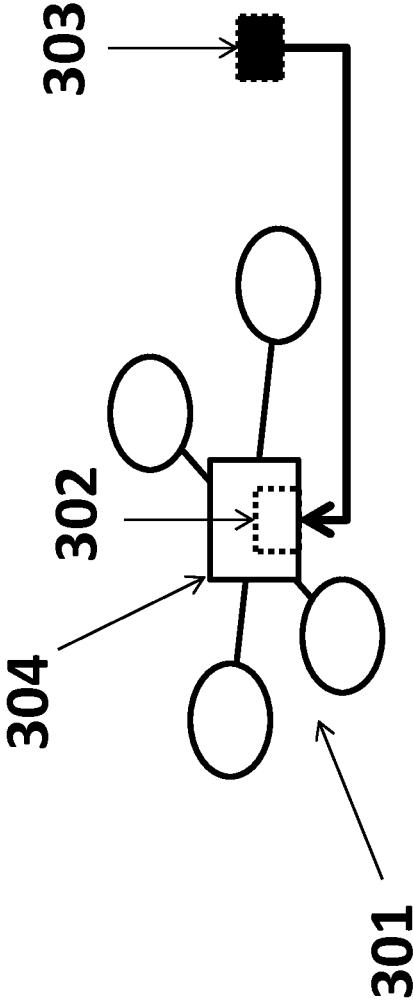


FIG. 3

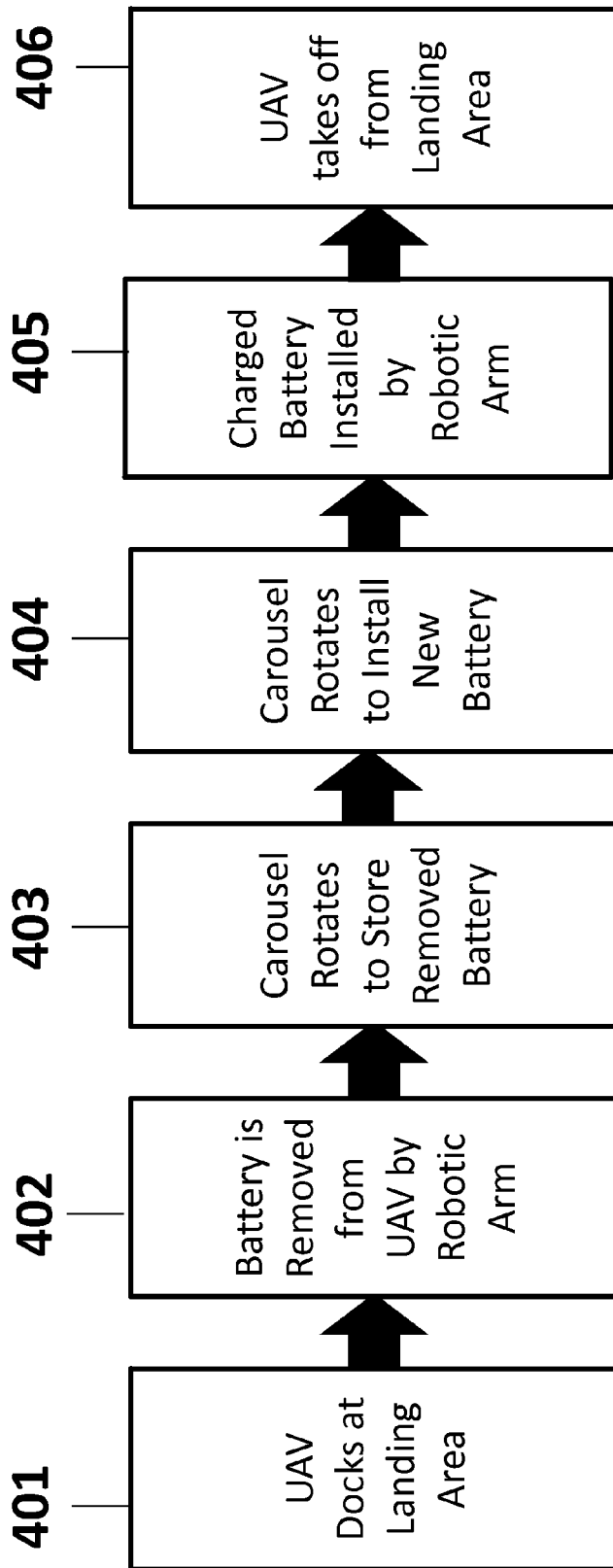


FIG. 4

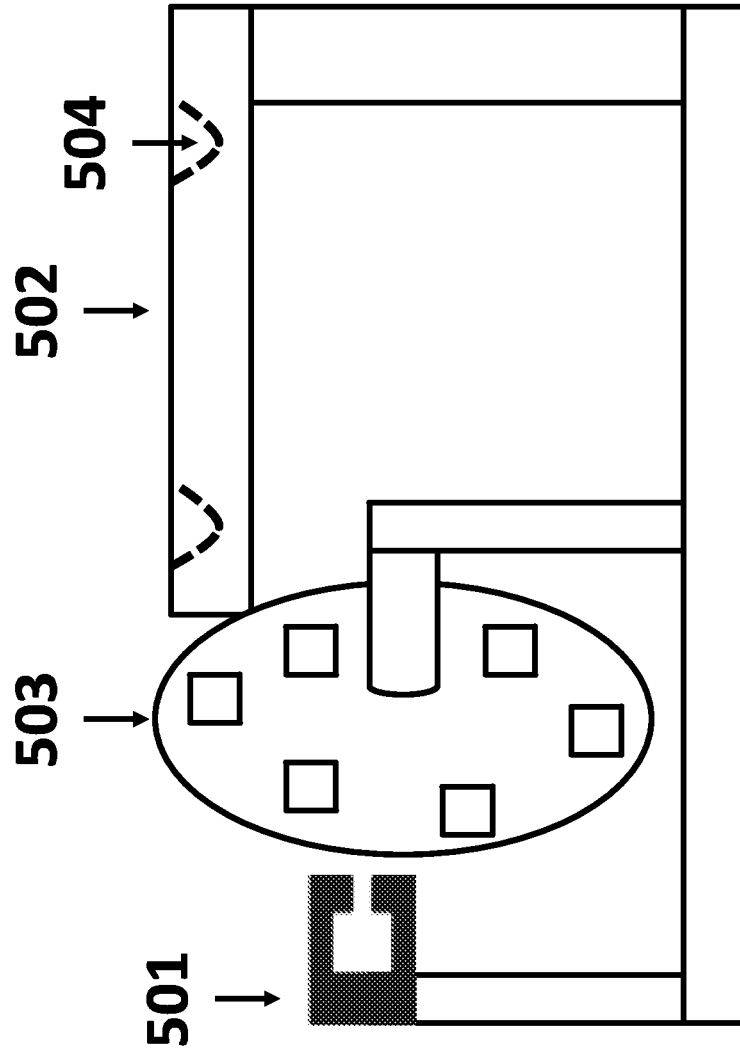


FIG. 5

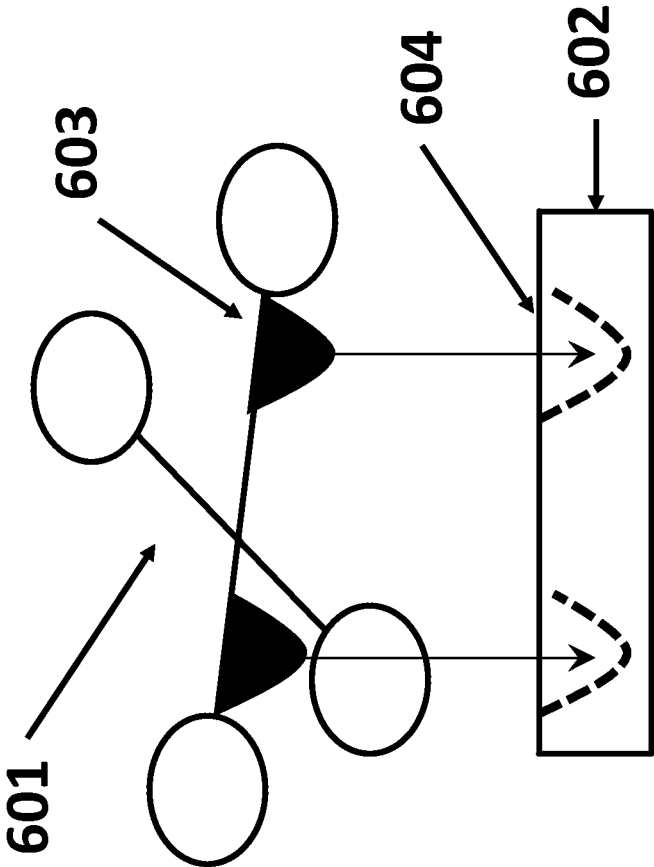


FIG. 6

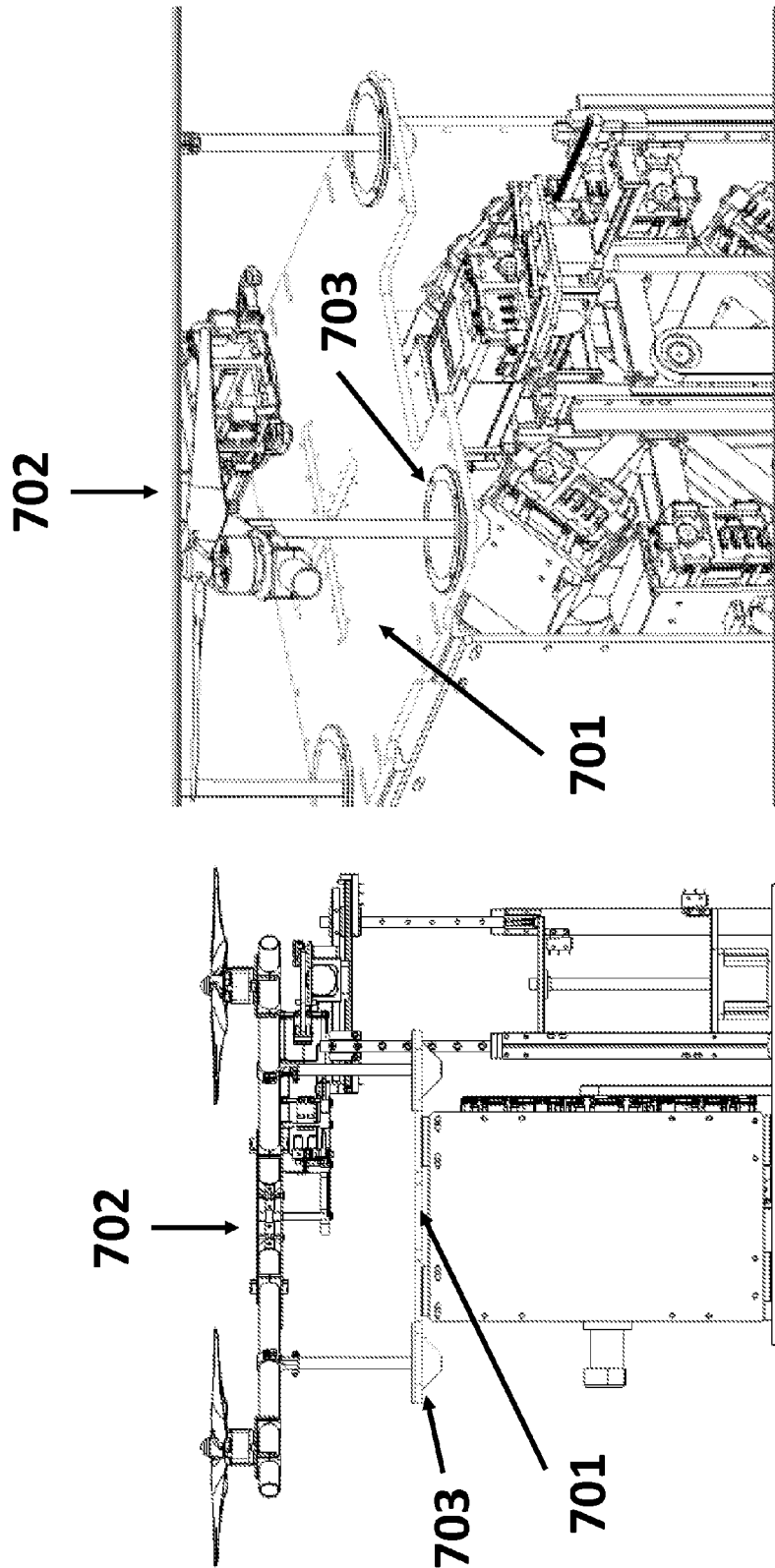


FIG. 7

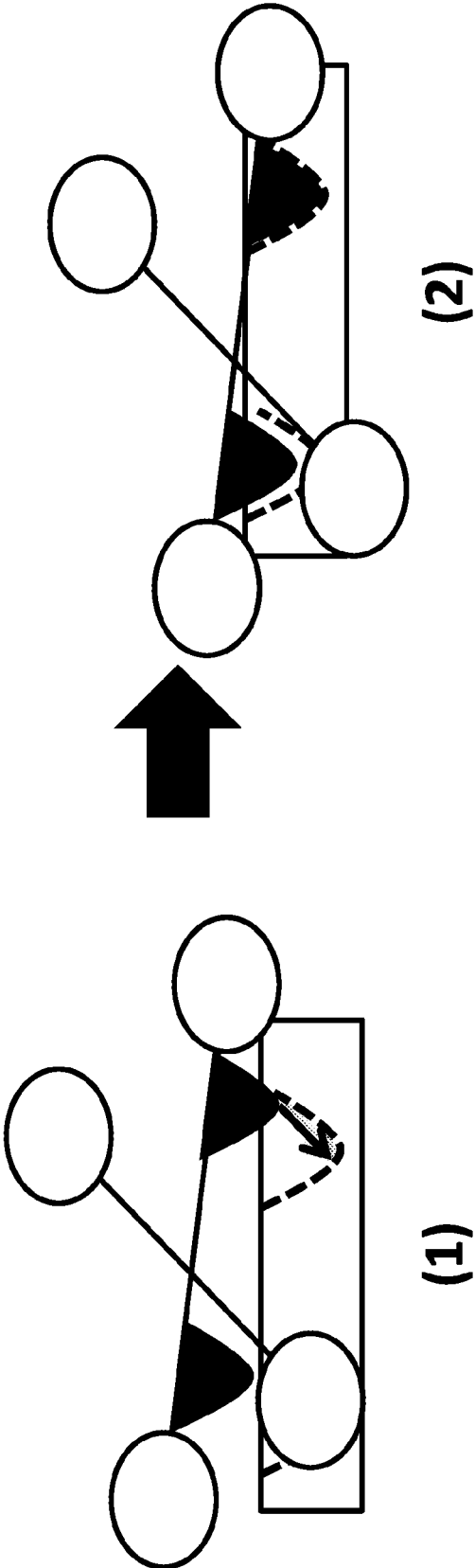


FIG. 8

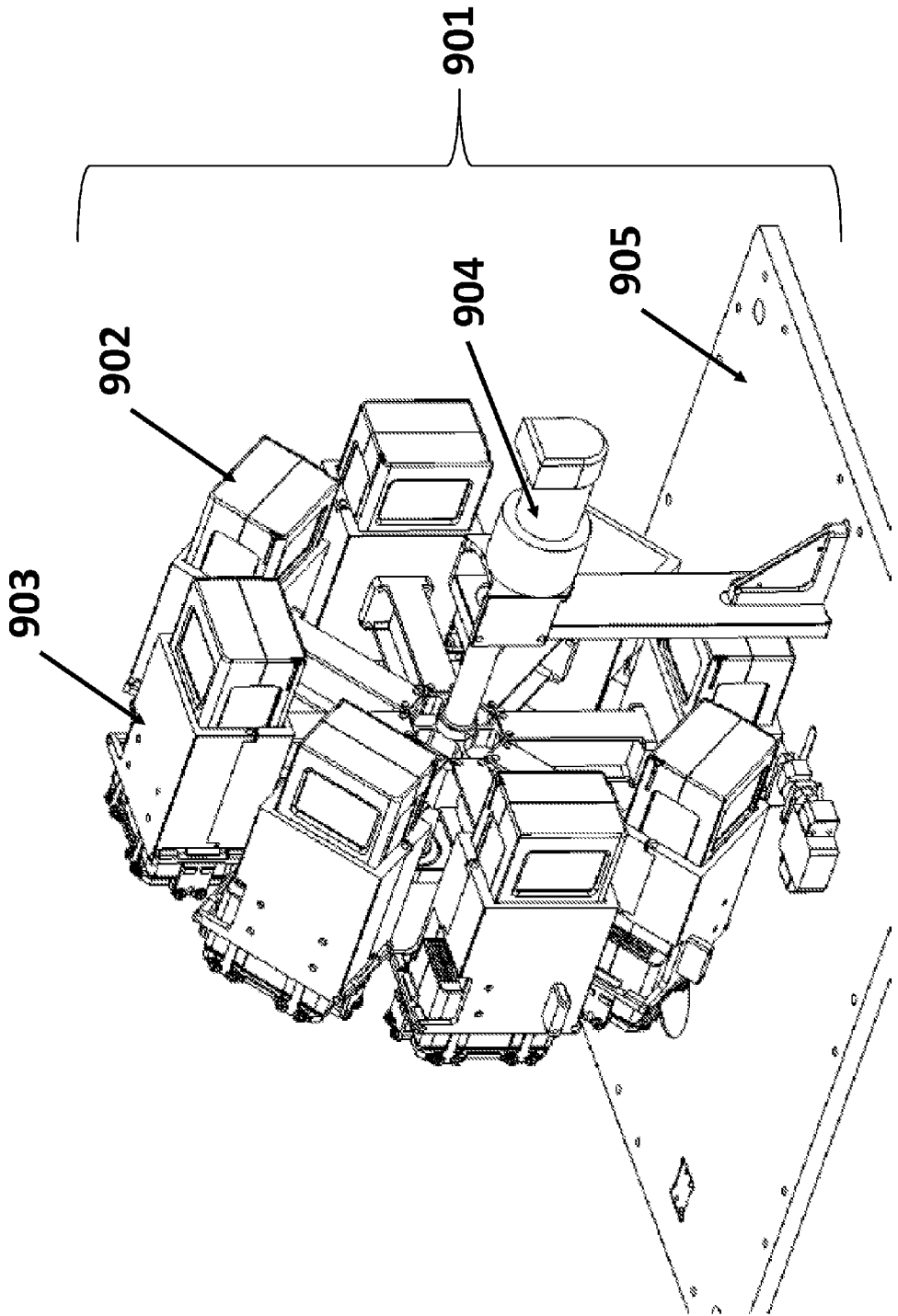


FIG. 9

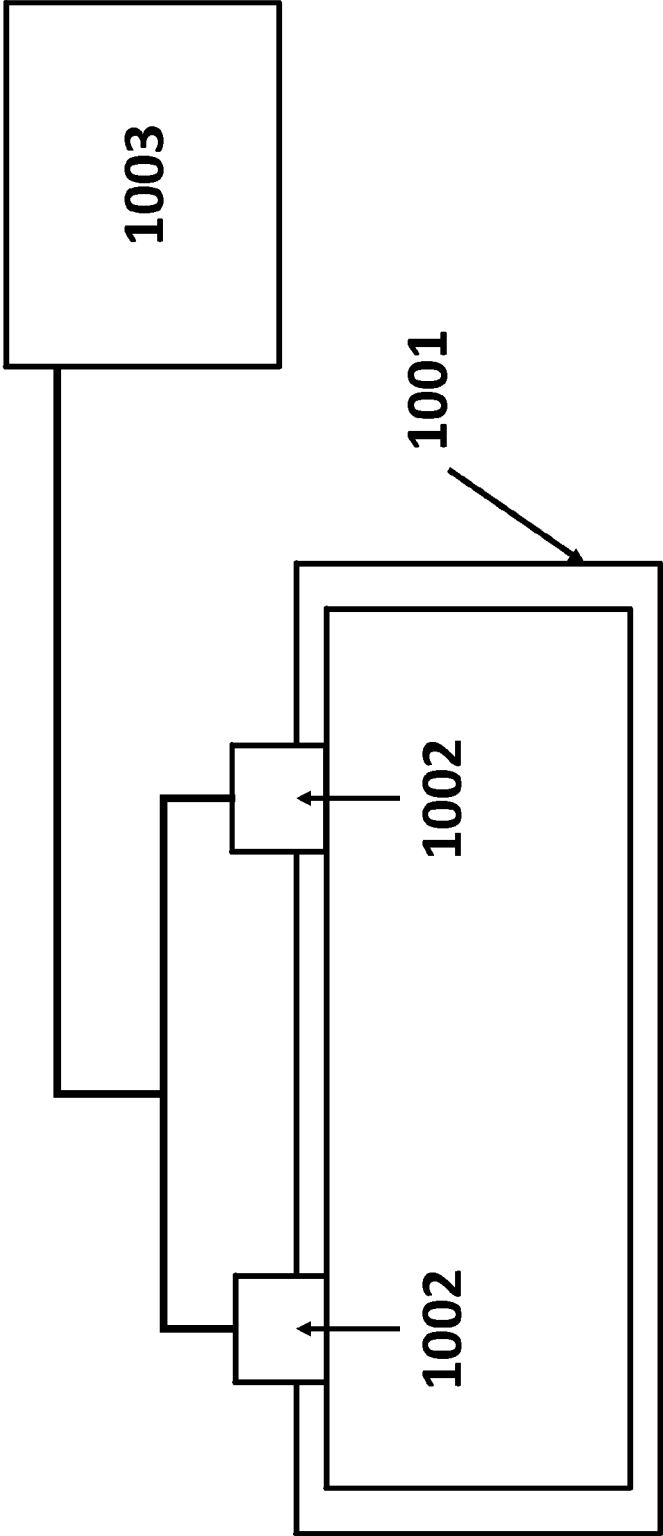


FIG. 10

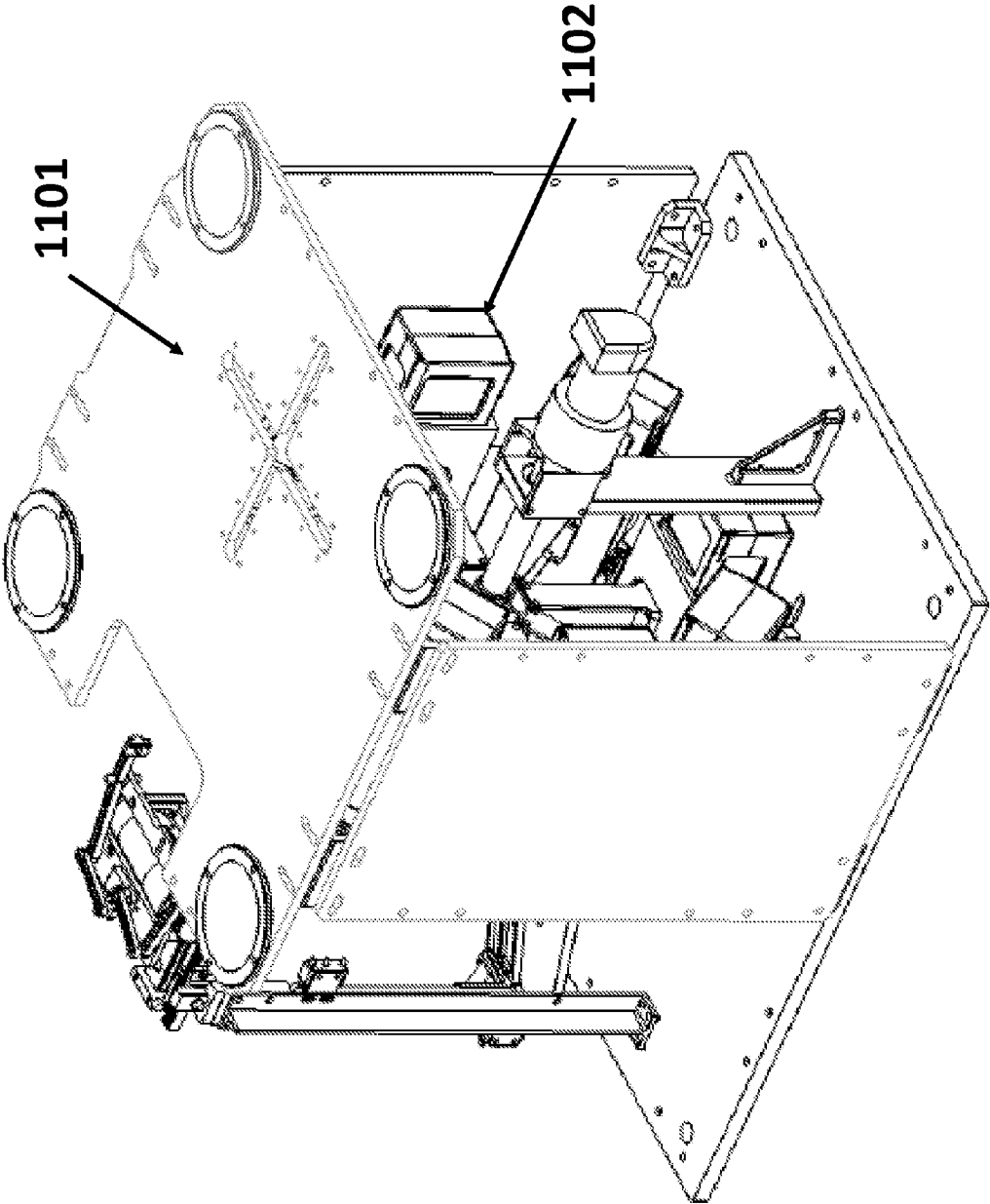


FIG. 11

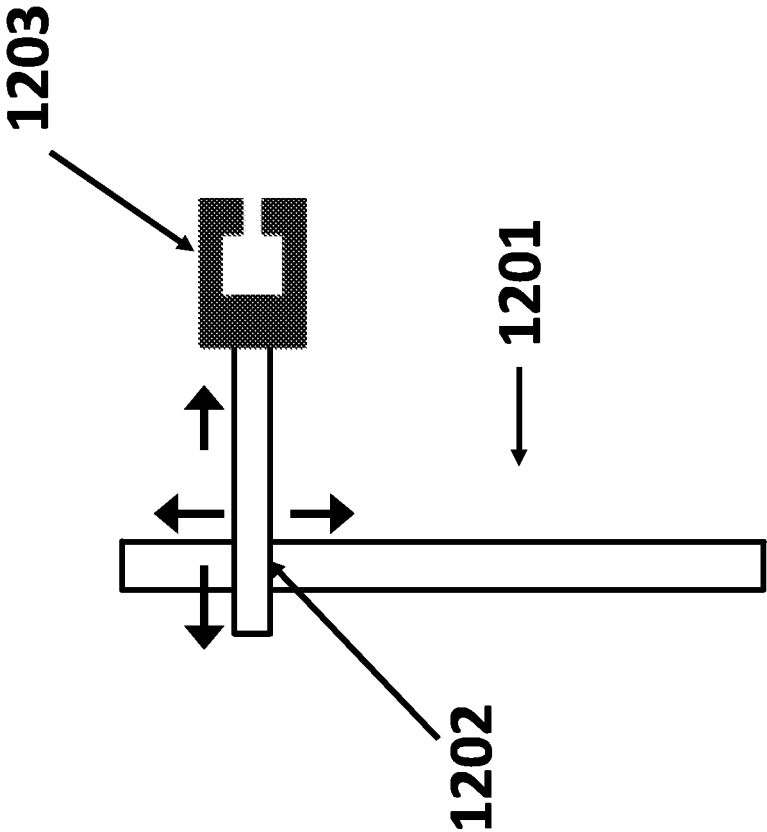


FIG. 12

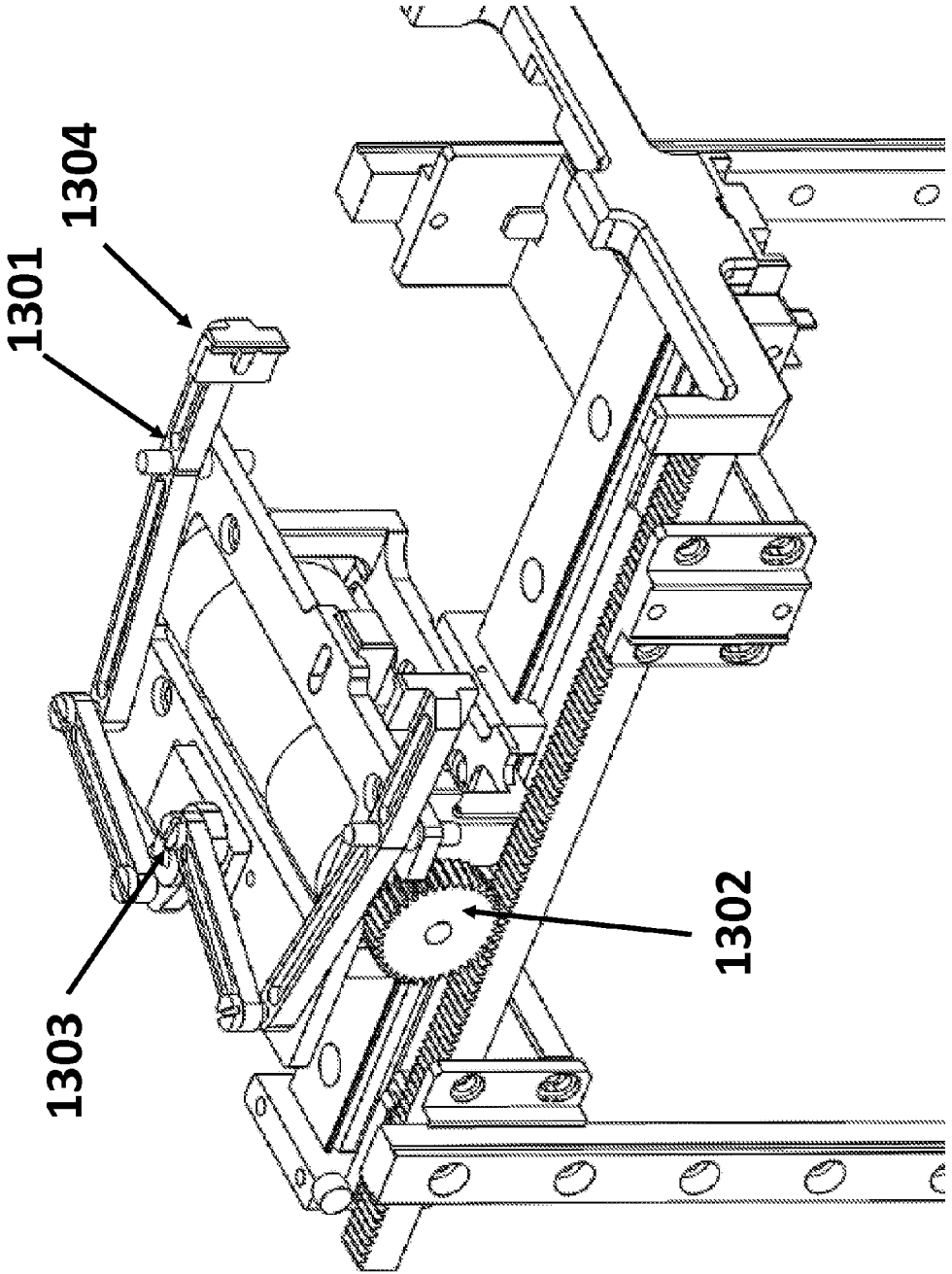


FIG. 13

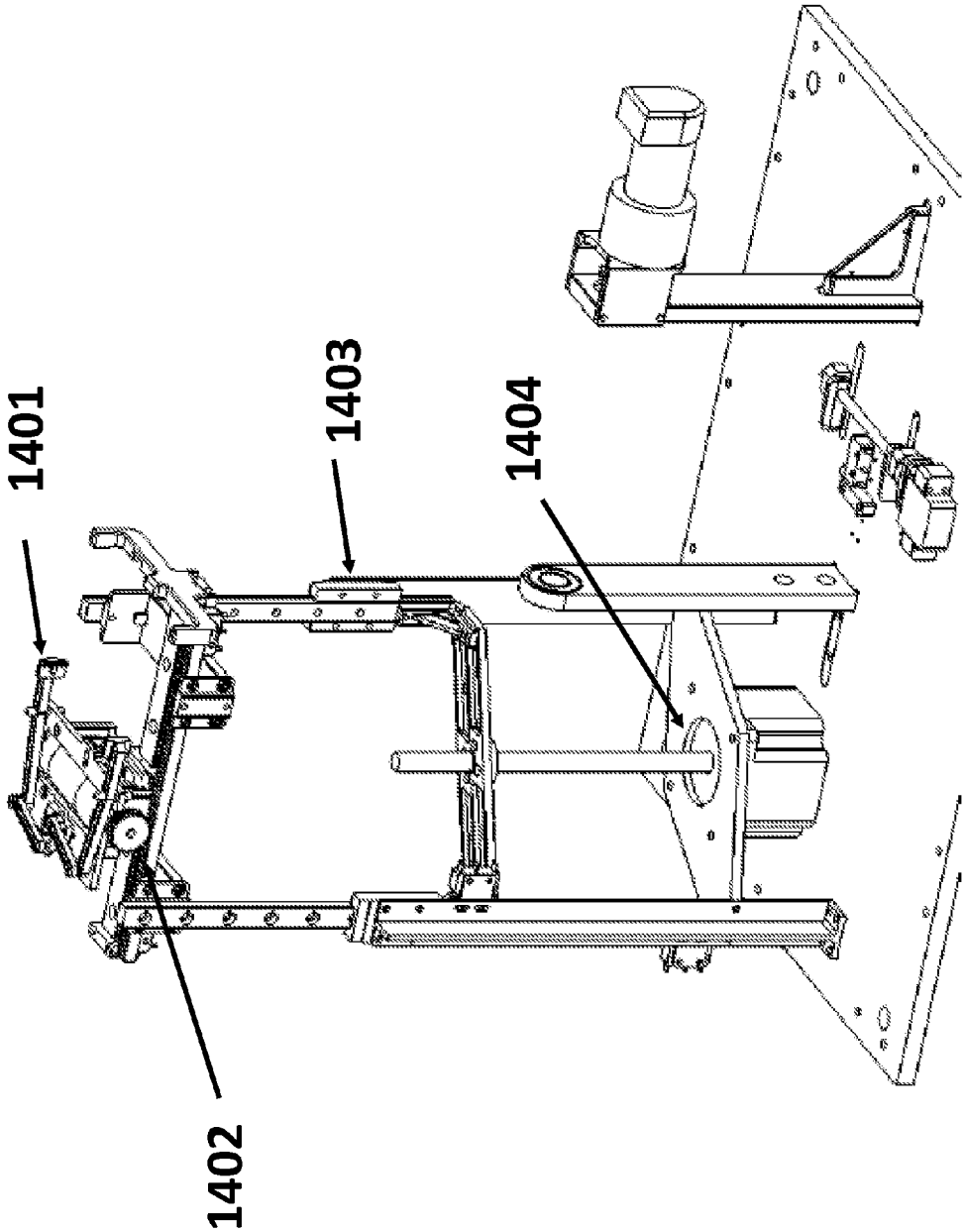


FIG. 14

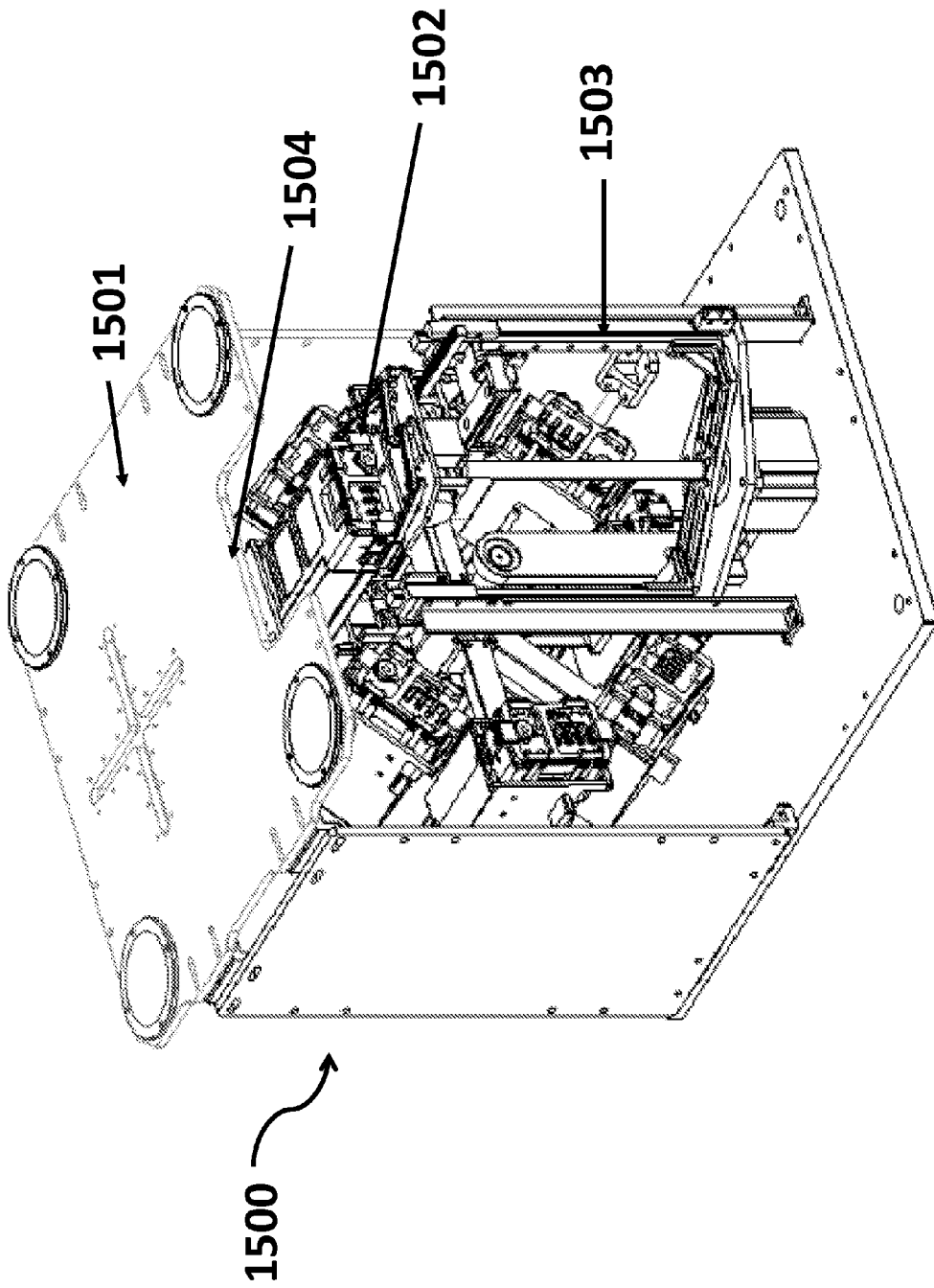


FIG. 15

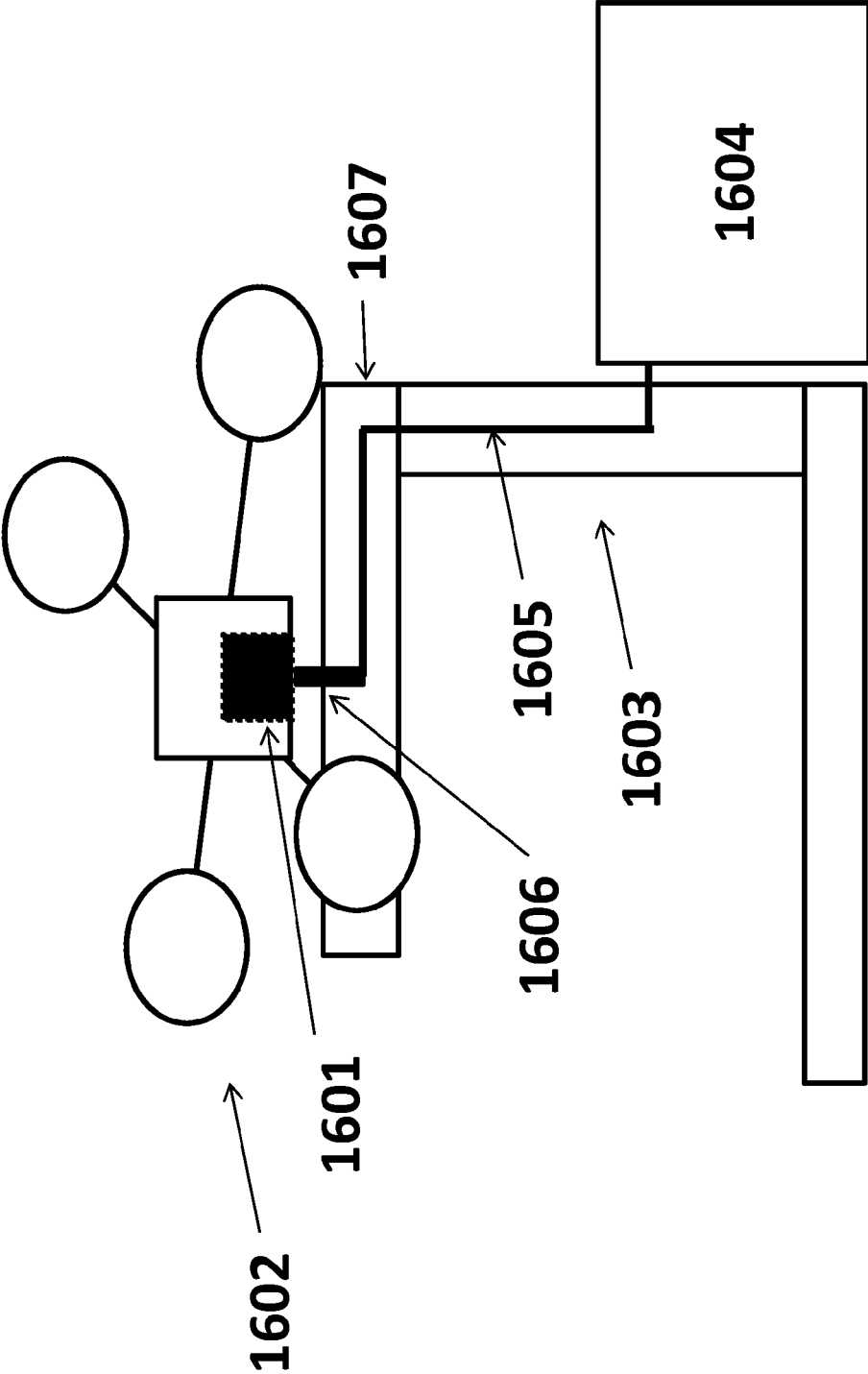


FIG. 16

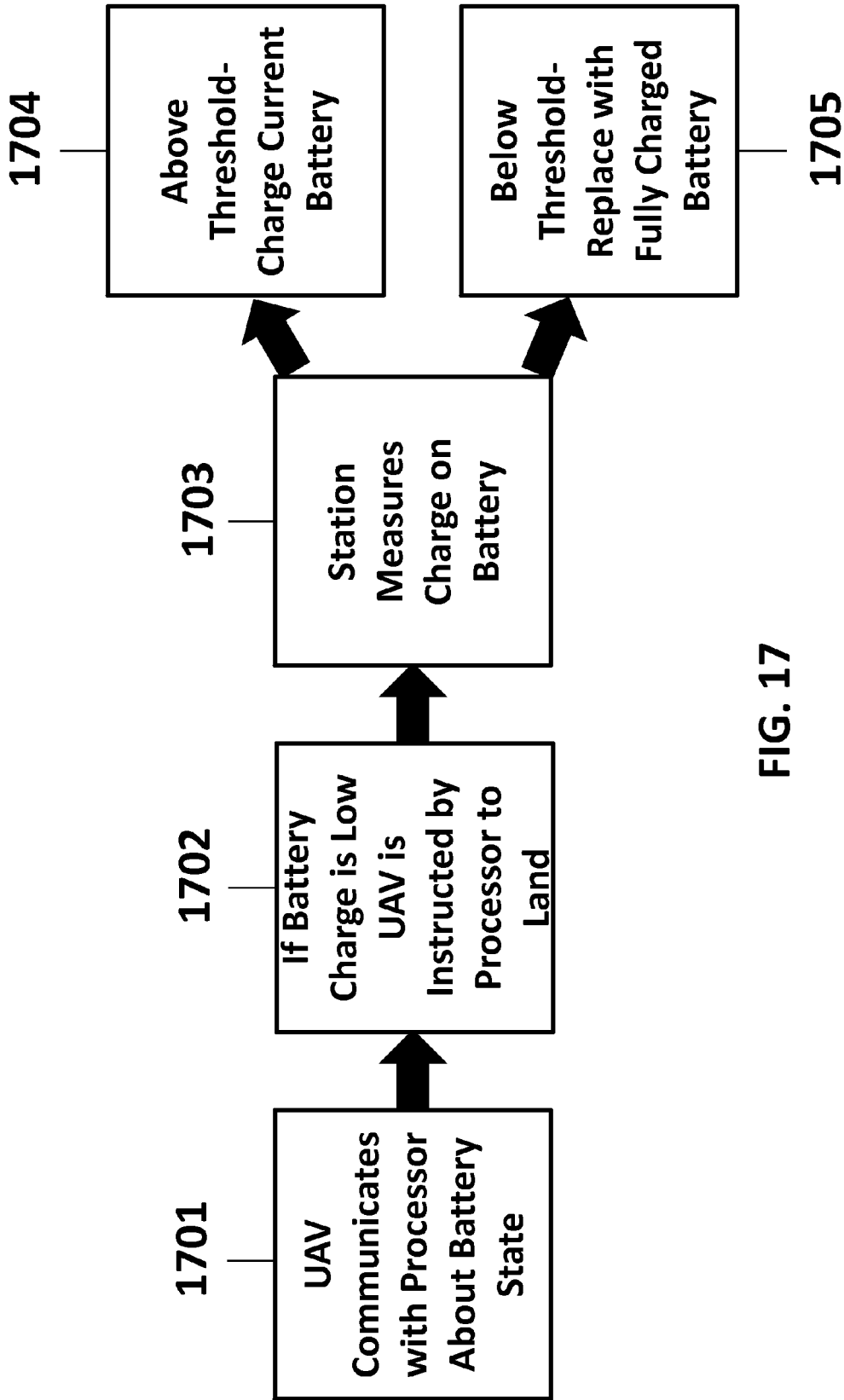


FIG. 17

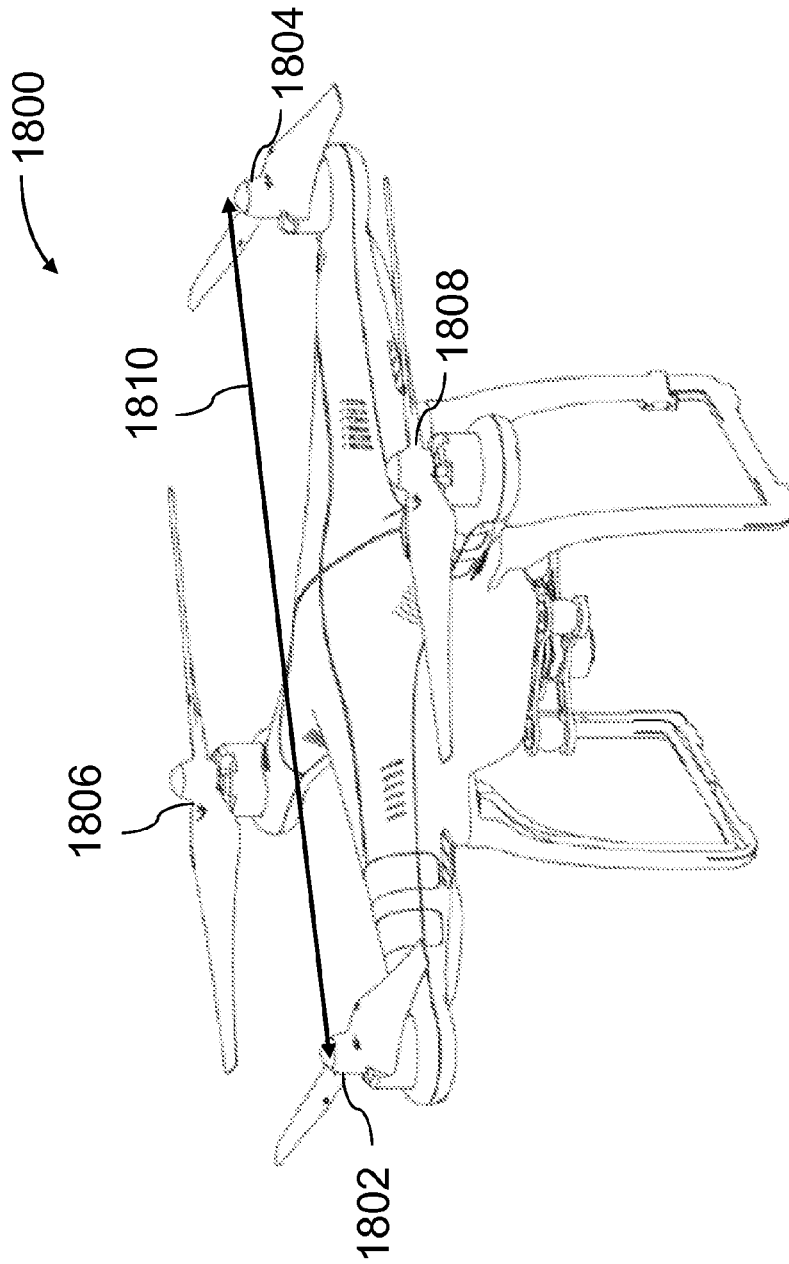


FIG. 18

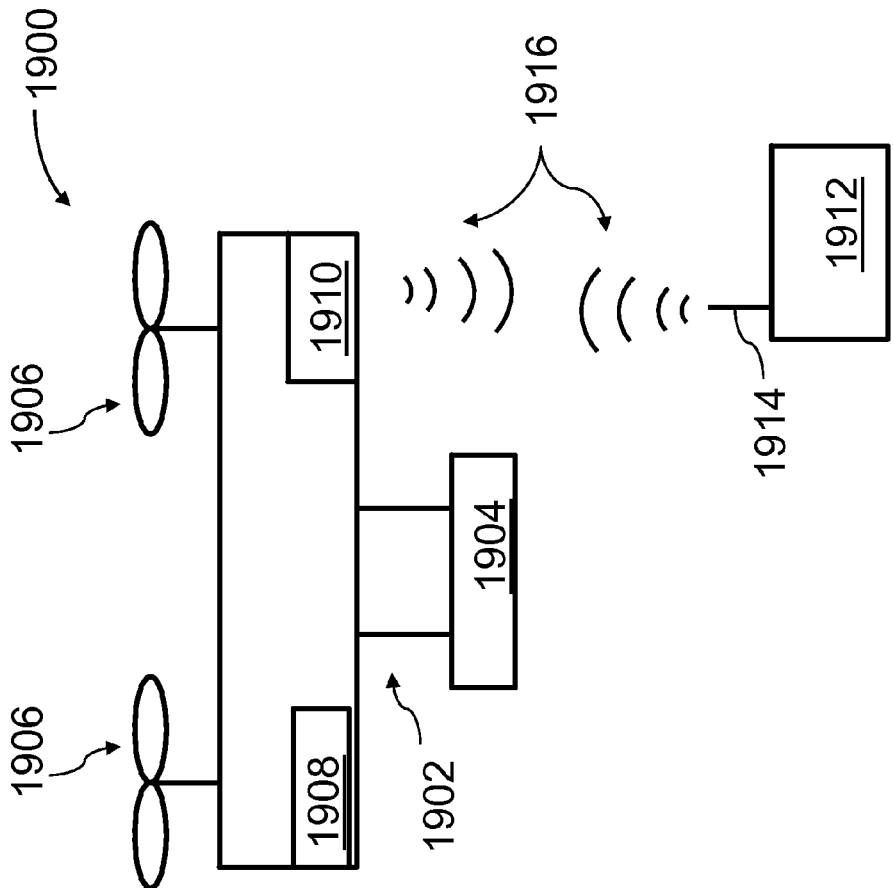


FIG. 19

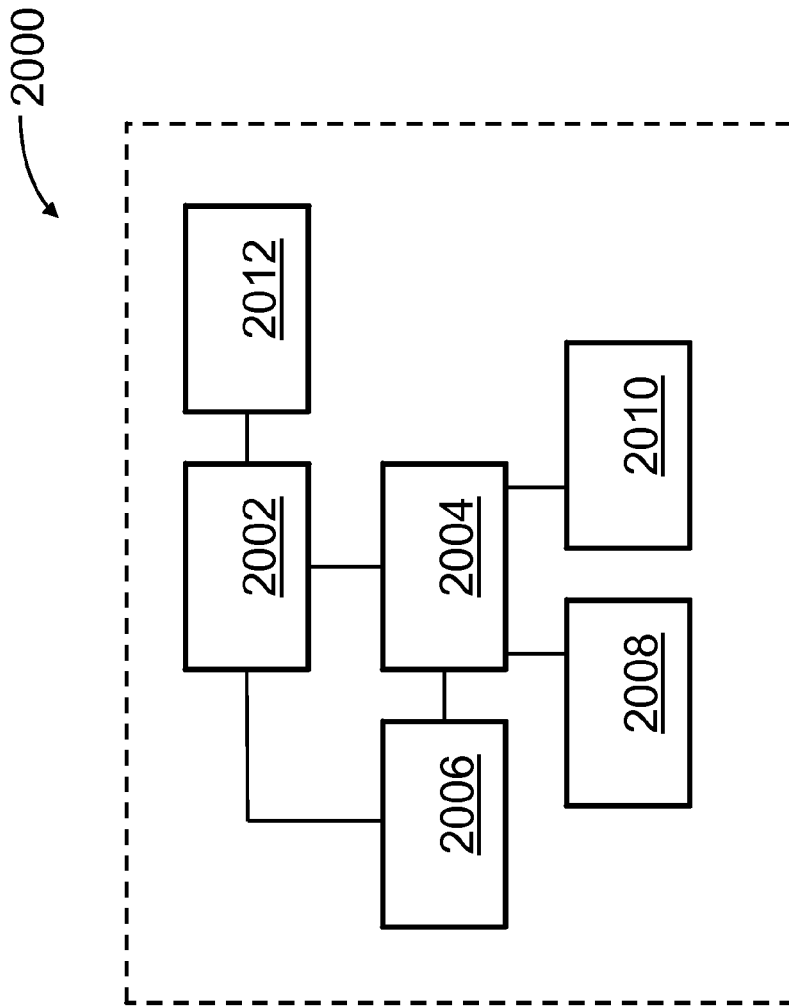


FIG. 20

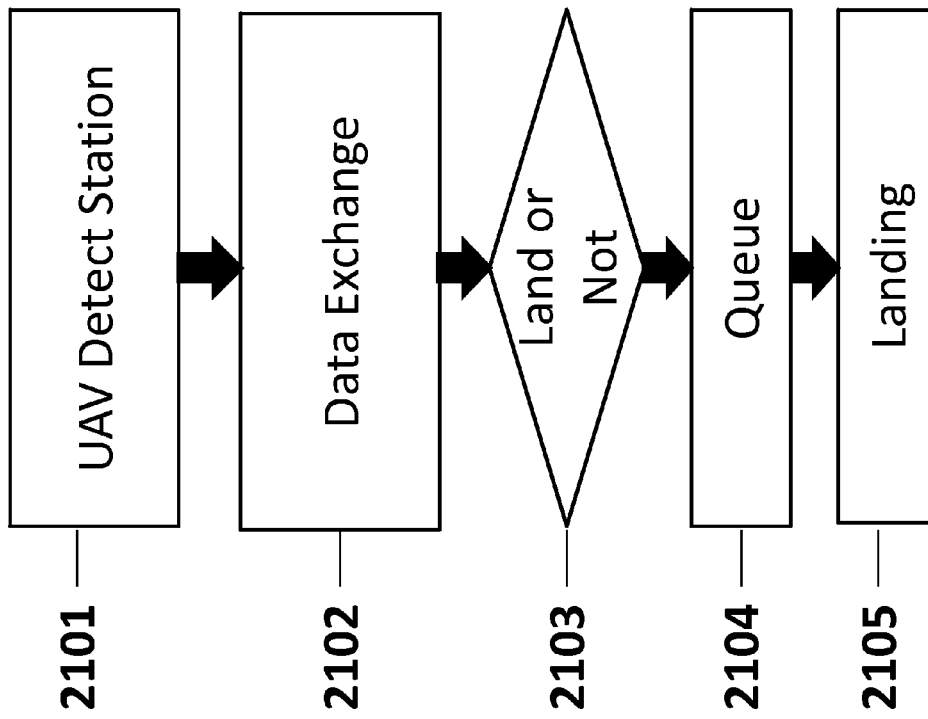


FIG. 21

SYSTEMS AND METHODS FOR UAV BATTERY EXCHANGE

CROSS REFERENCE

This application is a continuation application of International Application No. PCT/CN2014/083968, filed on Aug. 8, 2014, the content of which is hereby incorporated by reference in its entirety.

BACKGROUND OF THE INVENTION

Aerial vehicles such as unmanned aerial vehicles (UAVs) can be used for performing surveillance, reconnaissance, and exploration tasks for military and civilian applications. Such aerial vehicles may carry a payload configured to perform a specific function.

A UAV may be powered by an on-board rechargeable battery. In some instances, a UAV may need to travel a distance that will exceed the available charge on the on-board battery. This may severely limit the range and use of the UAV.

SUMMARY OF THE INVENTION

A need exists to provide increased range of travel for UAV's. Increased range may be useful when UAVs may be used to deliver items, spray an environment, or patrol or scan an area. An automated or semi-automated battery charging station may advantageously permit battery life on a UAV to be reloaded. Battery life may be reloaded on a UAV by recharging the on board battery of the UAV or exchanging the onboard battery for another battery.

An aspect of the invention is directed to a UAV energy provision station, said station comprising: a UAV landing area configured to support a UAV when the UAV is resting on the station, said UAV coupled to a first battery configured to power the UAV; a second battery capable of powering the UAV upon being coupled to the UAV; a battery charging unit capable of charging the first battery of the UAV; and a processor configured to receive information about a state of charge of the first battery and generate an instruction, depending on the state of charge of the first battery, to: (1) exchange the second battery for the first battery such that the first battery is decoupled from the UAV and the second battery is coupled to the UAV, or (2) charge the first battery with the battery charging unit.

In an embodiment of the invention the UAV may be capable of landing on the UAV energy provision station vertically and/or taking off from the UAV energy provision station vertically. The UAV may be a rotorcraft. The UAV may have a maximum dimension of no more than 100 cm. The UAV may comprise a recessed region into which a first battery is inserted to couple to the UAV and provide power to the UAV. A second battery may be configured to be inserted into the recessed region to couple to the UAV and provide power to the UAV. The battery charging unit of the energy provision station may be configured to charge the first battery while the first battery is inserted in the recessed region. The second battery may have the same form factor as the first battery.

The landing area of the energy provision station may comprise visible markers configured to aid the UAV in landing. The visible markers may comprise images. The images may aid a UAV in landing when a UAV recognizes a particular image indicative that the UAV is to land. The visible markers may comprise LED lights. The LED lights may flash in a

particular spatial or temporal pattern that a UAV may recognize as a particular spatial or temporal pattern that is indicative that the UAV is to land.

The UAV may transmit information to the energy provision station about the state of charge of the first battery. The information may be transmitted wirelessly to the energy provision station using a transmitter on board the UAV. The energy provision station may have a receiver that may be configured to receive the wirelessly transmitted information. The energy provision station may comprise a charge measuring component that measures the state of charge of the first battery when the UAV is landed on the station. The processor may generate the instructions to exchange the second battery with the first battery when the state of charge of the first battery is beneath a predetermined threshold value. The UAV energy provision station may be portable.

A method of providing energy to a UAV may be provided, said method comprising: providing the energy provision station as previously described; and receiving information, at the processor, about the state of charge of the first battery.

The method may include generating the instruction, with aid of the processor to (1) exchange the second battery for the first battery such that the first battery is decoupled from the UAV and the second battery is coupled to the UAV, or (2) charge the first battery with the battery charging unit. The method may further include (1) exchanging the second battery for the first battery such that the first battery is decoupled from the UAV and the second battery is coupled to the UAV, or (2) charging the first battery with the battery charging unit, in accordance with the generated instructions.

An additional aspect of the invention may be directed to a UAV battery changing station, said station comprising: a UAV landing area configured to support a UAV when the UAV is resting on the station, said UAV coupled to a first battery configured to power the UAV; a movable battery storage unit comprising a plurality of holding stations configured to collectively store a plurality of batteries capable of powering the UAV upon being coupled to the UAV, wherein the movable battery storage section is configured to permit simultaneous movement of the plurality of holding stations relative to the UAV landing area; and a battery replacement member configured to take a second battery from a holding station of the movable battery storage unit, and couple the second battery to the UAV.

In an embodiment of the invention the UAV may be capable of landing on the UAV energy provision station vertically and/or taking off from the UAV energy provision station vertically. The UAV may be a rotorcraft. The UAV may have a maximum dimension of no more than 100 cm. The UAV may include a recessed region into which a first battery is inserted to couple to the UAV and provide power to the UAV. A second battery may be configured to be inserted into the recessed region to couple to the UAV and provide power to the UAV. The battery charging unit of the energy provision station may be configured to charge the first battery while the first battery is inserted in the recessed region. The second battery may have the same form factor as the first battery.

The landing area of the energy provision station may comprise visible markers configured to aid the UAV in landing. The visible markers may comprise images. The images may aid a UAV in landing when a UAV recognizes a particular image indicative that the UAV is to land. The visible markers may comprise LED lights. The LED lights may flash in a particular spatial or temporal pattern that a UAV may recognize as a particular spatial or temporal pattern that is indicative that the UAV is to land.

3

The movable battery storage unit may comprise a carousel configuration for the plurality of holding stations. The carousel may include a plurality of holding stations configured to receive a battery. The holding stations may be capable of rotating around an axis of rotation. The axis of rotation may be oriented in a horizontal direction. The movable battery storage unit may comprise at least four holding stations. The at least four holding stations may be configured to rotate about the axis of rotation. The movable battery storage unit may include a battery charging unit capable of charging at least one battery in a holding station. The movable battery storage unit may be located beneath the UAV landing area. The movable battery storage unit may include a battery charging unit capable of charging at least one battery in a holding station.

In some instances the battery replacement member may be a mechanical elevator. The mechanical elevator may also be configured to decouple the first battery from the UAV. The mechanical elevator may include a robot arm clamp that may grasp the first battery to decouple the first battery from the UAV. The mechanical elevator may effect horizontal movement to decouple the first battery from the UAV. The mechanical elevator may effect vertical movement to transport the first battery to the movable battery storage unit. The mechanical elevator may effect vertical movement of the second battery from the movable battery storage unit to the UAV. The mechanical elevator may effect horizontal movement of the second battery to be coupled to the UAV.

In some cases the UAV battery changing station may be portable.

A method of changing a battery of a UAV may be provided in accordance with an aspect of the invention. The method may comprise: providing the UAV battery changing station as described elsewhere herein; landing the UAV on the UAV landing area; and using the battery replacement member to take the second battery and couple the second battery to the UAV. The method may further comprise moving the first battery to a holding station of the movable battery storage unit.

In an embodiment of the invention the charging station is a UAV battery changing station, said station comprising: a UAV landing area configured to support a UAV when the UAV is resting on the station, said UAV coupled to a first battery configured to power the UAV; a movable battery storage unit comprising a holding station configured to store a second battery capable of powering the UAV upon being coupled to the UAV, wherein the movable battery storage section is configured to permit rotational movement of the holding station about an axis of rotation; and a battery replacement member configured to take the second battery from the holding station of the movable battery storage unit, and couple the second battery to the UAV.

In an embodiment of the invention the UAV may be capable of landing on the UAV energy provision station vertically and/or taking off from the UAV energy provision station vertically. The UAV may be a rotorcraft. The UAV may have a maximum dimension of no more than 100 cm. The UAV may include a recessed region into which a first battery is inserted to couple to the UAV and provide power to the UAV. A second battery may be configured to be inserted into the recessed region to couple to the UAV and provide power to the UAV. The battery charging unit of the energy provision station may be configured to charge the first battery while the first battery is inserted in the recessed region. The second battery may have the same form factor as the first battery.

The landing area of the energy provision station may comprise visible markers configured to aid the UAV in landing.

4

The visible markers may comprise images. The images may aid a UAV in landing when a UAV recognizes a particular image indicative that the UAV is to land. The visible markers may comprise LED lights. The LED lights may flash in a particular spatial or temporal pattern that a UAV may recognize as a particular spatial or temporal pattern that is indicative that the UAV is to land.

The movable battery storage unit may include a carousel configuration that permits the rotational movement about the axis passing through the center of the carousel. The axis of rotation may have a horizontal orientation.

The movable battery storage unit may include a carousel configuration for the plurality of holding stations. The holding stations may rotate about the axis passing through the center of the carousel. The movable battery storage unit may comprise at least four holding stations. The movable battery storage unit may include a battery charging unit capable of charging at least one battery in a holding station. The movable battery storage unit may be located beneath the UAV landing area. The movable battery storage unit may include a battery charging unit capable of charging at least one battery in a holding station.

In some instances the battery replacement member may be a mechanical elevator. The mechanical elevator may also be configured to decouple the first battery from the UAV. The mechanical elevator may include a robot arm clamp that may grasp the first battery to decouple the first battery from the UAV. The mechanical elevator may effect horizontal movement to decouple the first battery from the UAV. The mechanical elevator may effect vertical movement to transport the first battery to the movable battery storage unit. The mechanical elevator may effect vertical movement of the second battery from the movable battery storage unit to the UAV. The mechanical elevator may effect horizontal movement of the second battery to be coupled to the UAV.

In some cases the UAV battery changing station may be portable.

A method of changing a battery on board a UAV may further comprise removing the first battery from the UAV using the battery replacement member. The method may further comprise moving the first battery to a holding station of the movable battery storage unit.

A method for changing a battery of a UAV, said method comprising: supporting a UAV on a UAV landing area of a station, wherein said UAV is coupled to a first battery configured to power the UAV; removing the first battery from the UAV with aid of a battery replacement member; and moving, within a battery storage section, a holding station configured to store a second battery capable of powering the UAV upon being coupled to the UAV, wherein the holding station is moved simultaneously while the first battery is being removed with aid of the battery replacement member.

In some instance the holding station may be moved about an axis of rotation. The first battery may be removed via a translational motion without rotation.

In an embodiment of the invention the UAV is a rotorcraft capable of landing on the UAV energy provision station vertically and taking off from the UAV energy provision station vertically. The UAV may have a maximum dimension of no more than 100 cm. The UAV may include a recessed region into which a first battery is inserted to couple to the UAV and provide power to the UAV. A second battery may be configured to be inserted into the recessed region to couple to the UAV and provide power to the UAV. The battery charging unit of the energy provision station may be configured to charge

the first battery while the first battery is inserted in the recessed region. The second battery may have the same form factor as the first battery.

The landing area of the energy provision station may comprise visible markers configured to aid the UAV in landing. The visible markers may comprise images. The images may aid a UAV in landing when a UAV recognizes a particular image indicative that the UAV is to land. The visible markers may comprise LED lights. The LED lights may flash in a particular spatial or temporal pattern that a UAV may recognize as a particular spatial or temporal pattern that is indicative that the UAV is to land.

The method may further comprise placing the first battery within a holding station of the battery storage section with aid of the battery replacement member. The method may include removing the second battery from the holding station of the battery storage section with aid of the battery replacement member.

In another embodiment the invention the battery changing station may be A UAV battery changing station, said station comprising: a UAV landing area configured to support a UAV when the UAV is resting on the station, said UAV coupled to a first battery configured to power the UAV, wherein the UAV landing area includes at least one passive landing guide configured to (1) accept a protruding feature of the UAV when the UAV lands in the landing area, and (2) guide the UAV to a desired landing location in the landing area by utilizing gravity; at least one of (a) battery storage unit comprising a holding station configured to store a second battery capable of powering the UAV upon being coupled to the UAV, or (b) a battery charging unit capable of charging the first battery of the UAV.

The UAV landing area may include a plurality of passive landing guides. In some cases the passive landing guide can be an inverted cone. The desired landing location may have the protruding feature of the UAV at the center of the inverted cone. The passive landing guide may remain stationary relative to the UAV landing area. The protruding feature of the UAV may be a landing extension member of the UAV designed to bear weight of the UAV when the UAV is not airborne.

In an embodiment of the invention the UAV is a rotorcraft capable of landing on the UAV energy provision station vertically and taking off from the UAV energy provision station vertically. The UAV may have a maximum dimension of no more than 100 cm. The UAV may include a recessed region into which a first battery is inserted to couple to the UAV and provide power to the UAV. A second battery may be configured to be inserted into the recessed region to couple to the UAV and provide power to the UAV. The battery charging unit of the energy provision station may be configured to charge the first battery while the first battery is inserted in the recessed region. The second battery may have the same form factor as the first battery.

The landing area of the energy provision station may comprise visible markers configured to aid the UAV in landing. The visible markers may comprise images. The images may aid a UAV in landing when a UAV recognizes a particular image indicative that the UAV is to land. The visible markers may comprise LED lights. The LED lights may flash in a particular spatial or temporal pattern that a UAV may recognize as a particular spatial or temporal pattern that is indicative that the UAV is to land.

The battery storage unit may be positioned beneath the UAV landing area. The battery charging unit may be capable of charging the first battery of the UAV while the first battery is coupled to the UAV.

A robotic arm may be provided on the UAV battery changing station, said robotic arm configured to aid the UAV in landing.

The UAV battery changing station may also include a GPS unit configured to provide location information about the station. The UAV may have a GPS unit configured to provide location information about the UAV. A processor on-board the UAV or the UAV battery changing station calculates a relative position of the UAV to the UAV battery changing station. Real time kinematic (RTK) navigation is used in the calculation.

Other objects and features of the present invention will become apparent by a review of the specification, claims, and appended figures.

INCORPORATION BY REFERENCE

All publications, patents, and patent applications mentioned in this specification are herein incorporated by reference to the same extent as if each individual publication, patent, or patent application was specifically and individually indicated to be incorporated by reference.

BRIEF DESCRIPTION OF THE DRAWINGS

The novel features of the invention are set forth with particularity in the appended claims. A better understanding of the features and advantages of the present invention will be obtained by reference to the following detailed description that sets forth illustrative embodiments, in which the principles of the invention are utilized, and the accompanying drawings of which:

FIG. 1 shows the battery charging system including a UAV for use in the system and an energy provision station.

FIG. 2 shows a detailed example of an energy provision station.

FIG. 3 shows a UAV with a recessed region for housing of at least one battery.

FIG. 4 shows a flow chart describing the processes of exchanging a battery on a UAV with an energy provision station.

FIG. 5 shows the components of an energy provision station.

FIG. 6 shows an example of a landing guide on the landing area of an energy provision station.

FIG. 7 shows a detailed view of a UAV mating with a landing guide.

FIG. 8 shows the self-correction of a UAV landing on a landing guide.

FIG. 9 shows an example of a battery storage carousel.

FIG. 10 shows an example of a battery storage container.

FIG. 11 shows an example of a battery storage carousel located below the landing area.

FIG. 12 shows the components of a possible mechanism to swap the battery on a UAV.

FIG. 13 shows an embodiment of a robotic arm clamp for swapping a UAV battery.

FIG. 14 shows a detailed example of a mechanism for swapping a UAV battery.

FIG. 15 shows an example of a complete energy provision station.

FIG. 16 shows a UAV with an on-board battery connected to a charge of an energy provision station.

FIG. 17 provides a flow chart of a possible communication between a UAV and a energy provision station.

FIG. 18 illustrates an unmanned aerial vehicle, in accordance with an embodiment of the invention.

FIG. 19 illustrates a movable object including a carrier and a payload, in accordance with an embodiment of the invention.

FIG. 20 is a schematic illustration by way of block diagram of a system for controlling a movable object, in accordance with an embodiment of the invention.

FIG. 21 illustrates a procedure that may be followed by a UAV and an energy provision station in accordance with an embodiment of the invention.

DETAILED DESCRIPTION OF THE INVENTION

The systems, devices, and methods of the present invention provide interaction between an energy provision station and an unmanned aerial vehicle (UAV). Description of the UAV may be applied to any other type of unmanned vehicle, or any other type of movable object. Description of the vehicle may apply to land-bound, underground, underwater, water surface, aerial, or space-based vehicles. The interaction between the energy provision station and the UAV may include docking between the energy provision station and the UAV. Communications may occur between the UAV and the energy provision station while the UAV is separated from the energy provision station and/or while the UAV is connected to the energy provision station. The UAV may be powered by a rechargeable battery which may be recharged while onboard the UAV or removed from the UAV prior to recharging. The energy provision station may exchange the battery onboard the UAV for another battery. The energy provision station may store batteries. The energy provision station may be movable relative to a UAV.

FIG. 1 shows an example of an unmanned aerial vehicle (UAV) that may be associated with an energy provision station. The UAV may land on or take off from the energy provision station. An energy provision system 100 may be provided in accordance with an embodiment of the invention. The energy provision system may comprise a UAV 101 and an energy provision station 102. The UAV may be adapted to identify and communicate with the energy provision station.

Any description herein of a UAV 101 may apply to any type of movable object. The description of a UAV may apply to any type of unmanned movable object (e.g., which may traverse the air, land, water, or space). The UAV may be capable of responding to commands from a remote controller. The remote controller may be not connected to the UAV, the remote controller may communicate with the UAV wirelessly from a distance. In some instances, the UAV may be capable of operating autonomously or semi-autonomously. The UAV may be capable of following a set of pre-programmed instructions. In some instances, the UAV may operate semi-autonomously by responding to one or more commands from a remote controller while otherwise operating autonomously. For instance, one or more commands from a remote controller may initiate a sequence of autonomous or semi-autonomous actions by the UAV in accordance with one or more parameters.

The UAV 101 may be an aerial vehicle. The UAV may have one or more propulsion units that may permit the UAV to move about in the air. The one or more propulsion units may enable the UAV to move about one or more, two or more, three or more, four or more, five or more, six or more degrees of freedom. In some instances, the UAV may be able to rotate about one, two, three or more axes of rotation. The axes of rotation may be orthogonal to one another. The axes of rotation may remain orthogonal to one another throughout the course of the UAV's flight. The axes of rotation may include a pitch axis, roll axis, and/or yaw axis. The UAV may be able

to move along one or more dimensions. For example, the UAV may be able to move upwards due to the lift generated by one or more rotors. In some instances, the UAV may be capable of moving along a Z axis (which may be up relative to the UAV orientation), an X axis, and/or a Y axis (which may be lateral). The UAV may be capable of moving along one, two, or three axes that may be orthogonal to one another.

The UAV 101 may be a rotorcraft. In some instances, the UAV may be a multi-rotor craft that may include a plurality of rotors. The plurality of rotors may be capable of rotating to generate lift for the UAV. The rotors may be propulsion units that may enable the UAV to move about freely through the air. The rotors may rotate at the same rate and/or may generate the same amount of lift or thrust. The rotors may optionally rotate at varying rates, which may generate different amounts of lift or thrust and/or permit the UAV to rotate. In some instances, one, two, three, four, five, six, seven, eight, nine, ten, or more rotors may be provided on a UAV. The rotors may be arranged so that their axes of rotation are parallel to one another. In some instances, the rotors may have axes of rotation that are at any angle relative to one another, which may affect the motion of the UAV.

FIG. 2 shows a detailed view of a possible embodiment of an energy provision system comprising the UAV 201 and the energy provision station 202. The UAV 201 shown in FIG. 2 is an example of a UAV that can be part of the energy provision system. The UAV shown may have a plurality of rotors 203. The rotors 203 may connect to the body of the UAV 204 which may comprise a control unit, inertial measuring unit (IMU), processor, battery, power source, and/or other sensors. The rotors may be connected to the body via one or more arms or extensions that may branch from a central portion of the body. For example, one or more arms may extend radially from a central body of the UAV, and may have rotors at or near the ends of the arms.

The UAV may be situated on a surface of the energy provision station by a landing stand 205. The landing stand may be configured to support the weight of the UAV when the UAV is not airborne. The landing stand may include one or more extension members that may extend from the UAV. The extension members of the landing stand may extend from one or more arms of the UAV, or from a central body of the UAV. The extension members of the landing stand may extend from beneath one or more rotors, or near one or more rotors. The extension members may extend substantially vertically.

The energy provision station 202 may be a battery station. The energy provision station may be a ground station. The energy provision station may be a battery changing station or battery exchange station. The energy provision station may be a battery recharging station. The energy provision station may be portable. The energy provision station may be capable of being carried by a human. The energy provision station may be capable of being lifted by a human in one or two hands. The energy provision station may be reconfigurable or folded in on itself to become more portable.

The energy provision station 202 may have a landing area for a UAV 206. Any surface of the energy provision station may be adapted to comprise the landing area. For example, a top surface of the energy provision station may form a landing area. Optionally, one or more platforms may be provided as a landing area for the UAV. The platforms may or may not include any sides, ceilings, or covers.

The energy provision station 202 may further comprise a battery storage system. The battery storage system may be configured to store one or more batteries. The battery storage system may charge the one or more stored batteries. In the example shown in FIG. 2 the battery storage system 207 is

shown below the landing area **206**. Another component of an energy provision station may be a mechanism configured to remove a battery from a UAV and to replace the removed battery with a fully or partially charged battery from the battery storage system.

A vertical position and/or velocity of the UAV may be controlled by maintaining and/or adjusting output to one or more propulsion units of the UAV. For example, increasing the speed of rotation of one or more rotors of the UAV may aid in causing the UAV to increase in altitude or increase in altitude at a faster rate. Increasing the speed of rotation of the one or more rotors may increase the thrust of the rotors. Decreasing the speed of rotation of one or more rotors of the UAV may aid in causing the UAV to decrease in altitude or decrease in altitude at a faster rate. Decreasing the speed of rotation of the one or more rotors may decrease the thrust of the one or more rotors. When a UAV is taking off, such as from an energy provision station, the output may be provided to the propulsion units may be increased from its previous landed state. When the UAV is landing, such as on a vehicle, the output provided to the propulsion units may be decreased from its previous flight state. The UAV may be configured to take off and/or land on an energy provision station in a substantially vertical manner.

A lateral position and/or velocity of the UAV may be controlled by maintaining and/or adjusting output to one or more propulsion units of the UAV. The altitude of the UAV and the speed of rotation of one or more rotors of the UAV may affect the lateral movement of the UAV. For example, the UAV may be tilted in a particular direction to move in that direction, and the speed of the rotors of the UAV may affect the speed of the lateral movement and/or trajectory of movement. Lateral position and/or velocity of the UAV may be controlled by varying or maintaining the speed of rotation of one or more rotors of the UAV.

The UAV **101** may be of small dimensions. The UAV may be capable of being lifted and/or carried by a human. The UAV may be capable of being carried by a human in one hand. The energy provision station may have a landing area configured to provide a space for the UAV to land. The UAV dimensions may optionally not exceed the width of the energy provision station landing area. The UAV dimensions may optionally not exceed the length of the energy provision station landing area.

The UAV **101** may have a greatest dimension (e.g., length, width, height, diagonal, diameter) of no more than 100 cm. In some instances, the greatest dimension may be less than or equal to 1 mm, 5 mm, 1 cm, 3 cm, 5 cm, 10 cm, 12 cm, 15 cm, 20 cm, 25 cm, 30 cm, 35 cm, 40 cm, 45 cm, 50 cm, 55 cm, 60 cm, 65 cm, 70 cm, 75 cm, 80 cm, 85 cm, 90 cm, 95 cm, 100 cm, 110 cm, 120 cm, 130 cm, 140 cm, 150 cm, 160 cm, 170 cm, 180 cm, 190 cm, 200 cm, 220 cm, 250 cm, or 300 cm. Optionally, the greatest dimension of the UAV may be greater than or equal to any of the values described herein. The UAV may have a greatest dimension falling within a range between any two of the values described herein.

The UAV **101** may be lightweight. For example, the UAV may weigh less than or equal to 1 mg, 5 mg, 10 mg, 50 mg, 100 mg, 500 mg, 1 g, 2 g, 3 g, 5 g, 7 g, 10 g, 12 g, 15 g, 20 g, 25 g, 30 g, 35 g, 40 g, 45 g, 50 g, 60 g, 70 g, 80 g, 90 g, 100 g, 120 g, 150 g, 200 g, 250 g, 300 g, 350 g, 400 g, 450 g, 500 g, 600 g, 700 g, 800 g, 900 g, 1 kg, 1.1 kg, 1.2 kg, 1.3 kg, 1.4 kg, 1.5 kg, 1.7 kg, 2 kg, 2.2 kg, 2.5 kg, 3 kg, 3.5 kg, 4 kg, 4.5 kg, 5 kg, 5.5 kg, 6 kg, 6.5 kg, 7 kg, 7.5 kg, 8 kg, 8.5 kg, 9 kg, 9.5 kg, 10 kg, 11 kg, 12 kg, 13 kg, 14 kg, 15 kg, 17 kg, or 20 kg. The UAV may have a weight greater than or equal to any

of the values described herein. The UAV may have a weight falling within a range between any two of the values described herein.

One or more components of the UAV may be powered by a battery. For example the entire UAV may be powered by a battery or only a propulsion unit, controller, communication unit, Inertial Measure Unit (IMU), and/or other sensors may be powered by a battery. Battery can refer to a single battery or a pack of two or more batteries. An example of a battery may include a lithium ion battery, alkaline battery, nickel cadmium battery, lead acid battery, or nickel metal hydride battery. The battery may be a disposable or a rechargeable battery. The life time of the battery (i.e. amount of time it will provide power to the UAV before needing a recharge) may vary; the life time may be at least 1 min, 5 min, 10 min, 15 min, 30 min, 45 min, 1 hr, 2 hrs, 3 hrs, 4 hrs, 5 hrs, or 10 hrs. The battery life may have a duration greater than or equal to any of the values described herein. The battery life may have a duration falling within a range between any two of the values described herein.

A battery may be coupled to the UAV to provide power to the UAV by an electrical connection. Any description herein of a battery may apply to one or more batteries. Any description of a battery may apply to a battery pack, and vice versa, where a battery pack may include one or more batteries. Batteries may be connected in series, in parallel, or any combination thereof. An electrical connection between a UAV and a battery or a component of a UAV and a battery may be provided. An electrical contact of a battery may contact an electrical contact of the UAV. The UAV may have recessed region on its body to house the battery. FIG. 3 shows an example of a UAV **301** with a recessed region **302** configured to house a battery **303** in the body of the UAV **304**. The recessed region may have equal or non-equal length, width and depth. Possible values for the length, width, and depth of the recessed region may be at least 1 mm, 5 mm, 1 cm, 3 cm, 5 cm, 10 cm, 12 cm, 15 cm, 20 cm, 25 cm, 30 cm, 35 cm, 40 cm, 45 cm, 50 cm, 55 cm, 60 cm, 65 cm, 70 cm, 75 cm, 80 cm, 85 cm, 90 cm, 95 cm, or 100 cm. The recessed region may be configured to hold one or more batteries. The recessed region may contain electrical contacts to connect the battery to the UAV power system. Additionally the recessed region may comprise electrical connections to communicate with a sensor which may dynamically read and record the remaining charge on the battery. The recessed region may include one or more electrical contacts that may be in electrical contact with the battery onboard the UAV. The electrical contacts may be coupled to the battery while it is inside of the recessed region, if the battery is removed the contact may be disconnected from the battery.

The method of swapping of a battery on a UAV by an energy provision station may include the steps of landing the UAV at the energy provision station, removing an on-board battery from the UAV using a component of the energy provision station, exchanging the on-board battery for another battery provided at the energy provision station, coupling the other battery to the UAV, and causing the UAV to take off from the energy provision station. All or any one of these steps may be fully or partially automated.

An example of a method of battery exchange is shown in the flow chart in FIG. 4. The steps described in FIG. 4 may occur in the order shown, or the steps may occur out of order. The method of battery exchange may include all of the steps listed or a subset of the steps listed. Initially the UAV may land on a landing area on the energy provision station **401**. After the UAV lands, the depleted battery may be removed by a mechanism on the energy provision station. The energy

provision station may employ a robotic arm to remove the depleted battery from the UAV **402**. Upon being removed, the depleted battery may be stored in a battery storage unit. The battery storage unit may comprise a container for the battery, the container may include electrical connections configured to provide charge to the battery. An example of a battery storage area may be a carousel on board the energy provision station **403**. The carousel may be configured such that it may rotate to carry away the depleted battery and place a charged battery in line with a mechanism configured to install the charged battery on the UAV. In some examples, such a mechanism may be a robotic arm **404**. The robot arm that transports the charged battery to the UAV may be the same robotic arm that removes the depleted battery from the UAV. After rotation of the carousel, the robotic arm may install the charged battery in the UAV **405**. The final step may be for the UAV to take off from the landing area with a fully charged battery on board **406**.

The UAV may communicate with an energy provision station. For example, the UAV may transmit information to the energy provision station regarding the state of the battery on board the UAV, the current flight conditions, time or distance remaining on current mission, distance to the next energy provision station, battery specifications, state of battery charge (e.g. remaining power estimate), battery temperature, UAV specifications, or flight plan (e.g. estimated arrival at the next energy provision station and/or estimated time of arrival at final destination). The UAV may also communicate information to the energy provision station describing the state of the UAV. For example the UAV may communicate information describing system failures or descriptions of damaged parts (e.g. broken propeller) to the energy provision station. The UAV may carry a payload. The UAV may communicate the weight of the payload. Additionally the UAV may communicate to the energy provision station when in the flight plan the UAV plans to load or unload the payload.

In response to information from the UAV or independent of communication from the UAV the energy provision station may communicate information to the UAV. The energy provision station may inform the UAV as to whether or not it is available to provide the UAV with a charged battery. For example, the energy provision station may be depleted of charged batteries or the energy provision station may be occupied by another UAV, in these instances the energy provision station may instruct the UAV to continue on to the next closest energy provision station. In another case the energy provision station may instruct the UAV to continue to the next closest energy provision station in the case of adverse weather conditions (e.g. wind, rain, snow) or a mechanical or electrical failure on the energy provision station. The energy provision station may transmit updated route instruction to the UAV to direct the UAV to the next energy provision station. Alternatively, when the energy provision station is available for charging, the energy provision station may instruct the UAV to land on the station.

In the case of low battery charge, the UAV may be directed to land at the energy provision station. An instruction to land on the energy provision may be transmitted by the energy provision station. If the charge of the battery is too low to permit the UAV to meet the UAV's time or distance remaining on the UAV's current mission, or the UAV flight plan, the UAV may be directed to land at the energy provision station. UAV operating parameters, such as expected rate of energy consumption, or current rate of energy consumption, may be taken into account. For example, a UAV may be flying in a relatively low power mode where one or more of the sensors are not in operation, but it may be anticipated that the UAV

may employ more of the sensors later in flight. The anticipated increased rate of energy consumption may affect the anticipated rate of battery charge depletion, which may be taken into account when determining whether the UAV needs to land at the energy provision station. Optionally, the UAV may be directed to land at the energy provision station if the state of charge of the battery falls beneath a predetermined threshold. Additionally the UAV may be instructed to land on the energy provision station if a mechanical or electrically system on board the UAV is in need of repair (e.g. broken propeller, short in electrical component).

Landing on an energy provision station may be predetermined by a UAV's flight plan. For example a UAV instructed to travel from point A to point B may have a planned stop at an energy provision station halfway between point A and point B. The decision to land at an energy provision station as part of the flight plan may be contingent on the energy provision station being unoccupied. For example, energy provision station halfway between point A and point B is occupied by another UAV the UAV may alter its flight plan to continue on to the next energy provision station as long as the power remaining on the battery is sufficient to reach the next energy provision station.

When more than one UAV identifies an energy provision station with the intent of landing on the energy provision station the UAVs may be entered into a queue. The UAVs in the queue may wait for access to the energy provision station. The UAVs in the queue may be ordered such that UAVs in urgent need of aid from the energy provision station (e.g. those with mechanical failures and/or critically low batteries) may be attended to before UAVs in less need of aid from the energy provision station. The UAVs in the queue may be ranked by layers or they may be ranked based on a system of weighing various factors. In the case of ranking by layers, the primary layer may be the mechanical or electrical status of the UAV, the secondary layer may be the energy remaining on the UAV's battery, and the tertiary layer may be how long the UAV has been waiting for aid from the energy provision station. The layers may be used to rank the UAVs in the queue. Alternatively, in the weighting system factors such as the mechanical or electrical status of components of the UAV, the power storage remaining on the battery of the UAV, and how long the UAV has been waiting in the queue may be considered. A weighted average (e.g. a score) of the aforementioned factors may be used to determine a UAVs location in the queue.

An interaction between a UAV and an energy provision station may follow the procedure outline in FIG. **21**. The interaction may include all the steps shown in FIG. **21** or a subset of these steps, the steps may occur in the order shown or in an alternate order. First the UAV may detect the energy provision station **2101**. The detection of the energy provision station by the UAV may be in response to a known GPS signal indicating the location of the energy provision station, a visual detection, or an audio detection. The UAV may exchange information with the energy provision station **2102**, for example the UAV may communicate information regarding the state of the UAV and/or the battery. The energy provision station may provide the UAV with information regarding the state of the energy provision station. Based on the information exchange the UAV may determine if it should land on the energy provision station or continue on its flight path **2103**. If the UAV decides to land on the energy provision station it may enter a queue of UAVs waiting to land on the energy provision station **2104**. When the UAV is the first UAV

in the queue and the energy provision station is unoccupied by another UAV the UAV may land on the energy provision station 2105.

The UAV may identify an energy provision station landing area by sensing a marking, for example a marking may be a raised pattern, a recessed pattern, an image, a symbol, a decal, a 1-D, 2-D, or 3-D barcode, a QR code, or lights visible on the energy provision station landing area. The marking may indicate that the energy provision station has charged batteries available. For example the marking may be a light or pattern of lights, the lights may be turned on only when the energy provision station has charged batteries available.

The UAV may take off and land on the energy provision station landing area vertically. The landing area may comprise recessed mating features to guide the UAV during landing. The mating features may decrease the need for accuracy when landing the UAV on the landing area. The recessed features may be configured to mate with a wide variety of UAVs, alternatively the mating features may be specific to a single UAV manufacturer, single UAV fleet, or one particular UAV.

Communication between the UAV and the energy provision station may be used to get the UAV to the general location of the energy provision station. Communication between the UAV and the energy provision station may occur wirelessly. The UAV may employ GPS or other locating software to locate the energy provision station. The GPS or other location techniques can be used to get the UAV to the vicinity of the energy provision station. The wireless communications may get the UAV within range to sense one or more portions of the energy provision stations. For instance, the UAV may be brought into a line-of-sight of the energy provision station. The landing area marker or markers may aid in further pinpointing the location of the energy provision station. The marker may serve as a confirmation of the energy provision station on which the UAV may land. The markers may also differentiate the energy provision station or a landing area of an energy provision station from other objects or regions.

The marker may be useful for indicating a landing position of the UAV on the energy provision station. The marker may be used as a fiducial marker, which may aid the UAV in navigating to a proper landing position on the energy provision station. In some examples, multiple markers may be provided which may aid the UAV in landing in a desired position. In some instances, it may also be desirable for a UAV to have a particular orientation when docking with the energy provision station. In one example, the marker may include an asymmetric image or code that may be discernible by the UAV. The fiducial may be indicative of the orientation of the energy provision station relative to the UAV. Thus, the UAV may be able to orient itself properly when landing on the energy provision station. The marker may also be indicative of the distance of the energy provision station relative to the UAV. This may be used separate from or in combination with one or more other sensors of the UAV to determine the altitude of the UAV. For example, if the size of the fiducial marker is known, the distance from the UAV to the marker may be gauged depending on the size of the marker showing up in the sensors of the UAV.

In one example, the marker may be provided at a particular location relative to a desired landing spot of the UAV on the energy provision station. This may be at a particular location relative to a desired landing spot on a landing area of an energy provision station. The UAV may be capable of landing on the landing area with great precision. The marker may help guide the UAV to the exact desired spot. For instance, the marker may be located 10 cm in front of the center of the

desired landing point of the UAV. The UAV may use the marker to guide the UAV to the exact landing spot. In some examples, multiple markers may be provided. The desired landing spot may fall between the multiple markers. The UAV may use the markers to help orient the UAV and/or position its landing between the markers. Distance between the markers may aid the UAV in gauging the distance of the UAV to the landing area.

The marker may be provided anywhere on the energy provision station or landing area. The marker may be placed in a location such that it is easily discernable from above. In some instances, the marker may be provided on an exterior surface of the energy provision station. The marker may include a wireless signal being emitted by an energy provision station. The origin of the signal may be from outside the energy provision station or inside the energy provision station. Alternatively the energy provision station may emit IR and/or UV light, radio, or audio signals.

The marker may be positioned near where the UAV may dock with the energy provision station. In one example, the marker may be positioned less than about 100 cm, 80 cm, 75 cm, 70 cm, 65 cm, 60 cm, 55 cm, 50 cm, 45 cm, 40 cm, 35 cm, 30 cm, 25 cm, 20 cm, 15 cm, 12 cm, 10 cm, 8 cm, 7 cm, 6 cm, 5 cm, 4 cm, 3 cm, 2 cm, or 1 cm from where the UAV lands on the energy provision station.

Data pertaining to the detected marker may be provided to one or more processors. The processors may be on board the UAV. Based on the detected information about the detected marker, the processors may, individually or collectively, generate a command signal. The command signal may drive the propulsion units of the UAV. For example, the propulsion units may be driven to cause the UAV to land on the energy provision station with the detected marker, when the detected marker is determined to belong to the energy provision station. The detected marker may indicate the state of charge of the stored batteries at the energy provision station. For example if the energy provision station has a fully charged battery available the detected marker may result in a command from the processor to land the UAV. In another example if the energy provision station does not have a charged battery available the detected marker may result in a command from the processor to continue traveling to the next energy provision station. Thus, a UAV may be able to land in an autonomous or semi-autonomous fashion in response to a detected marker. The UAV may be capable of landing without receiving any commands or manual input from a user.

In some embodiments, sensors on board the UAV may be used to detect the marker, and processing may occur on-board the UAV. The UAV may be capable of landing itself on the energy provision station without requiring further guidance or information from the energy provision station once the UAV has confirmed that the marker belongs to the energy provision station.

An energy provision station may include a marker, and one or more coupling connection components. The energy provision station may send information about its location to a UAV. The energy provision station may have a location unit capable of determining positional information. An energy provision station may receive information from the UAV about the location of the UAV and the state of the battery on board the UAV. For example, coordinate information, such as GPS coordinates, for the UAV may be provided to the energy provision station. In another example the UAV may communicate the remaining charge percentage of the battery currently in use on the UAV. The energy provision station may have a communication unit capable of communicating with the UAV. The energy provision station may have a processor

15

capable of identifying and/or calculating a location of the UAV. Furthermore, the energy provision station may have a processor capable of identifying and/or calculating a location of the next nearest battery exchange station. For example a UAV may communicate to an energy provision station that the battery currently on board the UAV has a remaining charge percentage of 18%, the processor at the energy provision station may determine the distance to the next battery exchange station in the UAV's flight path to determine if the UAV should stop for recharging or continue to the next energy provision station.

FIG. 5 shows a possible embodiment of an energy provision station. The energy provision station may have three basic components: a battery replacement member 501, a UAV landing area 502, and a battery storage unit 503. The battery replacement member may be a mechanical arm 501 that may be configured to remove a battery from a UAV and/or to place a charged battery in the UAV. In some instances, the mechanical arm may both remove the battery from the UAV and place a charged battery in the UAV. Alternatively, different mechanical components may be used to remove the battery from the UAV and to place a charged battery in the UAV. The mechanical arm may have at least 1, 2, 3, 4, 5, or 6 degrees of freedom. The mechanical arm may move autonomously or semi autonomously.

The UAV landing 502 area may comprise markers that may be uniquely recognized by an approaching UAV. The landing area may comprise a passive landing guide 504. The passive landing guides may be configured to interact with a component of a UAV as it lands to guide the UAV to a final resting position. The UAV may include a landing stand that may fit into a passive landing guide and be guided to the final resting position. The UAV may include a surface upon which the UAV may land. The UAV may rest on the surface, or all or a majority of the weight of the UAV may be borne by the passive landing guides.

The battery storage unit 503 may store a plurality of batteries. The battery storage unit may simultaneously store and charge the stored batteries. The battery storage unit may move the batteries relative to each other. The battery storage unit may move the batteries relative to the UAV landing area and/or a UAV on the landing area. Multiple batteries may be moved simultaneously using the battery storage unit. When a UAV lands on the energy provision station, a fully charged battery may be in a location such that the mechanical arm 501 may install the battery on the UAV. For instance, a mechanical arm may bring a depleted battery from a UAV to a particular location relative to the battery storage unit. The battery storage unit may accept the depleted battery. The battery storage unit may cause movement of the batteries so that a different battery (e.g., fully charged battery) is moved to the location where the depleted battery was accepted. The mechanical arm may receive the different battery. In some instances, the movement may include rotation of the battery storage unit about an axis.

The UAV landing area of the energy provision station may be configured to comprise a passive landing guide. The UAV may have at least one protruding feature which may mate with a corresponding cavity on the landing area of the energy provision station. For example the UAV may have four round conical stoppers which may fit inside of four round conical indentations on the landing area. The protruding feature may be a launch stand configured to bear a weight of the UAV. FIG. 6 shows an example of a UAV 601 landing on an energy provision station 602 such that the conical stoppers 603 mate with the conical indentations 604 on the landing area. In an alternative embodiment, the stopper and the indentation may

16

comprise a variety of other mating shapes. The stopper may be made from rubber, plastic, metal, wood, or composite. The stopper may have a height and width of less than or equal to 1 mm, 5 mm, 1 cm, 3 cm, 5 cm, 10 cm, 12 cm, 15 cm, 20 cm, 25 cm, 30 cm, 35 cm, 40 cm, 45 cm, 50 cm, 55 cm, 60 cm, 65 cm, 70 cm, 75 cm, 80 cm, 85 cm, 90 cm, 95 cm, or 100 cm. The indentations may have corresponding dimensions such that they are adapted to fit the stopper.

In another example the UAV may comprise a protrusion that does not identically mate with an indentation on the landing area. In this example, the UAV may have a feature protruding from the bottom of the UAV designed such that it is smaller than the indentation on the landing area. The protruding feature on the bottom of the UAV may fit into the indentation. In a specific example of this configuration, the UAV may have a protruding rod and the landing area may have a conical indentation. Upon landing, the protruding rod may be funneled into the bottom of the conical indentation. For instance, if a protruding rod hits a side of the indentation, gravity may cause the protruding rod to slide to the bottom of the indentation. FIG. 7 shows a detailed side (left) and top (right) view of a possible embodiment of the landing area 701 with a docked UAV 702 showing a protruding rod fitting inside of a conical indentation 703. Optionally, the protruding rod may be a landing stand of the UAV. The protruding rods may bear the weight of the UAV while the UAV is resting on the landing area. The indentations may bear the weight of the protruding rods and/or the UAV while the UAV is resting on the landing area.

The passive landing guide may reduce the need for high precision control of the UAV landing procedure. The passive landing guide may be configured such that the UAV may be corrected if it approaches the station in such a way that it is off set from the desired landing location. The passive landing guide may bring the UAV into the desired location with the aid of gravity. FIG. 8 shows an example of how the passive landing guide may correct the UAV if it approaches the landing location with an off set. In the example shown in FIG. 8 the UAV approaches the landing guide off set to the right (1). The UAV partially mates with the passive landing guide, after contact with the landing guide the UAV may slide downward into the correct location (2). This process of correcting the UAV to the correct landing location may rely on gravity and may not introduce a need for a moving part or additional mechanism.

Alternatively the UAV may locate the energy provision station using real time kinematics (RTK). RTK location methods may require both the UAV and the energy provision station to emit a satellite signal, for example a GPS signal. RTK may allow the UAV to locate the correct docking location on the energy provision station with accuracy within 10 cm, 9 cm, 8 cm, 7 cm, 6 cm, 5 cm, 4 cm, 3 cm, 2 cm, 1 cm, or less than 1 cm.

The energy provision station may comprise a battery storage system. The battery storage system may be a carousel. The batteries in the battery storage system may be fully charged, partially charged, or depleted of charge. The batteries may be connected to a source of electrical power to restore them from a depleted or partially charged state to a state of full charge. The batteries may be identical in size, shape, and battery type (e.g. lithium ion, nickel cadmium). Alternatively, different battery sizes, shapes or types may be accommodated. The battery storage system may be configured to store at least 2, 3, 4, 5, 6, 7, 8, 9, 10, 15, 20, 25, 30, 35, 40, 45, or 50 batteries. In some embodiments, the battery system may store less than any of the number of batteries described. The battery

17

system may store a number of batteries falling within a range between any two of the values described.

The battery storage system may comprise individual ports for each battery. The ports may be movable relative to each other. Multiple ports may move simultaneously. The ports may rotate about an axis clockwise, counterclockwise, or in both rotational directions. The axis of rotation may be horizontally oriented (e.g., parallel to an underlying surface or ground, perpendicular to the direction of gravity), or vertically oriented (e.g., perpendicular to an underlying surface or ground, parallel to the direction of gravity). The ports may translate in any direction. Optionally, they may translate and rotate simultaneously. The ports may have electrical connections which may connect to the processor to meter the charge available on the battery or they may connect to an electricity source to charge the battery. The electricity source may be on board or off board the energy provision station. For example the electricity source may be an electric generator, a rechargeable battery, a disposable battery, or a connection to a distributed power line. Alternatively the ports may charge the batteries inductively (wirelessly). Multiple charging interfaces may be accommodated by the energy provision station such that the station can charge a variety of battery types and voltages. The energy provision station may be permanently installed or it may be temporary. In the case of a temporary energy provision station, the station may be configured to be portable and may be carried away by a user.

The stored batteries may move relative to each other. In one example the batteries may move relative to each other in a carousel. FIG. 9 shows an example of a possible battery carousel 901 for use in the battery storage system. The carousel shown in FIG. 9 can hold 8 batteries 902. Alternatively a carousel may be chosen such that it can hold at least 4, 5, 6, 7, 8, 9, 10, 15, 20, 25, 30, 35, 40, 45, or 50 batteries. The carousel may be configured to hold fewer batteries than values described herein or the carousel may be configured to hold a number of batteries within a range between any two of the values described herein. The batteries in the carousel may be identical in size, shape, voltage, and composition. Each battery may be stored in a compartment 903. The battery may slide in and out of the compartment during installation and removal from a UAV. For instance, the battery may slide and out laterally via a side opening of the compartment. The battery may be able to lock into the compartment during storage. A battery may be charged on board the UAV or a battery may be charged in the storage compartment in the battery storage system. The battery storage compartment may be configured to provide electrical charge to the battery through electrical contacts. FIG. 10 shows an example of a possible battery storage compartment 1001 with electrical contacts configured 1002 to provide charge to a battery. The electrical contacts may be connected to a power source 1003 off board the battery. The battery may be simultaneously connected to a meter to determine when the battery charge is complete. The container may provide only enough electrical power to charge or partially charge the stored battery. The battery storage compartment may be part of a carousel or other battery storage unit. The battery storage compartment may be movable relative to other portions of an energy provision station.

The battery carousel 901 may rotate about a shaft 904. The carousel may rotate counter-clockwise or clockwise. The carousel may be able to rotate in either both directions or only one direction. The rotation may be driven by an actuator, such as a motor. The actuator may receive a command signal from a controller on-board or off-board the energy provision station that controls movement of the battery storage system.

18

The carousel may be configured perpendicular to the base of the energy provision station 905. For instance, the length of the shaft may be parallel to the base of the energy provision station. Alternatively the carousel may be oriented parallel to the base of the base of the energy provision station or at any other angle relative to the base of the energy provision station. FIG. 11 shows a possible embodiment of the complete energy provision station. FIG. 11 shows that the landing area 1101 may be placed on top of the carousel 1102. The battery carousel may be partially or completely enclosed by a housing.

The battery storage system may be driven by an actuator to rotate. The battery storage system may include a steering lock, so that the battery storage can be locked when needed to prevent it from rotating and fix it at the desired position. The steering lock may be located at the bottom of the carousel, the top, or along the sides.

The energy provision station may comprise a mechanism configured to move the batteries. The mechanism may be an automated battery replacement member. The mechanism may be a robotic arm, actuator, or a pulley. The mechanism may be a mechanical elevator. In one embodiment, the mechanism configured to move the batteries may be a robotic arm. The robotic arm may have at least 2 degrees of freedom. For example a robotic arm having 2 degrees of freedom may be able to move (1) horizontally and (2) vertically. The up and down motion may be achieved by a linear actuator, or any other type of actuator. The horizontal motion may be achieved by a rack and pinion mechanism driven by an actuator. The horizontal motion may be a linear motion. The horizontal actuator may be installed on a vertical motion actuator such that the robotic arm may vertically and then horizontally. Optionally, the robotic arm may permit a battery to move vertically and/or horizontally without causing any rotation of the battery. The battery may be translated without being rotated by the robotic arm. In alternative embodiments, the robotic arm may permit rotation or change in orientation of the battery.

The mechanism configured to move the batteries may comprise an end member adapted to attach to the battery to be removed from the UAV. For example the end member may be a magnet, a hook, or a suction device. In a preferred embodiment the end member may be a clamp. The clamp may be installed on the forward and back module such that the robotic arm may move forward or back and then clamp or release a battery. The clamping motion may be driven by a steering gear and linkage system. The clamp may attach to the battery by compressing the battery between two sides of the clamp with sufficient pressure to hold the battery, alternatively the battery and the clamp may comprise complimentary mating features. An example of a complimentary mating feature may be a peg and a hole. Similar mating features may be used to hold the batteries in the battery storage unit.

FIG. 12 shows a schematic of a possible robotic arm. The robotic arm may be raised from the base of the energy provision station by a post 1201. The robotic arm may be configured to move up and down along the post. The robotic arm may move up and down autonomously or semi autonomously. The robotic arm may be attached to the post via a second rail 1202 on which it may be configured to move forward and back. The robotic arm may move forward and back autonomously or semi autonomously. The third feature of the robotic arm may be a terminal clamp 1203. The terminal clamp may have a c shaped opening which may open towards the recessed battery of a docked UAV. The terminal clamp may open and close, it may be able to attach to a battery.

FIG. 13 shows a detailed view of an embodiment of a robotic arm. The example shown in FIG. 13 depicts a clamp

1301 mounted on a rack and pinion mechanism **1302**. The clamp may be oriented horizontally, so that ends of the clamp grid onto the sides of the battery. The clamp may include a portion in the rear **1303** that may rotate, thereby causing the ends of the clamp **1304** to move closer together or further apart. The rear control portion may rotate with aid of an actuator, that may operate in response to a command signal from a controller on-board or off-board the energy provision station.

FIG. **14** provides a complete view of the robotic arm including the clamp **1401** mounted on a rack and pinion mechanism **1402**. The assembly comprising the clamp and rack and pinion supported on an actuator **1403** configured to move the assembly in a vertical up and down path. In addition to vertical motion the entire assembly may also be rotated clockwise or counterclockwise about a pivot point **1404**. The pivot point may be oriented so that the entire assembly may rotate about a vertical axis of rotation. This may permit the assembly to change orientation. In some instances, the assembly may rotate about a limited range. In some instances, the robotic arm may not rotate about an axis, it may be fixed rotationally.

In some instances the robotic arm may be employed in the landing of the UAV on the energy provision station instead of or in addition to swapping the battery on board the UAV. The UAV may approach the energy provision station, when the UAV is sufficiently close to the energy provision station the robotic arm may attach to the UAV and place the UAV in a preferred location for battery swapping on board the energy provision station. The robotic arm may detect the UAV using a sensor on the robotic arm, for example, the sensor may be a vision sensor, a motion sensor, an audio sensor, or any other sensor configured to detect a UAV in proximity to the robotic arm. The robotic arm may attach to the body of the detected UAV, the robotic arm may attach to the UAV using the terminal c shaped clamp. Alternatively the robotic arm may attach to the UAV magnetically, with Velcro, or by achieving positive mating between complimentary mating features on the UAV and the robotic arm. The UAV may turn off its rotors after being sized or grasped by the robotic arm.

The robotic arm may be specifically configured to seize the UAV from the air to place the UAV on the energy provision station. The robotic arm may telescope vertically from the energy provision station such that it may be in the proximity of a UAV approaching the energy provision station. The robotic arm may be raised at least 6 inches, 12 inches, 24 inches, 36 inches, 48 inches or 60 inches above the landing area of the energy provision station. The robotic arm may be raised above the energy provision station to detect an approaching UAV using a visual sensor. Additionally the robotic arm may rotate about an axis such that it can turn to face an incoming UAV. The robotic arm may move vertically, horizontally, and rotationally about a vertical and/or horizontal axis. Alternatively the robotic arm may be raised above the energy provision station after the GPS or RTK system on the energy provision station has detected a UAV in proximity of the energy provision station. Once the robotic arm is raised it may grasp an incoming UAV and then lower to the level of the landing area to place the UAV on the landing area of the energy provision station.

FIG. **15** shows the complete energy provision station assembly including the landing area **1501**, battery storage system **1502**, and the robotic arm **1503**. In the embodiment shown in FIG. **15** the battery storage system is below the landing area and the robotic arm is adjacent to the battery storage system and landing area such that it is adapted to access both regions of the energy provision station. The

robotic arm may move vertically between the UAV landing area and the battery storage system while performing a battery switching procedure. Optionally, a notch or opening **1504** may be provided on the UAV landing area that may permit the robotic arm and/or battery to traverse the region between the UAV landing area and the battery storage system.

The energy provision station may provide charge to the battery onboard the UAV. The energy provision station may provide charge to battery on board the UAV without removing the battery from the recessed region in the body of the UAV. Charge may be provided to the battery on board the UAV from a power source on board or off board the energy provision station. FIG. **16** shows an example of a battery **1601** on board a UAV **1602** receiving charge from an energy provision station **1603**. In the example in FIG. **16** a power source **1604**, which may be located on board or off board the energy provision station **1603**, provides power to the battery **1601** by means of an electrical pathway **1605**. The electrical pathway may include an electrical connection **1606** on the landing area **1607**. Alternatively, the electrical pathway may take any path between a battery on-board the UAV and the power source. The electrical connection **1606** may be recessed in the landing area **1607**. The electrical connection **1606** may be configured to move out of the recession and mate with a battery when instructed by a processor to provide charge to the battery on board the UAV. Alternatively, the electrical connection may be provided separately from the landing area and may or may not contact the landing area. The UAV may include an electrical contact that may connect with a corresponding electrical contact for a charging apparatus that connects the power source to the battery.

A UAV may locate an energy provision station from the air. Upon locating the energy provision station the UAV may communicate with the energy provision station to determine if the UAV should approach and land on the energy provision station to initiate a battery switching procedure. A battery life reloading procedure may initiate when a UAV docks on the landing area of an energy provision station. Reloading battery life on a UAV may include increasing the overall battery state of charge for the UAV. This may include (1) recharging the existing battery while the battery is on-board the UAV, (2) removing the existing battery from the UAV, recharging the existing battery off-board the UAV, and coupling the existing battery back with the UAV, or (3) removing the existing battery from the UAV, taking a new battery with a higher state of charge, and coupling the new battery with the UAV. The UAV docked on the landing area may communicate with a processor on board the energy provision station. Alternatively, the UAV may communicate remotely with a processor off board the energy provision station. The processor may determine the remaining charge on the battery currently in use on the UAV by communicating with a sensor in contact with the battery. The remaining charge on the battery may be sensed by a voltmeter. Based on the % of remaining charge on the battery the processor may initiate a response which may include swapping the battery for a fully charged battery from the storage system or charging the current battery. The decision to charge or swap the battery onboard the UAV may be based on a threshold percentage of remaining charge. The threshold value may be 50%, 40%, 30%, 20%, 10%, or 5% remaining charge. The threshold may be fixed, or it may be variable as a function of battery age, battery type, flight conditions, ambient temperature, or distance to the next energy provision station. After determining an optimal response the battery swap or charge may take place at the energy provision

station. When the battery swap or charge has completed the processor may indicate that the UAV may take off from the landing area.

FIG. 17 shows a flow chart outlining a decision process carried out by one or more processors, individually or collectively, when a UAV approaches a landing area. As the UAV detects an energy provision station in its vicinity it may communicate with energy provision station. The UAV may communicate variables such as flight time, flight distance, time since last charge, or distance remaining on mission to the energy provision station 1701. Based on this information, the processors, which may be on-board or off-board the energy provision station, may instruct the UAV to land on the energy provision station for further assessment 1702. Once the UAV has docked on the landing area the energy provision station may measure the remaining charge on the battery 1703. If the charge is above a pre-determined threshold the energy provision station may provide a charge to the battery currently on board the UAV 1704. If the battery is below a threshold charge percentage the energy provision station may initiate a battery switching procedure 1705 to replace the battery on board the UAV with a fully or partially charged battery from the battery storage system.

Instruction to swap or charge the battery on board the UAV may be based entirely on the remaining charge on the battery relative to a pre-determined threshold value or the instructions may be based on one or more other factors. For example the current charge on the batteries in the battery storage system may influence the instructions. For example, the number of available batteries in the battery storage may influence the instructions. If no batteries are available, then the battery may be charged on-board, regardless of state of charge. If only a single battery is available, the state of charge of the on-board battery may be compared with the single battery provided by the battery storage system. The battery storage battery charge may affect the instruction to swap or charge the battery such that if the energy provision station has only partially charged batteries in the storage system the processor may give the instruction to charge the battery on board the UAV rather than replacing the battery with a partially charged battery. In another example the time required to swap the battery may be considered in comparison to the time required to charge the battery. A decision to swap the battery or charge the battery may be chosen such that the required time is optimized. Other factors that may influence the outcome of the instruction from the processor may include the number of other UAV's detected in the vicinity by the energy provision station, the mission of the UAV landed on the energy provision station, and/or the current flight conditions (e.g. head wind, tail wind, temperature).

The battery switching procedure may employ the robotic arm mechanism. The first step in the procedure may be for the robotic arm to move vertically so that it may be in line with a recessed battery receptacle which may be the location of the battery to be removed from the UAV. Next the robotic arm may move horizontally to approach the battery to be removed from the UAV. When the robotic arm is sufficiently within the proximity of the battery to be removed from the UAV, the clamp may open and close to attach to the battery. Once the robotic arm has attached to the battery the arm may retreat horizontally from the UAV and move vertically to be in line with an empty storage receptacle in the battery storage system. The robotic arm may place the depleted battery removed from the UAV into the empty storage receptacle in the battery storage system. Next the battery storage system may rotate so that a charged or partially charged battery is in line with the robotic arm. The robotic arm may repeat the steps used to

remove the battery from the UAV in order to remove the charged or partially charged battery from the battery storage system. After the robotic arm has clamped on to a charged or partially charged battery the robotic arm may move vertically to be in line with the UAV recessed battery receptacle. The robotic arm may then move horizontally to push the charged or partially charged battery into the recessed battery onboard the UAV. When the battery is fitted in to the recessed battery receptacle the robotic arm may then release the clamp on the battery and retreat from the UAV. After the robotic arm retreats the UAV may take off vertically from the landing area and continue its mission.

The systems, devices, and methods described herein can be applied to a wide variety of movable objects. As previously mentioned, any description herein of an aerial vehicle, such as a UAV, may apply to and be used for any movable object. Any description herein of an aerial vehicle may apply specifically to UAVs. A movable object of the present invention can be configured to move within any suitable environment, such as in air (e.g., a fixed-wing aircraft, a rotary-wing aircraft, or an aircraft having neither fixed wings nor rotary wings), in water (e.g., a ship or a submarine), on ground (e.g., a motor vehicle, such as a car, truck, bus, van, motorcycle, bicycle; a movable structure or frame such as a stick, fishing pole; or a train), under the ground (e.g., a subway), in space (e.g., a spaceplane, a satellite, or a probe), or any combination of these environments. The movable object can be a vehicle, such as a vehicle described elsewhere herein. In some embodiments, the movable object can be carried by a living subject, or take off from a living subject, such as a human or an animal. Suitable animals can include avines, canines, felines, equines, bovines, ovines, porcines, dolphins, rodents, or insects.

The movable object may be capable of moving freely within the environment with respect to six degrees of freedom (e.g., three degrees of freedom in translation and three degrees of freedom in rotation). Alternatively, the movement of the movable object can be constrained with respect to one or more degrees of freedom, such as by a predetermined path, track, or orientation. The movement can be actuated by any suitable actuation mechanism, such as an engine or a motor. The actuation mechanism of the movable object can be powered by any suitable energy source, such as electrical energy, magnetic energy, solar energy, wind energy, gravitational energy, chemical energy, nuclear energy, or any suitable combination thereof. The movable object may be self-propelled via a propulsion system, as described elsewhere herein. The propulsion system may optionally run on an energy source, such as electrical energy, magnetic energy, solar energy, wind energy, gravitational energy, chemical energy, nuclear energy, or any suitable combination thereof. Alternatively, the movable object may be carried by a living being.

In some instances, the movable object can be an aerial vehicle. For example, aerial vehicles may be fixed-wing aircraft (e.g., airplane, gliders), rotary-wing aircraft (e.g., helicopters, rotorcraft), aircraft having both fixed wings and rotary wings, or aircraft having neither (e.g., blimps, hot air balloons). An aerial vehicle can be self-propelled, such as self-propelled through the air. A self-propelled aerial vehicle can utilize a propulsion system, such as a propulsion system including one or more engines, motors, wheels, axles, magnets, rotors, propellers, blades, nozzles, or any suitable combination thereof. In some instances, the propulsion system can be used to enable the movable object to take off from a surface, land on a surface, maintain its current position and/or orientation (e.g., hover), change orientation, and/or change position.

The movable object can be controlled remotely by a user or controlled locally by an occupant within or on the movable object. The movable object may be controlled remotely via an occupant within a separate vehicle. In some embodiments, the movable object is an unmanned movable object, such as a UAV. An unmanned movable object, such as a UAV, may not have an occupant onboard the movable object. The movable object can be controlled by a human or an autonomous control system (e.g., a computer control system), or any suitable combination thereof. The movable object can be an autonomous or semi-autonomous robot, such as a robot configured with an artificial intelligence.

The movable object can have any suitable size and/or dimensions. In some embodiments, the movable object may be of a size and/or dimensions to have a human occupant within or on the vehicle. Alternatively, the movable object may be of size and/or dimensions smaller than that capable of having a human occupant within or on the vehicle. The movable object may be of a size and/or dimensions suitable for being lifted or carried by a human. Alternatively, the movable object may be larger than a size and/or dimensions suitable for being lifted or carried by a human. In some instances, the movable object may have a maximum dimension (e.g., length, width, height, diameter, diagonal) of less than or equal to about: 2 cm, 5 cm, 10 cm, 50 cm, 1 m, 2 m, 5 m, or 10 m. The maximum dimension may be greater than or equal to about: 2 cm, 5 cm, 10 cm, 50 cm, 1 m, 2 m, 5 m, or 10 m. For example, the distance between shafts of opposite rotors of the movable object may be less than or equal to about: 2 cm, 5 cm, 10 cm, 50 cm, 1 m, 2 m, 5 m, or 10 m. Alternatively, the distance between shafts of opposite rotors may be greater than or equal to about: 2 cm, 5 cm, 10 cm, 50 cm, 1 m, 2 m, 5 m, or 10 m.

In some embodiments, the movable object may have a volume of less than 100 cm³×100 cm³×100 cm³, less than 50 cm³×50 cm³×30 cm³, or less than 5 cm³×5 cm³×3 cm³. The total volume of the movable object may be less than or equal to about: 1 cm³, 2 cm³, 5 cm³, 10 cm³, 20 cm³, 30 cm³, 40 cm³, 50 cm³, 60 cm³, 70 cm³, 80 cm³, 90 cm³, 100 cm³, 150 cm³, 200 cm³, 300 cm³, 500 cm³, 750 cm³, 1000 cm³, 5000 cm³, 10,000 cm³, 100,000 cm³, 1 m³, or 10 m³. Conversely, the total volume of the movable object may be greater than or equal to about: 1 cm³, 2 cm³, 5 cm³, 10 cm³, 20 cm³, 30 cm³, 40 cm³, 50 cm³, 60 cm³, 70 cm³, 80 cm³, 90 cm³, 100 cm³, 150 cm³, 200 cm³, 300 cm³, 500 cm³, 750 cm³, 1000 cm³, 5000 cm³, 10,000 cm³, 100,000 cm³, 1 m³, or 10 m³.

In some embodiments, the movable object may have a footprint (which may refer to the lateral cross-sectional area encompassed by the movable object) less than or equal to about: 32,000 cm², 20,000 cm², 10,000 cm², 1,000 cm², 500 cm², 100 cm², 50 cm², 10 cm², or 5 cm². Conversely, the footprint may be greater than or equal to about: 32,000 cm², 20,000 cm², 10,000 cm², 1,000 cm², 500 cm², 100 cm², 50 cm², 10 cm², or 5 cm².

In some instances, the movable object may weigh no more than 1000 kg. The weight of the movable object may be less than or equal to about: 1000 kg, 750 kg, 500 kg, 200 kg, 150 kg, 100 kg, 80 kg, 70 kg, 60 kg, 50 kg, 45 kg, 40 kg, 35 kg, 30 kg, 25 kg, 20 kg, 15 kg, 12 kg, 10 kg, 9 kg, 8 kg, 7 kg, 6 kg, 5 kg, 4 kg, 3 kg, 2 kg, 1 kg, 0.5 kg, 0.1 kg, 0.05 kg, or 0.01 kg. Conversely, the weight may be greater than or equal to about: 1000 kg, 750 kg, 500 kg, 200 kg, 150 kg, 100 kg, 80 kg, 70 kg, 60 kg, 50 kg, 45 kg, 40 kg, 35 kg, 30 kg, 25 kg, 20 kg, 15 kg, 12 kg, 10 kg, 9 kg, 8 kg, 7 kg, 6 kg, 5 kg, 4 kg, 3 kg, 2 kg, 1 kg, 0.5 kg, 0.1 kg, 0.05 kg, or 0.01 kg.

In some embodiments, a movable object may be small relative to a load carried by the movable object. The load may

include a payload and/or a carrier, as described in further detail elsewhere herein. In some examples, a ratio of a movable object weight to a load weight may be greater than, less than, or equal to about 1:1. In some instances, a ratio of a movable object weight to a load weight may be greater than, less than, or equal to about 1:1. Optionally, a ratio of a carrier weight to a load weight may be greater than, less than, or equal to about 1:1. When desired, the ratio of an movable object weight to a load weight may be less than or equal to: 1:2, 1:3, 1:4, 1:5, 1:10, or even less. Conversely, the ratio of a movable object weight to a load weight can also be greater than or equal to: 2:1, 3:1, 4:1, 5:1, 10:1, or even greater.

In some embodiments, the movable object may have low energy consumption. For example, the movable object may use less than about: 5 W/h, 4 W/h, 3 W/h, 2 W/h, 1 W/h, or less. In some instances, a carrier of the movable object may have low energy consumption. For example, the carrier may use less than about: 5 W/h, 4 W/h, 3 W/h, 2 W/h, 1 W/h, or less. Optionally, a payload of the movable object may have low energy consumption, such as less than about: 5 W/h, 4 W/h, 3 W/h, 2 W/h, 1 W/h, or less.

FIG. 18 illustrates an unmanned aerial vehicle (UAV) 1800, in accordance with embodiments of the present invention. The UAV may be an example of a movable object as described herein. The UAV 1800 can include a propulsion system having four rotors 1802, 1804, 1806, and 1808. Any number of rotors may be provided (e.g., one, two, three, four, five, six, or more). The rotors, rotor assemblies, or other propulsion systems of the unmanned aerial vehicle may enable the unmanned aerial vehicle to hover/maintain position, change orientation, and/or change location. The distance between shafts of opposite rotors can be any suitable length 410. For example, the length 1810 can be less than or equal to 2 m, or less than equal to 5 m. In some embodiments, the length 1810 can be within a range from 40 cm to 1 m, from 10 cm to 2 m, or from 5 cm to 5 m. Any description herein of a UAV may apply to a movable object, such as a movable object of a different type, and vice versa. The UAV may use an assisted takeoff system or method as described herein.

In some embodiments, the movable object can be configured to carry a load. The load can include one or more of passengers, cargo, equipment, instruments, and the like. The load can be provided within a housing. The housing may be separate from a housing of the movable object, or be part of a housing for a movable object. Alternatively, the load can be provided with a housing while the movable object does not have a housing. Alternatively, portions of the load or the entire load can be provided without a housing. The load can be rigidly fixed relative to the movable object. Optionally, the load can be movable relative to the movable object (e.g., translatable or rotatable relative to the movable object). The load can include a payload and/or a carrier, as described elsewhere herein.

In some embodiments, the movement of the movable object, carrier, and payload relative to a fixed reference frame (e.g., the surrounding environment) and/or to each other, can be controlled by a terminal. The terminal can be a remote control device at a location distant from the movable object, carrier, and/or payload. The terminal can be disposed on or affixed to a support platform. Alternatively, the terminal can be a handheld or wearable device. For example, the terminal can include a smartphone, tablet, laptop, computer, glasses, gloves, helmet, microphone, or suitable combinations thereof. The terminal can include a user interface, such as a keyboard, mouse, joystick, touchscreen, or display. Any suitable user input can be used to interact with the terminal, such

as manually entered commands, voice control, gesture control, or position control (e.g., via a movement, location or tilt of the terminal).

The terminal can be used to control any suitable state of the movable object, carrier, and/or payload. For example, the terminal can be used to control the position and/or orientation of the movable object, carrier, and/or payload relative to a fixed reference from and/or to each other. In some embodiments, the terminal can be used to control individual elements of the movable object, carrier, and/or payload, such as the actuation assembly of the carrier, a sensor of the payload, or an emitter of the payload. The terminal can include a wireless communication device adapted to communicate with one or more of the movable object, carrier, or payload.

The terminal can include a suitable display unit for viewing information of the movable object, carrier, and/or payload. For example, the terminal can be configured to display information of the movable object, carrier, and/or payload with respect to position, translational velocity, translational acceleration, orientation, angular velocity, angular acceleration, or any suitable combinations thereof. In some embodiments, the terminal can display information provided by the payload, such as data provided by a functional payload (e.g., images recorded by a camera or other image capturing device).

Optionally, the same terminal may both control the movable object, carrier, and/or payload, or a state of the movable object, carrier and/or payload, as well as receive and/or display information from the movable object, carrier and/or payload. For example, a terminal may control the positioning of the payload relative to an environment, while displaying image data captured by the payload, or information about the position of the payload. Alternatively, different terminals may be used for different functions. For example, a first terminal may control movement or a state of the movable object, carrier, and/or payload while a second terminal may receive and/or display information from the movable object, carrier, and/or payload. For example, a first terminal may be used to control the positioning of the payload relative to an environment while a second terminal displays image data captured by the payload. Various communication modes may be utilized between a movable object and an integrated terminal that both controls the movable object and receives data, or between the movable object and multiple terminals that both control the movable object and receives data. For example, at least two different communication modes may be formed between the movable object and the terminal that both controls the movable object and receives data from the movable object.

FIG. 19 illustrates a movable object 1900 including a carrier 1902 and a payload 1904, in accordance with embodiments. Although the movable object 1900 is depicted as an aircraft, this depiction is not intended to be limiting, and any suitable type of movable object can be used, as previously described herein. One of skill in the art would appreciate that any of the embodiments described herein in the context of aircraft systems can be applied to any suitable movable object (e.g., an UAV). In some instances, the payload 1904 may be provided on the movable object 1900 without requiring the carrier 1902. The movable object 1900 may include propulsion mechanisms 1906, a sensing system 1908, and a communication system 1910.

The propulsion mechanisms 1906 can include one or more of rotors, propellers, blades, engines, motors, wheels, axles, magnets, or nozzles, as previously described. The movable object may have one or more, two or more, three or more, or four or more propulsion mechanisms. The propulsion mechanisms may all be of the same type. Alternatively, one or more propulsion mechanisms can be different types of propulsion

mechanisms. The propulsion mechanisms 1906 can be mounted on the movable object 1900 using any suitable means, such as a support element (e.g., a drive shaft) as described elsewhere herein. The propulsion mechanisms 1906 can be mounted on any suitable portion of the movable object 1900, such on the top, bottom, front, back, sides, or suitable combinations thereof.

In some embodiments, the propulsion mechanisms 1906 can enable the movable object 1800 to take off vertically from a surface or land vertically on a surface without requiring any horizontal movement of the movable object 1900 (e.g., without traveling down a runway). Optionally, the propulsion mechanisms 1906 can be operable to permit the movable object 1900 to hover in the air at a specified position and/or orientation. One or more of the propulsion mechanisms 1900 may be controlled independently of the other propulsion mechanisms. Alternatively, the propulsion mechanisms 1900 can be configured to be controlled simultaneously. For example, the movable object 1900 can have multiple horizontally oriented rotors that can provide lift and/or thrust to the movable object. The multiple horizontally oriented rotors can be actuated to provide vertical takeoff, vertical landing, and hovering capabilities to the movable object 1900. In some embodiments, one or more of the horizontally oriented rotors may spin in a clockwise direction, while one or more of the horizontally oriented rotors may spin in a counterclockwise direction. For example, the number of clockwise rotors may be equal to the number of counterclockwise rotors. The rotation rate of each of the horizontally oriented rotors can be varied independently in order to control the lift and/or thrust produced by each rotor, and thereby adjust the spatial disposition, velocity, and/or acceleration of the movable object 1800 (e.g., with respect to up to three degrees of translation and up to three degrees of rotation).

The sensing system 1908 can include one or more sensors that may sense the spatial disposition, velocity, and/or acceleration of the movable object 1900 (e.g., with respect to up to three degrees of translation and up to three degrees of rotation). The one or more sensors can include global positioning system (GPS) sensors, motion sensors, inertial sensors, proximity sensors, or image sensors. The sensing data provided by the sensing system 1908 can be used to control the spatial disposition, velocity, and/or orientation of the movable object 1900 (e.g., using a suitable processing unit and/or control module, as described below). Alternatively, the sensing system 1908 can be used to provide data regarding the environment surrounding the movable object, such as weather conditions, proximity to potential obstacles, location of geographical features, location of manmade structures, and the like.

The communication system 1910 enables communication with terminal 1912 having a communication system 1914 via wireless signals 1916. The communication systems 1910, 1914 may include any number of transmitters, receivers, and/or transceivers suitable for wireless communication. The communication may be one-way communication, such that data can be transmitted in only one direction. For example, one-way communication may involve only the movable object 1900 transmitting data to the terminal 1912, or vice-versa. The data may be transmitted from one or more transmitters of the communication system 1910 to one or more receivers of the communication system 1912, or vice-versa. Alternatively, the communication may be two-way communication, such that data can be transmitted in both directions between the movable object 1900 and the terminal 1912. The two-way communication can involve transmitting data from

one or more transmitters of the communication system **1910** to one or more receivers of the communication system **1914**, and vice-versa.

In some embodiments, the terminal **1912** can provide control data to one or more of the movable object **1900**, carrier **1902**, and payload **1904** and receive information from one or more of the movable object **1900**, carrier **1902**, and payload **1904** (e.g., position and/or motion information of the movable object, carrier or payload; data sensed by the payload such as image data captured by a payload camera). In some instances, control data from the terminal may include instructions for relative positions, movements, actuations, or controls of the movable object, carrier and/or payload. For example, the control data may result in a modification of the location and/or orientation of the movable object (e.g., via control of the propulsion mechanisms **1906**), or a movement of the payload with respect to the movable object (e.g., via control of the carrier **1902**). The control data from the terminal may result in control of the payload, such as control of the operation of a camera or other image capturing device (e.g., taking still or moving pictures, zooming in or out, turning on or off, switching imaging modes, change image resolution, changing focus, changing depth of field, changing exposure time, changing viewing angle or field of view). In some instances, the communications from the movable object, carrier and/or payload may include information from one or more sensors (e.g., of the sensing system **1908** or of the payload **1904**). The communications may include sensed information from one or more different types of sensors (e.g., GPS sensors, motion sensors, inertial sensor, proximity sensors, or image sensors). Such information may pertain to the position (e.g., location, orientation), movement, or acceleration of the movable object, carrier and/or payload. Such information from a payload may include data captured by the payload or a sensed state of the payload. The control data provided transmitted by the terminal **1912** can be configured to control a state of one or more of the movable object **1900**, carrier **1902**, or payload **1904**. Alternatively or in combination, the carrier **1902** and payload **1904** can also each include a communication module configured to communicate with terminal **1912**, such that the terminal can communicate with and control each of the movable object **1900**, carrier **1902**, and payload **1904** independently.

In some embodiments, the movable object **1900** can be configured to communicate with another remote device in addition to the terminal **1912**, or instead of the terminal **1912**. The terminal **1912** may also be configured to communicate with another remote device as well as the movable object **1900**. For example, the movable object **1900** and/or terminal **1912** may communicate with another movable object, or a carrier or payload of another movable object. When desired, the remote device may be a second terminal or other computing device (e.g., computer, laptop, tablet, smartphone, or other mobile device). The remote device can be configured to transmit data to the movable object **1900**, receive data from the movable object **1900**, transmit data to the terminal **1912**, and/or receive data from the terminal **1912**. Optionally, the remote device can be connected to the Internet or other telecommunications network, such that data received from the movable object **1900** and/or terminal **1912** can be uploaded to a website or server.

FIG. **19** is a schematic illustration by way of block diagram of a system **2000** for controlling a movable object, in accordance with embodiments. The system **2000** can be used in combination with any suitable embodiment of the systems, devices, and methods disclosed herein. The system **2000** can include a sensing module **2002**, processing unit **2004**, non-

transitory computer readable medium **2006**, control module **2008**, and communication module **2010**.

The sensing module **2002** can utilize different types of sensors that collect information relating to the movable objects in different ways. Different types of sensors may sense different types of signals or signals from different sources. For example, the sensors can include inertial sensors, GPS sensors, proximity sensors (e.g., lidar), or vision/image sensors (e.g., a camera). The sensing module **2002** can be operatively coupled to a processing unit **2004** having a plurality of processors. In some embodiments, the sensing module can be operatively coupled to a transmission module **2012** (e.g., a Wi-Fi image transmission module) configured to directly transmit sensing data to a suitable external device or system. For example, the transmission module **2012** can be used to transmit images captured by a camera of the sensing module **2002** to a remote terminal.

The processing unit **2004** can have one or more processors, such as a programmable processor (e.g., a central processing unit (CPU)). The processing unit **2004** can be operatively coupled to a non-transitory computer readable medium **2006**. The non-transitory computer readable medium **2006** can store logic, code, and/or program instructions executable by the processing unit **2004** for performing one or more steps. The non-transitory computer readable medium can include one or more memory units (e.g., removable media or external storage such as an SD card or random access memory (RAM)). In some embodiments, data from the sensing module **2002** can be directly conveyed to and stored within the memory units of the non-transitory computer readable medium **2006**. The memory units of the non-transitory computer readable medium **2006** can store logic, code and/or program instructions executable by the processing unit **2004** to perform any suitable embodiment of the methods described herein. For example, the processing unit **2004** can be configured to execute instructions causing one or more processors of the processing unit **2004** to analyze sensing data produced by the sensing module. The memory units can store sensing data from the sensing module to be processed by the processing unit **2004**. In some embodiments, the memory units of the non-transitory computer readable medium **2006** can be used to store the processing results produced by the processing unit **2004**.

In some embodiments, the processing unit **2004** can be operatively coupled to a control module **2008** configured to control a state of the movable object. For example, the control module **2008** can be configured to control the propulsion mechanisms of the movable object to adjust the spatial disposition, velocity, and/or acceleration of the movable object with respect to six degrees of freedom. Alternatively or in combination, the control module **2008** can control one or more of a state of a carrier, payload, or sensing module.

The processing unit **2004** can be operatively coupled to a communication module **2010** configured to transmit and/or receive data from one or more external devices (e.g., a terminal, display device, or other remote controller). Any suitable means of communication can be used, such as wired communication or wireless communication. For example, the communication module **2010** can utilize one or more of local area networks (LAN), wide area networks (WAN), infrared, radio, WiFi, point-to-point (P2P) networks, telecommunication networks, cloud communication, and the like. Optionally, relay stations, such as towers, satellites, or mobile stations, can be used. Wireless communications can be proximity dependent or proximity independent. In some embodiments, line-of-sight may or may not be required for communications. The communication module **2010** can transmit and/or receive one

29

or more of sensing data from the sensing module **2002**, processing results produced by the processing unit **2004**, predetermined control data, user commands from a terminal or remote controller, and the like.

The components of the system **2000** can be arranged in any suitable configuration. For example, one or more of the components of the system **2000** can be located on the movable object, carrier, payload, terminal, sensing system, or an additional external device in communication with one or more of the above. Additionally, although FIG. **20** depicts a single processing unit **2004** and a single non-transitory computer readable medium **2006**, one of skill in the art would appreciate that this is not intended to be limiting, and that the system **2000** can include a plurality of processing units and/or non-transitory computer readable media. In some embodiments, one or more of the plurality of processing units and/or non-transitory computer readable media can be situated at different locations, such as on the movable object, carrier, payload, terminal, sensing module, additional external device in communication with one or more of the above, or suitable combinations thereof, such that any suitable aspect of the processing and/or memory functions performed by the system **2000** can occur at one or more of the aforementioned locations.

While preferred embodiments of the present invention have been shown and described herein, it will be obvious to those skilled in the art that such embodiments are provided by way of example only. Numerous variations, changes, and substitutions will now occur to those skilled in the art without departing from the invention. It should be understood that various alternatives to the embodiments of the invention described herein may be employed in practicing the invention. It is intended that the following claims define the scope of the invention and that methods and structures within the scope of these claims and their equivalents be covered thereby.

What is claimed is:

1. An unmanned aerial vehicle (UAV) energy provision station, said station comprising:

a UAV landing area configured to support a UAV when the UAV is resting on the station, said UAV coupled to a first battery configured to power the UAV;

a second battery in said station, said second battery capable of powering the UAV upon being coupled to the UAV; a battery charging unit capable of charging the first battery of the UAV; and

one or more processors, individually or collectively configured to receive, via wireless communication, information about a state of charge of the first battery and generate an instruction (a) prior to landing of the UAV on the UAV landing area, and (b) depending on the state of charge of the first battery, to effect a selection between: (1) exchanging the second battery for the first battery such that the first battery is decoupled from the UAV and the second battery is coupled to the UAV, and (2) charging the first battery with the battery charging unit, thereby allowing rapid battery replacement or charging of the UAV for its operation.

2. The UAV energy provision station of claim **1**, wherein the UAV is capable of taking off from the station vertically.

3. The UAV energy provision station of claim **1**, wherein the UAV comprises a recessed region, the second battery being configured to be inserted into the recessed region to couple to the UAV and provide power to the UAV.

4. The UAV energy provision station of claim **1**, wherein the UAV comprises a recessed region into which the first battery is inserted to couple to the UAV and provide power to

30

the UAV, the battery charging unit being configured to charge the first battery while the first battery is inserted in the recessed region.

5. The UAV energy provision station of claim **1**, wherein the UAV landing area comprises visible markers configured to aid the UAV in landing.

6. The UAV energy provision station of claim **5**, wherein the visible markers comprise images, wherein the images aid a UAV in landing when the UAV recognizes a particular image indicative that the UAV is to land.

7. The UAV energy provision station of claim **5**, wherein the visible markers comprises LED lights, wherein the LED lights flash in a specific spatial or temporal pattern that the UAV recognizes at the specific spatial or temporal pattern that is indicative that the UAV is to land.

8. The UAV energy provision station of claim **1**, wherein the UAV wirelessly transmits the information about the state of charge of the first battery to the station using a transmitter on board the UAV.

9. The UAV energy provision station of claim **1**, wherein the one or more processors are individually or collectively configured to generate the instruction to exchange the second battery with the first battery when the state of charge of the first battery is beneath a predetermined threshold value.

10. The UAV energy provision station of claim **9**, wherein the one or more processors are individually or collectively configured to generate the instruction to charge the first battery with the battery charging unit when the state of charge of the first battery is above the predetermined threshold value.

11. A method of providing energy to an unmanned aerial vehicle (UAV), said method comprising:

providing an energy provision station, said energy provision station comprising:

a UAV landing area configured to support a UAV when the UAV is resting on the station, said UAV coupled to a first battery configured to power the UAV;

a second battery in said station, said second battery capable of powering the UAV upon being coupled to the UAV; and

a battery charging unit capable of charging the first battery of the UAV; receiving information, at one or more processors of the station, about a state of charge of the first battery; and

generating, with aid of the one or more processors, an instruction (a) prior to landing of the UAV on the UAV landing area, and (b) depending on the state of charge of the first battery, to effect a selection between: (1) exchanging the second battery for the first battery such that the first battery is decoupled from the UAV and the second battery is coupled to the UAV, and (2) charging the first battery with the battery charging unit, thereby allowing rapid battery replacement or charging of the UAV for its operation.

12. The method of claim **11**, further comprising: (1) exchanging the second battery for the first battery such that the first battery is decoupled from the UAV and the second battery is coupled to the UAV, or (2) charging the second battery with the battery charging unit, in accordance with the generated instructions.

13. The UAV energy provision station of claim **1**, further comprising:

a movable battery storage unit comprising a plurality of holding stations configured to collectively store a plurality of batteries, including the second battery, capable of powering the UAV upon being coupled to the UAV, wherein the movable battery storage section is config-

31

ured to permit simultaneous movement of the plurality of holding stations relative to the UAV landing area; and a battery replacement member configured to take the second battery from a holding station of the movable battery storage unit, and couple the second battery to the UAV.

14. The UAV energy provision station of claim 13, wherein the movable battery storage unit comprises a carousel configuration for the plurality of holding stations.

15. The UAV energy provision station of claim 14, wherein the carousel comprises a plurality of holding stations configured to receive a battery.

16. The UAV energy provision station of claim 15, wherein the plurality of holding stations are configured to rotate around an axis rotation.

17. The UAV energy provision station of claim 16, wherein the axis of rotation is oriented in a horizontal direction.

18. The UAV energy provision station of claim 13, wherein the movable battery storage unit comprises at least four holding stations.

19. The UAV energy provision station of claim 13, wherein the movable battery storage unit comprises a battery charging unit capable of charging at least one battery in a holding station.

20. The UAV energy provision station of claim 5, wherein the visible markers are asymmetric and are configured to be indicative of an orientation of the UAV landing area relative to the UAV.

21. The UAV energy provision station of claim 13, wherein the battery replacement member is a mechanical elevator, and wherein the mechanical elevator is also configured to decouple the first battery from the UAV.

22. The UAV energy provision station of claim 21, wherein the mechanical elevator comprises a robotic arm clamp configured to grasp the first battery to decouple the first battery from the UAV, and wherein the mechanical elevator effects horizontal movement to decouple the first battery from the UAV.

32

23. The UAV energy provision station of claim 9, wherein the predetermined threshold value is variable as a function of battery age of the first battery, battery type of the first battery, flight conditions, ambient temperature, or distance to the next energy provision station.

24. The method of claim 12, wherein the second battery and the first battery are exchanged when the state of charge of the first battery is beneath a predetermined threshold value.

25. The method of claim 24, wherein the first battery is charged with the battery charging unit when the state of charge of the first battery is above the predetermined threshold value.

26. The method of claim 24, further comprising varying the predetermined threshold value based on battery age of the first battery, battery type of the first battery, flight conditions, ambient temperature, or distance to the next energy provision station.

27. The method of claim 11, wherein the instruction to effect the selection between (1) and (2) is generated also depending on an amount of time to perform (1), or an amount of time to perform (2) with the state of charge of the first battery.

28. The method of claim 27, wherein the instruction effects a selection of (1) when the amount of time to perform (1) is less than the amount of time to perform (2), and wherein the instruction effects a selection of (2) when the amount of time to perform (2) is less than the amount of time to perform (1).

29. The method of claim 11, wherein the UAV landing area comprises a visible marker configured to aid the UAV in landing, and wherein the visible marker is asymmetric and is configured to be indicative of an orientation of the UAV landing area relative to the UAV.

30. The method of claim 11, wherein the UAV is capable of taking off from the station vertically.

* * * * *