



US010006994B2

(12) **United States Patent**
Chan et al.

(10) **Patent No.:** **US 10,006,994 B2**

(45) **Date of Patent:** ***Jun. 26, 2018**

(54) **SYSTEMS AND METHODS FOR DETECTING SOIL CHARACTERISTICS**

(71) Applicant: **Elwha LLC**, Bellevue, WA (US)

(72) Inventors: **Alistair K. Chan**, Bainbridge Island, WA (US); **William David Duncan**, Sammamish, WA (US); **Roderick A. Hyde**, Redmond, WA (US); **Lowell L. Wood, Jr.**, Bellevue, WA (US)

(73) Assignee: **Elwha LLC**

(*) Notice: Subject to any disclaimer, the term of this patent is extended or adjusted under 35 U.S.C. 154(b) by 0 days. days.
This patent is subject to a terminal disclaimer.

(21) Appl. No.: **15/661,192**

(22) Filed: **Jul. 27, 2017**

(65) **Prior Publication Data**

US 2017/0336507 A1 Nov. 23, 2017

Related U.S. Application Data

(63) Continuation of application No. 15/450,476, filed on Mar. 6, 2017, now Pat. No. 9,733,355, which is a (Continued)

(51) **Int. Cl.**
G01S 13/89 (2006.01)
G01S 15/89 (2006.01)
(Continued)

(52) **U.S. Cl.**
CPC **G01S 13/89** (2013.01); **A01B 69/00** (2013.01); **A01C 7/085** (2013.01); **A01C 7/102** (2013.01);
(Continued)

(58) **Field of Classification Search**

CPC **G01S 13/89**; **G01S 43/00**; **G01S 13/885**; **G01S 13/887**; **G01S 15/89**; **A01C 7/085**; **A01G 23/04**; **A01G 25/167**; **B64D 1/18**
(Continued)

(56) **References Cited**

U.S. PATENT DOCUMENTS

4,438,710 A 3/1984 Paladino
4,444,130 A 4/1984 Ray
(Continued)

FOREIGN PATENT DOCUMENTS

WO WO 98/21927 5/1998
WO WO 03/038730 5/2003

OTHER PUBLICATIONS

Wang et al., Soil Tillage Management Affects Maize Grain Yield by Regulating Spatial Distribution Coordination of Roots, Soil Moisture and Nitrogen Status, 2015, Internet. p. 1-19.*

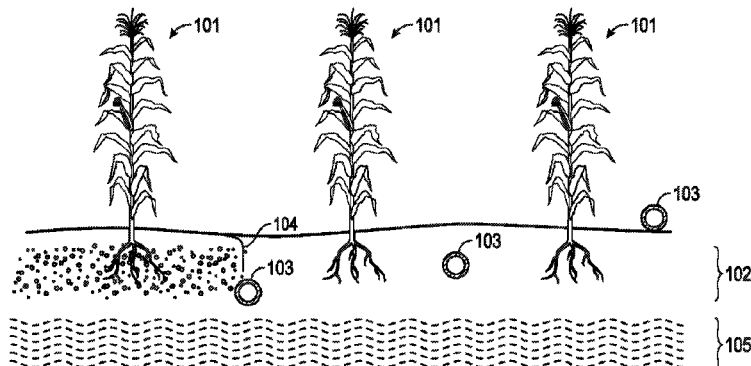
(Continued)

Primary Examiner — McDieunel Marc

(57) **ABSTRACT**

A soil detection and planting apparatus. The apparatus includes a vehicle and a controller coupled to the vehicle. The apparatus further includes a planting device coupled to the vehicle, the planting device configured to plant seeds or plants into a soil material. The apparatus includes a ground penetrating radar sensor coupled to the vehicle. The ground penetrating radar soil sensor is configured to scan the soil material up to a designated depth beneath a surface of the soil material, wherein the ground penetrating radar soil sensor is further configured to provide a sensor feedback signal to the controller with respect to an intrinsic characteristic of the soil material. The controller is configured to instruct placement of a seed or a plant into the soil material based on the feedback signal.

30 Claims, 12 Drawing Sheets



Related U.S. Application Data

continuation of application No. 14/983,105, filed on Dec. 29, 2015, now Pat. No. 9,618,614, which is a continuation of application No. 14/468,547, filed on Aug. 26, 2014, now Pat. No. 9,265,192, which is a continuation of application No. 13/898,298, filed on May 20, 2013, now Pat. No. 8,849,523.

(51) **Int. Cl.**

A01B 69/00 (2006.01)
A01C 7/08 (2006.01)
A01C 7/10 (2006.01)
A01C 23/04 (2006.01)
B64D 1/18 (2006.01)
B64D 43/00 (2006.01)
G01S 13/88 (2006.01)
A01G 25/16 (2006.01)

(52) **U.S. Cl.**

CPC *A01C 23/04* (2013.01); *A01G 25/167* (2013.01); *B64D 1/18* (2013.01); *B64D 43/00* (2013.01); *G01S 13/885* (2013.01); *G01S 13/887* (2013.01); *G01S 15/89* (2013.01)

(58) **Field of Classification Search**

USPC 701/50
 See application file for complete search history.

(56)

References Cited

U.S. PATENT DOCUMENTS

5,467,271 A 11/1995 Abel et al.
 6,016,713 A 1/2000 Hale
 6,041,582 A 3/2000 Tiede et al.
 6,164,223 A * 12/2000 Eriksson A01B 79/005
 111/200
 6,167,821 B1 1/2001 Beggs
 6,959,245 B2 * 10/2005 Rooney G01V 11/00
 700/283
 7,441,393 B2 10/2008 Piva et al.
 8,061,282 B2 11/2011 Borland
 8,195,342 B2 6/2012 Anderson
 8,224,500 B2 7/2012 Anderson
 8,560,145 B2 10/2013 Anderson

8,849,523 B1 * 9/2014 Chan G01S 13/89
 111/149
 9,265,192 B2 * 2/2016 Chan G01S 13/89
 9,618,614 B2 * 4/2017 Chan G01S 13/89
 9,733,355 B2 * 8/2017 Chan G01S 13/89
 2002/0169558 A1 11/2002 Smith et al.
 2003/0009286 A1 1/2003 Shibusawa et al.
 2003/0016029 A1 1/2003 Schuler et al.
 2004/0111202 A1 6/2004 Mailer
 2004/0225444 A1 11/2004 Young et al.
 2007/0151223 A1 7/2007 Piva et al.
 2009/0037059 A1 2/2009 Huster et al.
 2009/0259483 A1 10/2009 Hendrickson et al.
 2010/0063648 A1 3/2010 Anderson
 2010/0063954 A1 3/2010 Anderson
 2011/0126746 A1 6/2011 Borland
 2012/0277932 A1 11/2012 Anderson
 2013/0112122 A1 5/2013 Blomme et al.
 2016/0071410 A1 3/2016 Rupp et al.

OTHER PUBLICATIONS

McNairm et al., The Soil Moisture Active Passive Validation Experiment 2012 (SMAPVEX12): Prelaunch Calibration and Validation of the SMAP Soil Moisture Algorithms, 2015, IEEE, p. 2784-2801.*
 McNairm et al., Monitoring Soil Moisture to Support Risk Reduction for the Agriculture Sector Using RADARSAT-2, 2012, IEEE, p. 824-834.*
 Ping et al., The Identification Test of Soil Texture with Ground Penetrating Radar, 2010, IEEE, p. 81-84.*
 Lunt et al., "Soil moisture content estimation using ground-penetrating radar reflection data", Journal of Hydrology, 2005, vol. 307, pp. 254-269.
 Sucre et al., "The Use of Ground-Penetrating Radar to Accurately Estimate Soil Depth in Rocky Forest Soils", Forest Science, 2011, vol. 57(1), pp. 59-66.
 Chinese State Intellectual Property Office, Notification of the First Office Action, App. No. 201480029258.2 (Based on PCT Patent Application No. PCT/US2014/038463); Dec. 5, 2016 (received by our Agent on Dec. 12, 2016); pp. 1-12 (machine translation provided, 9 pages total).
 European Patent Office; Extended European Search Report, Pursuant to Rule 62 EPC; App. No. EP 14801012. 7; Dec. 12, 2016 (received by our agent on Dec. 23, 2016); pp. 1-7.
 PCT International Search Report; International App. No. PCT/US2014/038463; Sep. 26, 2014; pp. 1-3.

* cited by examiner

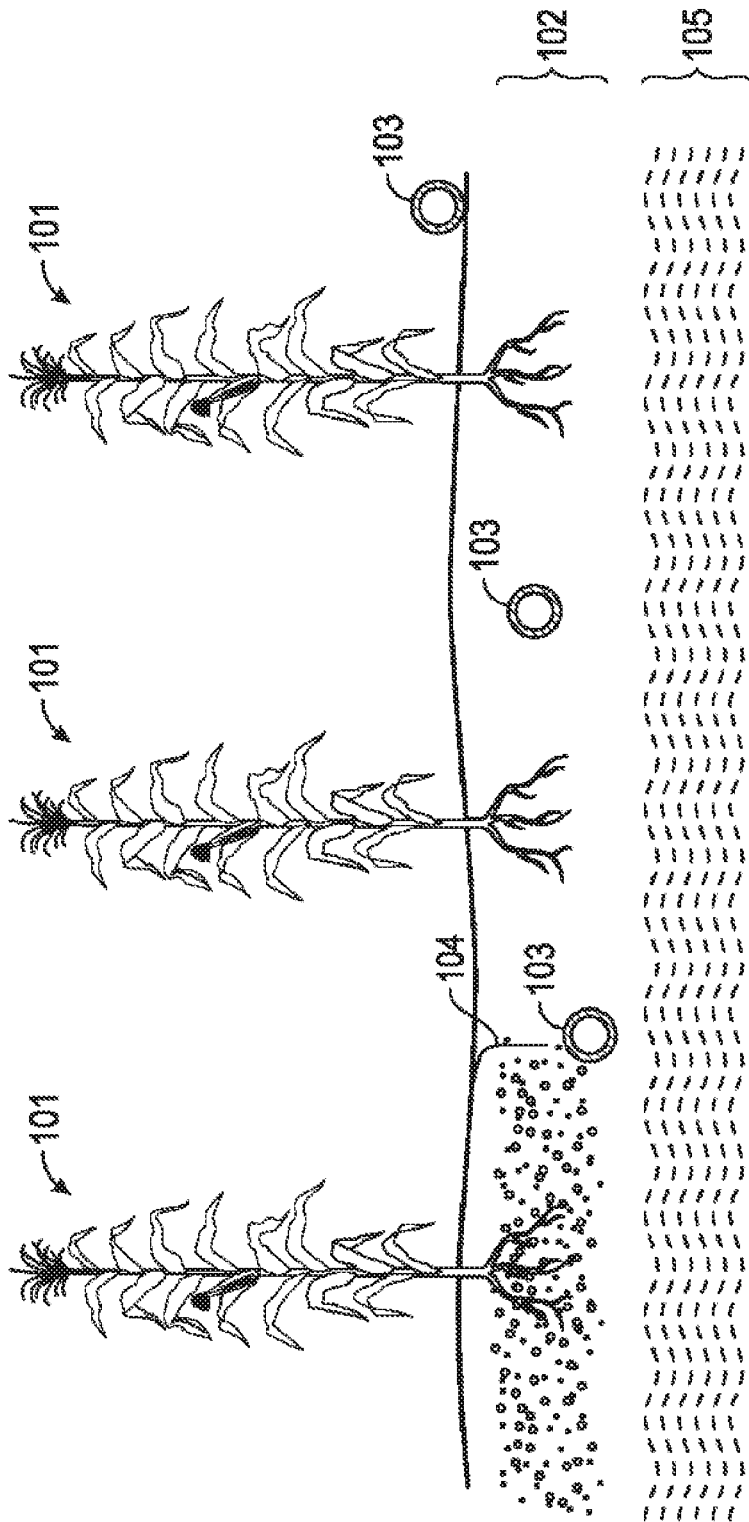


FIG. 1

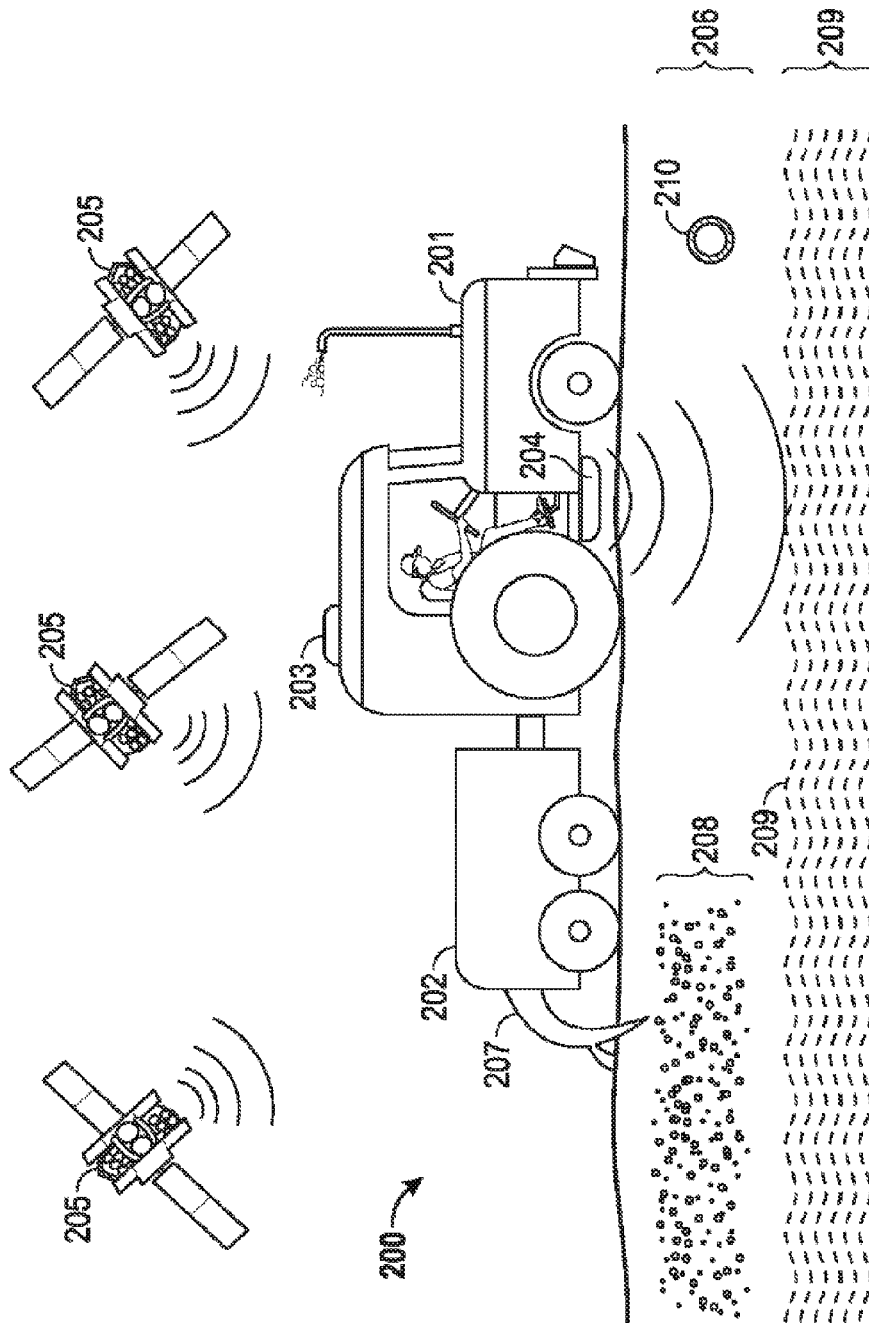


FIG. 2A

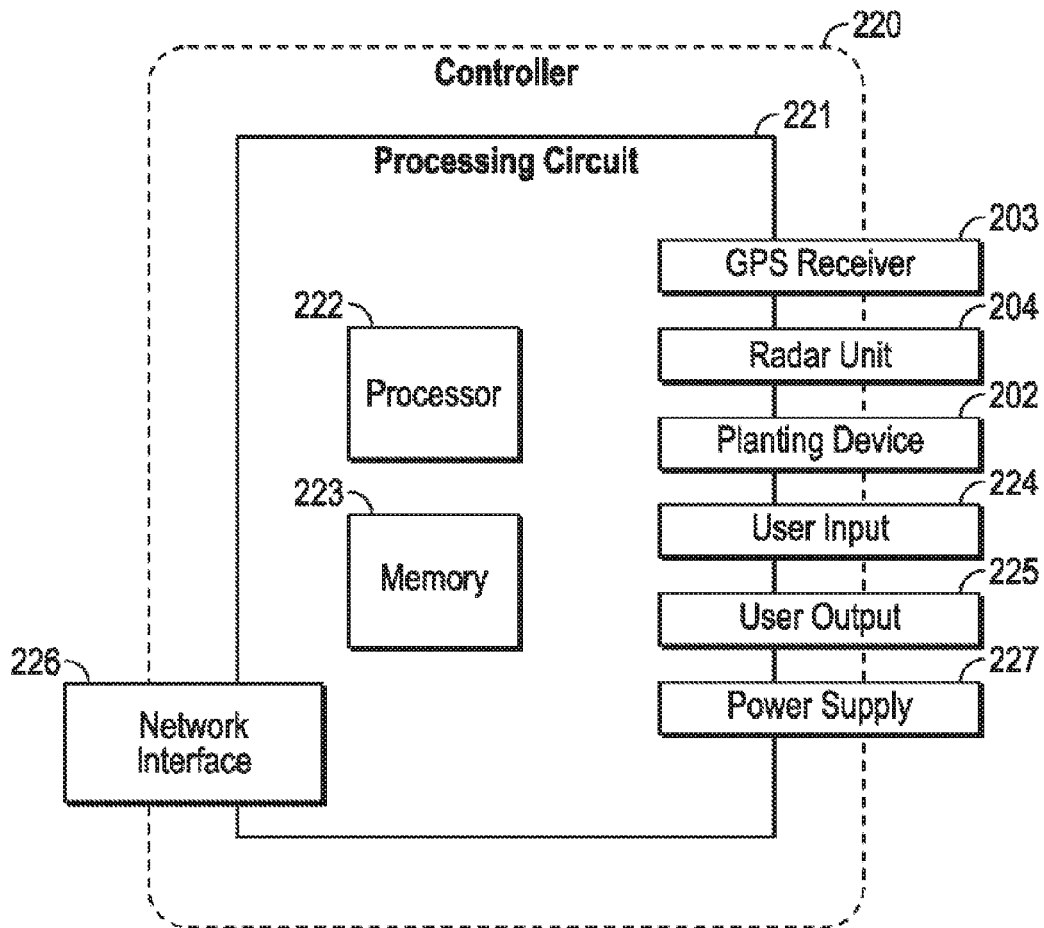


FIG. 2B

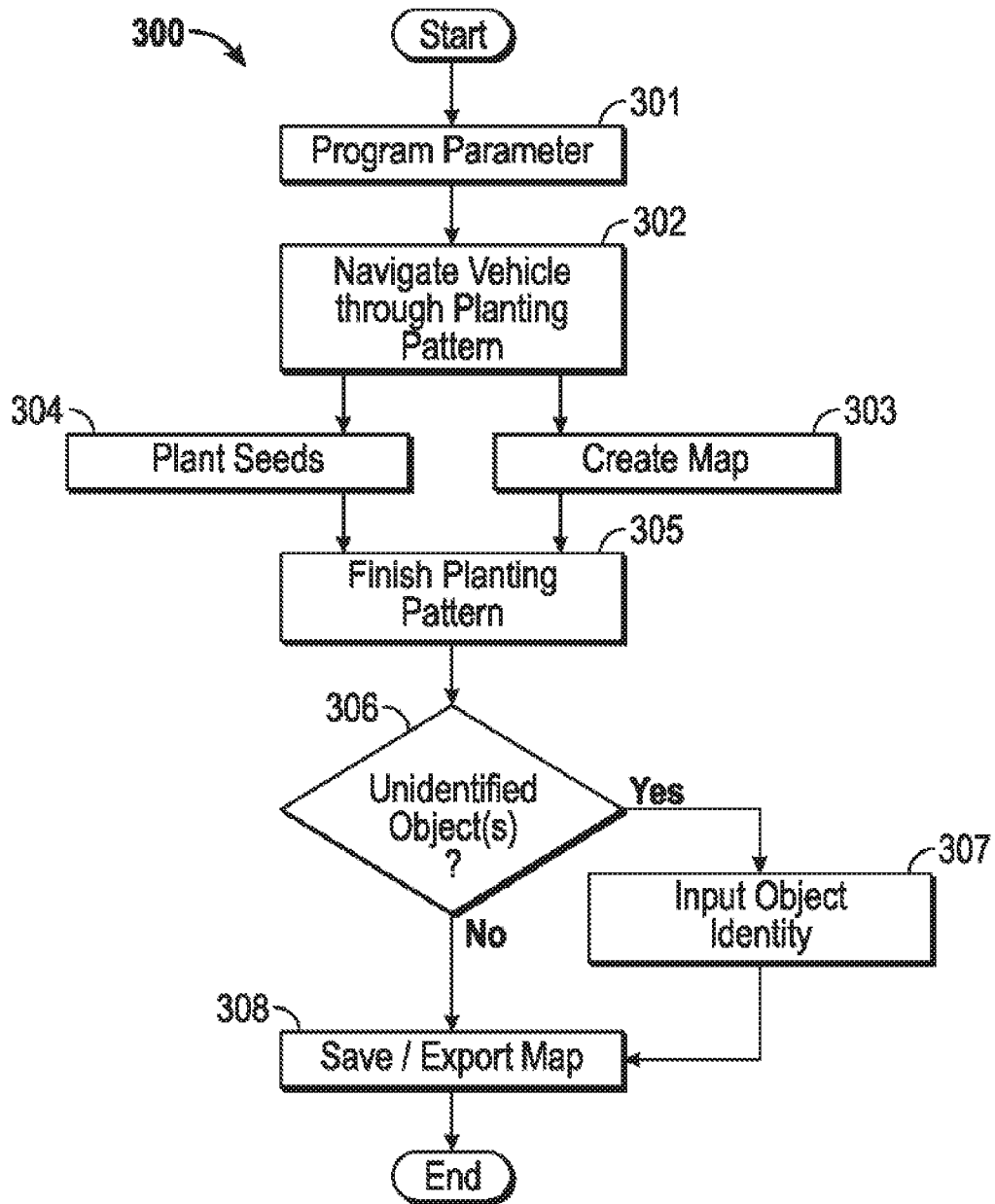


FIG. 3

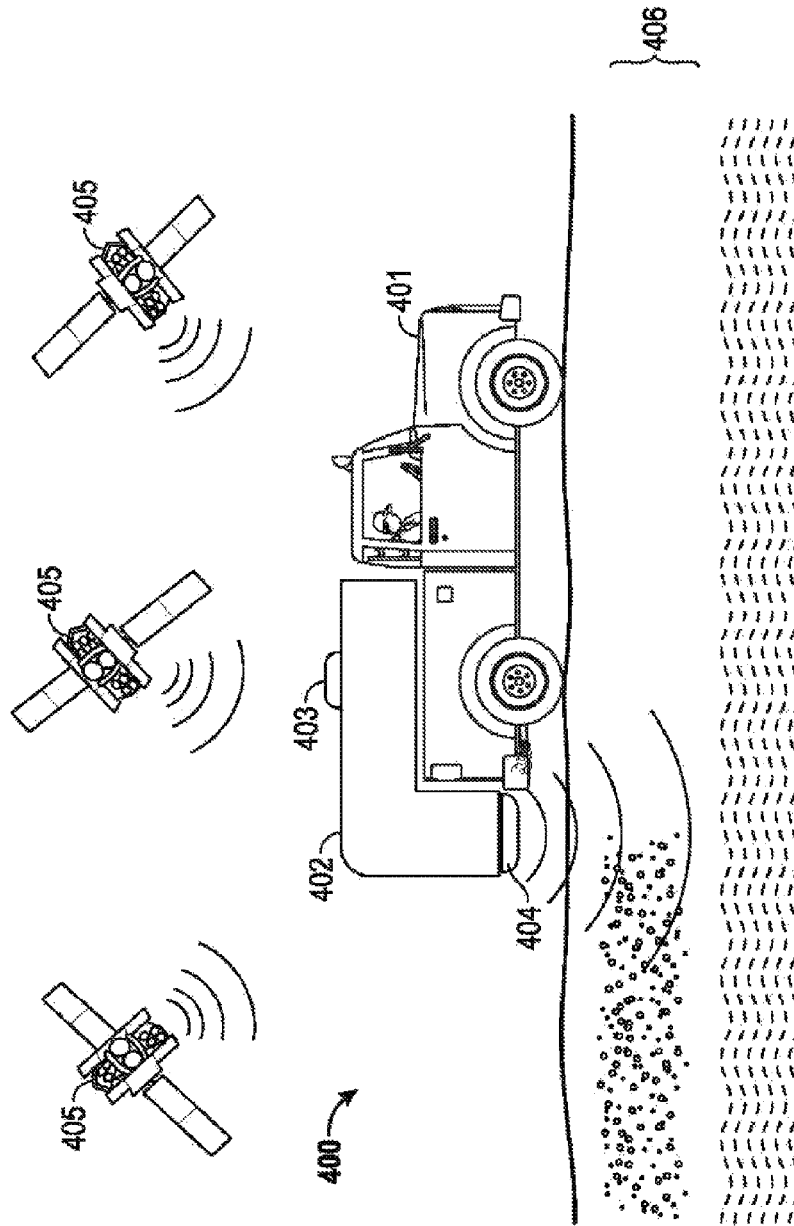


FIG. 4A

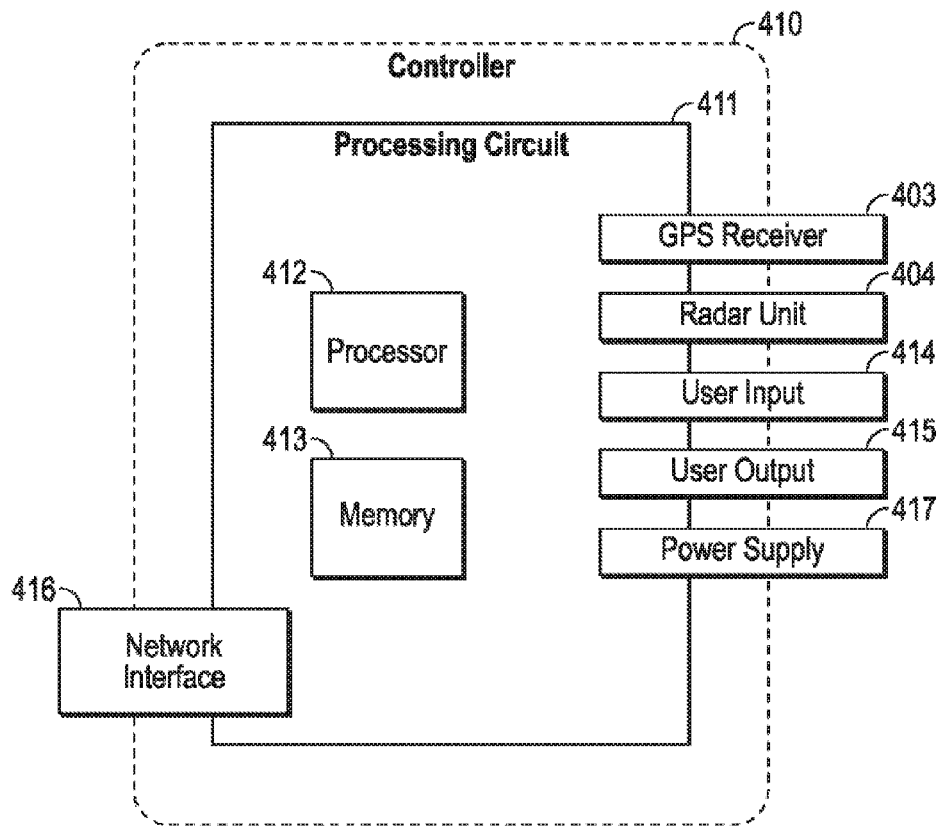


FIG. 4B

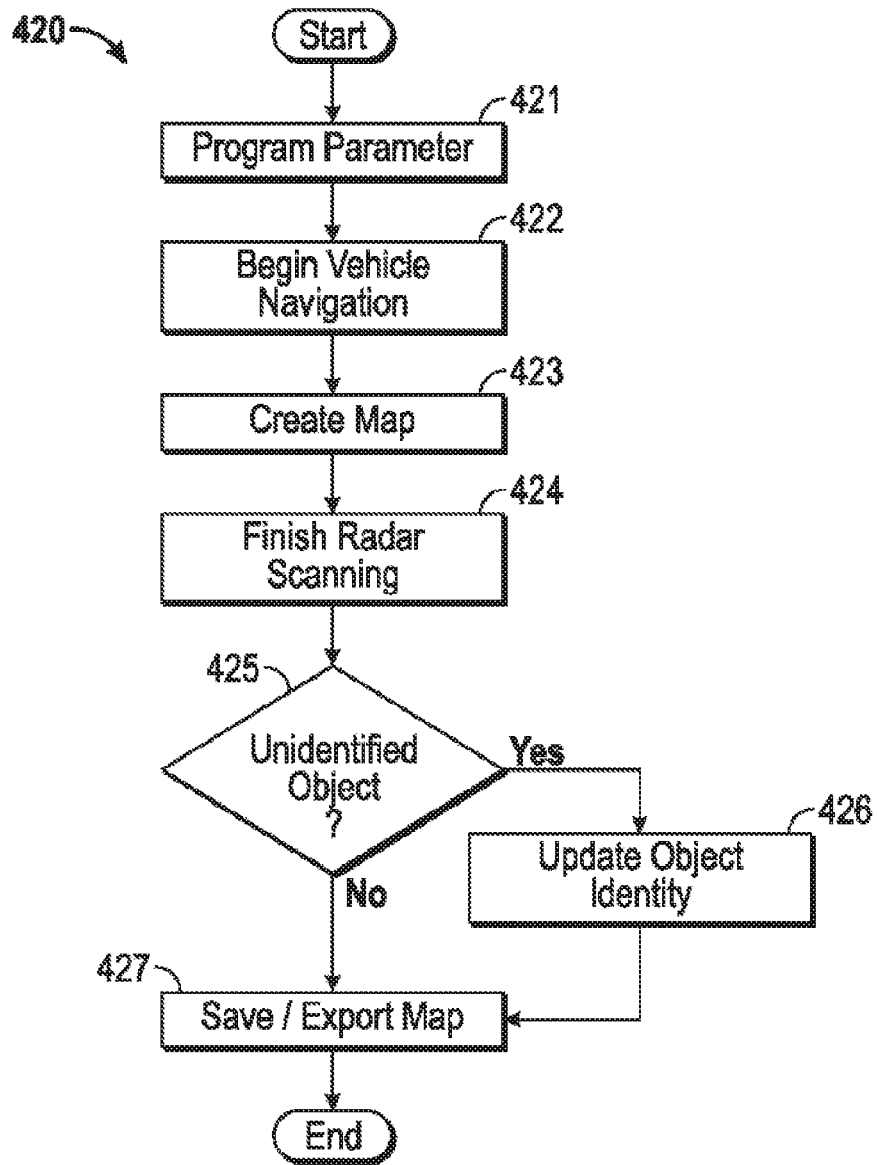


FIG. 4C

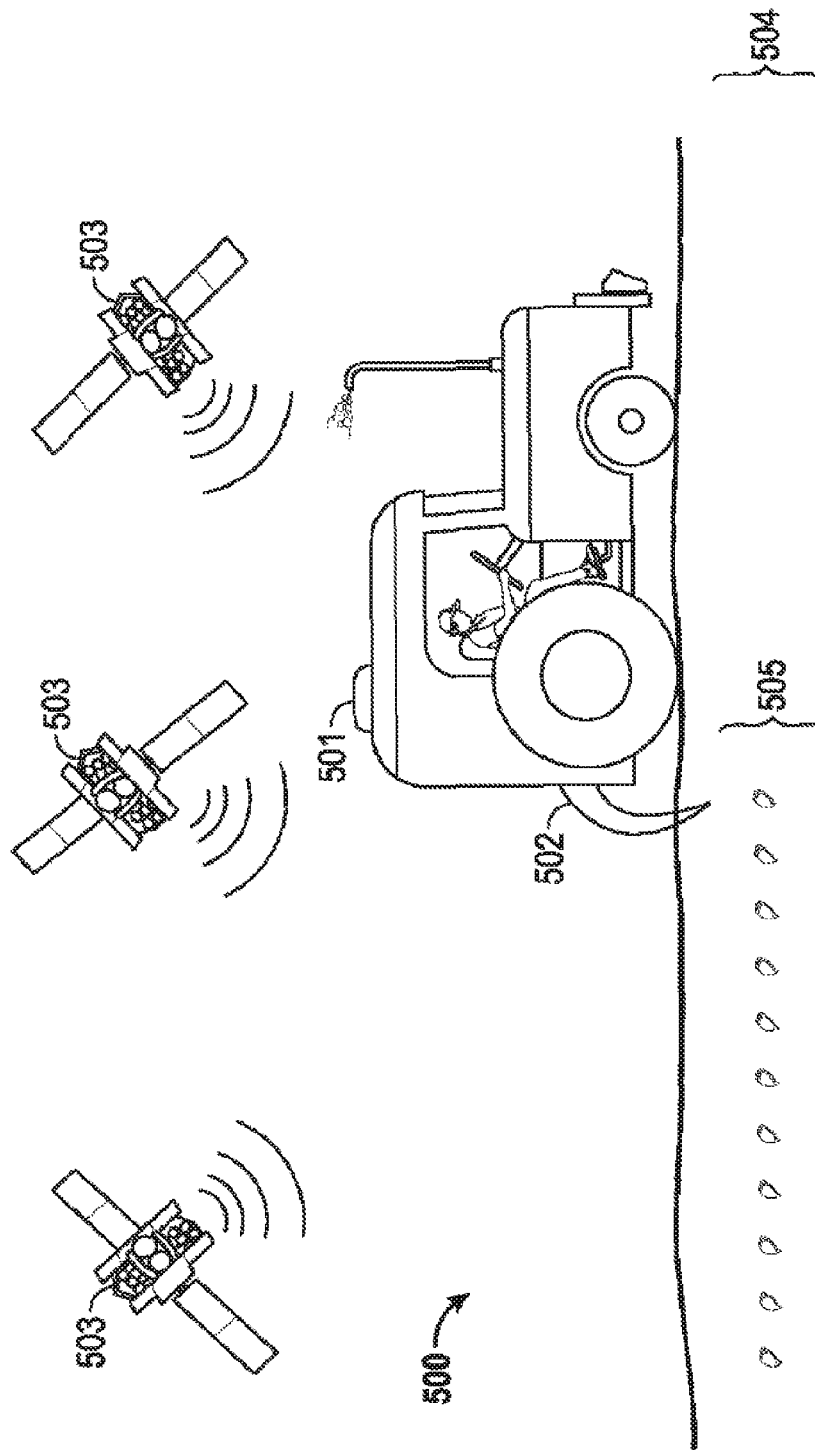


FIG. 5A

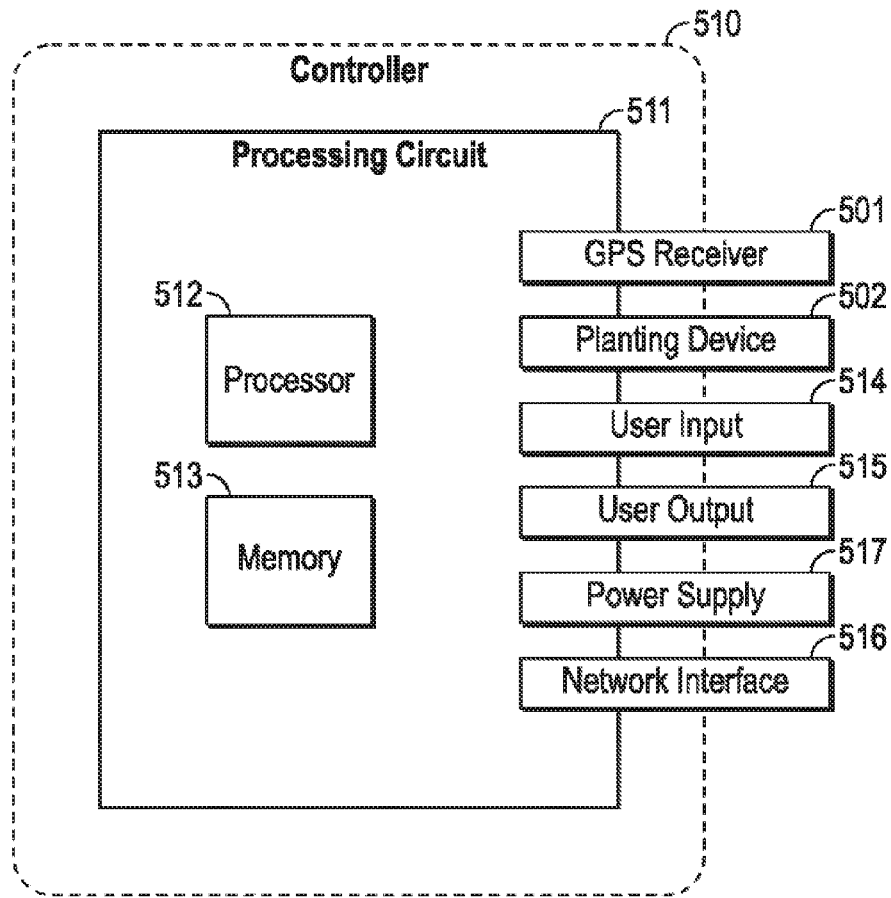


FIG. 5B

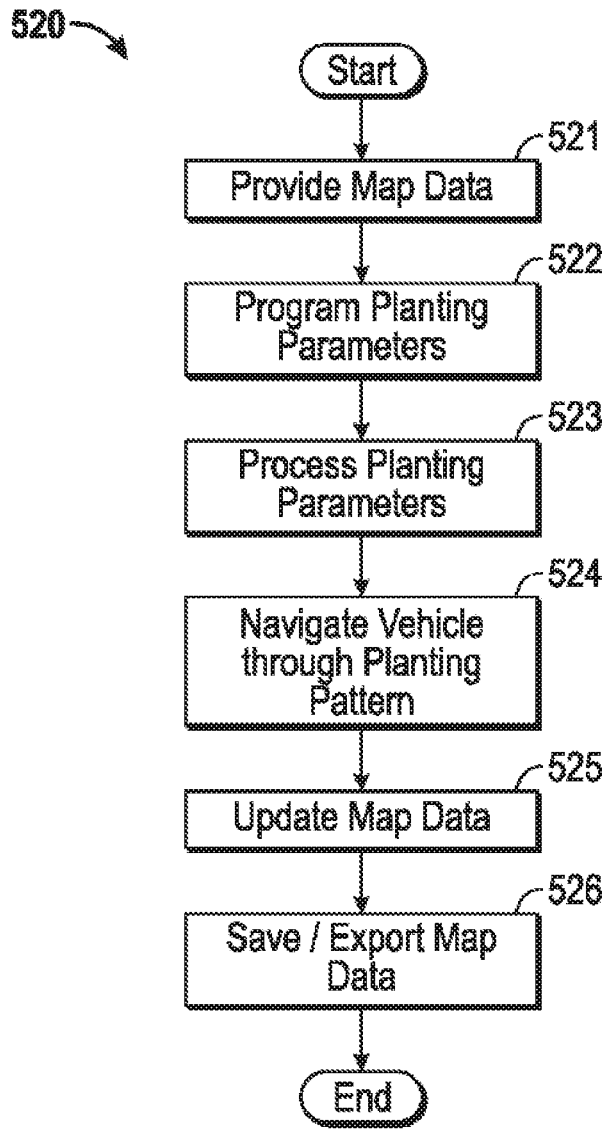


FIG. 5C

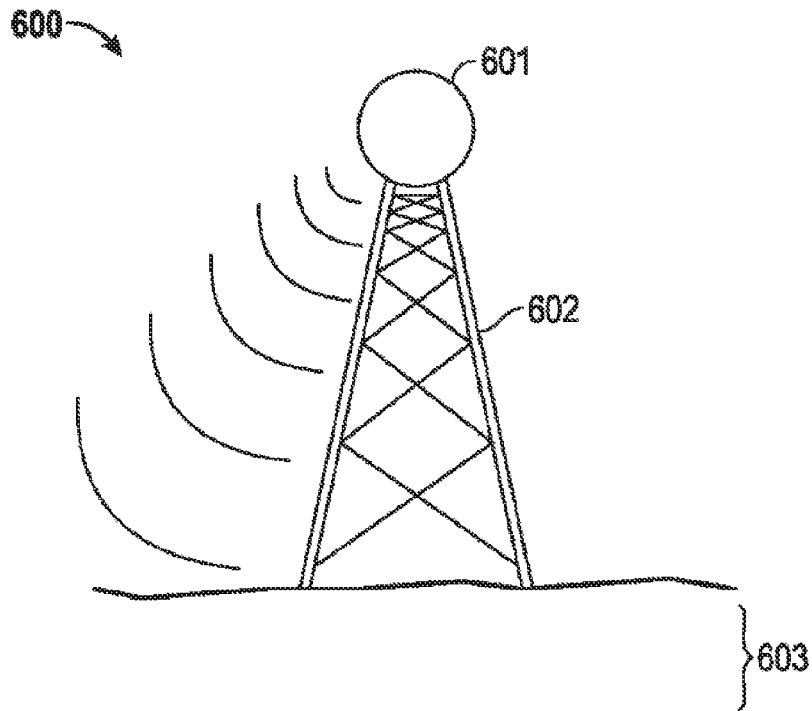


FIG. 6A

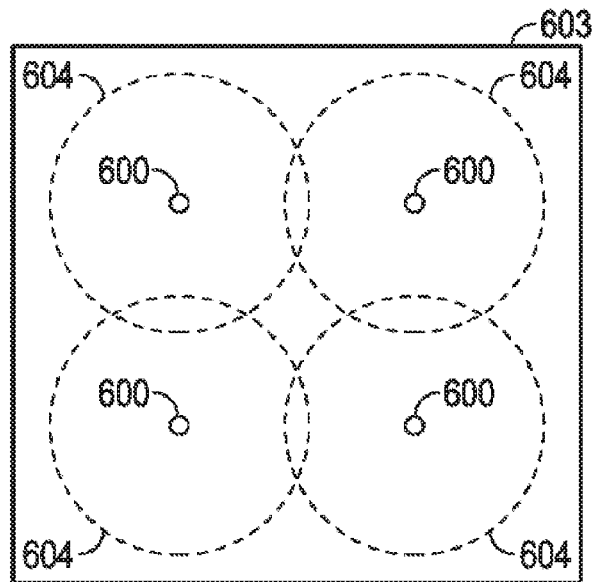


FIG. 6B

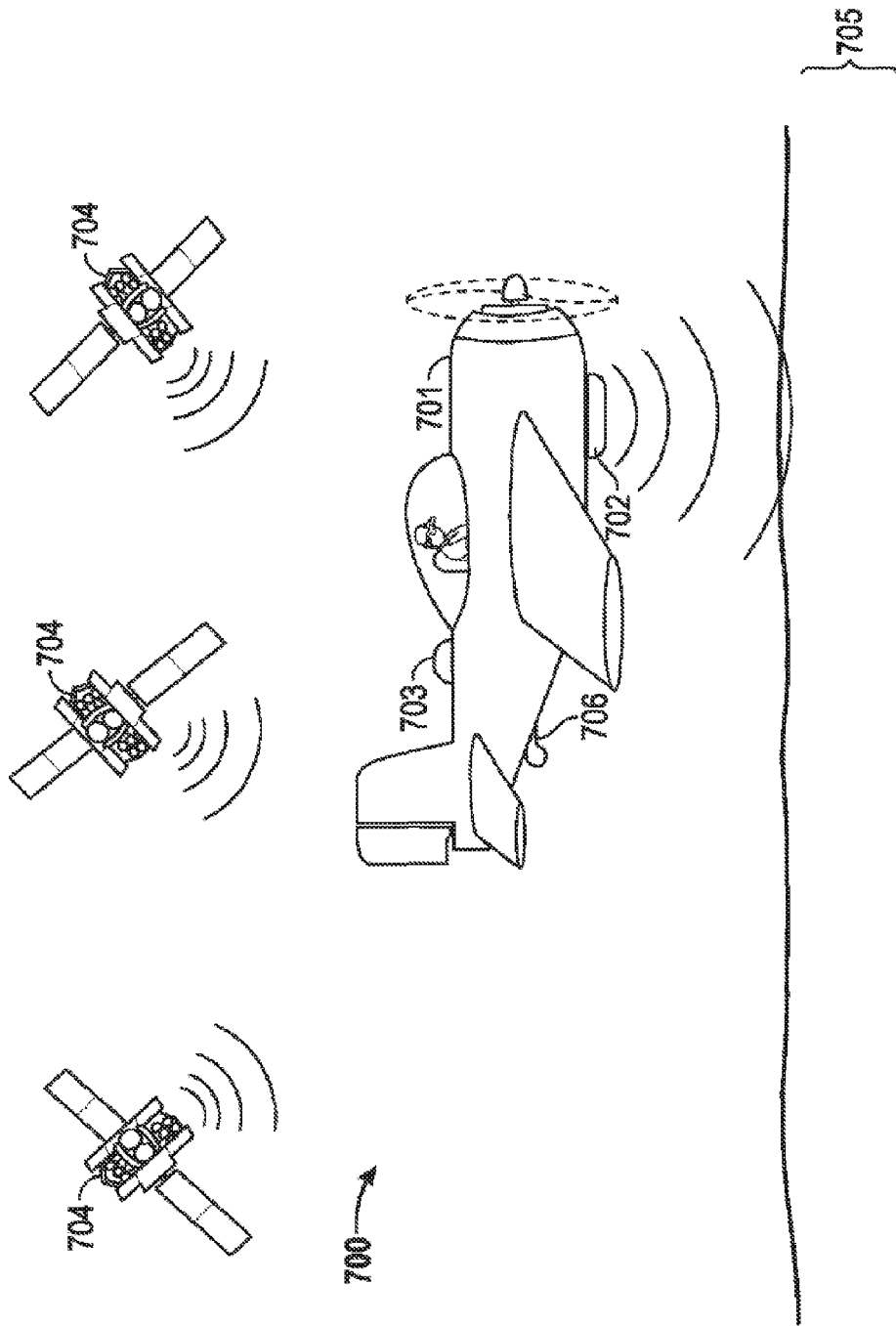


FIG. 7

SYSTEMS AND METHODS FOR DETECTING SOIL CHARACTERISTICS

CROSS-REFERENCE TO RELATED APPLICATIONS

The present application is related to and/or claims the benefit of the earliest available effective filing date(s) from the following listed application(s) (the "Priority Applications"), if any, listed below (e.g., claims earliest available priority dates for other than provisional patent applications or claims benefits under 35 USC § 119(e) for provisional patent applications, for any and all parent, grandparent, great-grandparent, etc. applications of the Priority Application(s)). In addition, the present application is related to the "Related Applications," if any, listed below.

The present application constitutes a continuation of U.S. patent application Ser. No. 15/450,476, entitled SYSTEMS AND METHODS FOR DETECTING SOIL CHARACTERISTICS, naming ALISTAIR K. CHAN, WILLIAM DAVID DUNCAN, RODERICK A. HYDE and LOWELL L. WOOD, JR. as inventors, filed 6, Mar. 2017, which is currently co-pending or is an application of which a currently co-pending application is entitled to the benefit of the filing date, and which is a continuation of U.S. patent application Ser. No. 14/983,105, entitled SYSTEMS AND METHODS FOR DETECTING SOIL CHARACTERISTICS, naming ALISTAIR K. CHAN, WILLIAM DAVID DUNCAN, RODERICK A. HYDE and LOWELL L. WOOD, JR. as inventors, filed 29, Dec. 2015, which is a continuation of U.S. patent application Ser. No. 14/468,547, entitled SYSTEMS AND METHODS FOR DETECTING SOIL CHARACTERISTICS, naming ALISTAIR K. CHAN, WILLIAM DAVID DUNCAN, RODERICK A. HYDE and LOWELL L. WOOD, JR. as inventors, filed 26, Aug. 2014, which is a continuation of U.S. patent application Ser. No. 13/898,298, entitled SYSTEMS AND METHODS FOR DETECTING SOIL CHARACTERISTICS, naming ALISTAIR K. CHAN, WILLIAM DAVID DUNCAN, RODERICK A. HYDE and LOWELL L. WOOD, JR. as inventors, filed 20, MAY 2013.

If the listings of applications provided above are inconsistent with the listings provided via an ADS, it is the intent of the Applicant to claim priority to each application that appears in the Priority Applications section of the ADS and to each application that appears in the Priority Applications section of this application.

All subject matter of the Priority Applications and the Related Applications and of any and all parent, grandparent, great-grandparent, etc. applications of the Priority Applications and the Related Applications, including any priority claims, is incorporated herein by reference to the extent such subject matter is not inconsistent herewith.

BACKGROUND

Agricultural growing operations operate efficiently when, among other things, seeds are planted in soil having optimal soil characteristics and the seeds are provided optimal amounts water and nutrients. Soil characteristics (e.g., soil composition, soil density, nutrient presence, humus presence, etc.) vary from location to location, both globally (e.g., from geographic region to geographic region) and locally (e.g., from spot to spot within a single area of land). Further,

the presence of soil moisture from natural sources or from man-made irrigation systems, varies from location to location.

Generally, a single agricultural growing operation involves planting a specific type of seed according to a set pattern over many acres of land (e.g., planting a field of corn in rows). Soil characteristics will often vary over the area of land used for the agricultural growing operation. Despite the variances in soil characteristics, seeds are generally planted in the same manner across the entire area of land used for growing operation. Further, many agricultural growing operations utilize man made delivery systems for water, nutrients, fertilizers, and/or other chemicals and soil additives. The delivery systems are buried or placed on the surface of the soil. The delivery systems are at risk of being damaged or destroyed as agricultural equipment disturbs the soil to plants seeds, harvests crops, and tills soil material.

SUMMARY

One exemplary embodiment relates to a soil detection and planting apparatus. The apparatus includes a vehicle and a controller coupled to the vehicle. The apparatus further includes a planting device coupled to the vehicle, the planting device configured to plant seeds or plants into a soil material. The apparatus includes a ground penetrating radar sensor coupled to the vehicle. The ground penetrating radar soil sensor is configured to scan the soil material up to a designated depth beneath a surface of the soil material, wherein the ground penetrating radar soil sensor is further configured to provide a sensor feedback signal to the controller with respect to an intrinsic characteristic of the soil material. The controller is configured to instruct placement of a seed or a plant into the soil material based on the feedback signal.

Another exemplary embodiment relates to a soil detection apparatus. The apparatus includes a housing coupled to a ground-driven vehicle. The apparatus further includes a controller coupled to the housing. The apparatus includes a ground penetrating radar soil sensor coupled to the housing. The ground penetrating radar soil sensor is configured to scan a soil material up to a designated depth beneath a surface of the soil material, wherein the ground penetrating radar soil sensor is further configured to provide a sensor feedback signal to the controller with respect to an intrinsic characteristic of the soil material. The apparatus further includes a location sensor coupled to the housing. The location sensor is configured to provide a location feedback signal to the controller. The controller is configured to create a map of the soil material based on the sensor feedback signal and the location feedback signal.

Yet another exemplary embodiment relates to an air-based soil detection apparatus. The apparatus includes an aircraft and a controller coupled to the aircraft. The apparatus further includes a soil sensor coupled to the aircraft. The soil sensor is configured to scan a soil material up to a designated depth beneath a surface of the soil material to locate at least a portion of an irrigation system contained within the soil material or on a surface of the soil material, wherein the soil sensor is further configured to provide a sensor feedback signal relating to the detected portion of the irrigation system to the controller. The apparatus includes a location sensor coupled to the aircraft. The location sensor is configured to provide a location feedback signal to the controller. The controller is configured to create a map of the soil

material including a location of the portion of the irrigation system based on the sensor feedback signal and the location feedback signal.

A further exemplary embodiment relates to a method of operating a vehicle including a controller. The vehicle is configured to map soil characteristics and plant seeds or plants. The method includes detecting intrinsic soil characteristics of a soil material through a ground penetrating radar unit coupled to the vehicle, wherein the ground penetrating radar unit is configured to scan the soil material up to a designated depth beneath a surface of the soil material, and wherein the ground penetrating radar unit is further configured to provide a sensor feedback signal to a controller with respect to the intrinsic soil characteristics. The method further includes, in response to the intrinsic soil characteristics, instructing a planting mechanism coupled to the vehicle to plant a seed or a plant.

Another exemplary embodiment relates to a method of mapping soil characteristics with a vehicle having a controller. The method includes receiving operating parameters through a user input of the vehicle. The method further includes navigating the vehicle through a vehicle path. The method further includes detecting intrinsic soil characteristics of a soil material through a ground penetrating radar unit coupled to the vehicle, wherein the ground penetrating radar unit is configured to scan the soil material up to a designated depth beneath a surface of the soil material, and wherein the ground penetrating radar unit is further configured to provide a sensor feedback signal to a controller of the vehicle. The method includes tracking a location of the vehicle through a location sensor coupled to the vehicle. The method further includes creating a map of an area of land traversed by the vehicle, wherein the map includes detected intrinsic soil characteristics, wherein the map is configured to be later updated to include the location of a planted plant or a planted seed.

The foregoing summary is illustrative only and is not intended to be in any way limiting. In addition to the illustrative aspects, embodiments, and features described above, further aspects, embodiments, and features will become apparent by reference to the drawings and the following detailed description.

BRIEF DESCRIPTION OF THE FIGURES

FIG. 1 is an exemplary view of corn planted in soil.

FIG. 2A is a soil detection and planting system according to an exemplary embodiment.

FIG. 2B is a block diagram of a controller of the soil detection and planting system.

FIG. 3 is a flow diagram of a method of mapping soil characteristics and planting seeds according to an exemplary embodiment.

FIG. 4A is a stand-alone soil detection and mapping system according to an exemplary embodiment.

FIG. 4B is a block diagram of a controller of the stand-alone soil detection and mapping system.

FIG. 4C is a flow diagram of a method of mapping soil characteristics according to an exemplary embodiment.

FIG. 5A is a stand-alone planting system according to an exemplary embodiment.

FIG. 5B is a block diagram of a controller of the stand-alone planting system.

FIG. 5C is a flow diagram of a method of planting seeds according to an exemplary embodiment.

FIG. 6A is a stationary soil characteristic detection system according to an exemplary embodiment.

FIG. 6B is a schematic view of a system of stationary soil characteristic detection systems.

FIG. 7 is an aerial soil characteristic detection system according to an exemplary embodiment.

DETAILED DESCRIPTION

In the following detailed description, reference is made to the accompanying drawings, which form a part hereof. In the drawings, similar symbols typically identify similar components, unless context dictates otherwise. The illustrative embodiments described in the detailed description, drawings, and claims are not meant to be limiting. Other embodiments may be utilized, and other changes may be made, without departing from the spirit or scope of the subject matter presented here.

Referring to FIG. 1, a cross-section of an agricultural growing operation is shown. Corn **101** is planted in soil **102**. The agricultural growing operation utilizes delivery pipes **103**. Delivery pipes **103** provide water, pesticides, nutrients, and/or other chemicals to soil **102**. Delivery pipes **103** are located at varying distances beneath the surface of soil **102** or are located on the surface of soil **102**. Further, the composition and characteristics of soil **102** varies at different locations. For example, soil **102** may contain varying amounts of rocks **104**, soil water **105**, nutrients, pesticides, humus, and other elements or objects. Optimal seed placement varies with location along the surface of soil **102**. For example, a farmer does not wish to plant seeds in the middle of sub-surface rocks, but does wish to plant seeds at a depth such that roots of the plants will reach sub-surface water contained within soil **102** or within percolation distance from delivery pipes **103**. Further, it is desirable to plant seeds such that agricultural machinery (e.g., planters, tillers, combines, etc.) will not damage placed delivery pipes **103**.

Referring to FIG. 2, a soil characteristic mapping and planting system **200** is shown according to an exemplary embodiment. System **200** includes a ground-driven vehicle **201** and a planting device **202**. Although system **200** shows planting device **202** as being towed by vehicle **201**, planting device **202** may be integrated into vehicle **201**. Vehicle **201** includes GPS receiver **203** and a ground or soil sensor, shown as ground penetrating radar unit **204**. GPS receiver **203** receives signals from GPS satellites **205** and is configured to provide a feedback signal used to track the location of vehicle **201**. Radar unit **204** utilizes ground penetrating radar to determine intrinsic and extrinsic characteristics of soil **206**. Exemplary intrinsic soil characteristics may include a composition of the soil material, a water property of the soil (e.g., how much water is contained in the soil and how deep the water is located), a presence of humus in the soil material, a density of the soil material, a soil material porosity, and any other intrinsic characteristics soil **206** may have. Exemplary extrinsic soil characteristics may include the presence of soil **206**, the depth of soil **206**, an object buried in soil **206** (e.g., rocks, wood, ore deposits, pipes, etc.), and any other extrinsic characteristic of soil **206**. Planting device **202** includes a planter **207**. Planter **207** is configured to dig a hole or trench in soil **206**, place a seed in the hole or trench, and cover the seed with displaced soil material. Planter **207** is depth adjustable such that seeds can be buried at different depths within soil **206**. Planter **207** is controllable such that seeds can be placed at various densities (e.g., at a designated number of seeds per area planted, on a seed-by-seed basis, etc.). System **200** is generally configured to detect soil characteristics through radar unit **204** and adjust planting device **202** based on detected soil

characteristics. Further, system **200** is configured to generate a map of soil **206** by pairing location data from GPS receiver **203** with soil characteristic data from radar unit **204**. The map created by system **200** is a collection of data points coupled to location information, that when processed, may be reproduced into a visual representation of the map (e.g., for viewing by an operator through a display) or a set of data and location points for further processing by a system controller (e.g., to properly instruct plant or seed placement). The collected map data points may be stored in an R-tree data structure, an array data structure, or another suitable data structure. The map may be a three-dimensional map. The details of the operation of system **200** are described below.

In one embodiment, radar unit **204** is a non-insertion soil-penetrating radar unit. Alternatively, radar unit includes an antenna that inserts into soil **206**. Radar unit **204** emits electromagnetic radio waves into soil **206**. As the waves travel through soil **206**, portions of the waves are reflected back at different strengths depending on the composition of soil **206** and the presence and depths of objects within soil **206**. Radar unit **204** is capable of detecting the presence and depth of rocks **208**, soil water **209**, buried delivery and/or drainage pipes **210**, and any other objects within soil **206** based on reflected radio wave signatures (i.e., extrinsic characteristics). Radio waves transmitted by radar unit **204** are high-frequency waves. For example, the radio waves may have frequencies between 300 MHz and 3000 MHz or in excess of 3000 MHz. The utilization of high-frequency radio waves enables radar unit **204** to scan soil **206** at a high resolution such that it can detect soil characteristics (e.g., soil composition, soil density), the presence of soil water **209**, the depth of the soil water **209**, the amount of soil water **209**, the presence and type of minerals present in soil **206**, the presence and amount of humus in soil **206**, and other soil characteristics (i.e., intrinsic characteristics). More detailed explanations of utilizing ground penetrating radar to detect soil characteristics can be found in “The Use of Ground-Penetrating Radar to Accurately Estimate Soil Depth in Rocky Forest Soils,” by Sucre et al., “Soil Electromagnetic Mapping for Enhanced GPR Utility Location,” by Thomas et al., and “Soil moisture content estimation using ground-penetrating radar reflection data,” by Lunt et al., each of which are incorporated herein by reference in their entireties. Radar unit **204** may transmit unmodulated continuous-wave signals that are used to create a plan-view subsurface hologram of soil **206**. In an alternate configuration, reflection seismology is used to transmit acoustic waves through soil **206**, and reflected acoustic waves are analyzed to determine the composition of soil **206** and the location of objects within soil **206**. Radar unit **204** provides feedback signals that include data pertaining to detected soil characteristics to controller **220** (as shown in FIG. 2B), where the data is processed into a three-dimensional map of soil **206**.

Referring to FIG. 2B, a block diagram of controller **220** is shown. Controller **220** includes processing circuit **221**. Processing circuit **221** includes processor **222** and memory **223**. Processing circuit **221** communicates with GPS receiver **203**, radar unit **204**, planting device **202**, user input **224**, user output **225**, and network interface **226**. Controller **220** is powered by power supply **227**. Memory **223** stores necessary programming modules that when executed by processor **222**, control the operation of planting device **202** and the creation of the three-dimensional map of soil **206** based on settings, parameters, and feedback signals received through user input **224**, GPS receiver **203**, and radar unit **204**. User input **224** is configured to provide an interface for

a user to input desired operational parameters for system **200** (e.g., type of plant seed being placed, desired soil characteristics for planting, density of planting, etc.). User input **224** includes a series of knobs, wheels, multi-position switches, a keyboard, a mouse, or any combination thereof. User output **225** includes a display. User output **225** optionally includes audio output (e.g., for emitting beeps and tones) and/or indicator lights (e.g., LEDs for indicating system **200** statuses and alerts). It is contemplated that user input **224** and user output **225** are combined into a touch-screen display such that a user of system **200** can program desired settings and parameters through interaction with a graphical user interface presented on the display. Network interface **226** is configured to communicate with an external server or an external computing device. Network interface includes at least one of an Ethernet interface and a wireless transceiver (e.g., Bluetooth, 802.11, etc.). Power supply **227** provides power to controller **220**. Power supply **227** may provide power to all components of system **200** (e.g., GPS receiver **203**, radar unit **204**, etc.). Power supply **227** may receive power from any suitable source (e.g., a rechargeable battery, a non-rechargeable battery, a generator onboard vehicle **201**, an electronic alternator running off of the engine that powers vehicle **201**, etc.).

Controller **220** is configured to process feedback signals from GPS receiver **203** and radar unit **204** based on provided operating parameters. As vehicle **201** moves along soil **206**, and controller **220** receives feedback signals from radar unit **204** that indicates detected soil characteristics and GPS receiver **203** that indicate vehicle **201**'s location. Controller **220** processes these feedback signals into a detailed three-dimensional map of soil **206**. The three-dimensional map includes location specific information pertaining to the composition of soil **206** (e.g., chemical composition, moisture amount, density, humus presence, etc.), the presence of objects (e.g., buried rocks, pipes, etc.), and other information pertaining to soil **206** up to a specified depth beneath the surface of soil **206**. The depth parameter of the three-dimensional map (e.g., one foot beneath the surface, two feet beneath the surface, etc.) may be a user provided parameter. Controller **220** is configured to analyze feedback signals from radar unit **204** to locate and identify objects underneath the surface of soil **206** (e.g., rocks, soil water, delivery pipes, etc.). Detected objects are identified by their radar signatures. For example, radar waves reflected off of soil water will have a different signature than radar waves reflected off of rocks. Controller **220** automatically determines the identity of objects beneath the surface of soil **206**. Alternatively, objects are manually identified and updated on the map through user input. For example, objects that cannot be automatically identified are marked as unknown on the map. The user then manually identifies the unknown objects (e.g., by taking a soil sample, by digging the object out of the soil, etc.). If the user removes the unknown object (e.g., a large rock is removed from beneath the surface of soil **206**), the user may indicate that the object has been removed, and that it should be removed from the map. If the object remains in soil **206** (e.g., the object is a variation in soil composition), the user can identify the object on the map and the object's identity is stored. Alternatively, the user may choose to have the object remain unidentified.

As vehicle **201** moves along soil **206**, controller **220** instructs planting device **202** to plant seeds into soil **206**. Planting device **202** is capable of planting seeds at varying depths and densities. Based on user provided parameters and detected soil conditions, controller **220** instructs planting device **202** to deposit seeds at specific locations and at

specific depths. For example, controller **220** may instruct planter **207** such that seeds are placed in desirable locations (e.g., nutrient rich locations, locations with soil water, locations within water percolation distance from underground irrigation systems, locations having subsurface materials placed for water retention, etc.) and are not placed in undesirable locations (e.g., locations with a high density of rocks, locations with little or no soil water, locations out of water percolation distance from underground irrigation systems, locations with insufficient soil depth, etc.). Planter **207** is further adjusted such that certain objects are not damaged (e.g., such that planter does not contact and damage pipe **210**). Upon the successful placement of a seed by planting device **202**, controller updates the map of soil **206** to indicate the placement of the seed (e.g., marks the map with an indication of the seed's placement). The created map may be exported to an external computing device via network interface **226**, stored in memory **223**, or stored on removable storage media (e.g., SD memory card, MicroSD memory card, USB flash memory, etc.). The user can then reference the created map after soil **206** has been mapped and/or after seeds have been planted.

Referring to FIG. 3, a method of operating a system configured to plant seeds and create a map of an area planted based on detected soil characteristics (e.g., system **200**) is shown according to an exemplary embodiment. The system includes a vehicle configured to map soil characteristics and plant seeds. The user programs operating parameters into the system (step **301**). The operating parameters include planting parameters. The planting parameters include any of the type of plant seed being placed, desired seed placement characteristics (e.g., depth beneath the surface, proximity to water supply, soil composition), designated soil attributes to avoid or target (e.g., a threshold level of a detected substance to avoid, a threshold level of detected substance to plant in, etc.), seed placement density, future processing strategy (e.g., fertilizing strategy, watering strategy, target harvest date, etc.), and any other desired planting parameters. For example, a user may indicate that seeds are not to be placed in soil containing a threshold percentage of rocks, but that seeds are to be placed in soil containing a threshold level of soil water. Further, the user can indicate seeds are to be placed at designated detected locations (e.g., within percolation distance of irrigation systems, locations having subsurface materials placed for water retention, etc.) and are not to be placed in designated detected locations (e.g., on top of a buried pipe). The user can further provide a previously created map of the area to be planted to the system. The map includes a collection of data points coupled to location information, that when processed, may be reproduced into a visual representation of the map (e.g., for viewing by an operator through a display) or a set of data and location points for use by a system controller (e.g., to determine proper seed placement). The collected map data points may be stored in an R-tree data structure, an array data structure, or another suitable data structure. The map may be a three-dimensional map. The provided map includes information pertaining to the layout of the area to be planted and other information (e.g., the location of underground liquid delivery systems, the locations of buried rocks, the locations of previous seed locations, information pertaining to soil composition, etc.). The user provides the planting parameters to the system through a user input. The user input includes a series of knobs, wheels, multi-position switches, a keyboard, a mouse, a touchscreen display, or any combination thereof. A user can program planting parameters on an external computing device (e.g., a computer, a smart-

phone, a PDA, a tablet, etc.), and upload the planting parameters to the vehicle's controller. The upload may occur via an ad-hoc network connection between the vehicle's controller and the external computing device, by providing removable storage media (e.g., SD Card, USB flash drive, etc.), or by downloading the parameters from a host server.

In some instances, the vehicle may be at least partially autonomous and capable of navigating a predefined planting pattern based on location feedback from the on-board GPS sensor and computerized control of the vehicle's throttle and steering mechanisms. In such an arrangement, the user provided parameters include a detailed planting pattern over a designated area of land, such as a predefined vehicle path. The user provides the planting pattern by inputting a vehicle path overlay on a screen representing the area of land to be planted through a user input. Alternatively, the user may select a template vehicle path from a set of predefined vehicle path templates (e.g., a template corresponding to rows forming a rectangle, a template corresponding to rows forming a square, a template corresponding to rows forming a triangle, etc.). Upon selection of the vehicle path template, the system analyzes the selection, analyzes the land to be planted, and processes a suggested vehicle path according to the template and the specific land parameters (e.g., the size of the land, the presence of any trees, the presence of any lakes, etc.). The suggested path maximizes the number of plants to be planted with the designated pattern on the land to be planted. The suggested vehicle path is presented to the user for verification. The user can then accept, reject, or modify the suggested vehicle path (e.g., change a portion of the suggested vehicle path). If the user accepts or modifies the suggested vehicle path, the system begins autonomous operation of the vehicle by tracking the location of the vehicle through the GPS receiver and making steering and throttle adjustments such that the vehicle remains on the vehicle path.

Further referring to FIG. 3, the user then navigates the vehicle through the planting pattern (step **302**). The vehicle path is displayed to the user such that the user can manually operate the vehicle to follow the path. Alternatively, if the vehicle is at least partially autonomous, the user instructs the vehicle to begin the planting and mapping process. As the vehicle follows the planting pattern, the vehicle is configured to detect soil characteristics and chart the detected soil characteristics on a map (step **303**). The vehicle includes a soil-penetrating radar unit (e.g., an insertion radar unit or a non-insertion radar unit). The radar unit detects the presence and depth of rocks, soil water, buried materials (e.g., materials buried to help retain water in the soil), delivery and/or drainage pipes, and any other objects within the soil or on the surface of the soil (i.e., extrinsic soil characteristics). The radar unit emits radio waves having a high-frequency waves (e.g., frequencies between 300 MHz and 3000 MHz, frequencies in excess of 3000 MHz, etc.) into the soil. The radar unit utilizes reflected wave data to create a series of high resolution scans of the soil (e.g., depth slices, time slices, three-dimensional image blocks, etc.), and to detect changes in soil characteristics (e.g., soil composition, soil density), the presence of soil water, the depth of the soil water, the amount of soil water, the presence and type of minerals present in soil, the presence and amount of humus in soil, and other soil characteristics (i.e., intrinsic soil characteristics). In an alternate configuration, the radar unit transmits unmodulated continuous-wave signals that are used to create a plan-view subsurface hologram of soil. In another alternate configuration, reflection seismology may be used to transmit acoustic waves through soil, and

reflected acoustic waves are analyzed to determine the composition of soil and the location of objects within soil. The radar unit provides feedback signals including data relating to the captured radar scans to the controller of the vehicle. While the radar unit scans the soil, a GPS receiver of the vehicle tracks the location of the vehicle and provides feedback signals to the controller indicating the location of the vehicle. The controller combines the radar scan information with information from the GPS receiver to create a map of the area traversed by the vehicle. The map created by the system is a collection of data points coupled to location information, that when processed, may be reproduced into a visual representation of the map (e.g., for viewing by an operator through a display) or a set of data and location points for use by a system controller (e.g., to properly determine plant or seed placement). The collected map data points may be stored in an R-tree data structure, an array data structure, or another suitable data structure. The map may be a three-dimensional map. The map has a high resolution such that a viewer or the vehicle can determine soil characteristics on a plant-by-plant basis (i.e., soil characteristics are charted at the location of each plant or seed placement) or on a sub-plant spacing basis (i.e., soil characteristics are charted even where no plants or seeds are to be planted).

As the vehicle navigates along the vehicle path, the vehicle plants seeds according to the programmed parameters (step 304). The controller of the vehicle sends instructions to a planting mechanism of the vehicle. The controller instructs the planting mechanism to place seeds on an individual seed basis (e.g., one-by-one) at designated locations. The designated locations are determined based on at least one of feedback received from the radar unit and the user provided planting parameters. The user may indicate that seeds are to be placed along the designated planting pattern regardless of detected soil characteristics. Alternatively, a user indicates that seeds are to be placed along a designated planting pattern only if satisfactory soil characteristics are detected. For example, a user may indicate that the controller is to instruct seed placement in soil containing a threshold level of nutrients, a threshold level of soil water, within a percolation distance of an irrigation system, at locations including subsurface materials placed for water retention, etc. In yet another alternative embodiment, a user indicates that seeds are to be placed along a designated planting pattern unless unsatisfactory soil characteristics are detected. For example, the user may not wish to place seeds in soil containing a threshold amount of rocks, in soil out of the percolation distance of an irrigation system, in soil lacking appropriate levels of minerals or humus, etc. The controller further instructs the planting mechanism to place the seeds according to a specified depth. The depth is set by the user as part of the provided parameters (provided in step 301). Alternatively, the controller may automatically adjust depth based on the type of seed being planted and/or the detected characteristics of the soil. The depth may be adjusted to avoid incidental contact a damage with equipment on the farm land, to avoid placement of seeds in undesirable areas, or to target certain depths to plant seeds within desirable areas (e.g., to avoid groupings of rocks, to avoid irrigation pipes, to target areas of soil water, etc.). Each seed's placement is individually charted on the map, or groupings of seeds are marked as being planted in a planting pattern on the map (e.g., the controller places an indication on the map pertaining to the location of a row of corn seeds).

After placement of the seeds is complete, the user indicates to the controller of the vehicle that the planting pattern

is finished (step 305). Alternatively, if the vehicle is at least partially autonomous, the vehicle indicates to the user that the pattern is complete. The user is then alerted to the presence of any unidentified objects detected within the soil (step 306). The controller of the vehicle is configured to analyze and identify objects beneath the surface of the soil based on the objects' radar signatures. In some situations, the controller may not be able to determine an object's identity. Accordingly, the controller alerts the user of the unidentified object's presence through a user output mechanism (e.g., a display) of the vehicle. The user can then input the identity of the object such that the object is marked and noted on the map through a user input mechanism of the vehicle (step 307). Alternatively, the user can ignore the alert and the object will remain on the map as unidentified or delete the unidentified object (e.g., if the user locates and removes the object from the soil). If no unidentified objects are detected, step 307 is skipped.

After any unidentified objects are identified or removed, the map may be saved and exported (step 308). The created map indicating the detected soil characteristics and plant seed placement is stored in memory associated with the controller of the system. The created map may be exported to an external computing device via a network interface or stored on removable storage media (e.g., SD memory card, MicroSD memory card, USB flash memory, etc.). The user can then access the map on an external computing device. For example, the map may be beneficial for predicting future harvest yields, for identifying areas of soil that require additional irrigation or fertilization, for identifying areas of soil containing an abnormal amount of undesirable characteristics that need to be fixed (e.g., rocks that need to be removed), and for use in future planting seasons.

Referring to FIG. 4A, a stand-alone mapping system 400 is shown according to an exemplary embodiment. System 400 includes vehicle 401 (shown as a pickup truck) and mapping unit 402. Mapping unit 402 is an attachment to vehicle 401 (e.g., configured to fit into a bed of a pickup truck, towed by another vehicle, etc.). Although mapping unit 402 is shown as an attachment to vehicle 401, it should be understood that a mapping unit 402 may be fully integrated into a vehicle. Mapping unit 402 includes GPS receiver 403 and a soil sensor, shown as ground penetrating radar unit 404 coupled to the housing of mapping unit 402. GPS receiver 403 receives signals from GPS satellites 405 and is configured to provide a feedback signal used to track the location of vehicle mapping unit 402. In alternative embodiments, other location sensors can be employed instead of, or in conjunction with, GPS. For instance, mapping unit 402 can include inertial navigation equipment, which is initialized with respect to a field reference site, and which may be updated during the mapping/planting session. In another embodiment, mapping unit 402 can interact with a local metrology system, e.g., RF or, optical navigation beacons set up in the vicinity of the field being traversed. Radar unit 404 utilizes ground penetrating radar to determine intrinsic and extrinsic characteristics of soil 406. Radar unit 404 is similar to radar unit 204 of system 200. Accordingly, radar unit 404 is a non-insertion soil-penetrating radar unit or an insertion radar unit and emits radar waves into soil 406. As the waves travel through soil 406, portions of the waves reflect back at different strengths depending on the composition of soil 406 and the presence and depths of objects within soil 406. Radar unit 404 is capable of detecting the presence and depth of objects and characteristics of soil 406. Radio waves transmitted by radar unit 404 are high-frequency waves (e.g., radio waves having frequencies

between 300 MHz and 3000 MHz, radio waves having frequencies in excess of 3000 MHz, etc.). Radar unit **404** may transmit unmodulated continuous-wave signals that are used to create a plan-view subsurface hologram of soil **406**. In another alternate configuration, reflection seismology is used to transmit acoustic waves through soil **406**, and reflected acoustic waves are analyzed to determine the composition of soil **406** and the location of objects within soil **406**. Radar unit **403** provides feedback signals that include data pertaining to the detected soil characteristics to controller **410** (shown in FIG. 4B). Mapping unit **402** is generally configured to detect characteristics of soil **406** through radar unit **404** and generate a map of soil **406** by pairing location data from GPS receiver **403** with soil characteristic data from radar unit **404**. The map created by system **400** is a collection of data points coupled to location information, that when processed, may be reproduced into a visual representation of the map (e.g., for viewing by an operator through a display) or a set of data and location points for use by another system (e.g., to determine proper plant or seed placement). The collected map data points may be stored in an R-tree data structure, an array data structure, or another suitable data structure. The map may be a three-dimensional map.

Referring to FIG. 4B, a block diagram of controller **410** is shown in accordance with an exemplary embodiment. Controller **410** controls the operation of mapping unit **402**. Controller **410** includes processing circuit **411**. Processing circuit **411** includes processor **412** and memory **413**. Processing circuit **411** communicates with GPS receiver **403**, radar unit **404**, user input **414**, user output **415**, and network interface **416**. Controller **410** is powered by power supply **417**. Memory **413** stores necessary programming modules that when executed by processor **412**, control the operation of mapping unit **402** and the creation of a three-dimensional map of soil **406** based on settings, parameters, and feedback received through user input **414**, GPS receiver **403**, and radar unit **404**. User input **414** is configured to provide an interface for a user to input desired mapping parameters for system **400** (e.g., size of area to be mapped, type of soil to be mapped, sensitivity level of radar unit **404**, etc.). User input **414** includes a series of knobs, wheels, multi-position switches, a keyboard, a mouse, or any combination thereof. User output **415** includes a display. User output **415** optionally includes audio output (e.g., for emitting beeps and tones) and indicator lights (e.g., LEDs for indicating system **400** statuses and alerts). It is contemplated that user input **414** and user output **415** are combined into a touchscreen display that displays an interactive graphical user interface such that a user of system **400** can program desired settings and parameters through interaction with the display. Network interface **416** is configured to communicate with an external server or an external computing device. Network interface includes at least one of an Ethernet interface and a wireless transceiver (e.g., Bluetooth, 802.11, etc.). An external computing device remote from controller **410** can provide an interface for a user to input desired mapping parameters for system **400** and to control system **400** (e.g., a portable computing device located in the passenger compartment of vehicle **401**). In this arrangement, the external computing device transmits user provided input to controller **410** through network interface **416** and receives system **400** output transmitted by network interface **416**. Power supply **417** may receive power from any suitable source (e.g., a rechargeable battery, a non-rechargeable battery, a generator onboard vehicle **401**, an electronic alternator running off of the engine that powers vehicle **401**). Power supply **417** may

provide operational power to all components of mapping unit **402**, including GPS receiver **403**, radar unit **404**, user input **414**, and user output **415**.

As in system **200**, controller **410** of system **400** is configured to process feedback signals from GPS receiver **403** and radar unit **404** into a detailed map of soil **406**. As vehicle **401** moves along soil **406**, controller **410** receives feedback signals from radar unit **404** that indicate characteristics of soil **406** and GPS receiver **403** that indicate the location of vehicle **401**. Controller **410** is configured to process these feedback signals into a detailed three-dimensional map of soil **406**. The three-dimensional map includes location specific information pertaining to the composition of soil **406** (e.g., chemical composition, moisture amount, density, humus presence, etc.), the presence of objects (e.g., buried rocks, pipes, etc.), and other information pertaining to soil **406** up to a specified depth beneath the surface of soil **406**. The depth parameter of the three-dimensional map (e.g., one foot beneath the surface, two feet beneath the surface, etc.) may be a user provided parameter. Controller **410** is configured to analyze feedback signals from radar unit **404** to locate and identify objects underneath the surface of soil **406** (e.g., rocks, soil water, delivery pipes, etc.). Detected objects are identified by radar signatures. Controller **410** is configured to automatically determine the identity of objects beneath the surface of soil **406**. Alternatively, objects are manually identified and updated on the map through user interaction. For example, controller **410** may not be able to ascertain the identity of a detected object or characteristic. Accordingly, the user may be alerted of an unidentified object's location such that the user can manually identify the object, clear the object from the map, or leave the object as unidentified on the map. The created map can be exported to an external computing device via network interface **416** or be stored on removable storage media (e.g., SD memory card, MicroSD memory card, USB flash memory, etc.). The user can then reference the created map for assistance during future soil processing operations (e.g., planting, harvesting, tilling, object extraction, etc.).

Referring to FIG. 4C, a method **420** of operating a stand-alone soil mapping system (e.g., system **400**) is shown. The user programs operating parameters into the system (step **421**). The operating parameters may include a desired map depth (e.g., a designated number of feet or meters beneath the surface of the soil) and a map resolution indication. In certain situations, it is desirable to have a high resolution map created (e.g., a map indicating detected objects and soil characteristic variances for every inch of lateral or vertical travel). For example, a high resolution map is desirable if the map will be used in a precision planting operation that requires precise location information for detected intrinsic and extrinsic soil characteristics. If a high resolution is desired, the radar unit of the system utilizes high-frequency radio waves during the mapping process (e.g., in excess of 1000 MHz). In other situations, it may be desirable to have a low resolution map created (e.g., a map indicating the presence and location of large objects beneath the surface of the soil, but not other soil characteristics such as soil composition). For example, a low resolution map may be desirable if the map will only be needed to identify large objects located under the soil's surface. If a low resolution is desired, the radar unit of the system utilizes low-frequency radio waves during the mapping process (e.g., less than 1000 MHz). In some configurations, the vehicle is at least partially autonomous and is capable of navigating a predefined mapping pattern based on location feedback from the on-board GPS sensor and computerized

control of the vehicle's throttle and steering mechanisms. The operating parameters may include a detailed mapping pattern over a designated area of land, such as a predefined vehicle path. The user may provide the mapping pattern by drawing a vehicle path overlay on a screen representing the area of land to be mapped. Alternatively, the user may select a plot of land from a mapping service (e.g., MapQuest, Google Maps, etc.), and the controller of the system automatically computes a suggested vehicle path for complete mapping of the plot of land. The suggested vehicle path is presented to the user for verification. The user can then accept, reject, or modify (e.g., change a portion of the suggested vehicle path) the suggested vehicle path. If the user accepts or modifies the suggested vehicle path, the system is ready to begin autonomous operation of the vehicle by tracking the location of the vehicle through the GPS receiver and making steering and throttle adjustments such that the vehicle remains on the vehicle path.

The user begins navigating the vehicle over the area of land to be mapped (e.g., by following the suggested vehicle path) (step 422). Alternatively, if the vehicle is at least partially autonomous, the user instructs the vehicle to begin the mapping process. As the vehicle follows the mapping pattern, the vehicle is configured to detect soil characteristics and chart the detected soil characteristics on a map (step 423). The vehicle includes a soil-penetrating radar unit. The radar unit is an insertion radar unit or a non-insertion radar unit. The radar unit detects the presence and depth of rocks, soil water, buried delivery and/or drainage pipes, and any other objects within the soil. The radar unit emits high-frequency radio waves (e.g., frequencies between 300 MHz and 3000 MHz, frequencies in excess of 3000 MHz, etc.) into the soil. The radar unit captures a series of high resolution scans of the soil (e.g., depth slices, time slices, three-dimensional image blocks, etc.), and to detect soil characteristics (e.g., soil composition, soil density), the presence of soil water, the depth of the soil water, the amount of soil water, the presence and type of minerals present in soil, the presence and amount of humus in soil, and other soil characteristics. In an alternate configuration, the radar unit transmits unmodulated continuous-wave signals that are used to create a plan-view subsurface hologram of soil. In another alternate configuration, reflection seismology is used to transmit acoustic waves through soil, and reflected acoustic waves are analyzed to determine the composition of soil and the location of objects within soil. The radar unit provides feedback signals data relating to captured radar scans to the controller of the vehicle. The controller combines the radar scan information with information from the GPS receiver to create a dimensional map of the area traversed by the vehicle. The map created by the system is a collection of data points coupled to location information, that when processed, may be reproduced into a visual representation of the map (e.g., for viewing by an operator through a display) or a set of data and location points for use by a system controller in further processing (e.g., the controller of a system may process the map data to instruct plant or seed placement). The collected map data points may be stored in an R-tree data structure, an array data structure, or another suitable data structure. The map may be a three-dimensional map.

Further referring to FIG. 4C, the user indicates to the vehicle that the soil to be mapped has been mapped and stops the mapping process (step 424). Alternatively, in the case of an at least partially autonomous vehicle, the vehicle indicates to the user that the pattern is complete. Upon completion, the user is alerted to the presence of any

unidentified objects detected within the soil (step 425). The controller of the vehicle is configured to analyze and identify objects beneath the surface of the soil based on the objects' radar signatures. The controller may not be able to determine every detected object's identity. Accordingly, the controller alerts the user of the vehicle to any unidentified object's presence. The user can then input the identity of the object such that the object is marked and noted on the map (step 426). Alternatively, the user can ignore the alert (i.e., the object remains on the map as an unidentified object) or deletes the unidentified object from the map. If no unidentified objects are detected, step 425 is skipped.

After the unidentified objects are identified, ignored, or removed, the map is saved and exported (step 427). The created map indicating the detected soil characteristics is stored in memory associated with the controller of the system. The user may wish to save the map for later viewing and analysis. For example, the map may be beneficial for plotting future planting operations, for identifying areas of soil that require additional irrigation or fertilization, and for identifying areas of soil containing an abnormal amount of undesirable characteristics that need to be fixed (e.g., rocks that need to be removed). Accordingly, the created map can be exported to an external computing device via a network interface or can be stored on removable storage media (e.g., SD memory card, MicroSD memory card, USB flash memory, etc.).

Referring to FIG. 5A, a stand-alone precision planting vehicle 500 is shown in accordance with an exemplary embodiment. Vehicle 500 includes GPS receiver 501 and planting device 502. GPS receiver 501 receives signals from GPS satellites 503 and is configured to provide a feedback signal used to track the location of vehicle 500. Planting device 502 is configured to dig a hole or a trench in soil 504, place seeds 505, and cover the seeds with displaced soil material. Planting device 502 is depth adjustable such that seeds can be buried at different depths within soil 504. Planting device 502 is controllable such that seeds can be placed at various densities (e.g., at a designated number of seeds per area planted, on a seed-by-seed basis, etc.). Vehicle 500 is generally configured to precisely plant seeds 505 based on location data received from GPS receiver 501, provided planting parameters, and soil characteristic data received from a provided map of soil 504. The provided map is a collection of data points coupled to location information, that when processed, may be reproduced into a visual representation of the map (e.g., for viewing by an operator through a display) or a set of data and location points for further processing (e.g., the map data may be processed to determine proper seed placement). The collected map data points may be stored in an R-tree data structure, an array data structure, or another suitable data structure. The map may be a three-dimensional map.

Referring to FIG. 5B, a block diagram of controller 510 is shown. Controller 510 generally controls the operation of vehicle 500. Controller 510 includes processing circuit 511. Processing circuit 511 includes processor 512 and memory 513. Processing circuit 511 communicates with GPS receiver 501, planting device 502, user input 514, user output 515, and network interface 516. Controller 510 is powered by power supply 517. Memory 513 stores necessary programming modules that when executed by processor 512, control the operation of vehicle 500, including the operation of planting device 502, receiving user input, providing user output, communications over network interface 516, and updating any provided map data. User input 514 is configured to provide an interface for a user to input

desired planting parameters for vehicle **500** (e.g., type of plant seed being placed, desired soil characteristics for planting, density of planting, planting pattern, etc.). User input **514** includes a series of knobs, wheels, multi-position switches, a keyboard, a mouse, or any combination thereof. User output **515** includes a display. User output **515** optionally includes audio output (e.g., for emitting beeps and tones) and/or indicator lights (e.g., LEDs for indicating vehicle **500** statuses and alerts). It is contemplated that user input **514** and user output **515** are combined into a touch-screen display such that a user of vehicle **500** can program desired settings and parameters through interaction with a graphical user interface presented on the display. Network interface **516** is configured to communicate with an external server or an external computing device. Network interface **516** includes at least one of an Ethernet interface and a wireless transceiver (e.g., Bluetooth, 802.11, etc.). Power supply **517** provides power to controller **510**. Power supply **517** may provide power to all components of vehicle **500** (e.g., GPS receiver **501**, planting device **502**, etc.). Power supply **517** may receive power from any suitable source (e.g., a rechargeable battery, a non-rechargeable battery, a generator onboard vehicle **500**, an electronic alternator running off of the engine that powers vehicle **500**, etc.).

Controller **510** instructs planting device **502** to place seeds in soil **504** based on processed feedback signals from GPS receiver **501** and provided planting parameters. As vehicle **500** moves along soil **504**, controller processes location feedback signals from GPS receiver **501** to track the location of vehicle **500**. Controller **510** compares the location of vehicle **500** to provided map data. The map data pertains to a three-dimensional map of soil **504** including location specific information pertaining to the composition of soil **504**, (e.g., chemical composition, moisture amount, density, humus presence, etc.), the presence of objects (e.g., buried rocks, pipes, etc.), and other information pertaining to soil **504** up to a certain depth beneath the surface of soil **206**. The map data may have been initially created through the use of a soil mapping system (e.g., system **400**). The map is received into memory **513** from an external computing device or server through network interface **516** or from removable storage media (e.g., SD memory card, MicroSD memory card, USB flash memory, etc.) provided by the user. As vehicle **500** moves along soil **504**, controller **510** instructs planting device **502** to plant seeds **505** into soil **504** at specific locations based on provided planting parameters and soil conditions contained within map data. For example, controller **510** is configured to adjust planting device **502** such that seeds are placed in desirable locations (e.g., nutrient rich locations, locations with soil water, locations within water percolation distance from underground irrigation systems, locations having subsurface materials placed for water retention, etc.) and are not placed in undesirable locations (e.g., locations with a high density of rocks, locations with little or no soil water, locations out of water percolation distance from underground irrigation systems, etc.). Additionally, planting device **502** is adjusted such that any desirable underground objects (e.g., buried irrigation pipes) are not damaged. Upon the successful placement of a seed by planting device **502**, controller **510** updates the map of soil **504** to indicate the placement of the seed. The modified map may be saved and exported to an external computing device via network interface **516** or stored on removable storage media (e.g., SD memory card, MicroSD memory card, USB flash memory, etc.).

Referring to FIG. **5C**, a method **520** of precision planting through a planting system (e.g., vehicle **500**) based on

provided planting parameters and map data. The user of the system provides map data pertaining to an area of soil to be planted (step **521**). The map data relates to a three-dimensional map of an area of soil to be planted and includes location specific information pertaining to the composition of the soil, (e.g., chemical composition, moisture composition, density, humus presence, etc.), the presence of objects (e.g., buried rocks, pipes, etc.), and any other information pertaining to soil. The map includes this information up to a specified depth beneath the surface of the soil. The map data is a collection of data points coupled to location information, that when processed, may be reproduced into a visual representation of the map (e.g., for viewing by an operator through a display) or further processed by a controller of the system (e.g., to determine proper seed placement). The collected map data points may be stored in an R-tree data structure, an array data structure, or another suitable data structure. The map may be a three-dimensional map. The map data may have been created through the use of a soil mapping system (e.g., system **400**). The map data is provided to a controller of the system from an external computing device or server through network interface of the controller or with a removable storage media (e.g., SD memory card, MicroSD memory card, USB flash memory, etc.).

The user programs planting parameters to the precision planting vehicle (step **522**). The planting parameters include any of the type of plant seed being placed, desired placement characteristics (e.g., depth beneath the surface, proximity to water supply, soil composition), seed placement density, future processing strategy (e.g., fertilizing strategy, watering strategy, target harvest date, etc.), seed placement strategy (e.g., rows, circles, etc.), and any other desired planting parameter. The planting parameters may include threshold levels of detected soil characteristics to avoid planting seeds. For example, a user may indicate that seeds are not to be placed in soil containing a threshold percentage or number of rocks. Further, the planting parameters may include threshold levels of detected soil characteristics for seed placement. For example, a user may indicate that seeds are to be placed in soil containing a threshold level of soil water. Further, the user can indicate seeds are to be placed at designated detected locations (e.g., within percolation distance of irrigation systems, locations having subsurface materials placed for water retention,) and are not to be placed in designated detected locations (e.g., on top of a buried pipe). The planting parameters may include a subset of the provided map data indicating that only a portion is to be planted. The user provides the planting parameters to the system through a user input. The user input includes a series of knobs, wheels, multi-position switches, a keyboard, a mouse, a touchscreen display, or any combination thereof. Alternatively, a user programs planting parameters on an external computing device (e.g., a computer, a smartphone, a PDA, a tablet, etc.) and uploads the planting parameters to the controller. The upload may occur via an ad-hoc network connection between the controller and the external computing device, via removable storage media (e.g., SD Card, USB flash drive, etc.), or via downloading the parameters from a host server. Further, the system may automatically determine planting parameters based on a user selection of a planting parameter template (e.g., corn rows) and a designated an area of land to be planted. The template includes preset planting parameters (e.g., type seed, seed placement depth, proximity to water supply information, desired soil

composition, seed placement density, seed placement strategy, etc.). The user can modify the preset planting parameters of the template.

The controller of the system then processes a planting pattern (step 523). The planting pattern is created through processing of the provided planting parameters and provided map data. The controller of the system determines where seeds should be placed according to the planting parameters (e.g., in rows, in areas having high nutrient counts, within percolation distance from a water supply, etc.). The planting pattern maximizes the number of plants or seeds to be planted with the designated pattern on the land to be planted. The controller determines a vehicle path to accomplish the planting pattern. The vehicle path minimizes distance traveled by the vehicle and/or planting time. In some instances, the planting vehicle may be at least partially autonomous and capable of navigating a predefined planting pattern based on location feedback from the on-board GPS sensor and computerized control of the vehicle's throttle and steering mechanisms. Accordingly, the user may provide vehicle operating parameters (e.g., maximum speed) and the controller's processed vehicle path includes vehicle operating instructions (e.g., speeds, where to turn, etc.). In such an arrangement, the controller's processed vehicle path is presented to the user prior to operation such that the user can accept, reject, or modify the suggested vehicle path. For example, the user may wish to avoid planting in certain areas and modify the suggested vehicle path accordingly. Alternatively, the user may provide a specified planting pattern and vehicle path during step 522 (e.g., by drawing a vehicle path over the provided map data via a user input and by indicating where seeds are to be placed or how controller is to determine where seeds are to be placed).

Further referring to FIG. 5C., the user navigates the vehicle through the planting pattern (step 524). The user is presented the processed planting pattern and vehicle path on a display screen of the vehicle. The user operates the vehicle such that the vehicle approximately traces the path displayed on the screen of the vehicle. If the vehicle is at least partially autonomous, the user instructs the vehicle to begin the planting process. In either case, as the vehicle follows the planting pattern, the vehicle is configured to plant seeds in the soil according to the processed planting pattern. The controller of the planting system communicates with a planting mechanism of the vehicle and instructs the planting mechanism to place seeds when the vehicle's determined location matches a location of the map data where a seed is to be placed. The vehicle's location is determined based on feedback received from a location sensor (e.g., a GPS receiver). The controller is further configured to adjust parameters of the planting mechanism (e.g., the seed placement depth, the seed placement density, etc.) based on the processed planting pattern. As seeds are placed into the soil, the map data is updated to include the location of the seed (step 525)

After the planting pattern is completed, the updated map may be saved to memory of the controller of the vehicle and exported (step 526). The updated map data includes previously detected soil characteristics and plant seed placement. The map data may be used for future soil processing (e.g., fertilization, watering, harvesting, tilling, etc.). Accordingly, the updated map data may be exported to an external computing device via a network interface of the controller or can be stored on removable storage media (e.g., SD memory card, MicroSD memory card, USB flash memory, etc.). The user can then access the map on an external computing device.

Ground mapping systems are not limited to vehicle based systems (e.g., system 200 and system 400). Referring to FIG. 6A, a stationary ground penetrating radar system 600 is shown in accordance with an exemplary embodiment. System 600 includes radar unit 601 mounted on tower 602. Radar unit 601 is configured to detect intrinsic and extrinsic characteristics of soil 603 in a similar manner as radar unit 203 of system 200 and radar unit 404 of system 400. Accordingly, radar unit 601 utilizes ground penetrating radar to determine characteristics of soil 603. As transmitted radar waves travel through soil 603, portions of the wave are reflected back at different strengths depending on the composition of soil 603 and the presence and depths of objects within soil 603. The radio waves have frequencies between 300 MHz and 3000 MHz or in excess of 3000 MHz. System 600 can detect changes in soil characteristics (e.g., soil composition, soil density), the presence of soil water, the depth of the soil water, the amount of soil water, the presence and type of minerals present in soil 603, the presence and amount of humus in soil 603, and other soil characteristics. In an alternate configuration, radar unit 601 transmits unmodulated continuous-wave signals that are used to create a plan-view subsurface hologram of soil 603. In another alternate configuration, reflection seismology is used to transmit acoustic waves through soil 603, and reflected acoustic waves are analyzed to determine the composition of soil 603 and the location of objects within soil 603. Feedback signals from radar unit 601 are provided to a controller similar to controller including a processing circuit having a processor and memory (similar to controller 220 and controller 410).

Radar unit 601 of system 600 is stationary, and therefore has a limited and relatively static area of detection (see circles 604 of FIG. 6B). Referring to FIG. 6B, an exemplary layout of soil 603 is shown. To achieve proper coverage of an area of soil 603, a user can install multiple systems to cover the area. The areas of detection may be made to overlap to ensure maximum coverage. Each system 600 reports detected soil characteristic data from the respective area of detection on a regular schedule or on demand. The reported soil characteristics are sent to a central controller or computing device. Alternatively, each system stores detected data, and a user manually collects the data (e.g., by downloading data through a network interface in communication with the individual controller of each system 600, by downloading data from each system onto a removable storage medium, etc.).

In addition to generating pre-planting operation map data (as performed in system 400), a grouping of system 600 towers (as shown in FIG. 6B) can advantageously provide regularly updating soil characteristics. For example, it is contemplated that a system of watering sprinklers can be controlled by a controller that receives regular feedback indicating the moisture content of soil 603. Accordingly, sprinklers are activated only when the detected soil moisture level falls below a designated threshold value. Such a watering system may reduce the amount of water used when compared to sprinkler system activated according to a schedule. Further, as an additional example, it is contemplated that a user can configure alerts or notifications as to when nutrients in soil 603 and pesticides in soil 603 are depleted, and the precise locations of the depletions. Accordingly, the user is alerted when additional fertilizer or pesticides need to be placed.

Referring to FIG. 7, an air-based soil characteristic detection system 700 is shown in accordance with an exemplary embodiment. System 700 includes airplane 701 having radar

unit **702** and GPS receiver **703**. Although FIG. 7 is drawn as using airplane **701**, any suitable aircraft configured to detect and map intrinsic and extrinsic soil characteristics (e.g., a helicopter, a plane, a balloon, a flying drone, etc.) may be used as part of an air-based soil characteristic detection system. System **700** functions in a similar manner to system **200** and system **400**. GPS receiver **703** receives signals from GPS satellites **203** enabling a controller of system **700** to accurately track the location of airplane **701**. The controller of system **700** is similar to controller **220** and controller **410**. The controller of system **700** includes at least a processing circuit having a processor and memory. Radar unit **702** utilizes ground penetrating radar to determine characteristics of soil **705**. As in system **200** and system **400**, the controller of system **700** is configured to process feedback signals from GPS receiver **703** and radar unit **702** into a detailed map of soil **705**. As airplane **701** flies over soil **705**, the controller receives feedback signals from radar unit **702** and GPS receiver **703**.

The controller is configured to process the received feedback signals to create a detailed map of soil **705**. The map created by system **700** is a collection of data points coupled to location information, that when processed, may be reproduced into a visual representation of the map (e.g., for viewing by an operator through a display) or a set of data and location points for further processing by a system controller (e.g., to determine proper seed placement). The collected map data points may be stored in an R-tree data structure, an array data structure, or another suitable data structure. The map may be a three-dimensional map. The three-dimensional map includes location specific information pertaining to the composition of soil **705** (e.g., chemical composition, moisture composition, density, humus presence, etc.), the presence of objects (e.g., buried rocks, pipes, etc.), and other information pertaining to soil **705** up to a certain depth beneath the surface of soil **705**. The depth parameter of the three-dimensional map (e.g., one foot beneath the surface, two feet beneath the surface, etc.) may be a user provided parameter. The controller is configured to analyze feedback signals from radar unit **702** to locate and identify objects underneath the surface of soil **705** (e.g., rocks, soil water, delivery pipes, etc.). Detected objects are identified by radar signatures in the same manner as described above with respect to system **200** and system **400**. The created map can be exported to an external computing device via a network interface of the controller or stored on removable storage media (e.g., SD memory card, MicroSD memory card, USB flash memory, etc.). The user can then reference the created map for assistance during future soil processing operations (e.g., planting, harvesting, tilling, object extraction, etc.).

Airplane **701** further includes spraying device **706**. Spraying device **706** is configured to spray liquids (e.g., chemicals, water, pesticides, fertilizer, etc.) onto soil **705** as airplane **701** flies over soil **705**. It is contemplated that the controller of system **700** is configured to spray the liquids at precise locations based on detected soil characteristics. For example, if the controller determines that an area of soil requires spraying of a chemical based on feedback from radar unit **702**, the controller can activate spraying device **706** such that the sprayed chemical coats the target area of land. In order to properly determine where the sprayed chemical will land, controller receives feedback from additional sensors on airplane **701** (e.g., altitude sensor, wind direction sensor, wind speed sensor, air speed indicator, etc.). After spraying the liquids, the controller further updates the created map data to indicate that the liquid was sprayed at the specific location.

The above systems and methods can be operated as part of a business. The business offers soil mapping services to customers. Customers can purchase individual maps of an area of soil. Alternatively, customers can subscribe to recurring maps (e.g., a new map every growing season, a new map every month, etc.). The maps can be used for soil operations (e.g., planting operations, harvesting operations, tilling operations, etc.). Additionally, the maps can be used to assist with construction and placement of irrigation systems. Further, customers can purchase precision planting of fields. The business can use detected soil characteristics to maximize crop yield and minimize costs (e.g., fertilizer costs, pesticide costs, watering costs) through strategic placement. The business may further lease soil mapping and/or precision planting equipment to its customers. All of the above mentioned services are provided to customers for a fee.

Although the above systems and methods refer to the planting of seeds, it should be understood that the above systems and methods may be used to plant plants at various stages in development. Accordingly, instead of a seed planting mechanism (e.g. planting device **202** or planting device **502**), a plant planting mechanism can place plants of various levels of plant maturity (e.g., seedlings, juvenile plants, adult plants, etc.) in specified and precise locations.

The construction and arrangement of the systems and methods as shown in the exemplary embodiments are illustrative only. Although only a few embodiments of the present disclosure have been described in detail, those skilled in the art who review this disclosure will readily appreciate that many modifications are possible (e.g., variations in sizes, dimensions, structures, shapes and proportions of the various elements, values of parameters, mounting arrangements, use of materials, colors, orientations, etc.) without materially departing from the novel teachings and advantages of the subject matter recited. For example, elements shown as integrally formed may be constructed of multiple parts or elements. The elements and/or assemblies of the enclosure may be constructed from any of a wide variety of materials that provide sufficient strength or durability, and in any of a wide variety of colors, textures, and combinations. Additionally, in the subject description, the word “exemplary” is used to mean serving as an example, instance, or illustration. Any embodiment or design described herein as “exemplary” is not necessarily to be construed as preferred or advantageous over other embodiments or designs. Rather, use of the word “exemplary” is intended to present concepts in a concrete manner. Accordingly, all such modifications are intended to be included within the scope of the present inventions. The order or sequence of any process or method steps may be varied or re-sequenced according to alternative embodiments. Any means-plus-function clause is intended to cover the structures described herein as performing the recited function and not only structural equivalents but also equivalent structures. Other substitutions, modifications, changes, and omissions may be made in the design, operating conditions, and arrangement of the preferred and other exemplary embodiments without departing from scope of the present disclosure or from the spirit of the appended claims.

The present disclosure contemplates methods, systems, and program products on any machine-readable media for accomplishing various operations. The embodiments of the present disclosure may be implemented using existing computer processors, or by a special purpose computer processor for an appropriate system, incorporated for this or another purpose, or by a hardwired system. Embodiments within the

scope of the present disclosure include program products comprising machine-readable media for carrying or having machine-executable instructions or data structures stored thereon. Such machine-readable media can be any available media that can be accessed by a general purpose or special purpose computer or other machine with a processor. By way of example, such machine-readable media can comprise RAM, ROM, EPROM, EEPROM, CD-ROM or other optical disk storage, magnetic disk storage or other magnetic storage devices, or any other medium which can be used to carry or store desired program code in the form of machine-executable instructions or data structures, and which can be accessed by a general purpose or special purpose computer or other machine with a processor. When information is transferred or provided over a network or another communications connection (either hardwired, wireless, or a combination of hardwired or wireless) to a machine, the machine properly views the connection as a machine-readable medium. Thus, any such connection is properly termed a machine-readable medium. Combinations of the above are also included within the scope of machine-readable media. Machine-executable instructions include, for example, instructions and data which cause a general purpose computer, special purpose computer, or special purpose processing machines to perform a certain function or group of functions.

Although the figures may show a specific order of method steps, the order of the steps may differ from what is depicted. Also two or more steps may be performed concurrently or with partial concurrence. Such variation will depend on the software and hardware systems chosen and on designer choice. All such variations are within the scope of the disclosure. Likewise, software implementations could be accomplished with standard programming techniques with rule based logic and other logic to accomplish the various connection steps, processing steps, comparison steps, and decision steps.

What is claimed is:

1. An apparatus comprising:

a ground penetrating radar configured to scan soil material beneath a land-traversing vehicle up to a designated depth, the scan including receiving a radar return signal responsive to an intrinsic characteristic of the soil material;

a controller including a processing circuit configured to (i) determine a suitability of the soil material at a specific location for a particular type of seed or plant in response to the received radar return signal responsive to the intrinsic characteristic of the soil material; and

(ii) select an optimal depth or density for the particular type of seed or plant in response to the determined suitability; and

a planting device configured to plant in the soil material at the specific location the particular type of seed or plant using the selected optimal depth or density, wherein the ground penetrating radar, the controller, and the planting device are all configured to be carried by the land-traversing vehicle.

2. The apparatus of claim 1, wherein the intrinsic soil characteristic comprises at least one of a composition of the soil material, a moisture property of the soil material, a presence of humus in the soil material, a density of the soil material, or a soil material porosity.

3. The apparatus of claim 1, wherein the determine a suitability of the soil includes determine a depth of water beneath the surface of the soil material.

4. The apparatus of claim 1, wherein determine a suitability of the soil includes determine a quantity of water beneath the surface of the soil material.

5. The apparatus of claim 1, wherein the ground penetrating radar unit is a non-insertion ground penetrating radar unit.

6. The apparatus of claim 1, wherein the ground penetrating radar unit is an insertion ground penetrating radar unit.

7. The apparatus of claim 1, wherein the processing circuit is further configured to (iii) create a map indicative of at least two specific locations, the map including the respective selected optimal depth or density of the planting of the particular seed or plant of each specific location of the at least two locations.

8. The apparatus of claim 7, wherein the map includes a correlation of a GPS-based location with each specific location of the at least two locations.

9. The apparatus of claim 8, wherein the apparatus includes a GPS-based location sensor.

10. The apparatus of claim 1, wherein the radar return signal is further responsive to an extrinsic characteristic of the soil material.

11. The apparatus of claim 1, wherein the radar return signal is further responsive to a presence of an irrigation system below the surface of the soil material.

12. The apparatus of claim 1, further comprising the land-traversing vehicle.

13. A method implemented in a land-traversing vehicle, the method comprising:

scanning soil material beneath the land-traversing vehicle up to a designated depth with a ground penetrating radar, the scanning including receiving a radar return signal responsive to an intrinsic characteristic of the soil material;

determining a suitability of the soil material at a specific location for a particular type of seed or plant in response to the received radar return signal;

selecting an optimal depth or density for the particular type of seed or plant in response to the determined suitability; and

planting in the soil material at the specific location the particular type of seed or plant using the selected optimal depth or density.

14. The method of claim 13, further comprising traveling over the soil material in the land-traversing vehicle.

15. A soil mapping system comprising:

a ground penetrating radar configured to scan soil material beneath a land-traversing vehicle up to a designated depth, the scan including receiving a radar return signal responsive to an intrinsic characteristic of the soil material;

a location sensor configured to output a signal tracking a location of the ground penetrating radar;

a controller including a processing circuit configured to

(i) determine a characteristic of the soil material in response to the received radar return signal responsive to the intrinsic characteristic of the soil material;

(ii) determine a location of the determined soil characteristic in response to the signal tracking the location of the ground penetrating radar;

(iii) create a map of the soil material responsive to a correlation of the determined soil characteristic and the determined location of the soil characteristic; and

(iv) store the map of the soil material.

16. The apparatus of claim 15, wherein the processing circuit is further configured to (v) output the map of the soil material.

23

17. The apparatus of claim 15, wherein the (i) determine a soil characteristic includes determine a depth of a water property of the soil material.

18. The apparatus of claim 15, wherein the radar return signal is responsive to an intrinsic and an extrinsic characteristic of the soil material. 5

19. The apparatus of claim 18, wherein the extrinsic characteristic includes a presence of moisture in the soil material.

20. The apparatus of claim 18, wherein the extrinsic characteristic includes a depth of the soil material. 10

21. The apparatus of claim 18, wherein the extrinsic characteristic includes a presence of an object beneath the surface of the soil material.

22. The apparatus of claim 15, wherein the soil characteristic includes a soil characteristic facilitating growing of a seed or plant. 15

23. The apparatus of claim 15, wherein the soil characteristic includes a soil characteristic facilitating watering of a seed or plant. 20

24. The apparatus of claim 15, wherein the soil map includes a three dimensional map of the soil material.

25. The apparatus of claim 15, wherein the location sensor is a GPS receiver.

26. The apparatus of claim 15, wherein the controller exports the map to an external computing device through a network interface. 25

27. A method comprising:
scanning soil material beneath a land-traversing vehicle up to a designated depth using a ground penetrating radar, the scan including receiving a radar return signal responsive to an intrinsic characteristic of the soil material; 30

24

tracking a location of the ground penetrating radar;
determining a characteristic of the soil material in response to the received radar return signal;
determining a location of the determined soil characteristic in response to the signal tracking the location of the ground penetrating radar;
creating a map of the soil material responsive to a correlation of the determined soil characteristic and the determined location of the soil characteristic; and
storing the map of the soil material.

28. The method of claim 27, further comprising outputting the map of the soil material.

29. A soil mapping system comprising:
means for scanning soil material beneath a land-traversing vehicle up to a designated depth using a ground penetrating radar, the scan including receiving a radar return signal responsive to an intrinsic characteristic of the soil material;
means for tracking a location of the ground penetrating radar;
means for determining a characteristic of the soil material in response to the received radar return signal;
means for determining a location of the determined soil characteristic in response to the signal tracking the location of the ground penetrating radar;
means for creating a map of the soil material responsive to a correlation of the determined soil characteristic and the determined location of the soil characteristic; and
means for storing the map of the soil material.

30. The system of claim 29, further comprising means for outputting the map of the soil material.

* * * * *