



(12) **United States Patent**
Ross et al.

(10) **Patent No.:** **US 10,036,642 B2**
(45) **Date of Patent:** ***Jul. 31, 2018**

(54) **AUTOMATED VEHICLE COMMUNICATIONS SYSTEM**

(71) Applicant: **Uber Technologies, Inc.**, San Francisco, CA (US)
(72) Inventors: **William Ross**, San Francisco, CA (US); **Michael Aitken**, San Francisco, CA (US)

(73) Assignee: **Uber Technologies, Inc.**, San Francisco, CA (US)

(*) Notice: Subject to any disclaimer, the term of this patent is extended or adjusted under 35 U.S.C. 154(b) by 0 days.
This patent is subject to a terminal disclaimer.

(21) Appl. No.: **14/963,007**

(22) Filed: **Dec. 8, 2015**

(65) **Prior Publication Data**

US 2017/0162057 A1 Jun. 8, 2017

(51) **Int. Cl.**
G01C 21/34 (2006.01)
H04W 48/18 (2009.01)
(Continued)

(52) **U.S. Cl.**
CPC **G01C 21/3438** (2013.01); **B60W 10/18** (2013.01); **B60W 10/20** (2013.01);
(Continued)

(58) **Field of Classification Search**
CPC H04W 36/06; H04W 36/08; H04W 36/12; H04W 16/28; H04W 48/06; H04W 48/18;
(Continued)

(56) **References Cited**

U.S. PATENT DOCUMENTS

6,339,745 B1 1/2002 Novik
6,424,638 B1 7/2002 Ray
(Continued)

FOREIGN PATENT DOCUMENTS

DE 10118188 10/2002
EP 2709207 A2 * 3/2014 H01Q 3/01

OTHER PUBLICATIONS

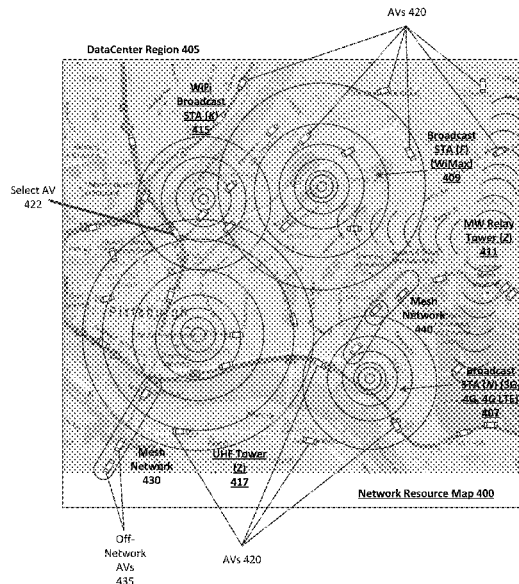
ISR and WO issued in PCT/US2016/0068563 dated Apr. 17, 2016.
(Continued)

Primary Examiner — Kimberly S Berona
Assistant Examiner — Michael F Whalen
(74) *Attorney, Agent, or Firm* — Mahamedi IP Law LLP

(57) **ABSTRACT**

An automated vehicle (AV) can be managed by a backend system and include an acceleration, braking, and steering system, an AV control system to maneuver the AV through road traffic throughout a given region, a memory to store a network resource map indicating locations of base stations and available network types providing coverage from the base stations throughout the given region, a communications array to transmit and receive communications from the backend system, and a communications system. The communications system can utilize the network resource map to dynamically select optimal network types from proximate base stations to communicate data with the backend system, and dynamically configure the communications array to connect with the optimal network types to transmit and receive data with the backend system.

20 Claims, 15 Drawing Sheets



(51)	Int. Cl.		2006/0059024 A1	3/2006	Bailey	
	<i>H04W 4/24</i>	(2018.01)	2006/0229070 A1*	10/2006	de La Chapelle	H01Q 1/28 455/431
	<i>H04W 48/06</i>	(2009.01)				
	<i>H04W 16/28</i>	(2009.01)	2006/0229103 A1*	10/2006	Monk	H04B 7/18506 455/562.1
	<i>H04B 7/04</i>	(2017.01)	2006/0229104 A1*	10/2006	de La Chapelle .	H04B 7/18506 455/562.1
	<i>H01Q 1/32</i>	(2006.01)				
	<i>H01Q 1/36</i>	(2006.01)	2007/0077945 A1	4/2007	Sheynblat	
	<i>H01Q 3/01</i>	(2006.01)	2007/0178911 A1	8/2007	Baumeister	
	<i>G05D 1/00</i>	(2006.01)	2007/0198145 A1	8/2007	Norris	
	<i>B60W 10/18</i>	(2012.01)	2008/0097688 A1	4/2008	Tashev	
	<i>B60W 10/20</i>	(2006.01)	2008/0186882 A1	8/2008	Scherzer	
	<i>B60W 30/18</i>	(2012.01)	2008/0242305 A1	10/2008	Kahlert	
	<i>G01S 17/89</i>	(2006.01)	2009/0005097 A1	1/2009	Shaffer	
	<i>G08G 1/00</i>	(2006.01)	2009/0109061 A1	4/2009	McNew et al.	
	<i>G01S 13/89</i>	(2006.01)	2009/0196234 A1	8/2009	Greene	
	<i>H04W 64/00</i>	(2009.01)	2009/0196258 A1	8/2009	Escobar Sanz	
			2009/0254254 A1	10/2009	Wang	
			2010/0082193 A1	4/2010	Chiappetta	
			2010/0151865 A1	6/2010	Camp, Jr.	
(52)	U.S. Cl.		2010/0256836 A1	10/2010	Mudalige	
	CPC	<i>B60W 30/18</i> (2013.01); <i>G01S 17/89</i> (2013.01); <i>G05D 1/0088</i> (2013.01); <i>G08G</i> <i>1/202</i> (2013.01); <i>H01Q 1/3216</i> (2013.01); <i>H01Q 1/364</i> (2013.01); <i>H01Q 3/01</i> (2013.01); <i>H04B 7/04</i> (2013.01); <i>H04W 4/24</i> (2013.01); <i>H04W 16/28</i> (2013.01); <i>H04W 48/06</i> (2013.01); <i>H04W 48/18</i> (2013.01); <i>G01S</i> <i>13/89</i> (2013.01); <i>H04W 64/003</i> (2013.01)	2010/0290359 A1*	11/2010	Dewey	G05B 19/4185 370/252
			2011/0128161 A1	6/2011	Bae et al.	
			2011/0171960 A1	7/2011	Hershey	
			2011/0227757 A1	9/2011	Chen	
			2011/0241862 A1	10/2011	Debouk	
			2012/0280662 A1	11/2012	Krauer	
			2013/0006674 A1	1/2013	Bowne	
			2013/0073327 A1	3/2013	Edelberg	
			2013/0115956 A1	5/2013	Ewert	
			2013/0122934 A1	5/2013	Branch	
			2013/0131907 A1	5/2013	Green	
			2013/0142035 A1	6/2013	Sunderrajan	
			2013/0182575 A1	7/2013	McLean	
			2013/0184985 A1	7/2013	Bollars	
			2013/0218469 A1	8/2013	Turton	
			2013/0225229 A1	8/2013	Al-Shalash	
			2013/0279349 A1	10/2013	Pandey	
			2013/0322388 A1	12/2013	Ahn	
			2014/0087739 A1	3/2014	Weaver	
			2014/0156133 A1	6/2014	Cullinane	
			2014/0180501 A1	6/2014	Kyllmann	
			2014/0188377 A1	7/2014	Bonawitz	
			2014/0244096 A1	8/2014	An	
			2014/0297116 A1	10/2014	Anderson	
			2014/0306833 A1*	10/2014	Ricci	B60Q 1/00 340/901
			2014/0309789 A1*	10/2014	Ricci	B60Q 1/00 700/276
			2014/0309814 A1	10/2014	Ricci	
			2014/0309864 A1	10/2014	Ricci	
			2014/0355476 A1	12/2014	Anderson	
			2014/0358353 A1	12/2014	Ibanez-Guzman	
			2015/0023256 A1	1/2015	Liu	
			2015/0062168 A1	3/2015	Ng-Thow-Hing	
			2015/0063144 A1	3/2015	Kozat	
			2015/0081212 A1	3/2015	Mitchell	
			2015/0133167 A1	5/2015	Edge	
			2015/0149078 A1	5/2015	Profous	
			2015/0181414 A1	6/2015	Bretscher	
			2015/0215738 A1	7/2015	Frusina	
			2015/0222372 A1	8/2015	Le Grand	
			2015/0264519 A1	9/2015	Mirzaei	
			2015/0281906 A1	10/2015	Tseng	
			2015/0308841 A1	10/2015	Matsunaga	
			2015/0331111 A1*	11/2015	Newman	G01S 17/58 356/4.01
			2015/0339928 A1	11/2015	Ramanujam	
			2016/0006723 A1	1/2016	Wilson	
			2016/0073117 A1	3/2016	Grasmug	
			2016/0157254 A1	6/2016	Novlan	
			2016/0282468 A1*	9/2016	Gruver	G01S 17/93
			2016/0301698 A1	10/2016	Katara	
			2016/0323356 A1	11/2016	Ribeiro	
			2016/0337935 A1	11/2016	Patil	
			2017/0120804 A1	5/2017	Kentley	
(56)	References Cited					
	U.S. PATENT DOCUMENTS					
	7,095,318 B1	4/2006	Bekhor			
	7,889,065 B2	2/2011	Smith			
	7,904,092 B2	3/2011	Hart			
	8,155,081 B1	4/2012	Mater			
	8,417,239 B1	4/2013	DeCusatis			
	8,437,890 B2	5/2013	Anderson			
	8,452,310 B1	5/2013	Orlik			
	8,676,431 B1	3/2014	Mariet			
	8,818,719 B1	8/2014	Thanayankizil			
	8,880,273 B1	11/2014	Chatham			
	8,954,252 B1	2/2015	Urmson			
	9,014,905 B1	4/2015	Whitehill			
	9,025,463 B1	5/2015	Mankee			
	9,057,620 B2	6/2015	Dave			
	9,087,348 B2	7/2015	Petrucci			
	9,107,132 B2	8/2015	Kowshik			
	9,260,092 B1	2/2016	Lombrozo			
	9,349,284 B2	5/2016	Cudak			
	9,432,929 B1*	8/2016	Ross	G05D 1/0274		
	9,441,975 B2	9/2016	Pylappan			
	9,467,832 B2	10/2016	Haney			
	9,475,422 B2	10/2016	Hillis			
	9,481,367 B1	11/2016	Gordon			
	9,483,948 B1	11/2016	Gordon			
	9,488,490 B2	11/2016	Chintakindi			
	9,537,561 B1*	1/2017	Kotecha	H04B 7/18506		
	9,557,183 B1*	1/2017	Ross	G01C 21/34		
	9,565,625 B1*	2/2017	MacNeille	H04W 48/18		
	9,603,158 B1*	3/2017	Ross	H04W 72/085		
	2002/0029108 A1	3/2002	Liu			
	2003/0073442 A1	4/2003	Fattouch			
	2004/0029558 A1	2/2004	Liu			
	2005/0090226 A1	4/2005	Wolf			
	2005/0168353 A1	8/2005	Dement			
	2005/0171654 A1	8/2005	Nichols			

(56)

References Cited

U.S. PATENT DOCUMENTS

2017/0132334 A1 5/2017 Levinson
2017/0268888 A1 9/2017 Blumenberg
2017/0371338 A1 12/2017 Kamata

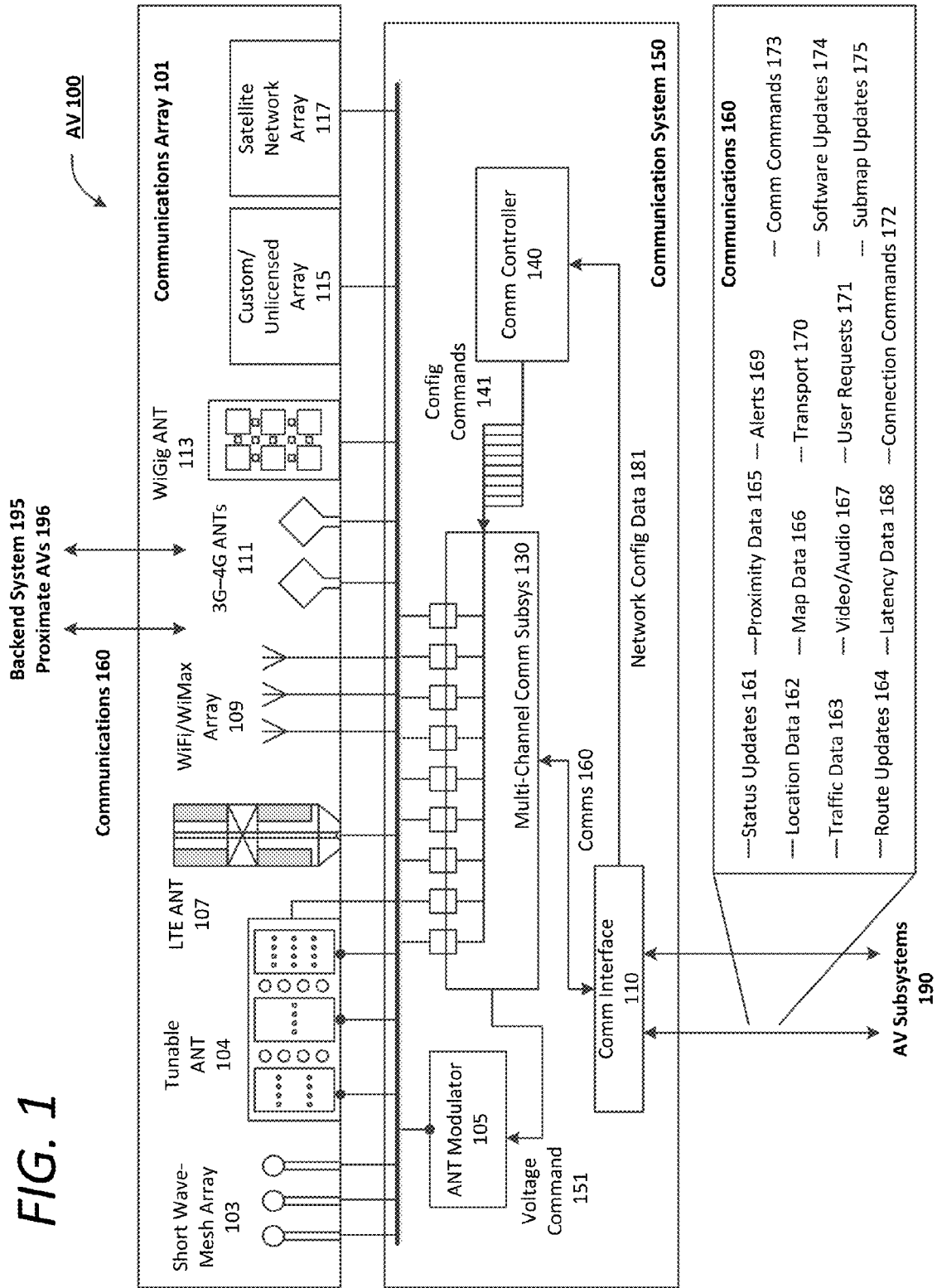
OTHER PUBLICATIONS

Jennifer J.N.Liu, et al., "Mobile Ad Hoc Networking with a View of 4G Wireless: Imperatives and Challenges", In: Mobile Ad Hoc Networking, 2004 Institute of Electrical and Electronics Engineers, Inc. Jan. 28, 2005, Section 1.2.

ISR and WO issued in PCT/US2016/065656 dated Apr. 11, 2016.

* cited by examiner

FIG. 1



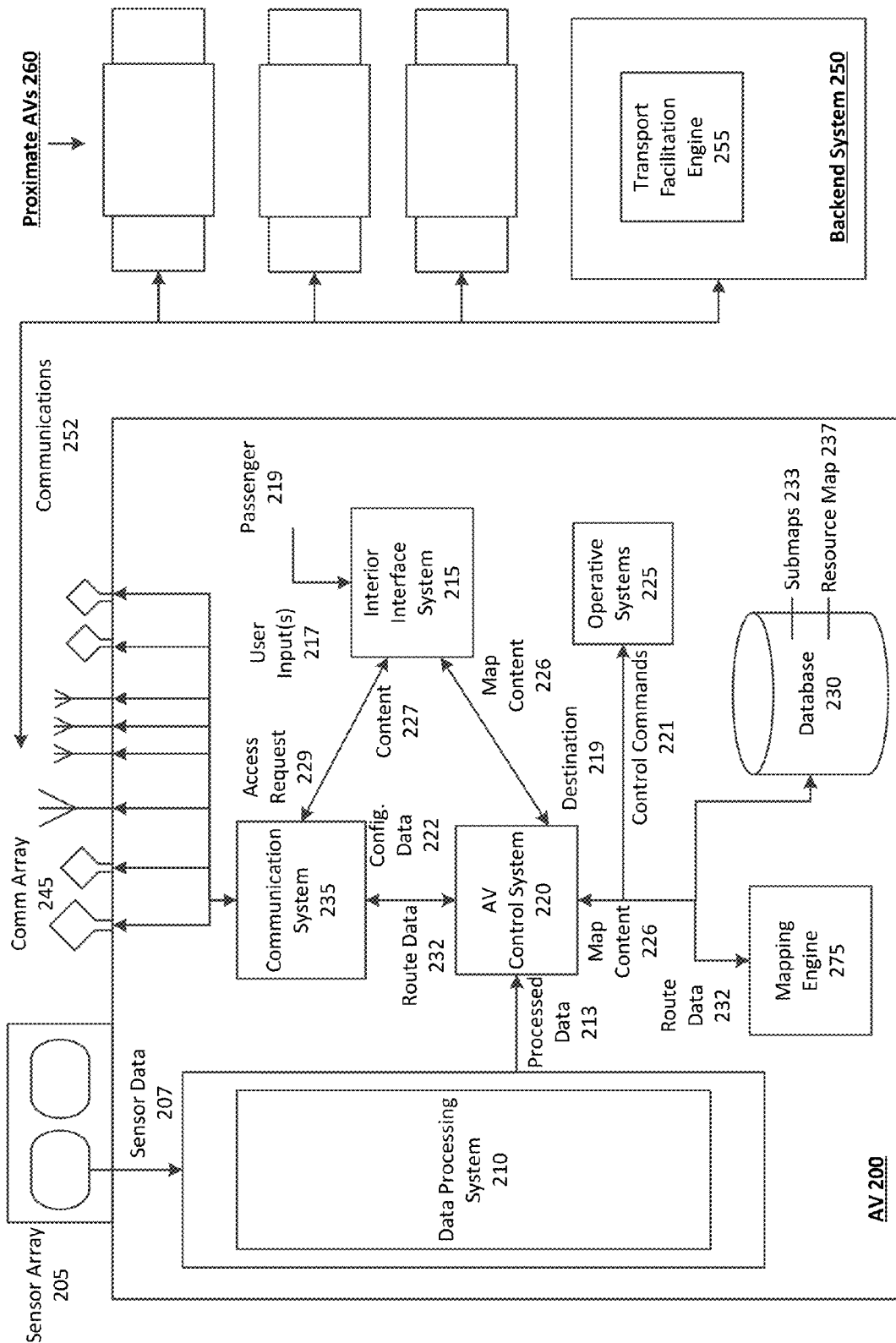


FIG. 2

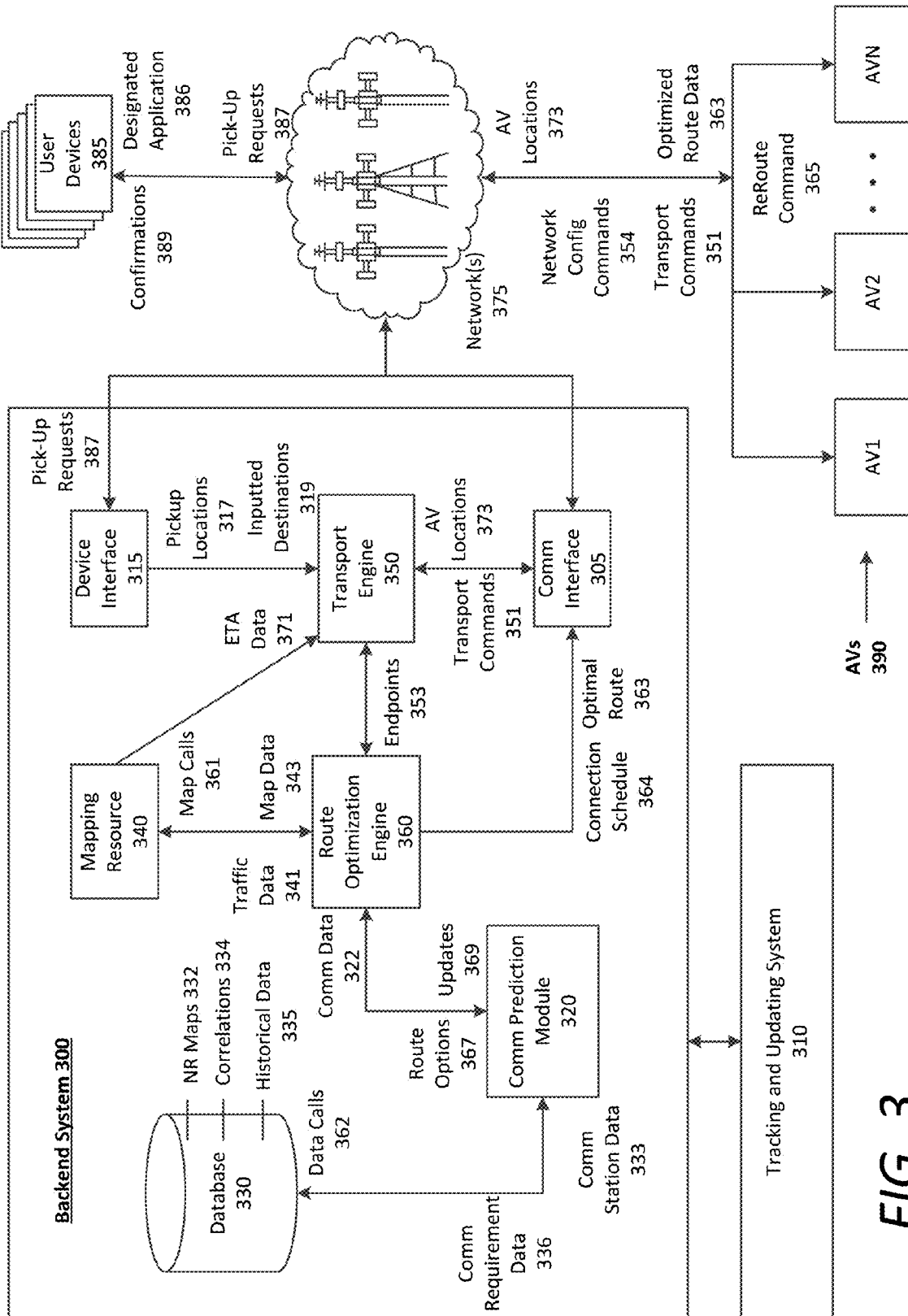


FIG. 3

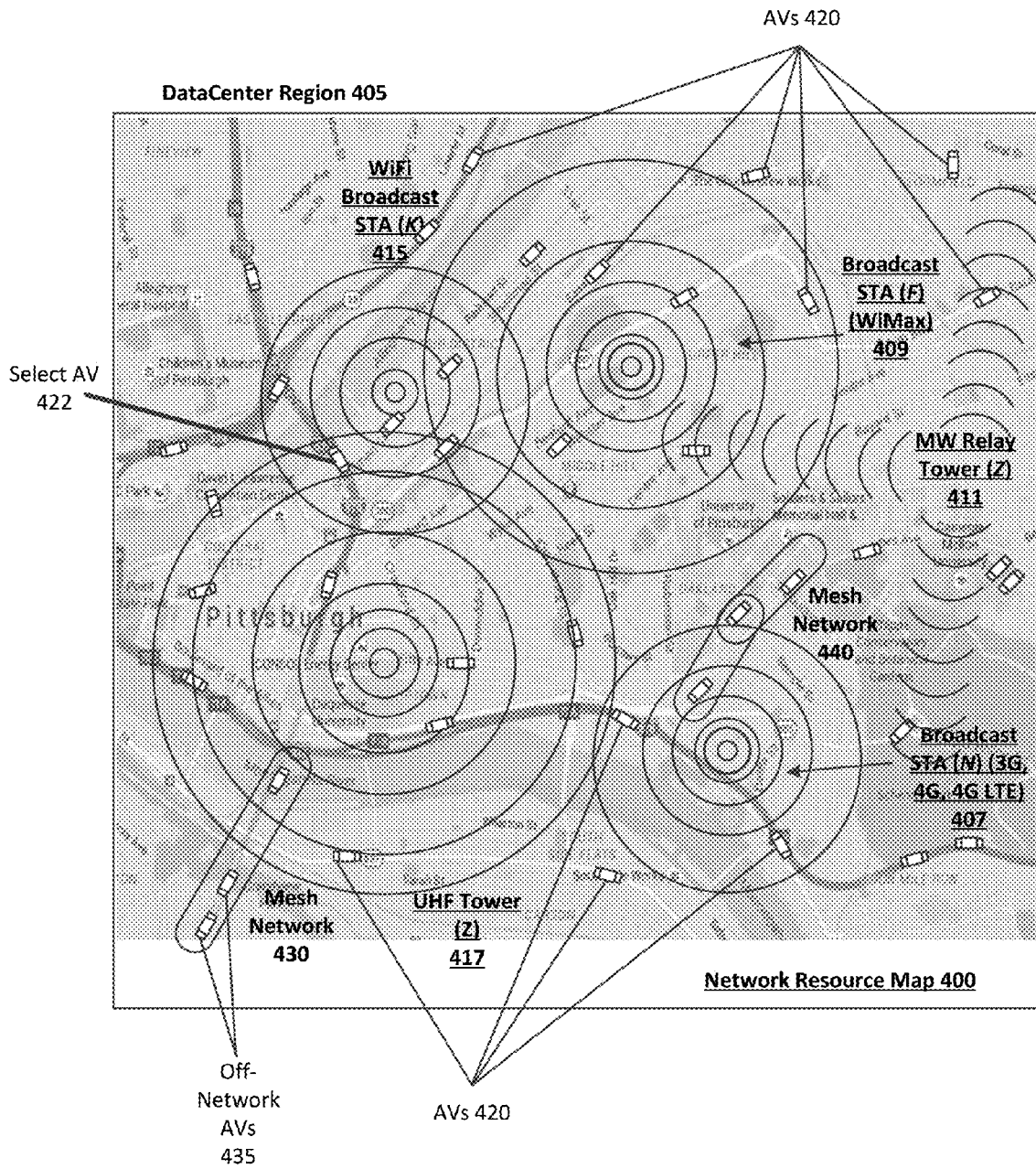


FIG. 4

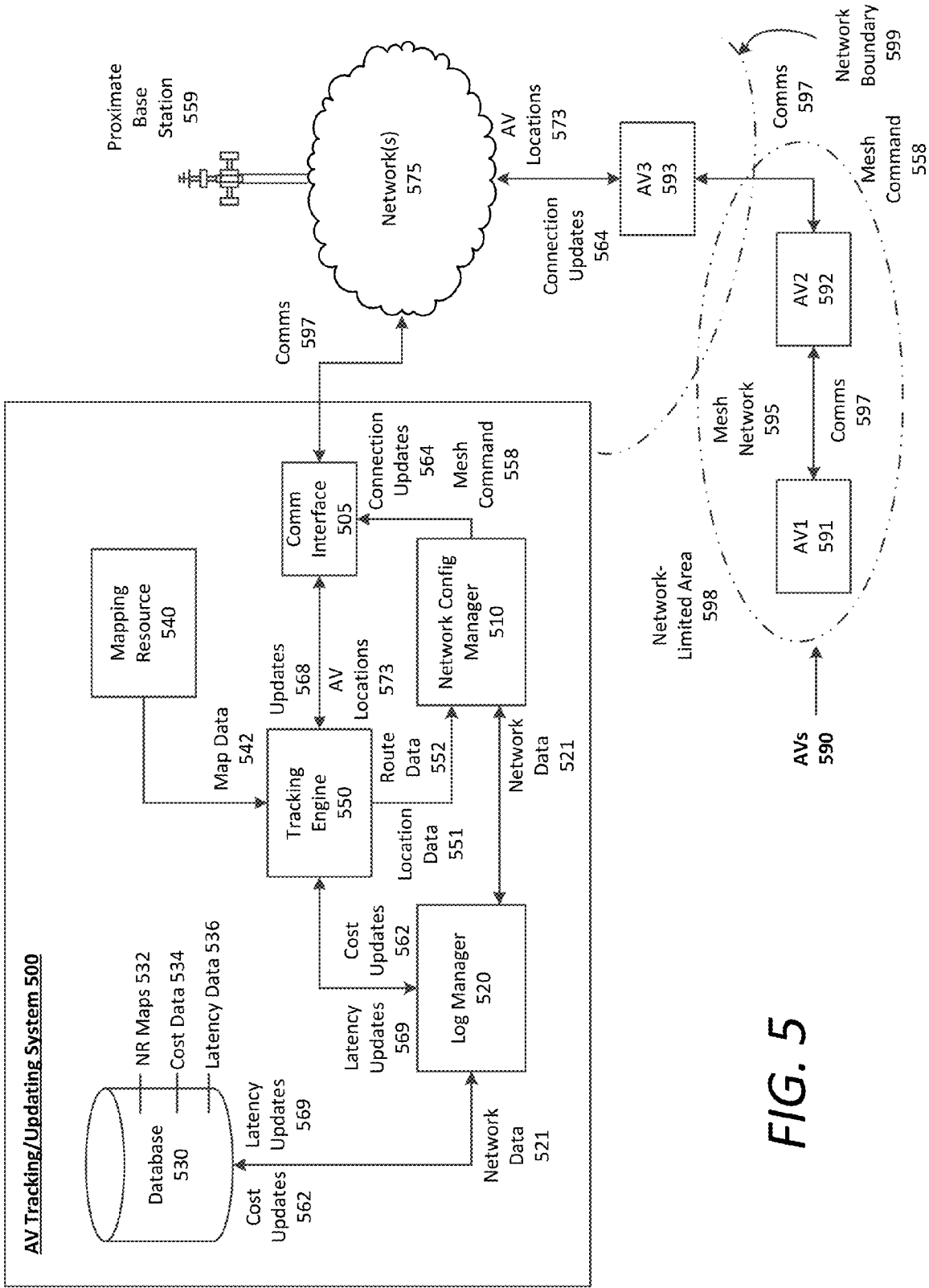


FIG. 5

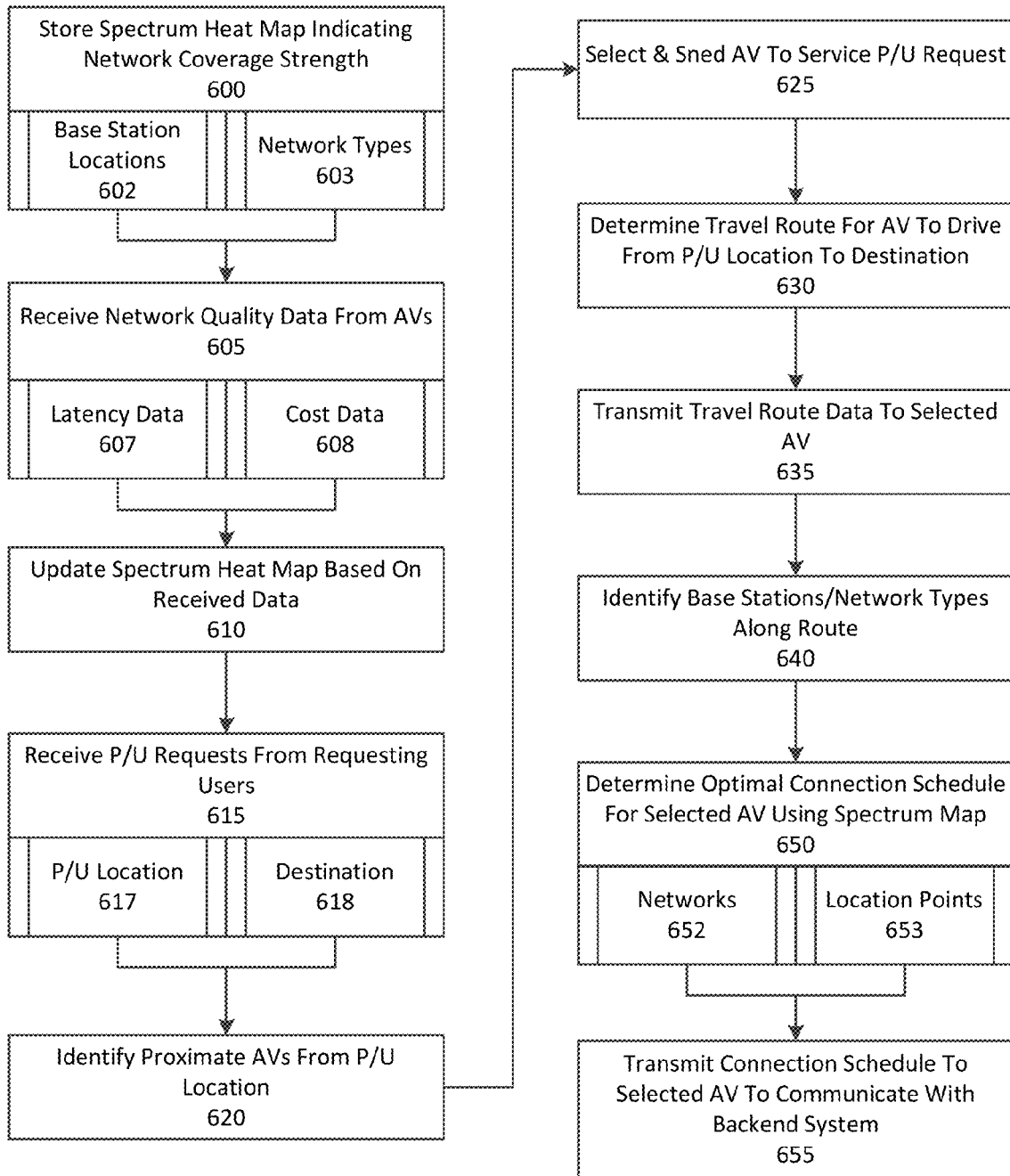


FIG. 6

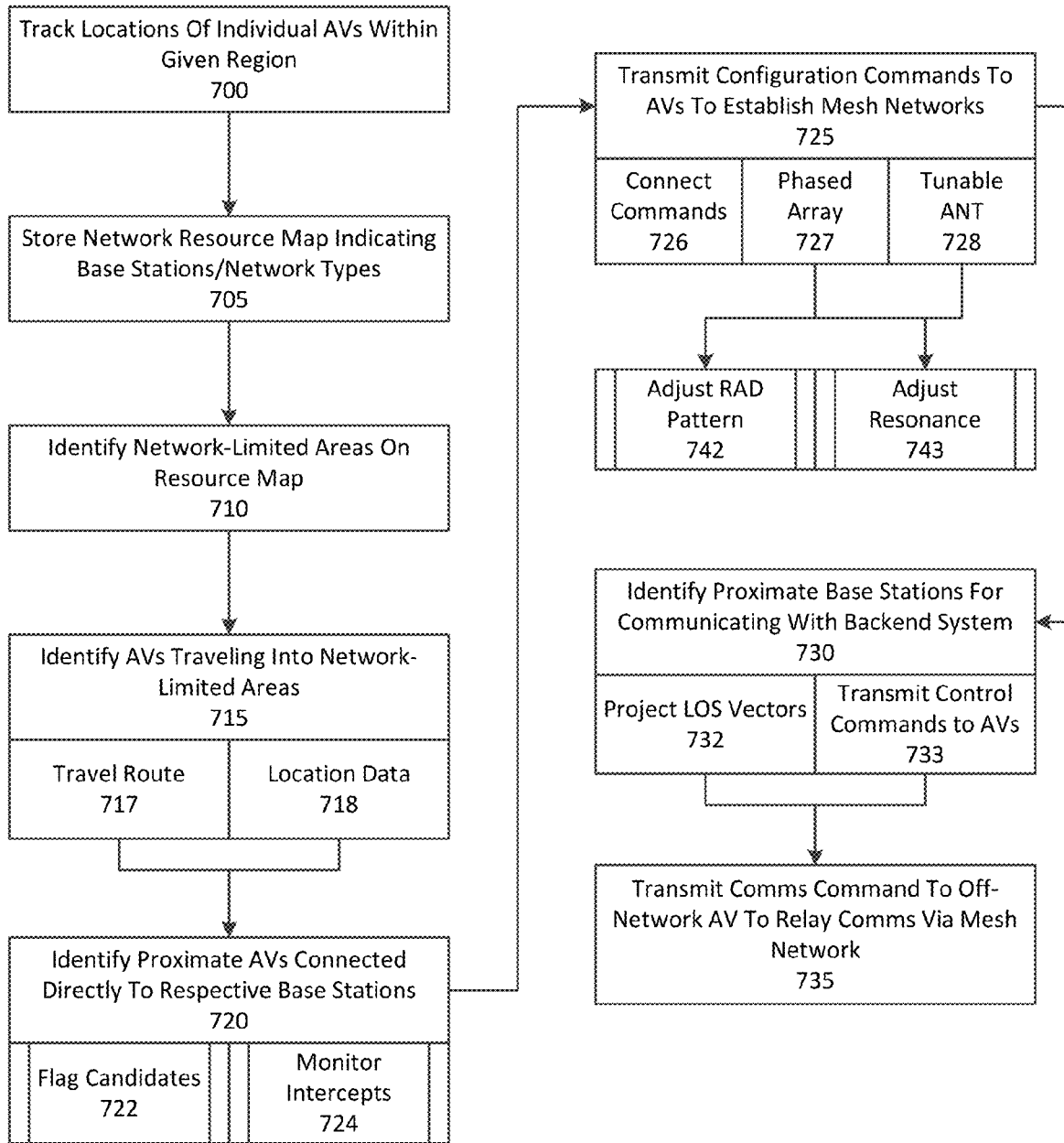


FIG. 7

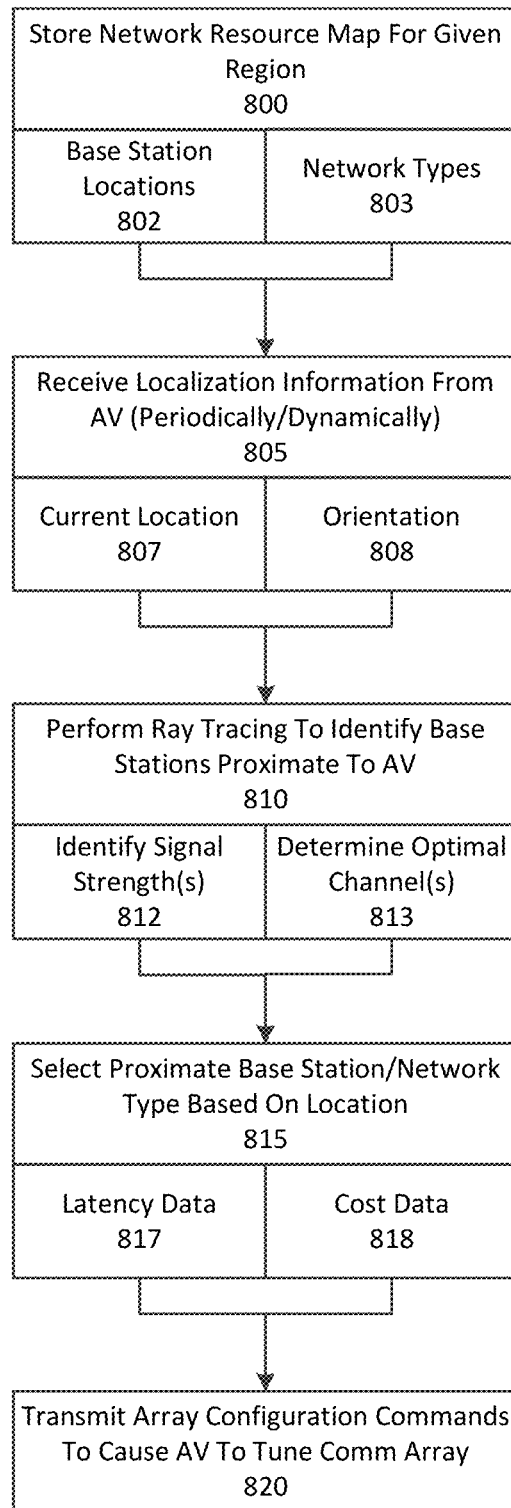


FIG. 8

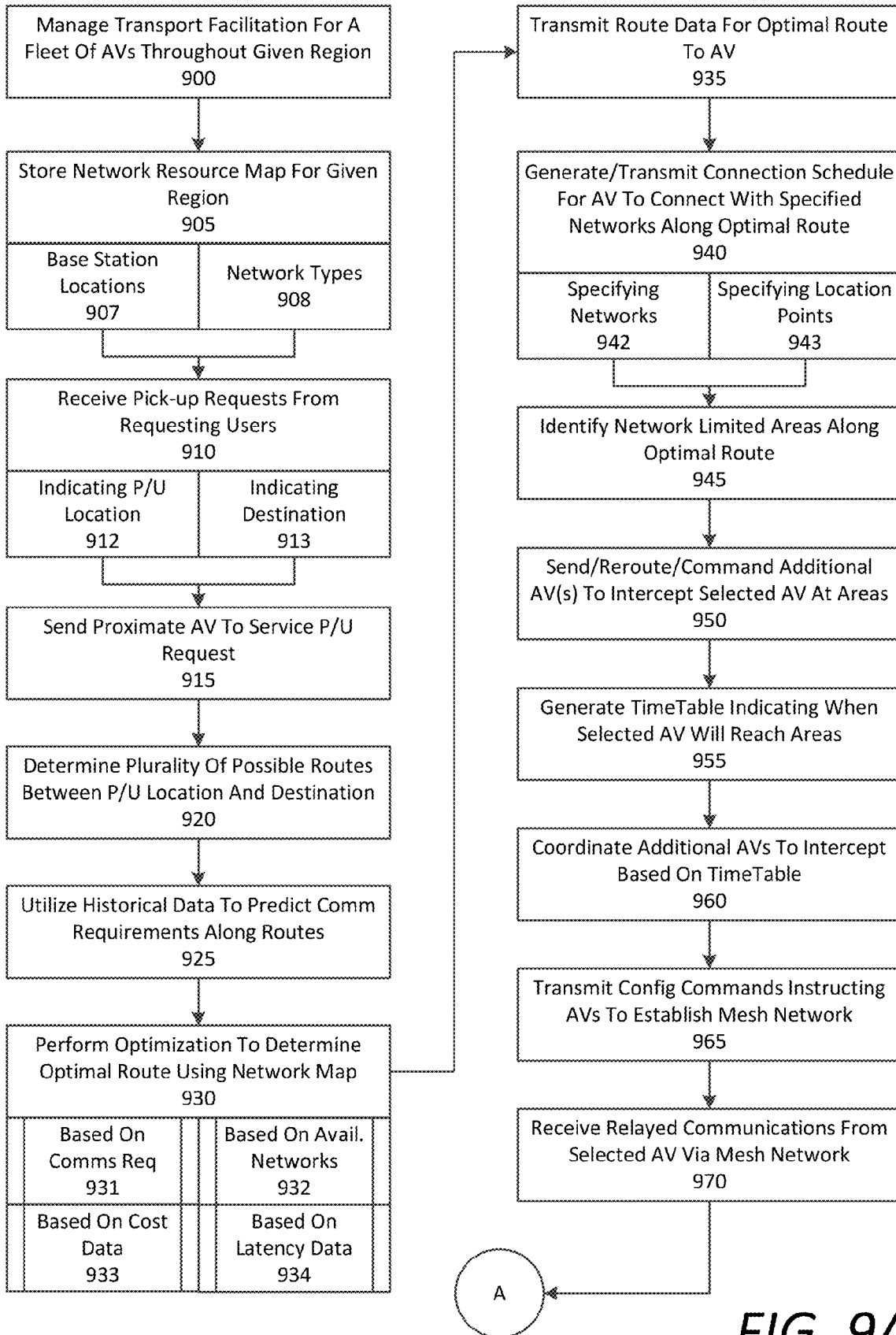


FIG. 9A

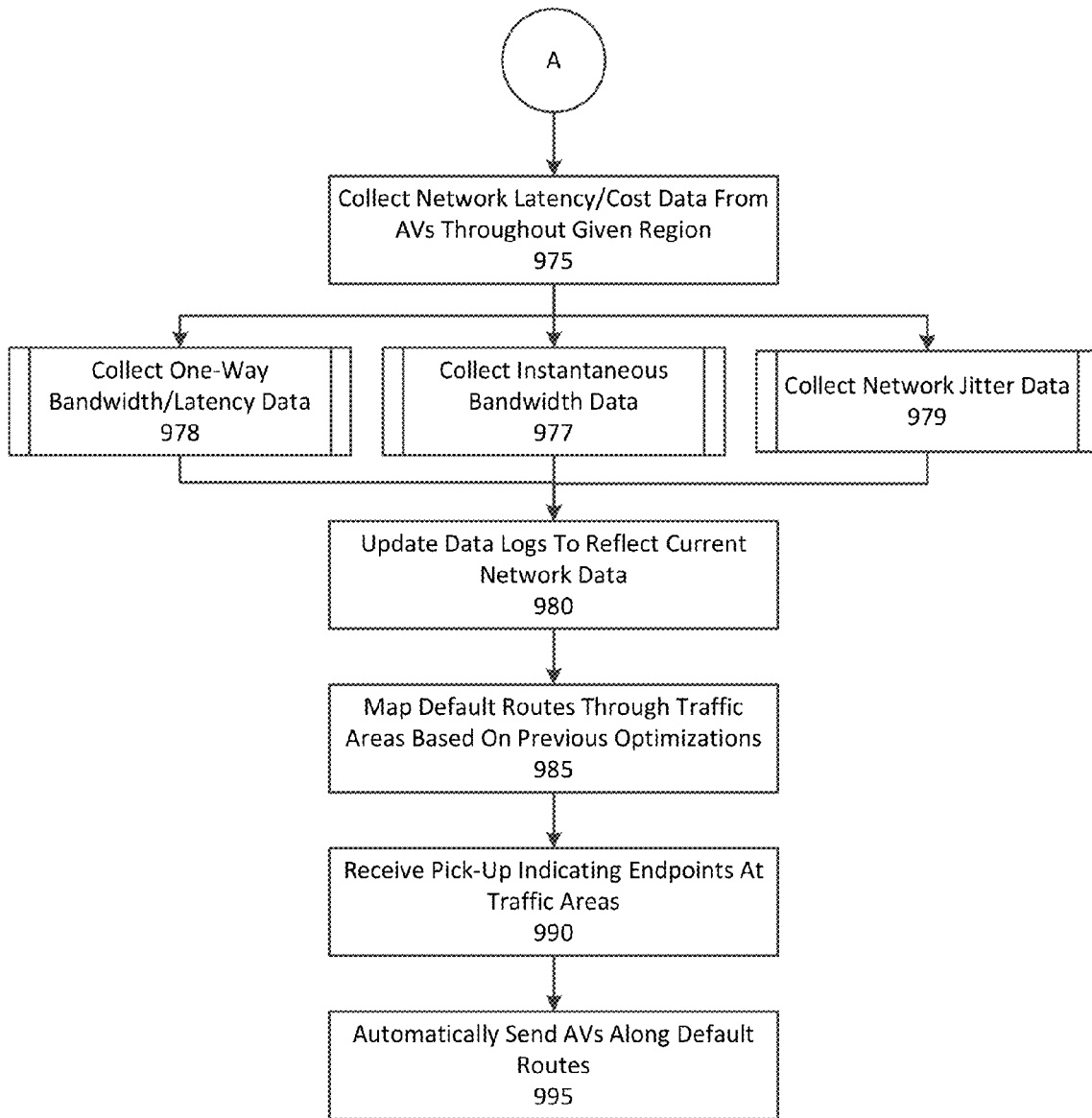


FIG. 9B

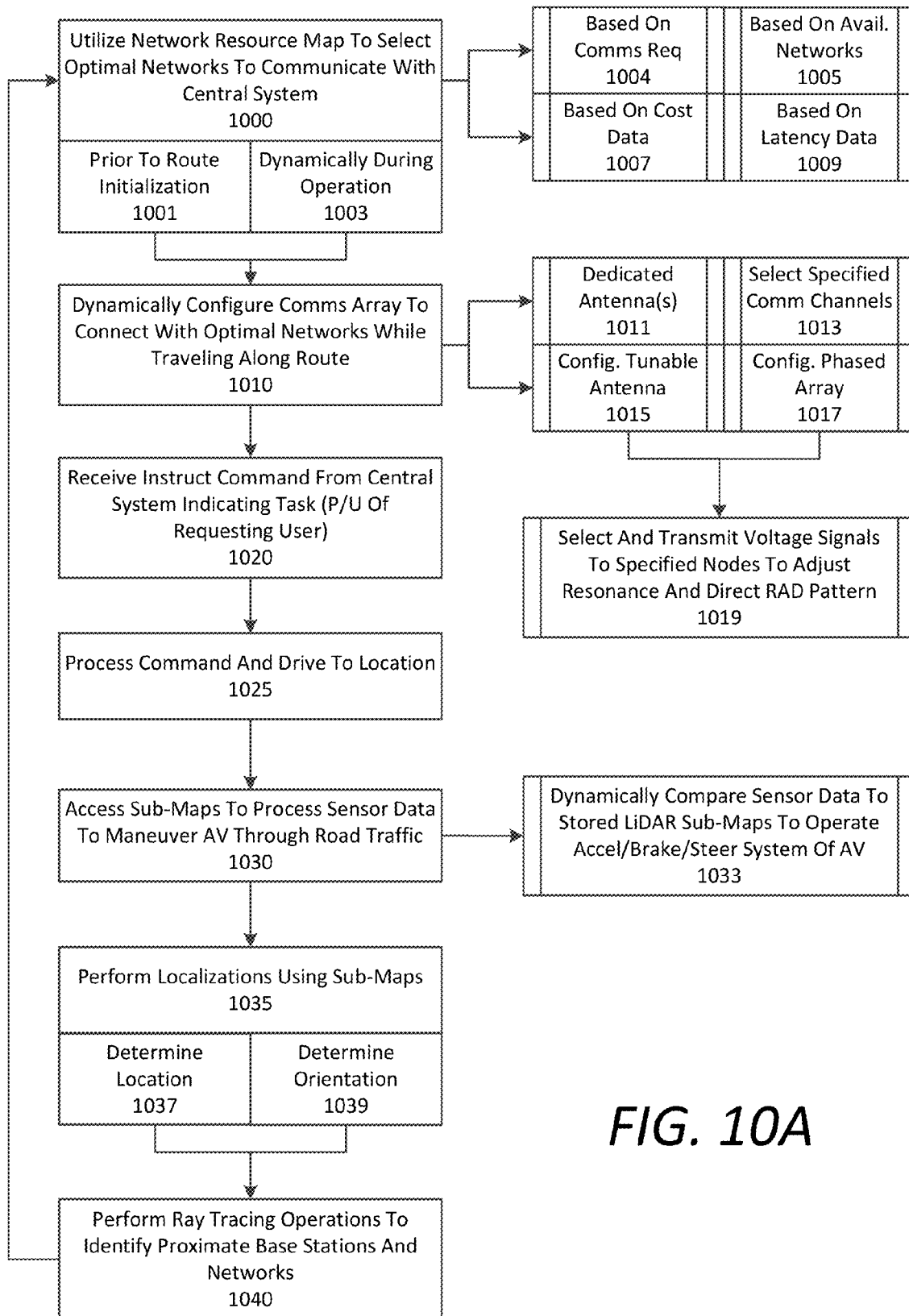


FIG. 10A

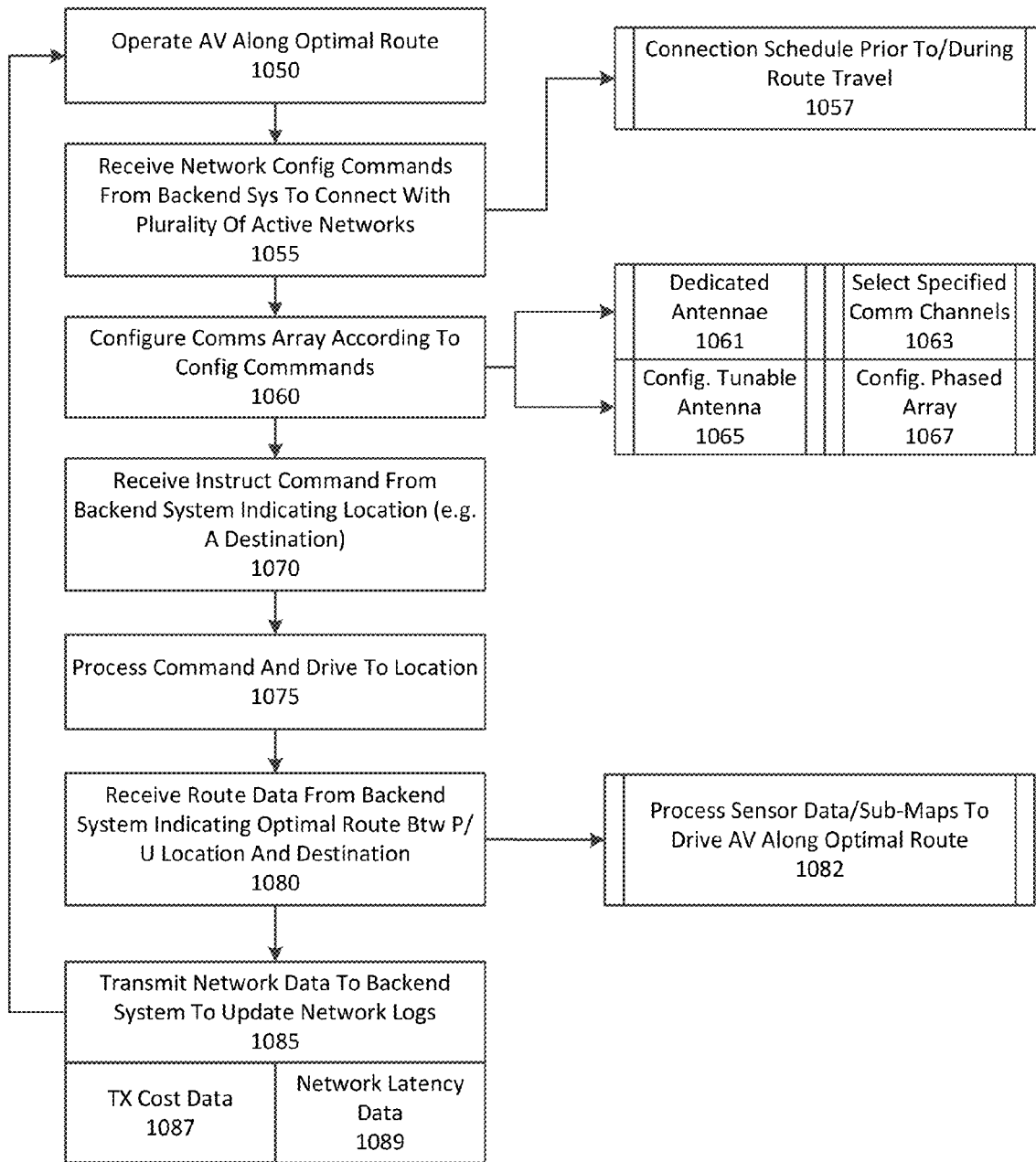


FIG. 10B

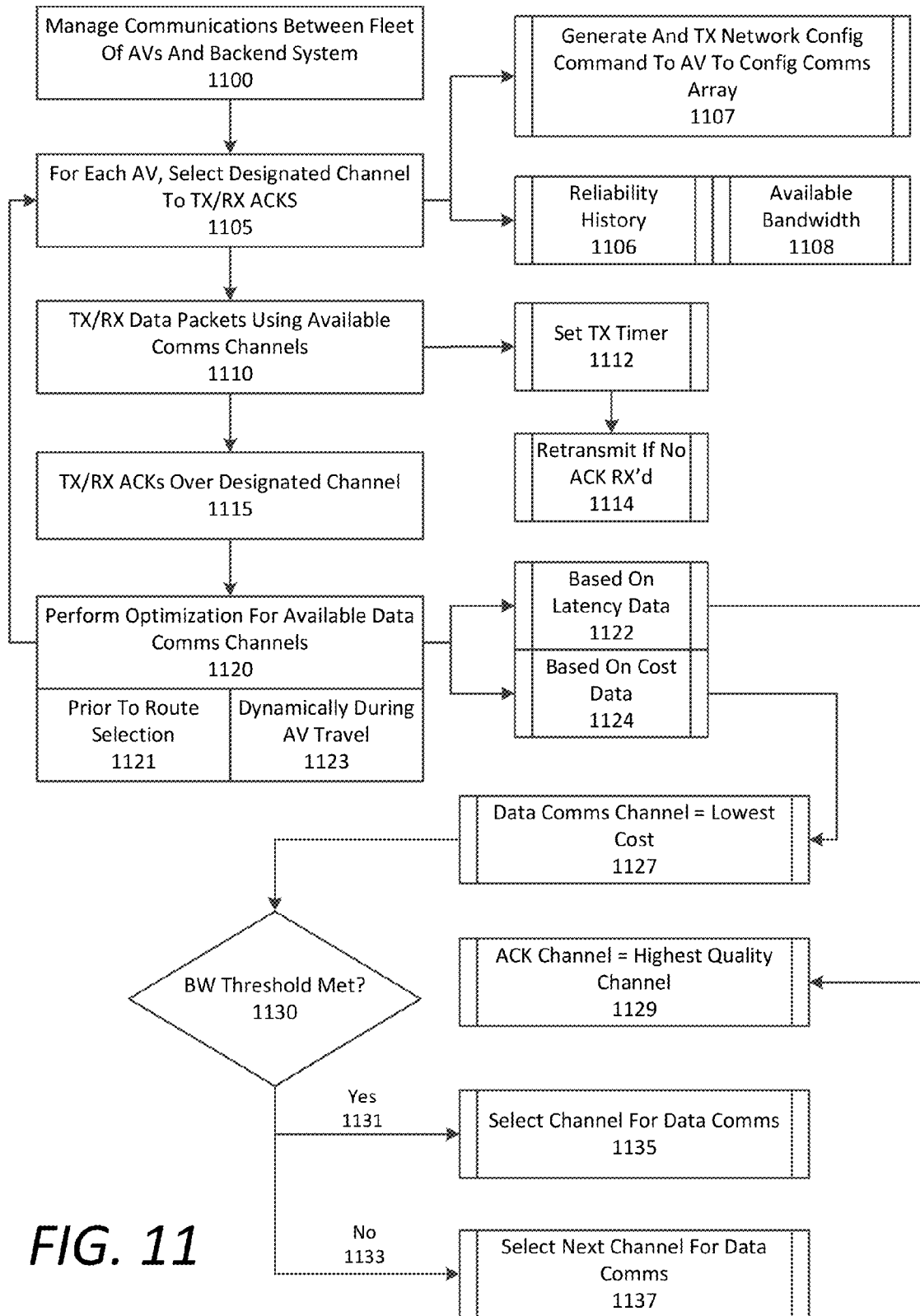


FIG. 11

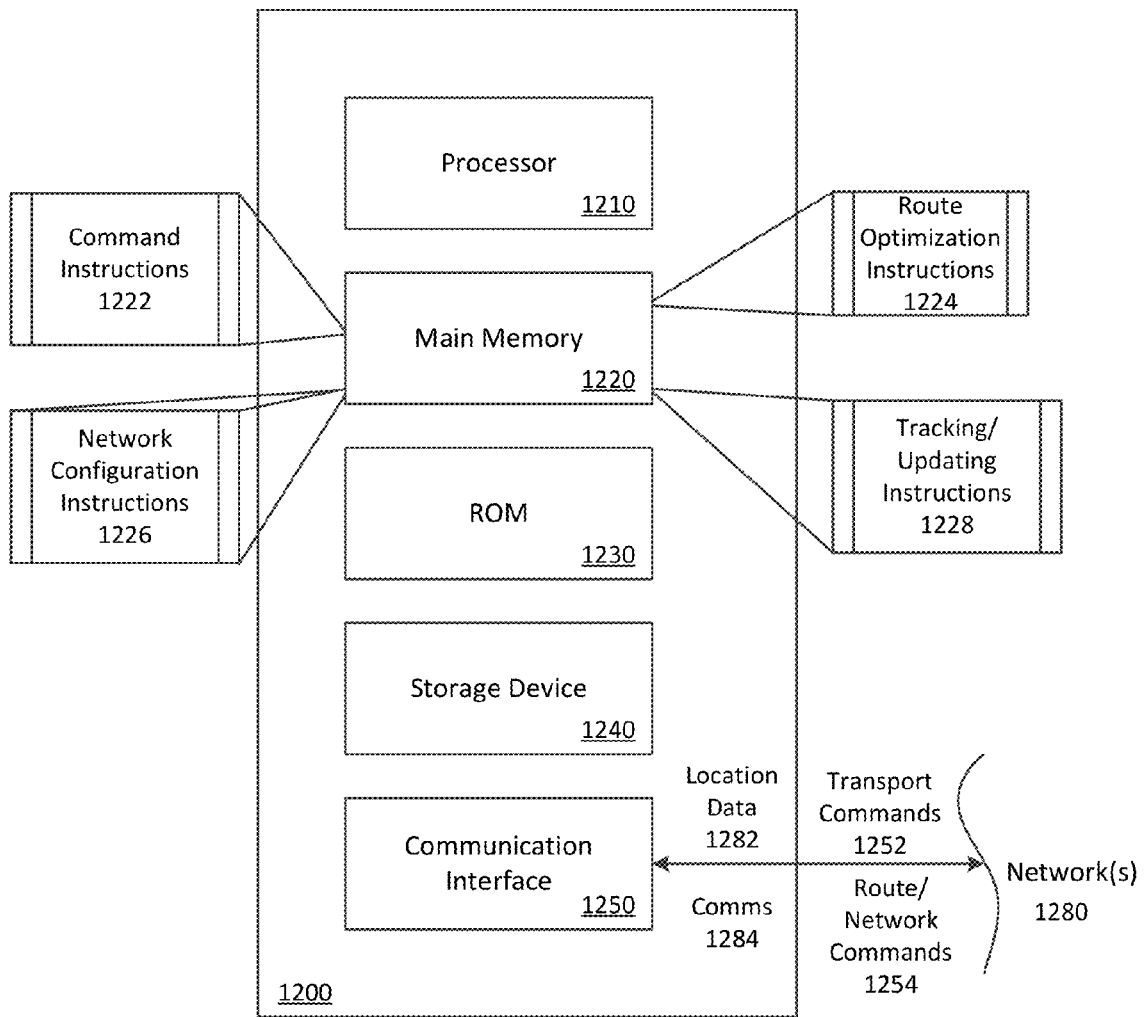


FIG. 12

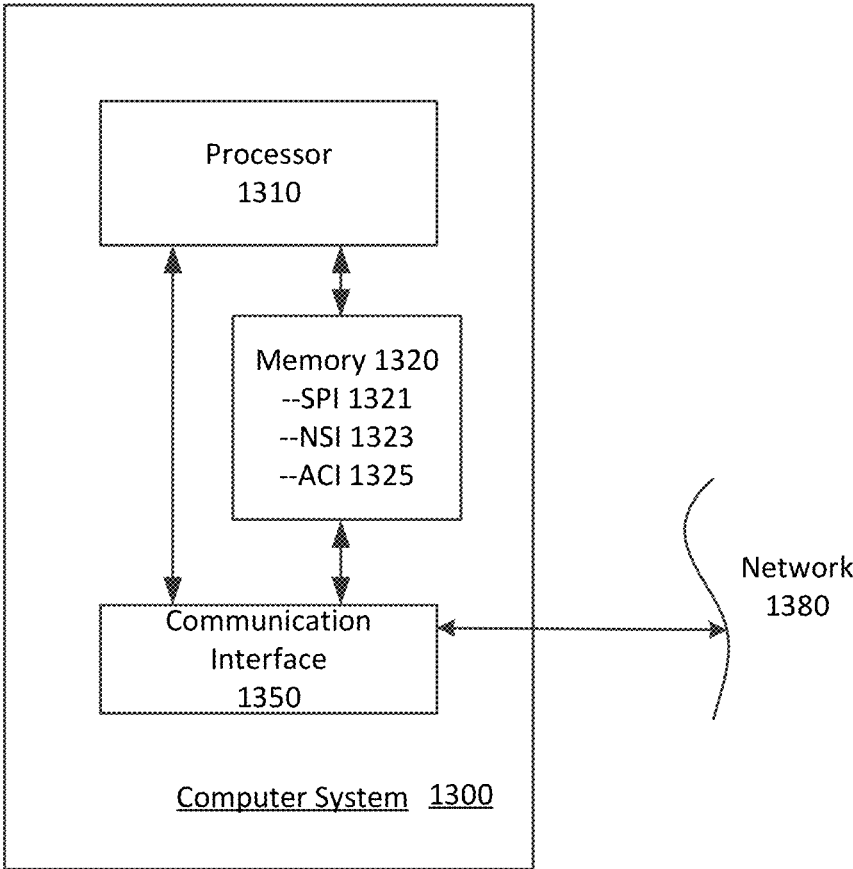


FIG. 13

AUTOMATED VEHICLE COMMUNICATIONS SYSTEM

BACKGROUND

Automated or autonomous vehicles (AVs) may require continuous sensor data processing using an on-board data processing system. Communications between multiple AVs (AV2AV), and between the AVs and a backend system (e.g., a fleet management system), may cause unacceptable transmission delays when the backend system is managing multiple AVs (e.g., a datacenter tracking and sending out AVs throughout a given region or city to facilitate transportation requests). For example, network latency can hinder fluidity in AV operations, thus negatively impacting the rollout of AV usage on public roads and highways.

BRIEF DESCRIPTION OF THE DRAWINGS

The disclosure herein is illustrated by way of example, and not by way of limitation, in the figures of the accompanying drawings in which like reference numerals refer to similar elements, and in which:

FIG. 1 is a block diagram illustrating an example communications array for an AV, according to examples described herein;

FIG. 2 is a block diagram showing an example AV in communication with a number of proximate AVs and a backend system;

FIG. 3 is a block diagram showing an example backend system in communication with a number of user devices and AVs;

FIG. 4 illustrates an example network resource map utilized by an example backend system and/or an example AV, as described herein;

FIG. 5 illustrates an example AV tracking and updating system for use in connection with a backend system;

FIG. 6 is a flow chart describing an example method of managing transportation and network connection timing for a fleet of AVs throughout a given region;

FIG. 7 is a flow chart describing an example method of managing mesh networks for a fleet of AVs throughout a given region;

FIG. 8 is a flow chart describing an example method of selecting optimal channels for an AV using ray tracing operations;

FIGS. 9A and 9B are flow charts describing an example method of selecting optimal routes and connections for AVs throughout a given region;

FIGS. 10A and 10B are flow charts describing example methods of channel selection and routing as performed by an example AV, as described herein;

FIG. 11 is a flow chart describing an example method of selecting designated channels for specified communications;

FIG. 12 is a block diagram that illustrates a computer system upon which example backend systems and AV tracking and updating systems described herein may be implemented; and

FIG. 13 is a block diagram that illustrates a computer system upon which example AV systems described herein may be implemented.

DETAILED DESCRIPTION

A backend system is provided to send out and coordinate routes for a fleet of AVs within a given region based on communication requirements. The backend system can

receive pick-up requests from user devices executing a designated application to facilitate transportation for requesting users. Each pick-up request can include a pick-up location and a destination. The backend system can instruct and send out AVs to service the pick-up requests (e.g., provide a deliver or transport service, or a trip). For each pick-up request or trip, the backend system can perform an optimization operation to determine an optimal route for an AV to travel to the pick-up location (e.g., to pick up the user) and/or to travel to the destination (e.g., to drop off the user) by utilizing a network resource map comprising base station locations, available networks/network types, coverage areas, and bandwidth gradients (e.g., spectrum heat maps) for a plurality of communication protocols. The backend system may then transmit route data for the optimal route to the selected AV.

In some examples, the backend system can predict communication requirements for the selected AV between the pick-up location and the destination. For example, enhanced communications may be necessary when the AV travels through a crowded area of a city, or through high traffic areas. The backend system can determine the optimal route based on the results of the optimization operation, which can account for predicted communications requirements for the selected AV.

In certain aspects, the AV can include hardware, and/or a combination of executable software and hardware, to communicate with the backend system and other AVs using several communications protocols. Such protocols can include third generation (3G), fourth generation (4G), or long-term evolution (LTE) telecommunications technology. Additionally or alternatively, the protocols can include Wireless Gigabit Alliance (WiGig), WiMax, WiFi, dedicated short range communications (DSRC), mesh networking, and other like technologies. Utilizing network resource data provided by the network resource map, the backend system can dynamically transmit network configuration data to the selected AV to configure the AV's on-board communications system for optimal communications along the optimal route. The network configuration data can cause the selected AV to switch between a plurality of communication channels along the optimal route in order to optimize communications. Furthermore the network configuration data can comprise commands instructing the AV to communicate over multiple channels simultaneously. For example, the network configuration commands can instruct the AV to transmit and receive transmission acknowledgments (ACKs) on a more reliable channel than lower priority data, such as network latency updates.

In respective implementations, the backend system can identify certain locations along the optimal route that have limited network availability. In these situations, the backend system can manage routing for additional AVs in the fleet to establish mesh networks when respective AVs travel through these limited network areas. The backend system can target these network-limited areas and route selected AVs so that AVs traveling through these areas can continue to communicate with the backend system via the established mesh networks, which can be dynamically configured amongst proximate AVs. The routing of these AVs, which may also be routed to respective destinations, can be timed, routed, and rerouted in a manner such that the limited nature of network availability in these areas is sufficiently mitigated to provide reliable communications to "off-network" AVs.

In order to maintain up-to-date data for the network resource map, the backend system can collect network latency data from the fleet of AVs to update the network

resource map. In many aspects, the backend system also collect cost data from the fleet of AVs, where the cost data indicates costs associated with connecting to communications networks throughout the given region. Thus, the optimal route may be determined based not only on base station locations, predicted communications requirements, mesh networking or limited availability areas, but also based on the cost data collected for network connectivity throughout the given region. Collection of the cost data and network latency data enables the backend system to continuously update a database with such data, and further map a number of optimal default routes between high traffic destinations throughout the given region based on the updated network latency data and the updated cost data. Accordingly, in certain implementations, the backend system can automatically send out AVs on the optimal default routes for pick-up requests that match the certain route endpoints.

Among other benefits, the examples described herein achieve a technical effect of optimizing communications between selected AVs and a backend system (e.g., a backend system) that manages communications with and between the AVs. The AVs can include communications capabilities for any number of communications protocols (e.g., 4G LTE, DSRC, WiMAX, 900 MHz ultra-high frequency (UHF) radio, etc.). The backend system can determine optimal routes for communications when AVs are sent out to respective destinations based on any number of the following: base station locations, network types, connectivity costs, mesh networking opportunities, road traffic, network latency, coverage areas, available bandwidth, and the like. The backend system can further transmit dynamic network configuration commands to configure the communications systems of the AVs to transmit and receive data using a particular communications protocol as the AVs travel along the calculated optimal routes.

As used herein, a computing device refers to devices corresponding to desktop computers, cellular devices or smartphones, personal digital assistants (PDAs), laptop computers, tablet devices, television (IP Television), etc., that can provide network connectivity and processing resources for communicating with the system over a network. A computing device can also correspond to custom hardware, in-vehicle devices, or on-board computers, etc. The computing device can also operate a designated application configured to communicate with the network service.

One or more examples described herein provide that methods, techniques, and actions performed by a computing device are performed programmatically, or as a computer-implemented method. Programmatically, as used herein, means through the use of code or computer-executable instructions. These instructions can be stored in one or more memory resources of the computing device. A programmatically performed step may or may not be automatic.

One or more examples described herein can be implemented using programmatic modules, engines, or components. A programmatic module, engine, or component can include a program, a sub-routine, a portion of a program, or a software component or a hardware component capable of performing one or more stated tasks or functions. As used herein, a module or component can exist on a hardware component independently of other modules or components. Alternatively, a module or component can be a shared element or process of other modules, programs or machines.

Some examples described herein can generally require the use of computing devices, including processing and memory resources. For example, one or more examples described herein may be implemented, in whole or in part, on com-

puting devices such as servers, desktop computers, cellular or smartphones, personal digital assistants (e.g., PDAs), laptop computers, printers, digital picture frames, network equipment (e.g., routers) and tablet devices. Memory, processing, and network resources may all be used in connection with the establishment, use, or performance of any example described herein (including with the performance of any method or with the implementation of any system).

Furthermore, one or more examples described herein may be implemented through the use of instructions that are executable by one or more processors. These instructions may be carried on a computer-readable medium. Machines shown or described with figures below provide examples of processing resources and computer-readable mediums on which instructions for implementing examples disclosed herein can be carried and/or executed. In particular, the numerous machines shown with examples of the invention include processor(s) and various forms of memory for holding data and instructions. Examples of computer-readable mediums include permanent memory storage devices, such as hard drives on personal computers or servers. Other examples of computer storage mediums include portable storage units, such as CD or DVD units, flash memory (such as carried on smartphones, multifunctional devices or tablets), and magnetic memory. Computers, terminals, network enabled devices (e.g., mobile devices, such as cell phones) are all examples of machines and devices that utilize processors, memory, and instructions stored on computer-readable mediums. Additionally, examples may be implemented in the form of computer-programs, or a computer usable carrier medium capable of carrying such a program.

System Descriptions

FIG. 1 is a block diagram illustrating an example communications array 101 for an AV 100, according to examples described herein. The communications array 101 can comprise any number of the arrays and antennas shown in FIG. 1. In some examples, the communications array 101 can include a single or multiple antennas to transmit and receive communications in accordance with multiple communication protocols. In variations, the communications array 101 can include multiple dedicated antennas for different communication protocols, such as 3G, 4G, LTE, DSRC, WiFi, WiGig, WiMax, and like protocols. In the example shown in FIG. 1, multiple dedicated antennas and arrays are shown for illustrative purposes. However, example communications arrays 101 described herein may include any number of antennas and/or one or more communications arrays shown and described with respect to FIG. 1. As such, the communications array 101 can be controlled and configured by a communication system 150 of the AV 100 and can communicate with a backend system 195 and other AVs 196 using any number of a selectable set of communications protocols shown and described.

In some examples, the communications array 101 can include short-wave communications array 103, such as a DSRC array, for short range communications. For example, the short range communications array 103 may be utilized by the AV 100 to establish a mesh network with one or more proximate AVs 196 in order to relay communications 160 through proximate AVs 196 to a base station network in order to maintain communication connectivity to the backend system 195. Other communications hardware may be included in the communications array 101 to establish mesh networks between AVs and to establish connectivity with different network types. For example, a WiFi and/or WiMax array 109, 3G or 4G antennas 111, and/or a 4G LTE antenna 107 can be included. The communications array 101 may

further include a WiGig antenna **113**, or dedicated arrays for custom or unlicensed channels **115**. In some examples, the communications array **101** can also include a satellite network array **117** that can transmit and receive communications **160** via a global satellite Internet network.

In certain aspects, the communications array **101** can include a tunable antenna **104** that can be configured to communicate in multiple different frequencies and can be phase-adjusted, and gain pattern adjusted in order to maximize communication link quality. In such aspects, the communication system **150** can include a tunable antenna modulator **105** which can operate to adjust the frequency, phase, and/or gain pattern of the tunable antenna **104** based on available networks, base station locations, and the orientation of the AV **100**. For example, a communications controller **140** of the communications system **150** can respond to network configuration commands **181** received from the backend system **195**, and can generate voltage commands **151** to ultimately adjust the tunable antenna **104** to communicate over a specified channel indicated in the network configuration data **181**.

Still referring to FIG. 1, the AV's **100** communication system **150** can be included as a component of an on-board data processing system that configures the communications array **101** to transmit and receive communications **160** based on network configuration data **181** received from the backend system **195**, or relayed from one or more proximate AVs **196**. In many aspects, the communication controller **140** can control a multi-channel communication subsystem **130** to configure the communications array **101** to transmit and receive data over one or multiple channels simultaneously. For example, the communications controller **140** can receive network configuration data **181** dynamically from the backend system **195**, a proximate AV **196**, or one or more AV subsystems **190**. Based on the network configuration data **181**, the communications controller **140** can generate configuration commands **141** to cause the multi-channel communications subsystem **130** to configure the communications array **101** accordingly.

Communications **160** received from the backend system **195** and proximate AVs **196** can be received by the multi-channel communication subsystem **130** and transmitted to the AV subsystems **190** via a communication interface **110**. Communications **160** may also be transmitted via the multi-channel communications subsystem **130** and the communications array **101**. As provided herein, such communications **160** transmitted from and received by the AV **100** can include status updates **161** of the AV **100**, location data **162**, traffic data **163**, route updates **164**, proximity data **165**, map data **166**, video and audio data **167**, network latency data **168**, various types of alerts **169**, transport commands **170**, user requests **171**, network updates **172**, communication commands **173**, software updates **174**, sub-map updates **175**, and the like.

In many examples, the status updates **161** can be periodically transmitted from the AV **100** to the backend system **195**. For example, a status update **161** may be automatically transmitted by the AV **100** when a status of the AV **100** has changed. The status updates **161** can include information relating to whether the AV **100** is available to service a pick-up request, a current fuel or power level, a current destination, service history, mileage, and the like.

Location data **162** may be transmitted by the AV **100** according to a particular protocol (e.g., transmission of a GPS location data packet every 3-5 seconds). Each location data transmission **162** can include data indicating a current location of the AV **100**. The backend system **195** can utilize

the location data **162** to, for example, manage routing of a fleet of AVs within a given region (e.g., a transportation arrangement service utilizing hundreds to thousands of AVs and spanning a city or a certain population). Traffic data **163** and map data **166** can be periodically provided or streamed to the AV **100** by the backend system **195**, or a third party mapping resource, to enable the AV **100** to provide updates to passengers and potentially update a current route.

Additionally or alternatively, route updates **164** may be transmitted to the AV **100** in order to cause the AV **100** to alter a current route, or begin a new route to a destination. For example, the AV **100** may be servicing a pick-up request along an optimal route when the backend system **195** transmits a route update **164** to the AV **100** in order to form a mesh network with one or more proximate AVs **196** to maintain communication connectivity with the backend system **196**. Proximity data **165** can be transmitted to the AV **100** indicating one or more proximate AVs **196** with which the AV **100** can create a mesh network. Additionally or alternatively, the proximity data **165** can indicate base station locations to enable the AV **100** to maintain network connectivity and perform handoffs to other base stations.

Video and audio data **167** can include interior video of the passenger(s), or streaming content over a connected network (e.g., a WiFi network). In some aspects, the AV **100** can include on-board WiFi (i.e., IEEE 802.11b channels) for the passenger(s) to connect to the Internet. Thus, the AV **100** can transmit and receive communications and data (e.g., Internet content) simultaneously over multiple channels by configuring the multi-channel communications subsystem **130** accordingly. For example, the user can configure a personal computer or mobile device to connect to the AV's **100** on-board WiFi, which can trigger the communications controller **140** to generate a configuration command **141** to switch on a WiFi module of the multi-channel communication subsystem **130** in order to provide Internet access to the passenger(s). As an addition or alternative, the AV **100** itself can include a touch-screen and a computing system that enables the passenger(s) to access the Internet.

Network latency data **168** can be communicated from the AV **100** to the backend system **195** in order to enable the backend system **195** to update a network resource map. Furthermore, cost data can also be transmitted to the backend system **195**, where the cost data can indicate costs associated with connecting to each of the networks along a particular route. The latency data **168** and cost data can be received by the backend system **195** from any number of the AVs **100**, **196** in the fleet, and can be utilized by the backend system **195** to continuously update the network resource map and network log data in order to calculate optimal routes based on both communication quality and communication costs.

In many aspects, the communications **160** can further include data indicating instantaneous network bandwidth. For example, the backend system **195** can receive localized instantaneous bandwidth information from various AVs traveling throughout a given region. As a dynamic process, the backend system **195** may then utilize this instantaneous data to generate and transmit communication system configuration data to applicable AVs throughout the given region in order to optimally configure their communication systems **150** accordingly. As such, these optimal configurations can enable the AV **100** to take advantage of readily available bandwidth while preemptively avoiding crowded networks.

Additionally or alternatively, the communications **160** can include data indicating one-way latencies and/or bandwidths

from the AV 100 to the backend system 195 and/or the backend system 195 to the AV 100 to further optimize communication system 150 configurations. Thus, the backend system 195 or the AV 100 itself can generate configuration commands 141 dynamically to optimize the configurations of the communication system 150 for one-way data transmissions. Still further, in certain implementations, the communications 160 can include network jitter data indicating variations in the delay of received data packets. The backend system 195 can utilize this jitter data to, for example, identify bandwidth variation patterns and/or respond dynamically to the jitter data by optimally configuring the communication systems 150 of AVs traveling throughout the given region, as described herein.

Various alerts 169 can be transmitted and received by the AV 100. The alerts 169 can include information ranging from emergency communications, road accident or traffic alerts, construction alerts, road quality alerts, and the like. Furthermore, these alerts 169 can be prioritized by the AV 100 to be transmitted on a most reliable network by default.

Likewise, sub-map updates 175 can be detected and/or processed by the AV 100 and then transmitted to the backend system 195 to maintain up-to-date sub-maps for the given region. As an example, the AV 100 and proximate AVs 196 can utilize sub-maps to compare to sensor data in order to maintain situational and positional awareness. Constant data processing may be required by the AV 100 in order to maintain an awareness of other vehicles, roads, pedestrians and bicycles, traffic signals, road signs, etc. Furthermore, continuous localization is required for the AV 100 to determine a current location and orientation by mapping the sensor data, detected by a sensor array of the AV 100, to stored sub-maps previously recorded by other AVs or sensor vehicles. On occasion, the sub-maps can be updated to reflect software/hardware updates and road construction updates. Accordingly, certain AVs can include sensor arrays to provide sub-map updates 175 to the backend system 195, which can then transmit updated sub-maps to the other AVs in the fleet.

Furthermore, the AV 100 can receive transport commands 170 to direct the AV 100 to travel to a destination (e.g., a pick-up or drop-off location). For example, the AV 100 may be utilized for the delivery of commerce items and/or the transportation of passengers for any number of reasons. In certain implementations, the transport commands 170 can be generated by the backend system 195—as described below with respect to FIG. 3. Furthermore, the transport commands 170 can be processed by an on-board AV controller that operates the acceleration, braking, and maneuvering systems of the AV 100 in order to drive the AV 100 to respective instructed locations and destinations.

Additionally, the AV 100 can receive connection commands 172 from the backend system 195 that cause the AV 100 to establish connections with respective networks along an optimized route. The connection commands 172 can cause the AV 100 to connect with one or multiple networks at any given time, and communicate with the backend system 195 over any of the connected networks. Along these lines, the AV 100 can receive communication commands 173 from the backend system 195 indicating which particular connection to use when communicating different types of data. For example, the backend system 195 can prioritize certain types of data communications with the fleet of AVs (e.g., emergency communications or ACKs), and command the AV 100 to cache non-essential data (e.g., sub-map updates 175).

On occasion, the backend system 195 may be provided with upgrade data for transmission to the AV 100 (and the fleet of AVs). This upgrade data can include software updates 174 for the AV's 100 on-board computing and control systems. The software updates 174 can comprise patches to upgrade security or fix bugs, upgrades to on-board computer programs and supporting data, and the like.

FIG. 2 is a block diagram showing an example AV 200 in communication with a number of proximate AVs 260 and a backend system 250. As shown in FIG. 2, communications 252 (such as the communications 160 described in connection with FIG. 1) are transmitted and received between the AV 200, proximate AVs 260, and the backend system 250. The backend system 250 can include a transport facilitation engine 255 that generates and transmits transport commands 170 and manages a fleet of AVs within a given region. For any given AV (e.g., AV 200) in the managed fleet, the transport commands can be received by the AV's communications array 245, which is operated by the AV's 200 communication system 235. The communication system 235 can transmit the transport commands to an AV control system 220, which can operate the acceleration, steering, braking, lights, signals, and other operative systems 225 of the AV 200 in order to drive and maneuver the AV 200 through road traffic to destinations specified by the transport commands.

In many examples, the transport commands can include route data 232, which can be processed by the AV control system 220 in order to maneuver the AV 200 along a given route (e.g., an optimized route calculated by the backend system 250) to the specified destination. In processing the route data 232, the AV control system 220 can generate control commands 221 for execution by the operative systems 225 of the AV 200 (i.e., acceleration, steering, braking, maneuvering) in order to cause the AV 200 to travel along the route to the destination.

The destination itself may be specified by the backend system 250 based on user requests (e.g., pick-up or delivery requests) transmitted from user devices (e.g., a user's smartphone executing a designated application). Additionally or alternatively, a passenger 219 of the AV 200 can provide user input(s) 217 through an interior interface system 215 of the AV 200 to specify a destination 219. In certain implementations, the AV control system 220 can transmit the inputted destination 219 as a communication 252 to the backend system 250, which can process a current location of the AV 200 (e.g., a GPS data packet) and the inputted destination 219, and perform an optimization operation to determine an optimal route for the AV to travel to the destination 219. Route data 232 comprising the optimal route can be transmitted back the AV control system 220, which can consequently maneuver the AV 200 through traffic to the destination 219 along the optimal route.

Additionally or alternatively, the route data 232 comprising the optimal route can be automatically inputted into an on-board mapping engine 275 that can provide map content 226 to the interior interface system 215. The map content 226 can indicate an estimated time of arrival and show the AV's 200 progress along the optimal route. The map content 226 can also display indicators, such as reroute commands, emergency notifications, traffic data, and the like.

Additionally, in response to a user input 217 to request network access (e.g., access to the Internet), the interior interface system 215 can generate an access request 229, which can be processed by the communication system 235 to configure the communications array 245 to transmit and receive data corresponding to the passenger's 219 interac-

tions with either the interior interface system **215** or a personal device of the passenger's **219** (e.g., a personal computer, smartphone, tablet computer, etc.). For example, the AV **200** can include on-board WiFi, which the passenger (s) **219** can access to send and receive emails or personal messages, stream audio or video content, browse web resources, or access application services requiring network access. Based on the user interactions, content **227** can be received using the communications array **245** and via one or more currently connected networks. The communication system **235** can dynamically manage the passenger's **219** network access to avoid or minimize disruption of the content **227**.

According to examples described herein, the AV **200** can further include a sensor array **205** comprising any number of live sensors for dynamically detecting the surroundings of the AV **200** while the AV **200** is in motion. The sensor array **205** can include various types of feature sensors, proximity sensors, distance sensors, depth sensors, and landscape sensors such as radar equipment, light detection and ranging (LiDAR) equipment, infrared, electromagnetic, or photo-electric proximity sensors, stereo cameras, and the like. Raw sensor data **207** from the sensor array **205** can be processed by an on-board data processing system **210** of the AV **200**.

The AV **200** can further include a database **230** that includes sub-maps **233** for the given region in which the AV **200** operates. The sub-maps **233** can comprise detailed road data previously recorded by a recording vehicle using sensor equipment, such as LiDAR, stereo camera, and/or radar equipment. In some aspects, several or all AVs in the fleet can include this sensor equipment to record updated sub-maps **233** along traveled routes, and submit the updated sub-maps **233** to the backend system **250**, which can transmit the updated sub-maps **233** to the other AVs in the fleet for storage. Accordingly, the sub-maps **233** can comprise ground-based, three-dimensional (3D) environment data along various routes throughout the given region.

In many aspects, the on-board data processing system **210** can provide continuous processed data **213** to the AV control system **220** to respond to point-to-point activity in the AV's **200** surroundings. The processed data **213** can comprise comparisons between the actual sensor data **207**—which represents an operational environment of the AV **200**, and which is continuously collected by the sensor array **205**—and the stored sub-maps **233** (e.g., LiDAR-based sub-maps). In certain examples, the data processing system **210** is programmed with machine learning capabilities to enable the AV **200** to identify and respond to conditions, events, or potential hazards. In variations, the on-board data processing system **210** can continuously compare sensor data **207** to stored sub-maps **233** in order to perform a localization to continuously determine a location and orientation of the AV **200** within the given region. Localization of the AV **200** is necessary in order to make the AV **200** self-aware of its instant location and orientation in comparison to the stored sub-maps **233** in order to maneuver the AV **200** on surface streets through traffic and identify and respond to potential hazards, such as pedestrians, or local conditions, such as weather or traffic conditions.

Furthermore, localization can enable the AV **200** to tune or beam steer the communications array **245** in order to maximize communication link quality and minimize interference with other communications from other AVs (e.g., the proximate AVs **260**). In certain examples, the communication system **235** can beam steer a radiation pattern of the communications array **245** in response to network configuration commands received from the backend system **250**. In

some implementations, the database **230** can store an up-to-date network resource map **237** that identifies network base stations and other network sources that provide network connectivity. For example, the network resource map **237** can indicate locations of base stations and available network types (e.g., 3G, 4G LTE, WiFi, etc.) providing network coverage throughout the given region.

By performing localization, the AV control system **220** can compare the AV's **200** location and orientation to the network resource map **237** to configure the communications array **245**. For example, the communications array **245** can comprise any number of unidirectional antennas and/or tunable antennas (e.g., a phased array). After determining a current position and orientation in relation to proximate base stations identified in the network resource map **237**, the AV control system **220** can provide the communication system **235** with array configuration data **222** in order to tune or beam steer a radiation pattern of the communications array **245** to transmit and receive data in the direction of a selected base station.

For example, the communication system **235** can dynamically perform ray tracing operations as the AV **200** travels throughout the given region. The ray tracing operations can be performed by utilizing the localization data (i.e., the current location and orientation which is continuously or periodically determined by the AV **200**), and comparing the localization data with the network resource map **237** to identify proximate base stations. Other data, such as cost data and network latency data, can be extrapolated from the network resource map **237** to determine the available networks with which the AV **200** is to connect. When the networks are selected, the communication system **235** can beam steer a radiation pattern of the communications array **245** (e.g., a phased array or tunable antenna) in the direction of the base station source of the selected network(s).

In some examples, the network resource map **237** may indicate "dead zones," or network-limited areas, that do not have the necessary bandwidth required for the backend system **250** to ensure safe and reliable routing and management of the fleet of AVs. In such examples, prior to the AV **200** entering these dead zones, the transport facilitation engine **255** of the backend system **250** can coordinate the proximate AVs **260** and the AV **200** to form an AV2AV network, or a mesh network, to hop communications to a specified base station, which can transmit the communications to the backend system **250**. Furthermore, since cost and network latency/reliability are major factors in communications, the backend system **250** can coordinate the AV **200** and proximate AVs **260** to dynamically form mesh networks in order relay communications through optimal lowest-cost/highest bandwidth networks.

The communications array **245** of the AV **200** can be configured for data transmissions over multiple channels simultaneously. Each channel can correspond to a current network connection having an associated cost, bandwidth availability, and communication reliability. Accordingly, communications themselves may be prioritized for transmission over the various channels based on a significance or value of each communication. Emergency communications, such as accident alerts or commands to halt the AV **200** can have a highest priority. These communications, when generated by the AV **200** or the backend system **250**, can be transmitted over a most reliable network regardless of cost. On the other hand, traffic updates transmitted from the AV **200** to the backend **250** can have a relatively low priority, and can either be transmitted via a lowest cost network, or can be discarded if a cost threshold is not met.

The communications array **245** can comprise one or more omnidirectional antennas for transmitting and receiving data over any number of network types (e.g., WiFi, 4G, 4G LTE, and the like). Additionally or alternatively, the communications array **245** can comprise a plurality of unidirectional antennas which can be utilized to direct communications in a corresponding plurality of directions. Additionally or alternatively still, the communications array **245** can comprise a phased array that can be configured by the communication system **235** to adjust resonance and/or radiation pattern in order to focus communications in one or more particular directions (e.g., towards a proximate AV **260** to establish a mesh network or a particular base station). Accordingly, the communication system **235** can configure the phased array to connect with a plurality of active networks by dynamically beam steering a radiation pattern of the phased array towards one or more base stations that provide the plurality of active networks as the AV **200** maneuvers through road traffic. Still further, the communications array **245** can include one or more tunable antennas that include conductive liquid metal that can be excited (e.g., using inputted voltage signals at a number of voltage points on the tunable antenna) to change length and shape, and thus adjust a resonance and radiation pattern.

In the above description of FIG. 2, certain operations may be performed interchangeably by the backend system **250** or the AV **200** in order to load balance between on-board processing capabilities of the AV **200** and network availability and/or data transmission costs. For example, upon receiving an transport command, the AV **200** itself can utilize the network resource map **237** to perform an optimization operation to determine an optimal route to the destination indicated in the transport command. The optimization operation can utilize connectivity and data transmission costs, network latency information, road traffic and estimated time of arrival (ETA) data, and the like. Furthermore, in certain implementations, the AV **200** (as opposed to the backend system **250**) can identify proximate AVs **260** and establish mesh networks automatically when the AV **200** travels through the identified dead zones.

FIG. 3 is a block diagram showing an example backend system **300**, or transportation facilitation system, in communication with a number of user devices **385** and AVs **390**. The backend system **300** can be implemented, for example, as the backend system **250** described in connection with FIG. 2. Referring to FIG. 3, the backend system **300** can include a database **330** that stores network resource maps **332** for a given region. The database **330** can further store dynamically updated correlation data **334** between base stations on the network resource maps **332** and network latency/costs to enable a route optimization engine **360** to determine optimal routes for the AVs **390**.

In many aspects, the backend system **300** can communicate with user devices **385** over one or more networks **375**. For example, the user devices **385** can store a designated application **386** specific to requesting transportation via the backend system **300**. Upon launching the designated application **386**, a user device **385** can establish a connection with the backend system **300** and the user can submit a pick-up request **387**. The pick-up request **387** can be received by a device interface **315** of the backend system **300**. The device interface **315** can transmit a pick-up location **317** and an inputted destination **319** from the pick-up request **387** to a transport facilitation engine **350** of the backend system **300**.

Furthermore, the backend system **300** can communicate with a fleet of AVs **390** (shown as AV1, AV2 . . . , AVN) via the one or more networks **375**. The AVs **390** can periodically

transmit their AV locations **373** over the network(s) **375**, which can be received by a communication interface **305** of the backend system **300**. The communication interface **305** can transmit the AV locations **373** to the transport facilitation engine **350** to enable the transport facilitation engine **350** to identify and select an AV (e.g., AV1) from the fleet of AVs **390** to service the pick-up request **387**.

The transport facilitation engine can utilize the pick-up location **317**, the AV locations **373**, and/or ETA data **371** from a mapping resource **340** to select one of the AVs **390** to service the pick-up request. In many implementations, a closest available AV, or an AV with shortest ETA, is selected by the transport facilitation engine **350** to service the pick-up request **387**. Accordingly, the transport facilitation engine **350** can generate and transmit a transport command **351** to the selected AV to pick-up the requesting user.

According to examples described herein, the transport facilitation engine **350** can submit the pick-up location **317** and destination **319** (the "endpoints" **353**) to the route optimization engine **360**. The route optimization engine **360** can identify a plurality of route options **367** between the pick-up location **317** and the destination **319**. These route options **367** can be forwarded to a communications prediction module **320**, which can utilize the route options **367** to make data calls **362** to the database **330** in order to look up communication requirement data **336** along each of the route options **367**, and base station data **333** from the stored network resource maps **332**. The communications prediction module **320** can determine the communications requirements **336** of the selected AV, and can provide the route optimization engine **360** with communications data **322** for each of the routes **367**.

In many examples, the communications data **322** can include connectivity and data transmission requirements along each of the route options **367**. For example, the communication prediction module **320** can utilize historical data **335** indicating how much communication is necessary between AVs **390** and the backend system **300** based on a time of day (e.g., rush hour), a time of week (e.g., weekends vs. weekdays), typical traffic conditions, pedestrian conditions, venues and/or places of business along the routes **367** (e.g., a sporting facility housing popular sporting events, a popular night club, hospitals, business buildings, etc.), scheduling information (e.g., sporting schedules, business hours, etc.), and types of routes (e.g., highways, one-way streets, whether a particular road along a respective route includes street parking, whether there are bicycle lanes along a respective route, a number of lanes and lane changes per route segment, a number of route segments or street changes, and the like).

Additionally, the communications data **322** can include cost data indicating predicted costs of communicating over connected networks along each of the route options **367**. For example, the communications prediction module **320** can extrapolate, for each of the route options **367**, the number of networks available along the route, the types of available networks (e.g., 900 MHz unlicensed, 3G and/or 4G, 4G LTE, WiFi, WiMax, WiGig, DSRC, etc.), and costs associated with connecting to and transmitting/receiving data over the course of each of the possible route options **367**.

In some aspects, the communications prediction module **320** can utilize (i) the cost data for each of the route options **367**, and (ii) the connectivity and data transmission requirements for each of the route options **367**, in order to provide a predicted cost for each of the route options **367** for the predicted communications **336**. The predicted costs for each of the route options **367** can be included in the communi-

cations data 322 and submitted to the route optimization engine 360, which can perform an optimization operation to select an optimal route 363 from the plurality of route options 367. As such, the optimal route 363 need not necessarily be the lowest cost route indicated in the communications data 322.

According to many examples, the route optimization engine 360 can utilize the communications data 322—which can include the cost data for each possible route 367—and can also make map calls 361 to the mapping resource to select the optimal route 363. Specifically, the route optimization engine 360 can utilize the endpoints 353 between the pick-up location 317 and the inputted destination 319 in order to make a map call 361 to the mapping resource 340 to identify map data 343, traffic data 341, and/or ETA data 371. The route optimization engine 360 can perform the optimization operation by determining a shortest ETA/lowest cost, or lowest traffic/lowest cost calculation among the route options 367. For example, a lowest cost route may have a relatively long ETA, and thus the optimization operation may sacrifice some additional cost for a shorter ETA. Conversely, a shortest ETA may have a relatively high cost, and thus the optimization operation may sacrifice time for savings.

In some aspects, the route choice may be made by the requesting user when the selected AV makes the pick-up. The requesting user may be presented with the route options 367, and a predicted cost may be associated with each of the plurality of route options 367. For example, when the requesting user is picked up by the AV, the requesting user may be prompted on an interior interface display of the AV to select one of the route options 367. Each of the route options 367 can be displayed with a predicted cost and an ETA, and the user can decide which of the route options 367 is preferred. A user selection of a route can cause the selected AV to initiate travel to the destination along the selected route.

In other aspects, the route optimization engine 360 selects the optimal route 363 based on the performed optimization operation. After the transport facilitation engine 350 sends the transport command 351 to the selected AV to service the pickup request 387, the route optimization engine 360 can transmit data corresponding to the optimal route 363 to the selected AV via the communication interface 305. Upon picking up the requesting user, the selected AV can travel to the destination along the optimal route 363. Furthermore, based on the communications data 322 provided to the route optimization engine 360 by the communications prediction module 320, the backend system 300 can transmit network configuration commands 354 to the selected AV to indicate where, along the optimal route 363, the selected AV is to connect with selected networks, and transmit and receive different types of communications over those networks.

The backend system 300 can further include a tracking and updating system 310 (described in detail with respect to FIG. 5 below). The tracking and updating system 310 can track the AV locations 373 to identify when a specified AV will enter a dead zone, or network-limited area as identified on the network resource maps 332. In response, the tracking and updating system 310 can generate network configuration commands 354 to cause particular AVs 390 to establish mesh networks with other AVs in order to relay communications between the “off-network” AV and the backend system 300. Furthermore, for crowded networks, the tracking and monitoring system 310 can generate network configuration commands 354 to cause certain AVs to “throttle down” communications or data streaming when a particular network is

stressed. For example, a 4G LTE network can encompass a portion of the given region that has high auto traffic and high pedestrian traffic, which may require additional communications between the AVs 390 and the backend system 300. The tracking and updating system 310 can identify the crowded network and transmit network configuration commands to cause AVs in the crowded network area to reduce bandwidth usage (e.g., throttle down Internet data transmission to user devices of passengers within the AVs) in order to free up bandwidth for necessary communications between the AVs 390 and the backend system 300.

Additionally or alternatively, the tracking and updating module 310 can further receive sub-map updates, network cost updates, and network latency updates from the AVs 390 throughout the given region. The tracking and updating module 310 can compare the foregoing updates to currently stored data, and update stale data accordingly, as described below with respect to FIG. 5.

Referring to FIG. 3, as provided herein, the backend system 300 can manage the fleet of AVs 390 across a given region (e.g., a given city, land area, or population of users). The communications prediction module 320 can utilize the network resource maps 332 which can indicate various areas through the given region where differing types of networks are available. The network resource maps 332 can comprise one or more spectrum heat maps that indicate network coverage strength for network types originating from base stations located throughout the given region.

In various examples, the stored resource or heat maps 332 can be in varying resolutions and/or may refer specifically to road segments or even road lanes throughout the given region. In some aspects, these heat maps 332 can contain, for each network, an average bandwidth, an average latency, and average packet loss, and/or network jitter. Furthermore, the spectrum heat maps 332 can comprise separate values for each direction of transmission between the AVs 390 and the backend system 300. Still further, the backend system 300 can collect the above network quality data over the course of multiple days and store separate heat maps 332 indicating such network data for use at different times of the day (e.g., rush hour versus the middle of the night). Additional examples include separate spectrum heat maps 332 containing network quality data for different times of the week, (e.g., weekends versus weekdays) and/or separate heat maps 332 for different times of the year (e.g., seasonal heat maps 332). In still further examples, separate spectrum heat maps 332 can be linked to particular scheduled events in a given city or region that may affect both network and physical traffic in the given region. For example, the backend system 300 can store an individual, localized spectrum heat map 332 for use when a particular sporting event (e.g., an American football game) is in occurrence.

The communications prediction module 320 can dynamically receive this network quality data corresponding to each of the network types from the fleet of AVs 390 traveling throughout the given region. In response, the communications prediction module 320 can dynamically update the network resource maps 332 (e.g., the spectrum heat maps) to indicate the network quality data. As used herein, the network quality data can include, for each network, an average bandwidth, an average latency, and average packet loss, and/or network jitter, and can further include separate values for each direction of transmission between the AVs 390 and the backend system 300 and/or timing data linked to the foregoing data. In many examples, upon identifying a particular pick-up location 317 and destination 319, the backend system 300 can utilize the updated spectrum heat

map to (i) determine the optimal travel route **363** from the pick-up location **317** to the destination **319**, and (ii) identify a plurality of the base stations and a corresponding plurality of network types with coverage along the optimal travel route **363**.

In some aspects, the communication prediction module **320** can determine an optimal connection schedule **364** for the selected AV prior to the AV traveling from the pick-up location **317** to the destination **319**. The optimal connection schedule **364** can indicate location points along the optimal travel route **363** at which the selected AV is to switch from a previous network connection to a succeeding network connection. Thus, the communications prediction module **320** can perform an optimization technique to address connection and transmission costs, signal strength and/or quality, and network type, and location points along the optimal route **363** in order to generate the connection schedule **364** for the selected AV. The backend system **300** can transmit the connection schedule **364** to the selected AV to enable the selected AV to connect with the selected networks at the appropriate locations along the optimal route **363**.

Accordingly, the backend system **300** can determine the optimal connection schedule **364** by identifying, from the spectrum heat map (i.e., a network resource map **332**), a string of networks along the optimal travel route **363** that have a highest respective bandwidth, or highest signal strength. Additionally or alternatively, the backend system **300** can determine the optimal connection schedule **364** by identifying, from the spectrum heat map (i.e., a network resource map **332**), a string of networks along the optimal travel route **363** that have a lowest respective connection and data transmission cost above a minimum network bandwidth threshold (e.g., 300 Mbps).

In certain examples, the available networks may cover the entirety of the given region. In other examples, dead zones where limited network connectivity exists may be identified within the given region. To mitigate the lack of communication when AVs **390** travel through these dead zones, the transport facilitation engine **350** can include a route tracking functions by utilizing the AV locations **373**. The transport facilitation engine **350** can identify when certain AVs in the fleet are to travel through a dead zone, and utilize currently planned routes for other AVs near the dead zone in order to facilitate establishing a mesh network in order to transmit and receive communications while the AVs travel through the dead zone(s). Accordingly, the transport facilitation engine **350** can transmit reroute commands **365** to the AVs **390** at any given time in order to facilitate a mesh network to “hop” communications to an available network so that a connection between the backend system **300** and each of the fleet of AVs **390** may be continuous.

The reroute commands **365** may simply command an AV to slow down or speed up in order to act as a network node between an AV in a dead zone and a base station. Additionally, the reroute commands **365** can cause a particular AV to make a detour in order to facilitate and establish a reliable mesh network. Accordingly, connectivity between the AVs **390** can be established by utilizing communication resources of the AVs **390** themselves (e.g., DSRC resources). Also, as network nodes, the AVs **390** can aid other AVs **390** with not only communication through dead zones, but also with lowering costs by hopping communications to a less expensive network.

FIG. 4 illustrates an example network resource map **400** utilized by an example backend system and/or example AVs **420** in communication with the example backend system **300**, as described herein. In the below description of FIG. 4,

the network resource map **400** can encompass a given region, such as a datacenter region **405** managed by an example backend system **300** described in connection with FIG. 3. Furthermore, the network resource map **400** can be a network resource map **332** stored in the database **330** of the backend system **300** of FIG. 3. Still further, in certain implementations, the network resource map **400** can be utilized by AVs **420** themselves, and thus locally stored as, for example, the network resource map **237** described in connection with the AV **200** of FIG. 2.

Referring to FIG. 4, the network resource map **400** can indicate base station locations for any number of network types. As shown, certain base stations can include network hardware for multiple different network types, such as, for example, 3G, 4G, 4G LTE, WiFi, etc. Additionally, certain base stations can be specialized for specific network types, and thus include only hardware for that particular network (e.g., microwave relay tower **411** for microwave WiFi or WiGig communications). For illustrative purposes, the network resource map **400** includes AVs **420** currently traveling throughout the datacenter region **405**.

At any given time, the AVs **420** can switch between base stations and/or between networks provided by the base stations. For example, a selected AV **422** may be traveling south on Interstate 579 in Pittsburgh through a coverage area of WiFi Broadcasting Station K **415**, which provides available communications channels in the 2.4 GHz ISM frequency bands. Communications over network(s) provided by WiFi Broadcasting Station K **415** may incur associated costs. UHF Tower Z **417**, providing available communication channels in the 900 MHz unlicensed band, can provide network connectivity and data communications with the backend system **300** for far less cost. However, the communications may be less reliable. Accordingly, as the selected AV **422** enters the network coverage area for UHF Tower Z **417** (providing available communication channels in the 900 MHz unlicensed band), the selected AV **422** can switch to the 900 MHz frequency band to transmit certain types of lower priority data via UHF tower Z **417**.

In certain examples, the selected AV **422** may still transmit certain types of data over the WiFi network(s) via WiFi Broadcasting Station K **415**. For example, certain types of data may have a higher priority, such as emergency communications or status updates. Conversely, other types of communications may have a lower priority, such as sub-map updates—which can be transmitted, for example, at the end of the day when networks are less crowded. According to examples provided herein, while the selected AV **422** is connected with both WiFi Broadcast Station K **415** and UHF Tower Z **417**, the selected AV **422** can transmit and receive higher priority data (e.g., alerts, status updates, route updates, user requests, etc.) with the backend system over the WiFi network via WiFi Broadcasting Station K **415**, and lower priority data (e.g., traffic data, sub-map updates, interior video/audio data, etc.) over the unlicensed radio band via UHF tower Z **417**.

In various aspects, AVs **420** traveling throughout the datacenter region **405** can switch between networks and base stations dynamically based on network configuration commands transmitted to the AVs **420** by the backend system **300**. As discussed herein, the network configuration commands can be generated based on connection and data transmission costs, signal strength, network latency data, base station proximity, mesh network availability, and the like. In variations, the AVs **420** can perform ray tracing and optimization operations to dynamically switch between networks and base stations based on the foregoing parameters.

Further shown in FIG. 4, is a mesh network 440 between AVs that opt to utilize a less costly network offered by Broadcast Station N 407 as compared to the Microwave Relay Tower Z 411.

Whether selected by the backend system or the AVs 420 themselves, the AVs 420 can connect to various network types provided by various base stations. Certain AVs 420 can travel through areas having coverage by one or multiple base stations (e.g., Broadcast Station N 407, offering network connectivity for 3G, 4G, and 4G LTE network types, or Broadcast Station F, offering connectivity for WiMax). In certain implementations, the AVs 420 may travel through network-limited areas or dead zones. These instances may be identified when the optimal routes are calculated by the backend system 300 or AVs 420 themselves, or may be determined on the fly by either the backend system 300 or individual "off-network" AVs 435 (i.e., AV's that exit available coverage areas). In either case, the off-network AVs 435 can form a mesh network 430 to relay communications to and from the backend system 300 over a network provided via UHF Tower Z 417.

According to examples provided herein, the AVs 420 can include communication arrays 245 that can dynamically direct communications to respective base stations in response to network configuration commands generated by the backend system, or the communications systems 235 of the AVs 420 themselves. The communications arrays 245 of the AVs 420 can include dedicated antennas (e.g., a 4G LTE antenna), multi-channel antennas, omnidirectional antennas, multiple unidirectional antennas, a phased array, and/or a tunable antenna. In the latter examples, the communications systems 235 of the AVs 420 can, in response to network configuration commands, selectively apply voltage to specific antenna points to configure a resonant frequency and/or radiation pattern of the antenna. As such, less power is needed to increase network bandwidth and consequently decrease interference with other transmissions from proximate AVs 260.

The above description in connection with FIG. 4 provides coarse non-limiting examples of AVs 420 traveling throughout the datacenter region 405 merely for illustrative purposes. The network resource map 400 is also shown to broadly indicate coverage areas for base stations and network types for illustrative purposes. Thus, the network resource map 400 shown and described with respect to FIG. 4 is not intended to limit the description provided herein in any way.

FIG. 5 illustrates an example AV tracking and updating system 500 for use in connection with a backend system, such as the backend system 300 shown and described with respect to FIG. 3. Furthermore, the AV tracking and updating system 500 can be implemented as, for example, the tracking and updating system 310 shown and described with respect to FIG. 3. Referring to FIG. 5, the AV tracking and updating system 500 can include a database 530 with network resource maps 532, such as an example network resource map 400 shown and described in connection with FIG. 4. As such, the network resource maps 532 can comprise a spectrum heat map indicating base station locations and corresponding coverage areas for various network types throughout the given region. Furthermore, the database 530 can store correlative data such as cost data 534 that indicate costs associated with connecting to and transmitting data over respective networks throughout the given region. Still further, the database 530 can also store network latency data 536 for each of the networks available throughout the given region.

According to examples described herein, the AV tracking and updating system 500 can include a communication interface 505 to receive communications 597 from a fleet of AVs 590 being sent out and managed by the backend system 300. The communications can be received via one or more networks 575 with which the AVs 590 individually connect while traveling throughout the given region. The tracking engine 550 can utilize a mapping resource 540 to correlate the AV locations 573 with map data 542 to provide location data 551 to a network configuration manager 510 of the AV tracking and updating system 500. The network configuration manager 510 can lookup network data 521 from the network resource maps 532, the network latency data 536, and the cost data 534, and perform an optimization operation to generate connection updates 564 to the AVs 590.

For example, as the AVs 590 are selected and sent out throughout the given region, the network configuration manager 510 can compare the location data 551 of the AVs 590 to update network data 521 stored in the database 530 to further optimize data communications via specified networks in terms of costs, types of communications, network latency, and/or mesh networking. Accordingly, as the AVs 590 travel throughout the region along optimal routes calculated by the backend system 300, the AV tracking and updating system 500 can dynamically identify additional optimal communications options using the location data 551 of the AVs 590 and the updated network data 521 stored in the database 530.

As a dynamic system, the AVs 590 being sent out and traveling throughout the given region can provide updates 568 to the network data 521, such as network latency updates 569 and cost updates 562. For example, as a particular AV (e.g., AV3 593) travels throughout the given region, AV3 593 can connect with various networks 575, including multiple networks at the same time. In addition to providing its AV location 573, AV3 593 can provide latency data for each network with which AV3 593 connects. The latency data can indicate a current transmission quality for a particular network type providing network coverage along the optimal route traveled by AV3 593. AV3 593 can provide the updated latency data (i.e., a latency update 569) to the AV tracking and updating system 500, which can be processed by a log manager 520. The log manager 520 can update the latency data 536 stored in the database 530 with the latency update 569 provided by AV3 593, and flush stale latency data accordingly.

The latency updates 569 can be provided by some or all of the AVs 590 traveling throughout the given region. Thus, the AV tracking and updating system 500 can maintain updated logs comprising each network source utilized throughout the given region and current network latency data 536 for those network sources. Likewise, the updated logs can include current cost data 534 for each network source. The AVs 590 traveling throughout the given region can provide cost updates 532 to the log manager 520 along with the latency updates 569. The cost updates 562 can include current connectivity and data transmission costs for each of the networks. Accordingly, the log manager 520 can also log the cost updates 562 dynamically for each of the networks and flush stale cost data accordingly.

In some aspects, the updated cost data 534 and network latency data 536 (collectively network data 521), can be utilized by the network configuration manager 510 to generate connection updates 564 for the AVs 590. For example, utilizing the network data 521, the network configuration manager 510 can dynamically identify certain network sources that provide unacceptable bandwidth for the com-

munications costs. Furthermore, the network configuration manager 510 can identify alternative network sources throughout the given region, and generate and transmit connection updates 564 for AVs 590 traveling through those coverage areas. The connection updates 564 can command or otherwise direct the AVs 590 to switch to the alternative networks instead of the initially proposed networks (i.e., based on the initial connection schedule 364 transmitted by the backend system 300 as described in FIG. 3).

Additionally or alternatively, certain network areas may lack acceptable bandwidth and/or cost efficiency for available bandwidth. Using the location data 551 (or route data 552 comprising the optimal routes currently traveled by the AVs 590 as calculated by the backend system 300), the network configuration manager 510 can identify a proximate base station 559 providing adequate bandwidth/cost in relation to those network areas. That is, the proximate base station 559 can provide network coverage that is optimal, but outside the identified areas. These areas may be network-limited areas 598 or dead zones, in which communication connectivity is unavailable, or areas where connectivity is available, but the network latency and/or costs for transmitted data over such connections does not meet a certain efficiency threshold.

According to examples described herein, the network configuration manager 510 can create mesh networks 595 amongst AVs 590 to relay communications between AVs 590 to the proximate base station 559. Using the location data 551 for the AVs 590, and the network data 521 identifying the network-limited areas 598, the network configuration manager 510 can identify respective AVs (e.g., AV1 591 and AV2 592) that are traveling into these areas 598, and transmit mesh commands 558 to those AVs 591, 592 in order to establish mesh networks 595 between the AVs 590 to relay communications 597 to the proximate base station 559 for transmission to the backend system 300.

In the example provided in FIG. 5, AV1 591 and AV2 592 travel across a network boundary 599 corresponding to a network coverage area (e.g., a 4G coverage area) from a proximate base station 559, and into a network-limited area 598. Using the location data 551 and/or the route data 552 for AV1 591 and AV2 592, the network configuration manager 510 can generate a mesh command 558 to cause AV1 591 and AV2 592 to establish a mesh network 595 to relay communications 597 to the proximate base station 559 through AV3 593. The mesh command 558 can be transmitted to AV1 591, AV2 592, and AV3 593 prior to traveling into the network-limited area 598 so that the mesh network 595 can be established prior to crossing the network boundary 599 and entering the network-limited area 598.

Example AV tracking and updating systems 500 described in connection with FIG. 5 can be utilized by the backend system 300 of FIG. 3 to provide dynamic connection updates 564 in real-time while AVs 590 are traveling along their calculated optimal routes. Furthermore, the example AV tracking and updating system 500 can maintain updated network data 521 in a database 530 managed by the log manager 520 by way of updates 568 (e.g., network latency updates 569 and cost updates 562) received from the AVs 590 themselves. These updates 568 can be received as part of default periodic transmissions from the AVs 590 or as individual transmissions sent by the AVs 590 when certain thresholds (e.g., cost thresholds or latency thresholds) are exceeded. The updates 568 can indicate that certain coverage areas do not meet predetermined latency and/or cost standards. Accordingly, the network configuration manager 510 can mitigate deficient networks by transmitting connec-

tion updates 564 and/or mesh commands 558 to AVs 590 traveling along routes that would be affected by the deficient networks or dead zones.

Methodologies

FIG. 6 is an example method of managing transportation of a fleet of AVs 390 throughout a given region. In the below description of FIG. 6, reference may be made to like reference characters representing various features of FIG. 3 for illustrative purposes. Furthermore, the method described in connection with FIG. 6 may be performed by an example backend system 300 as described with respect to FIG. 3. Referring to FIG. 6, the backend system 300 can store a spectrum heat map indicating network coverage areas and/or coverage strength for available networks throughout a given region (600). As discussed herein, a given region can be a given area (e.g., a city or geographical area) managed by a datacenter of a transport arrangement service, such as those offered by UBER Technologies, Inc. The spectrum heat map can be a network resource map 332 that is stored locally or accessed remotely. Furthermore, the spectrum heat map can indicate various base station locations throughout the given region (602), as well as network types and coverage areas for those network types (603). In some examples, updatable log records are stored and managed by a log manager of the backend system 300—where the log records indicate current network data, such as connectivity and data transmission cost data and network latency data for each of the networks throughout the given region.

Additionally, the updated network data can be received by the backend system 300 from the AVs 390 being selected and sent out throughout the given region (605). These network updates 369 can indicate signal quality and/or available bandwidth for each of the available networks of the given region. The network updates 369 can include network latency data (607) indicating transmission delays due to, for example, high network traffic. The network updates 369 can further include cost data (608) indicating costs associated with connecting to a particular network and/or transmitting data over the particular network. The backend system 300 can update the spectrum heat map and/or update the log records based on the network updates 369 received from the AV 390 being sent out and traveling throughout the given region (610).

In many aspects, the backend system 300 can receive pick-up requests 387 from requesting users utilizing user devices 385, such as smartphones, personal computers, tablet computers, etc. (615). For example, a requesting user can initiate a designated application on the user device 385 and select a pick-up location 317 (617) and a destination 319 (618), and then submit a pick-up request 387 indicating the route endpoints 353 of the trip. The backend system 300 can identify proximate AVs 390 with respect to the pick-up location 317 (620), and then select and instruct an AV to service the pick-up request 387 (625). In some examples, the backend system 300 selects the AV based on a physical distance from the pick-up location 317. In other examples, the backend system 300 selects the AV based on a shortest ETA by accounting for road conditions and traffic.

In conjunction with or subsequent to instructing the AV to pick up the requesting user, the backend system 300 can determine a travel route for the selected AV to travel through road traffic from the pick-up location 317 to the destination 319 (630). In certain examples, the backend system 300 can run an optimization to select an optimal travel route 363 based on communication requirements of the selected AV, traffic data, travel distance, AV power level, available networks along a plurality of possible routes, cost data, and

network latency data, as described herein. Once a travel route is identified and selected, the backend system 300 can transmit the route data to the selected AV in order to enable the AV to transport the requesting user from the pick-up location 317 to the destination 319 along the optimal route (635).

In many implementations, the backend system 300 can utilize the spectrum heat map and/or updated log records to identify base station locations, available networks (and network types), coverage areas, network quality, and network costs along the optimal route (640). The identification of such network data can be performed in response to receiving the endpoints 353 of the pick-up request 387, or dynamically as the selected AV travels along the optimal route 363 to the destination 319 (described hereinafter). In the former case, the backend system 300 can determine an optimal connection schedule 364 for the selected AV using the network heat map (650). This connection schedule 364 can indicate which networks to connect with (652), and timing data indicating location points along the optimal route 363 at which the selected AV is to connect with those networks (653). Furthermore, in constructing the connection schedule 364 for the AV, the backend system 300 can select particular frequencies or network types for connection based on factors such as distance to base stations (e.g., choosing a RF channel for long distances) or obstructions between certain road segments and base stations.

As provided herein, the connection schedule 364 can set location points along the optimal route 363 for switching connections, dropping connections, and/or connecting with a new network. The connection schedule 364 can further indicate the available networks with which the selected AV is to connect at those location points. The connection schedule 364 can be the result of an optimization performed by the backend system 300 that accounts for the types of data to be transmitted (e.g., prioritized data, non-essential data, ACKs, data updates, route updates, etc.), available bandwidth, cost, predicted communications requirements, and the like. Accordingly, the connection schedule 364 can reflect a lowest cost/highest bandwidth optimization for the route 363. Furthermore, the connection schedule 364 can indicate which types of data to transmit over which particular channels as the selected AV travels along the optimal route 363. Thus, once the backend system 300 determines the optimal connection schedule 364, the backend system 300 can transmit the connection schedule 364 to the selected AV (655).

FIG. 7 is a flow chart describing an example method of managing mesh networks 595 for a fleet of AVs 590 throughout a given region. In the below description of FIG. 7, reference may be made to like reference characters representing various features of FIG. 5 for illustrative purposes. Furthermore, the method described in connection with FIG. 7 may be performed by an example AV tracking and updating system 310 as described with respect to FIG. 3, or the AV tracking and updating system 500 shown and described with respect to FIG. 5. Referring to FIG. 7, the AV tracking and updating system 500 can track locations of selected AVs 590 throughout the given region (700). Further, the AV tracking and updating system 500 can store or access a network resource map 532 (e.g., via a log manager 520) that indicates various base station locations, available networks/network types, and coverage areas throughout the given region (705).

In some aspects, the AV tracking and updating system 500 can identify network-limited areas 598 on the network resource map 532 (710). These dead zones indicate areas in

which communications cannot be transmitted or received directly (i.e., from base station to AV). The AV tracking and updating system 500 can identify AVs 590 traveling into the network-limited areas 598 (715). These AVs may be considered “off-network” AVs, in that they are temporarily without direct connection with the backend system 300. The AV tracking and updating system 500 can identify these off-network AVs based on the travel route (e.g., the optimal travel route 363 determine by the backend system 300 shown and described in connection with FIG. 3) (717). Additionally or alternatively, the AV tracking and updating system 500 can identify the AVs 590 traveling into the network-limited areas 598 dynamically based on received location data 573 from the AVs 590 (718).

In order to mitigate the effects of these network-limited areas 598, the AV tracking and updating system 500 can identify proximate AVs that will have network connectivity when the off-network AVs travel into the network-limited areas 598 (720). These proximate AVs may be determined based on projected intercept points on the network resource map 532 where the proximate AVs will be close enough to relay communications to the backend system 300 via a proximate base station 559. In some aspects, route projections and timing information can be extrapolated for the AVs 598 in the given region based on traffic data and map data 542.

Accordingly, the AV tracking and updating system 500 can identify candidate AVs 590 that have been assigned to service pick-up requests, and that will be within a predetermined distance from the off-network AV when the off-network AV travels into a particular network-limited area 598 (722). In some implementations, the AV tracking and updating system 500 can flag these candidate AVs as potential network nodes that can establish a mesh network 595 to relay communications to and from the off-network AVs. Additionally or alternatively, the AV tracking and updating system 500 can monitor the current routes traveled by candidate AVs (and other AVs within a radius of the off-network AV) as the off-network AV approaches the network boundary 599. The AV tracking and updating system 500 can then identify intercept points along the respective routes where the proximate AVs can establish a mesh network 595 with the off-network AV as it travels into the network-limited area 598 (724).

Prior to the AVs (i.e., the proximate AV(s) and the off-network AV) reaching the intercept points, the AV tracking and updating system 500 transmit network configuration commands to the AVs to establish a mesh network 595 (725). The configuration commands can comprise connection update commands 564 indicating which network(s) with which the proximate AVs are to connect (726). Furthermore, the configuration commands can indicate to the proximate AVs and the off-network AV to configure their on-board phased arrays in order to direct and relay communications from the proximate AVs (acting as network nodes) to the proximate base station 559, which then transmits the communications to the backend system 300 (727). Additionally or alternatively, the configuration commands can instruct the AVs to configure their on-board tunable antennae to direct and relay communications to the proximate base station 559 (728).

For phased arrays and tunable antennae, the configuration commands can include instructions to adjust a radiation pattern in order to narrow a communication link between the AVs themselves and between the proximate AVs and the proximate base station 559 (742). Thus, the AVs can implement beam steering to maintain communication links,

diminish interference, and optimize the mesh network **595**. Additionally or alternatively, the configuration commands can also comprise instructions to select a communication channel and adjust a corresponding resonance of the phased array and/or tunable antenna to further enhance communication quality (**743**).

As described, the AV tracking and updating system **500** can utilize the network resource map **532** to identify base stations near the network-limited areas **598**. Based on the route of the off-network AV and projected line-of-sight vectors between the off-network AV and the proximate AVs, the AV tracking and updating system **500** can identify an optimal proximate base station **559** through which the proximate AVs can relay communications from the off-network AV (**730**). The AV tracking and updating system **500** can project the line-of-sight vectors for the AVs using ray tracing techniques (**732**). For example, using current location and orientation information of the AVs, the AV tracking and updating system **500** can utilize the network resource map **532** and/or 3D LiDAR-based sub-maps for the network-limited area **598**, and perform ray tracing operations between the projected routes of the AVs and a number of base stations with a line-of-sight to at least one of the AVs. Optionally, the ray tracing operations can utilize stored topographic, utility, or other surface maps to identify potential obstructions such as buildings or hills. Based on the ray tracing operations, the AV tracking and updating system **500** can determine one or more optimal base stations and/or channels through which to transmit communications.

The ray tracing operations can be performed prior to the proximate or candidate AVs intercepting the off-network AV. Accordingly, the AV tracking and updating system **500** can simulate the AV routes for when the off-network AV enters the network-limited area **598**, and determine an optimal AV configuration for relaying communications. The simulated AV configuration can include one or multiple hops between the off-network AV and the proximate base station, and several iterations may be simulated before an optimal configuration is determined by the AV tracking and updating system **500**. When an optimal configuration is determined (with optimal line-of-sight vectors calculated as the off-network AV travels through the network-limited area **598**), the AV tracking and updating system **500** can modify the routes of the AVs, or can cause the relative speeds of the AVs to be adjusted in order to match the optimally calculated AV configuration. Accordingly, the AV tracking and updating system **500** can generate and transmit control commands to the AVs instructions one or more of the AVs (i.e., the proximate AVs or the off-network AV prior to entering the network-limited area **598**) to adjust one or more control parameters in order to maintain the calculated configuration (**733**).

In many aspects, the control commands can include commands instructing one or more of the AVs to speed up, slow down, change lanes, etc. Additionally or alternatively, the control commands can include a route update to reroute a particular AV in order to establish a better mesh network **595**. As a dynamic process, the AV tracking and updating system **500** can cause each of the AV to perform minute adjustments, or include an additional AV (e.g., by transmitting a reroute command) to be included as a relay node in the mesh network **595**. Thus, the AVs can be coordinated prior to the off-network AV entering the network-limited area **598**. Accordingly, the AV tracking and updating system **500** can transmit a communication command to the off-network AV, prior to entering the network-limited area **598**, instructing

the off-network AV to relay communications through a number of the selected proximate AVs (**735**).

FIG. **8** is a flow chart describing an example method of selecting optimal channels for an AV using ray tracing operations, as described herein. In the below description of FIG. **8**, reference may be made to like reference characters representing various features of FIG. **5** for illustrative purposes. Furthermore, the method described in connection with FIG. **8** may be performed by an example AV tracking and updating system **310** as described with respect to FIG. **3**, or the AV tracking and updating system **500** shown and described with respect to FIG. **5**. Referring to FIG. **8**, the AV tracking and updating system **500** can store a network resource map **532** for a given region (**800**) that identifies base station locations (**802**), available networks/network types (**803**), and coverage areas for each of the available networks. Furthermore, the AV tracking and updating system **500** can receive network updates from AVs **590** traveling throughout the given region.

Each of the AVs **590** traveling throughout the given region can perform localization or pose operations to determine a specific location of the AV within the given region and an orientation of the AV at that location (described in detail with respect to FIGS. **10A** and **10B**). The AV tracking and updating system **500** can receive the localization information from a particular AV either dynamically as the AV travels throughout the given region, or periodically (e.g., in accordance with a particular transmission protocol or when the AV has stopped at a stop light) (**805**). As described, the localization information can include the AV's current location within the given region (**807**), and an orientation of the AV (**808**).

Using the network resource map **532** and/or surface level sub-maps for the given region, the AV tracking and updating system **500** can perform ray tracing operations to identify base stations and/or optimal networks with which the AV can connect (**810**). In certain implementations, the AV tracking and updating system **500** can further utilize other surface maps, such as topographic maps to identify potential obstructions in the line-of-sight between the AV and candidate base stations. In addition to the above description of projecting line-of-sight vectors from the AV, the AV tracking and updating system **500** can further identify communications resources of the AV itself. Accordingly, the AV tracking and updating system **500** can determine whether the AV houses omnidirectional antenna(s), a number of unidirectional antennas, dedicated antennas, a phased array, and/or a tunable antenna, and can further determine whether the AV is capable of communicating using any number of communications protocols (e.g., 3G, 4G, 4G LTE, DSRC, WiFi, WiGig, WiMax, 900 MHz bands, and the like). Based on the communication capabilities of the AV, the AV tracking and updating system **500** can determine optimal channels for communications between the AV and the backend system **300** (**813**).

Additionally or alternatively, the AV tracking and updating system **500** can determine signal strengths and/or available bandwidth for each of the channels offered by the proximate base stations (**812**). The AV tracking and updating system **500** can do so by receiving network data from the AV itself, such as received signal strength indication (RSSI) information, or by performing a lookup in historical network data and/or continuously updated data stored in a local database. As described herein, the AV tracking and updating system **500** can receive updated network data from the AVs **590** that indicate current network latency for any number of networks.

In many aspects, the AV tracking and updating system 500 can select a proximate base station and network types with which the AV is to connect based on the current location of the AV (815). The AV tracking and updating system 500 can make these selections based on the available bandwidth of the available networks, the communication resources of the AV itself, the network latency data (817), and/or the cost data (818) for transmitting and receiving communications over each of the available networks. Once the base station(s) and networks are selected, the AV tracking and updating system 500 can transmit array configuration commands to the AV to cause the AV to configure or otherwise tune its communications system in order to connect with the selected base stations and networks (820).

FIGS. 9A and 9B are flow charts describing an example method of selecting optimal routes and connections for AVs throughout a given region. In the below description of FIGS. 9A and 9B, reference may be made to like reference characters representing various features of FIG. 3 for illustrative purposes. Furthermore, the method described in connection with FIGS. 9A and 9B may be performed by an example backend system 300 as described with respect to FIG. 3. Referring to FIG. 9A, the backend system 300 can manage transportation facilitation for a fleet of AVs throughout a given region (900). Furthermore, the backend system 300 can store a network resource map 332 (905) that indicates base station locations (907), available networks/network types (908), and coverage areas for the available networks. The network resource map 332 and/or network logs stored in the database 330 can include additional information about the available networks, such as current network latency data and cost data.

In many implementations, the backend system 300 can receive pick-up requests 387 from requesting users operating user devices 385, such as smart phones, tablet computers, personal computers, and the like (910). Each of the pick-up requests 387 can indicate a pick-up location 317 anywhere in the given region (912), and can indicate a destination 319 (913)—also anywhere in the given region. In response to the pick-up request 387, the backend system 300 can identify proximate AVs in relation to the pick-up location 317, and instruct an AV to pick-up the requesting user (915).

According to examples described herein, the backend system 300 can utilize map data 343 and the network resource map 332 to determine a number of possible routes 367 between the pick-up location 317 and the destination 319 (920). Further, the backend system 300 can utilize historical network and communications data 335 to predict communication requirements for the selected AV for each of the possible routes 367 (925). The backend system 300 may then perform an optimization operation to determine an optimal route for the AV between the pick-up location 317 and the destination 319 (930). The optimization can include various parameters, such as the predicted communications requirements based on historical data 335 (931), the available networks/base stations along the route options 367 (932), the current cost data for transmitting data over those networks (933), and the current network latency of those networks (934). Accordingly, the optimization operation can result in an optimal route that includes networks that provide the necessary bandwidth to transmit the projected communications at a lowest predictable cost.

Thereafter, the backend system 300 can transmit route data for the optimal route 363 to the selected AV (935) over a current network. Furthermore, as provided herein, the backend system 300 can also generate and transmit a con-

nection schedule 364 for the selected AV to connect with the specified networks determined from the optimization (940). As further provided herein, the connection schedule 364 can specify the particular networks (942) and also location points at which the selected AV is to connect with the specified networks (943).

As part of the optimization, the backend system 300 can further identify network-limited areas along each of the possible routes 367 and ultimately select an optimal route 363 that passes through one or more network limited areas (945). As provided herein, the backend system can send out, reroute, alter control commands, or otherwise command proximate AVs to intercept the selected AV in order to establish a mesh network while the selected AV travels through the one or more network-limited areas (950). In some aspects, the backend system 300 can generate a timetable indicating when the selected AV will reach the network limited area(s) (955), and coordinate the additional AVs to establish the mesh network with the selected AV in accordance with the timetable (965).

Once the selected AV and the additional AV(s) are coordinated, the backend system 300 can transmit network configuration commands instructing the AVs to establish a mesh network while the selected AV travels through the network limited area (965). In variations, the backend system 300 can incorporate additional AVs on an as-needed basis to maintain the mesh network. Furthermore, the communications from the off-network, selected AV can be relayed through any number of AVs, and hopped to different base stations over different channels dynamically. Thus, the optimization and connection schedule 364 can instruct the additional AVs to connect, disconnect, and/or hand off communications with the off-network AV dynamically. Accordingly, while the selected AV is traveling within the network-limited area, the backend system 300 can receive communications from the selected AV via the established mesh network(s) (970).

Referring to FIG. 9B, the backend system 300 can also collect network latency data and cost data from the fleet of AVs 390 as they travel throughout the given region (975). Further, the backend system 300 can collect data indicating one-way bandwidth and/or latency between the AVs 390 and the backend system 300 (978). In certain implementations, the backend system 300 can also collect instantaneous bandwidth data 977 from the fleet of AVs 390 (977). And in still further implementations, the backend system 300 can collect network jitter data indicating variations in the delay of received data packets (979).

Utilizing some or all of the foregoing collecting data, the backend system 300 can update data logs to reflect the current network landscape of the given region, and thus maintain an up-to-date, real-time network resource map 332 (980). In certain scenarios, the optimization described herein may yield similar results for specified routes (e.g., routes between a downtown area and a local airport). Along these lines, certain frequented routes may utilize the same networks with the same connection schedule 364. In such scenarios, the backend system 300 can map default routes through these traffic areas based on the previous optimizations (985). The default routes may be refreshed or recalculated after a period of time (e.g., every day). Accordingly, after a certain number of optimizations for similar endpoints achieve the same or similar connection schedule 364, the backend system 300 can automatically set default routes for the given period of time. Thereafter, the backend system 300 can receive pick-up requests 387 indicating those similar endpoints 353 (990), and automatically instruct and send a

proximate AV to service the pick-up request **387** along the default route for those endpoints **353** (**995**).

FIGS. **10A** and **10B** are flow charts describing example methods of channel selection and routing as performed by an example AV, as described herein. In the below description of FIGS. **10A** and **10B**, reference may be made to like reference characters representing various features of FIGS. **1-3** for illustrative purposes. Furthermore, the method described in connection with FIGS. **10A** and **10B** may be performed by an example AV **100** as described with respect to FIG. **1**, or the AV **200** shown and described with respect to FIG. **2**. Referring to FIG. **10A**, the AV **200** itself can utilize a network resource map **237** to select optimal networks to communication with a central transportation management system (e.g., the backend system **300** of FIG. **3**). As described herein, the stored network resource map **237** can comprise a spectrum heat map indicating various base station locations, available networks/network types, coverage areas, and/or approximated visualizations of bandwidth gradients from each available network in the given region.

In certain implementations, the AV **200** can select optimal networks dynamically as the AV **200** travels throughout the given region. The AV **200** can be directed by the backend system **300** to perform any number of tasks by, for example, instructing the AV **200** to deliver commerce items and/or transport passengers by servicing pick-up requests, as described herein. As such, the AV **200** can operate as a point-to-point transport traveling from current locations to destinations (e.g., pick-up locations, inputted destinations, delivery locations, etc.). For each particular "trip" (i.e., an instruction from the backend system **300** to drive from a current location to a certain destination), the AV **200** can select optimal networks utilizing the network resource map **237** prior to route initialization (**1001**), or dynamically as the AV **200** drives to each destination (**1003**).

Furthermore, the AV **200** can select optimal networks to communicate with the central transportation management system for a particular route based on communications requirements along the route (**1004**), based on the available networks along the route (**1005**), based on costs associated with connecting with and transmitting data over each available network (**1007**), and based on network latency data for each of the available networks (**1009**). These data can be stored by the AV **200** itself and updated periodically by, for example, receiving network updates from the backend system **300**. Accordingly, prior to or while the AV **200** travels to a particular destination, the AV **200** can utilize the updated network resource map **237** to plan optimal routes and/or dynamically configure its communications array **245** to connect with the optimal networks along the traveled routes (**1010**).

Dynamic configuration of the communications array **245** can include configuring a plurality of dedicated antennas for dedicated communications protocols (**1011**). For example, the communications array **245** can include dedicated antennas for any number of the following communications protocols: 3G, 4G, 4G LTE, DSRC, unlicensed 900 MHz bands, WiGig, WiMax, WiFi, and the like. When optimal networks are selected by the AV **200**, the AV **200** can configure an on-board communication system **235** to initialize the corresponding dedicated antenna(s) in order to connect with the optimal network(s) and transmit and receive data over the optimal network(s). Accordingly, the communications system **235** can select the specified communication channels utilizing the dedicated antennas to transmit and receive data over the selected optimal networks (**1013**).

Additionally or alternatively, the communications array **245** of the AV **200** can include a tunable antenna **104**, and thus the on-board communication system **235** can configure the tunable antenna to transmit and receive data over the selected optimal network(s) (**1015**). Additionally or alternatively still, the communications array **245** of the AV **200** can include a phased array, and thus the on-board communication system **235** can configure the phased array to transmit and receive data over the selected optimal network(s) (**1017**). For example including a tunable antenna and/or a phased array, the communication system **235** can dynamically configure the tunable antenna and/or phased array as the AV **200** travels throughout the given region. When a next optimal network coverage area approaches, the communication system **235** can select and transmit voltage signals to specified configuration points or nodes of the tunable antenna and/or phased array in order to adjust a resonance and radiation pattern associated with the next optimal network (**1019**).

In many aspects, the AV **200** can receive a transport command from a central transportation management system to drive to a particular location to perform a task, such as servicing a pick-up request (**1020**). Accordingly, the AV **200** can process the transport command and drive to the location (**1025**). Processing the transport command can comprise identifying the location on map content **226** provide by, for example, a mapping engine **275** of the AV **200**. In order to travel to the location (e.g., a pick-up location or destination), the AV **200** can process sensor data **207** from an on-board sensor array **205** that continuously detects a surrounding environment of the AV **200**. Sensor data processing can be performed by an on-board data processing system **210** of the AV **200** by accessing sub-maps **233** of the given region and continuously comparing the sub-maps **233** to the sensor data **207** to, for example, react to pedestrians or road traffic along the route (**1030**).

In certain examples, the sub-maps **233** are compiled by other vehicles or AVs traveling throughout the given region that include sub-map **233** recording equipment, such as radar and/or LiDAR equipment, stereo camera equipment, proximity sensor equipment, and the like. In some cases, the sub-maps **233** can comprise 3D LiDAR-based sub-maps of the given region that include three-dimensional surface data collected for all or nearly all surface roads of the given region. In these cases, the AV's **200** on-board data processing system **210** can, as the AV **200** travels, dynamically compare the sensor data **207** with the stored 3D LiDAR-based sub-maps **233** to operate the acceleration, braking, and steering systems **25** of the AV **200** to maneuver through road traffic to the location (**1033**).

At any given time, the AV **200** can perform a localization operation using the sensor data **207** and the sub-maps **233** (**1035**). This localization operation can be performed as the AV **200** travels, or when the AV **200** is stationary, such as when the AV **200** is parked or stopped at a stoplight. In performing the localization operation, the AV **200** can compare the sensor data **207** to various features of the sub-maps **233** in order to (i) determine a specific location of the AV **200** within the given region (**1037**), and (ii) determine the orientation of the AV **200** at that specific location (**1039**). Localization may be necessary for the AV **200** to determine and react to various aspects of traveling in normal road traffic throughout the given region. For example, sub-map data may have been collect in an lane adjacent to which the AV **200** is current traveling. Localization can enable the AV **200** to recognize this fact, and dynamically compensate for the sensor data **207** processing by, for example, performing

image warping on the sub-maps 233 and/or the sensor data 207 and maintain awareness of potential risks and hazards along a particular route.

Localization can further be utilized by the AV 200 for communications. According to examples described herein, the AV 200 can utilize the location and orientation of the AV 200 in order to perform ray tracing operations to identify proximate base stations and available networks (1040). For example, the AV 200 can utilize the network resource map 237 to identify base station locations proximate to the AV 200, and perform the ray tracing operations from the current location and based on the AV's 200 orientation. The ray tracing operations can project line-of-sight vectors from the communications array 245 of the AV 200 to each proximate base station to identify an optimal base station through which the AV 200 can transmit and receive communications with the backend system 300. Data from such operations can be shared with the backend system 300 or other AVs (e.g., for establishing mesh networks and relaying communications to optimal base stations) in order to optimize total system bandwidth of the given region.

Referring to FIG. 10B, the on-board AV control system 220 can operate the operative systems 225 of the AV 200 (e.g., the acceleration, braking, and steering systems) to drive the AV 200 along a particular route (1050). For example, the AV 200 can travel along a route to a particular location or destination. Prior to or while traveling along the route, the AV can receive network configuration commands from the backend system 300 to connect with a number of active networks along the route. (1055). In some examples, the network configuration commands can be included in a connection schedule generated by the backend system 300 as the result of an optimization operation, and received prior to initializing the route or during route travel (1057).

Based on the network configuration commands and/or utilizing the connection schedule, the AV 200 can configure the communications array 245 to transmit and receive communications 252 over the channels specified (1060). As described herein, the communication system 235 can configure the communications array 245 by configuring dedicated antennas (1061), selected the specified channels (1063), configuring a tunable antenna (1065), and/or configuring a phased array (1067). As further described herein, configuring the communications array 245 can be performed dynamically as the AV 200 travels through and between networks.

In many examples, the AV 200 can receive a transport command from the backend system 300 indicating a location, such as a pick-up location or destination (1070). In response, the AV 200 can process the transport command, as described above, and drive to the location (1075). Furthermore, at any given time, the AV 200 can receive route data from the backend system 300 indicating an optimal route to travel to the location, or between the endpoints of a pick-up request (e.g., the pick-up location and destination) (1080). As further discussed herein, the AV 200 can travel along the optimal route by continuously processing sensor data 207 utilizing stored sub-maps 233 (e.g., LiDAR-based surface maps of the given region) to identify and react to road traffic and potential hazards (1082).

While traveling throughout the given region, the AV 200 can collect network data such as cost data and network latency data for the networks with which the AV 200 connects. In order to maintain an updated network resource map 237, the AV 200, along with other AVs throughout the given region, can transmit the updated network data to the backend system 300 to enable the backend system 300 to

update network logs and provide updated data to the other AVs in the fleet (1085). As provided herein, the network updates can include transmission cost data for each of the connected networks (1087), and network latency data corresponding to transmission delays for each of the connected networks (1089).

FIG. 11 is a flow chart describing an example method of selecting designated channels for specified communications. In the below description of FIG. 11, reference may be made to like reference characters representing various features of FIGS. 3 and 5 for illustrative purposes. Furthermore, the method described in connection with FIG. 11 may be performed by an example backend system 300 implementing an AV tracking and updating system 500 as described with respect to FIGS. 3 and 5. Referring to FIG. 11, the AV tracking and updating system 500 can manage communications between a fleet of AVs 590 and a backend system 300 (1100). In many examples, the backend system 300 can communicate with the AVs 590 using a transmission control protocol (TCP), in which each delivery of a data packet or communication is confirmed with a transmission acknowledgement (ACK), which can be vital to maintain reliable and efficient communications. For each respective AV in the fleet, the AV tracking and updating system 500 can select a designated channel to transmit and receive ACKs (1105). In variations, the communications between the backend system 300 and the AVs 590 can utilize a mixture of TCP (for reliable connections) and user datagram protocol (UDP) (e.g., for lowest latency and optimal performance).

Accordingly, the AV tracking and updating system 500 can generate and transmit a network configuration command to a respective AV to configure its communications system to transmit and receive ACKs over the designated channel (1107). In many examples, the designated channel can be different from channels used for data communications. As such, the designated channel can be a more reliable and/or more expensive channel (1106), or can have a history of having plenty of available bandwidth (1108) in order to ensure prompt transmission of ACKs. The AV tracking and updating system 500 can track the AV locations 573 or routes and consult the network resource map 532 to identify specified channels along such routes that are suitable for ACKs. Thus, the AV tracking and updating system 500 can transmit configuration commands to switch to designated ACK channels as the AV travels between networks.

On the other hand, the AVs 590 and the backend system 300 can transmit and receive normal communications 597 (e.g., data packets) over channels selected via the optimization operation performed by the backend system 300 (1110). For each transmitted data packet, the AV tracking and updating system 500 can initiate or set a timer for a period of time (1112). If no ACK is received at the end of the time period (e.g., 1-2 seconds), the AV tracking and updating system 500 can retransmit the data packet to the respective AV (1114) over the same channel. At the same time, the AV tracking and updating system 500 can transmit ACKs to the AV over the designated ACK channel (1115).

In some examples, if a predetermined number of failed transmissions have occurred for a single data packet, the AV tracking and updating system 500 can transmit that data packet over the designated, more reliable channel, depending on the type of communication. For example, if the data packet is a high-priority communication, such as a reroute or transport command, then the AV tracking and updating system 500 can transmit the data packet over the designated ACK channel. However, if the data packet is a low priority communication, then the AV tracking and updating system

500 can cache (or discard) the transmission until the AV connects with more reliable data networks.

As such, the AV tracking and updating system **500** can perform optimizations of available networks to determine optimal channels to transmit different types of communications (**1120**). This optimization can be performed prior to selecting an optimal route by the backend system **300** (**1121**), or dynamically as the AV travels throughout the given region (**1123**). Furthermore, each specified channel (e.g., high bandwidth/high cost to low bandwidth/low cost channels) can be selected for certain types of communications (e.g., high priority communications, such as ACKs, to low priority communications, such as network updates). As described, the channels for communications can be selected based on network latency data **536** (**1122**) and cost data **534** (**1124**). For example, low priority or regular communications can be transmitted over lower cost and higher latency networks (e.g., lowest cost networks) (**1127**), whereas high priority communications (e.g., ACKs) can be transmitted over higher cost, lower/lowest latency networks (e.g., a highest quality network) (**1129**).

As an example, the AV tracking and updating system **500** can identify a plurality of networks available on a route segment along an optimal route traveled by the AV. The AV tracking and updating system can readily select the highest quality network (e.g., based on historical data) for transmitting and receiving ACKs. For data communications, the AV tracking and updating system **500** can identify available networks, and determine whether a minimum bandwidth threshold is met for each respective communication type (**1130**). For example, while certain available networks may have sufficient bandwidth to transmit location data, they may not be sufficient for streaming audio or video content. Accordingly, the AV tracking and updating system **500** can select these networks for transmitting and receiving location data, and select a higher bandwidth network for streaming audio or video content.

For certain communication types, the AV tracking and updating system **500** can determine that a particular available network does not meet a bandwidth threshold (**1133**), and therefore select a next channel, or a channel that meets a minimum bandwidth requirement for the specified data communications (**1137**). Conversely, if a particular network does meet the bandwidth threshold for certain data communications (**1131**), then the AV tracking and updating system **500** can select that network for transmitting those data communications (**1135**).

Hardware Diagrams

FIG. **12** is a block diagram that illustrates a computer system upon which example backend systems **300** and AV tracking and updating systems **500** described herein may be implemented. A computer system **1200** can be implemented on, for example, a server or combination of servers. For example, the computer system **1200** may be implemented as part of the backend system **300** as shown and described with respect to FIG. **3**, and/or the AV tracking and updating system **500** shown and described with respect to FIG. **5**. Furthermore, in the context of FIG. **3**, the backend system **300** and the AV tracking and updating system **500** may be implemented using an example computer system **1200** such as described by FIG. **12**. The backend system **300** and the AV tracking and updating system **500** may also be implemented using a standalone system or a combination of multiple computer systems as described in connection with FIG. **12**.

In one implementation, the computer system **1200** includes processing resources **1210**, a main memory **1220**, a

read-only memory (ROM) **1230**, a storage device **1240**, and a communication interface **1250**. The computer system **1200** includes at least one processor **1210** for processing information stored in the main memory **1220**, such as provided by a random access memory (RAM) or other dynamic storage device, for storing information and instructions which are executable by the processor **1210**. The main memory **1220** also may be used for storing temporary variables or other intermediate information during execution of instructions to be executed by the processor **1210**. The computer system **1200** may also include the ROM **1230** or other static storage device for storing static information and instructions for the processor **1210**. A storage device **1240**, such as a magnetic disk or optical disk, is provided for storing information and instructions.

The communication interface **1250** enables the computer system **1200** to communicate with the fleet of AVs over one or more networks **1280** through use of wireless electronic links or a wired interface such as an internal and/or external bus. Using the electronic link, the computer system **1200** can communicate with the AVs, such as the AVs **390**, **590**, as shown as described in connection with FIGS. **3** and **5**. In accordance with examples, the computer system **1200** receives location data **1282** and other communications **1284** from the AVs **390**, **590** over the network(s) **1280**. The executable instructions stored in the memory **1230** can include command instructions **1222**, which the processor **1210** executes to select and send out respective AVs throughout the given region to perform certain tasks, such as service respective pick-up requests.

The executable instructions stored in the memory **1220** can also include route optimization instructions **1224**, which enable the computer system **1200** to optimize routes traveled by the AVs based on communication requirements, available networks, and base station locations. Furthermore, the executable instructions can include tracking and updating instructions **1228**, which the processor **1210** can execute to track the locations of AVs **390**, **590** throughout the given region, update network resource maps **532** based on received network updates, and provide route updates to the AVs **390**, **590**. Still further, the executable instructions in the main memory **1220** can include network configuration instructions **1226**, which the processor **1210** can execute to perform dynamic network optimizations as the AVs **390**, **590** travel and provide updated network configuration commands to enable the AVs **390**, **590** to configure their communications systems and connect to optimal networks accordingly. By way of example, the instructions and data stored in the memory **1220** can be executed by the processor **1210** to implement an example backend system **300** of FIG. **3**, and/or and AV tracking and updating system **500** shown and described with respect to FIG. **5**. In performing the operations, the processor **1210** can receive location data **1282** and communications **1284**, and generate and transmit transport commands **1252** and route/network configuration commands **1254** to manage communications and instructions for facilitating transportation for a fleet of AVs **390**, **590**.

The processor **1210** is configured with software and/or other logic to perform one or more processes, steps and other functions described with implementations, such as described in connection with FIGS. **1-11**, and elsewhere in the present application.

FIG. **13** is a block diagram that illustrates a computer system **1300** upon which example AV systems described herein may be implemented. For example, the computer system **1300** may be implemented as part of an on-board

data processing system **210** and/or AV control system **220** of an AV **200**, as shown and described with respect to FIG. 2. As such, any of the example systems described with respect to the AV **200** can be implemented using a single computer system **1300** or a combination of multiple computer systems **1300** as described by FIG. 13.

In one implementation, the computer system **1300** includes processing resources **1310**, memory resources **1320** (including a read-only memory (ROM) and/or a storage device), and a communication interface **1350**. The computer system **1300** includes at least one processor **1310** for processing information stored in memory resources **1320**. The memory resources **1320** include a main memory component, random access memory (RAM) and/or other dynamic storage device, for storing information and instructions which are executable by the processor **1310**. The memory resources **1320** also may be used for storing temporary variables or other intermediate information during execution of instructions to be executed by the processor **1310**. The memory resources **1320** can use ROM or other static storage device for storing static information and instructions for the processor **1310**. A storage device, such as a magnetic disk or optical disk, is provided for storing information and instructions.

The communication interface **1350** enables the computer system **1300** to communicate with one or more networks **1380** (e.g., cellular network) through use of the network link (wireless or a wire). Using the network link, the computer system **1300** can communicate with a backend system **300**, as described with respect to FIG. 3. In accordance with examples, the computer system **1300** receives transport commands and processes sensor data **207** and sub-maps **233** in order to drive the AV **200** to a location (e.g., a destination). The executable instructions stored in the memory **1320** can include (i) sensor processing instructions **1321** for maneuvering the AV **200** through road traffic using sub-maps **233** (“SPI **1321**”), (ii) network selection instructions **1323** for processing network configuration commands or a connection schedule in order to select specified channels at specified location points along a particular route (“NSI **1323**”), and (iii) array configuration instructions **1325** for generating and transmitting voltage signals to the communications array **245** to transmit and receive data over the selected channels (“ACT **1325**”).

Examples described herein are related to the use of the computer systems **1200**, **1300** for implementing the techniques described herein. According to one example, those techniques are performed by the computer systems **1200**, **1300** in response to processors **1210**, **1310** executing one or more sequences of one or more instructions contained in the main memories **1220**, **1320**. Such instructions may be read into the main memories **1220**, **1320** from another machine-readable medium, such as a storage device **1240**. Execution of the sequences of instructions contained in the main memories **1220**, **1320** cause the processors **1210**, **1310** to perform the process steps described herein. In alternative implementations, hard-wired circuitry may be used in place of or in combination with software instructions to implement examples described herein. Thus, the examples described are not limited to any specific combination of hardware circuitry and software.

It is contemplated for examples described herein to extend to individual elements and concepts described herein, independently of other concepts, ideas or systems, as well as for examples to include combinations of elements recited anywhere in this application. Although examples are described in detail herein with reference to the accompanying draw-

ings, it is to be understood that the concepts are not limited to those precise examples. As such, many modifications and variations will be apparent to practitioners skilled in this art. Accordingly, it is intended that the scope of the concepts be defined by the following claims and their equivalents. Furthermore, it is contemplated that a particular feature described either individually or as part of an example can be combined with other individually described features, or parts of other examples, even if the other features and examples make no mention of the particular feature. Thus, the absence of describing combinations should not preclude claiming rights to such combinations.

What is claimed is:

1. An autonomous vehicle (AV) managed by a backend system, the AV comprising:
 - an acceleration, braking, and steering system;
 - a memory to store a spectrum heat map indicating locations of base stations, available network types providing coverage from the base stations, and network quality data of each of the available network types throughout a given region;
 - a communications array to transmit and receive communications from the backend system; and
 - an AV control system to:
 - operate the acceleration, braking, and steering system of the AV to maneuver the AV through road traffic within the given region;
 - perform a localization operation to determine a location and an orientation of the AV relative to proximate base stations within the given region;
 - receive, from the backend system, update data to update at least the network quality data in the spectrum heat map;
 - based on the location and the orientation of the AV relative to the proximate base stations, utilize the updated spectrum heat map, to dynamically select optimal network types from the proximate base stations to connect with the backend system; and
 - dynamically configure the communications array to connect with the optimal network types to transmit and receive the communications with the backend system.
2. The AV of claim 1, wherein the update data for the spectrum heat map comprises updated cost data associated with transmitting data using each of the available network types for each of the base stations, and wherein the AV control system dynamically selects the optimal network types based on the updated cost data.
3. The AV of claim 2, wherein the update data further comprises updated network latency data for each of the available network types, and wherein the AV control system further dynamically selects the optimal network types based on the updated network latency data.
4. The AV of claim 1, wherein the optimal network types comprise a plurality of a 3G, a 4G, a long-term evolution (LTE), a WiFi, a WiMax, a 900 MHz unlicensed, a dedicated short-range communication (DSRC), or a WiGig network type.
5. The AV of claim 1, wherein the AV control system is further configured to:
 - receive a transport command from the backend system to travel to a destination; and
 - forward the transport command to the AV control system.
6. The AV of claim 1, wherein the communications array comprises a phased array, and wherein the AV control system dynamically configures the phased array to connect

35

with the optimal network types by dynamically beam steering a radiation pattern of the phased array towards the proximate base stations.

7. The AV of claim 1, wherein the communications array comprises a liquid metal tunable antenna, and wherein the AV control system dynamically configures the liquid metal tunable antenna to connect with the optimal network types by dynamically beam steering a radiation pattern of the liquid metal tunable antenna to towards the proximate base stations.

8. The AV of claim 1, wherein the memory further includes LiDAR sub-maps for the given region that provide ground-based, three-dimensional (3D) environment data along various routes throughout the given region.

9. The AV of claim 8, further comprising:
a sensor array to continuously collect sensor data representing an operational environment of the AV;

an on-board data processing system to process the sensor data by (i) dynamically comparing the sensor data to the LiDAR sub-maps as the AV travels throughout the given region, and (ii) based on dynamically comparing the sensor data to the LiDAR sub-maps, dynamically perform a localization of the AV within the given region; and

wherein the AV control system utilizes the processed sensor data to operate the acceleration, braking, and steering system of the AV in order to maneuver the AV through road traffic in the given region.

10. The AV of claim 9, wherein the AV control system is further configured to:

receive a transport command from the backend system to maneuver the AV to a destination; and
utilize the processed sensor data to operate the acceleration, braking, and steering system in order to maneuver the AV to the destination.

11. The AV of claim 9, wherein the AV control system is further configured to:

utilize a current location and a current orientation of the AV to dynamically perform ray tracing operations to identify the proximate base stations.

12. The AV of claim 1, wherein the backend system manages routing of a fleet of AVs, the fleet of AVs including the AV, and wherein the fleet of AVs transmit localized update data to the backend system to enable the backend system to update the spectrum heat map.

13. The AV of claim 12, wherein the localized update data comprises at least one of average bandwidth data, average latency data, average packet loss data, or network jitter data.

14. An autonomous vehicle (AV) comprising:

a sensor array to continuously collect sensor data representing an operational environment of the AV;

a communications system operable to communicate with other AVs and a backend system using a plurality of communication protocols;

an on-board data processing system to process the sensor data; and

an AV control system to:

perform a localization operation to determine a location and an orientation of the AV relative to proximate base stations;

while operating the AV along a current route, receive network configuration commands from the backend system to configure the AV control system to connect with a plurality of active networks, the network configuration commands being based on a spectrum heat map and the location and the orientation of the AV relative to the proximate base stations;

36

in response to the network configuration commands along the current route, configure the AV control system to connect with the plurality of active networks;

identify network latency data and cost data for each of the plurality of active networks, the cost data indicating a connection and transmission cost; and
transmit the network latency data and the cost data to the backend system to enable the backend system to update the spectrum heat map.

15. The AV of claim 14, wherein the AV control system is further configured to:

receive a transport command from the backend system to facilitate a pick-up request to transport a requesting user to a specified destination;

maneuver the AV through road traffic using the processed sensor data to pick up the requesting user; and

receive route data from the backend system indicating the current route to the specified destination.

16. The AV of claim 14, wherein the AV control system includes a phased array, and wherein the communication system configures the phased array to connect with the plurality of active networks by dynamically beam steering a radiation pattern of the phased array towards one or more base stations that provide the plurality of active networks.

17. The AV of claim 14, wherein the plurality of active networks comprise a plurality of a 3G, a 4G, a long-term evolution (LTE), a WiFi, a WiMax, a 900 MHz unlicensed, a dedicated short-range communication (DSRC), or a WiGig network.

18. The AV of claim 14, wherein the determined location and orientation of the AV relative to the proximate base stations is based on sensor data to LiDAR sub-maps for a given region, the LiDAR sub-maps provide ground-based, three-dimensional (3D) environment data along various routes throughout the given region.

19. An AV control system for an autonomous vehicle (AV), the AV control system comprising:

a communications array to transmit and receive communications from a backend system;

a memory to store a spectrum heat map indicating locations of base stations, available network types providing coverage from the base stations, and a network quality data of each of the available network types throughout a given region; and

one or more processors to:

perform localization operation to determine a location and an orientation of the AV relative to proximate base stations;

receive, from the backend system, update data to update at least the network quality data in the spectrum heat map;

based on the location and the orientation of the AV relative to the proximate base stations, utilize the updated spectrum heat map, dynamically select optimal network types from the proximate base stations to transmit and receive the communications with the backend system; and

dynamically configure the communications array to connect with the optimal network types to transmit and receive the communications with the backend system.

20. The AV control system of claim 19, wherein the update data comprises updated cost data associated with transmitting data using each of the available network types

for each of the base stations, and wherein the AV control system dynamically selects the optimal network types based on the updated cost data.

* * * * *