



US009937905B2

(12) **United States Patent**
Kim et al.

(10) **Patent No.:** **US 9,937,905 B2**
(45) **Date of Patent:** **Apr. 10, 2018**

(54) **SIDE COLLISION AVOIDANCE SYSTEM AND METHOD FOR VEHICLE**

(58) **Field of Classification Search**
None
See application file for complete search history.

(71) Applicant: **Hyundai Motor Company**, Seoul (KR)

(56) **References Cited**

(72) Inventors: **Jun Soo Kim**, Seoul (KR); **Jeong Jae Yoo**, Incheon (KR); **Jin Ho Park**, Gyeonggi-do (KR); **Hyung Jun Lim**, Gyeonggi-do (KR)

U.S. PATENT DOCUMENTS

5,408,414 A * 4/1995 Nomoto G01C 21/005
342/451

(73) Assignee: **Hyundai Motor Company**, Seoul (KR)

6,437,688 B1 8/2002 Kobayashi
(Continued)

(*) Notice: Subject to any disclaimer, the term of this patent is extended or adjusted under 35 U.S.C. 154(b) by 57 days.

FOREIGN PATENT DOCUMENTS

(21) Appl. No.: **15/182,641**

JP 2000-330637 A 11/2000
JP 2006528106 A 12/2006
(Continued)

(22) Filed: **Jun. 15, 2016**

Primary Examiner — Calvin Cheung

(65) **Prior Publication Data**

US 2017/0274876 A1 Sep. 28, 2017

(74) *Attorney, Agent, or Firm* — Mintz Levin Cohn Ferris Glovsky and Popeo, P.C.; Peter F. Corless

(30) **Foreign Application Priority Data**

Mar. 22, 2016 (KR) 10-2016-0033855

(57) **ABSTRACT**

(51) **Int. Cl.**
B60T 7/22 (2006.01)
B60W 50/14 (2012.01)

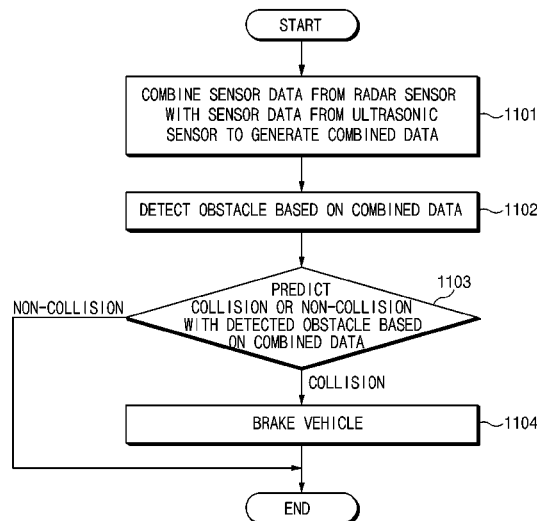
(Continued)

A side collision avoidance system and method for a vehicle combines data from radar sensors mounted on front and rear surfaces of the vehicle with data from ultrasonic sensors mounted on side surfaces of the vehicle, and detects obstacles on the basis of the combined data, so as to increase accuracy in the detection of obstacles and predict the probability of collisions with obstacles with high accuracy. The system includes: radar sensors detecting an obstacle around the vehicle; ultrasonic sensors detecting the obstacle around the vehicle; a controller combining sensor data from the radar sensors with sensor data from the ultrasonic sensors to generate combined data, detecting the obstacle on the basis of the combined data, and predicting collision or non-collision with the detected obstacle on the basis of the combined data; and a brake driver braking the vehicle when the collision is predicted.

(52) **U.S. Cl.**
CPC **B60T 7/22** (2013.01); **B60W 10/18** (2013.01); **B60W 30/08** (2013.01); **B60W 30/095** (2013.01); **B60W 30/0953** (2013.01); **B60W 30/0956** (2013.01); **B60W 50/14** (2013.01); **G01S 13/862** (2013.01); **G01S 13/87** (2013.01); **G01S 13/931** (2013.01); **G01S 15/87** (2013.01); **G01S 15/931** (2013.01);

(Continued)

17 Claims, 11 Drawing Sheets



(51)	Int. Cl.								
	<i>G01S 13/93</i>	(2006.01)		2005/0278098	A1*	12/2005	Breed	B60R 21/0134
	<i>G01S 15/93</i>	(2006.01)							701/45
	<i>G01S 13/86</i>	(2006.01)		2006/0080005	A1*	4/2006	Lee	B60Q 1/22
	<i>B60W 10/18</i>	(2012.01)							701/1
	<i>B60W 30/08</i>	(2012.01)		2007/0063874	A1	3/2007	Danz et al.		
	<i>B60W 30/095</i>	(2012.01)		2009/0125181	A1*	5/2009	Luke	B60C 23/061
	<i>G01S 13/87</i>	(2006.01)							701/36
	<i>G01S 15/87</i>	(2006.01)		2009/0146842	A1	6/2009	Jung		
				2014/0336841	A1	11/2014	Shin et al.		
				2015/0134295	A1*	5/2015	Kim	G01S 19/00
									702/152

(52)	U.S. Cl.								
	CPC ..	<i>B60T 2201/022</i> (2013.01); <i>B60W 2050/143</i> (2013.01); <i>B60W 2420/52</i> (2013.01); <i>B60W 2420/54</i> (2013.01); <i>B60W 2550/10</i> (2013.01); <i>G01S 2013/9332</i> (2013.01); <i>G01S 2013/9346</i> (2013.01); <i>G01S 2013/9375</i> (2013.01); <i>G01S 2013/9378</i> (2013.01); <i>G01S 2015/937</i> (2013.01)		2015/0239437	A1*	8/2015	Ignaczak	B60T 7/22
									701/70
				2016/0075325	A1	3/2016	Kim et al.		
				2017/0210379	A1*	7/2017	Obata	B60W 30/18163

FOREIGN PATENT DOCUMENTS

JP	2008-168851	A	7/2008
JP	2009-244985	A	10/2009
JP	5607410	B2	10/2014
KR	10-0796707	B1	1/2008
KR	10-2009-0042534	A	4/2009
KR	1020090022129	A	4/2009
KR	10-2011-0116777	A	10/2011
KR	1020120094366	A	8/2012
KR	1020130028183	A	3/2013
KR	10-2013-0078382	A	7/2013
KR	10-2014-0118153	A	10/2014
KR	101449175	B1	10/2014
KR	1020140118611	A	10/2014
KR	101477231	B1	12/2014
KR	10-1526815	B1	6/2015

* cited by examiner

(56) **References Cited**

U.S. PATENT DOCUMENTS

8,760,962	B2*	6/2014	Kloss	G01S 7/52004
					367/13
2003/0225546	A1*	12/2003	Alfano	G08G 5/045
					702/150
2004/0024527	A1*	2/2004	Patara	G08G 5/045
					701/301
2004/0047518	A1	3/2004	Tiana		
2004/0181338	A1*	9/2004	Dobler	G08G 1/165
					701/301

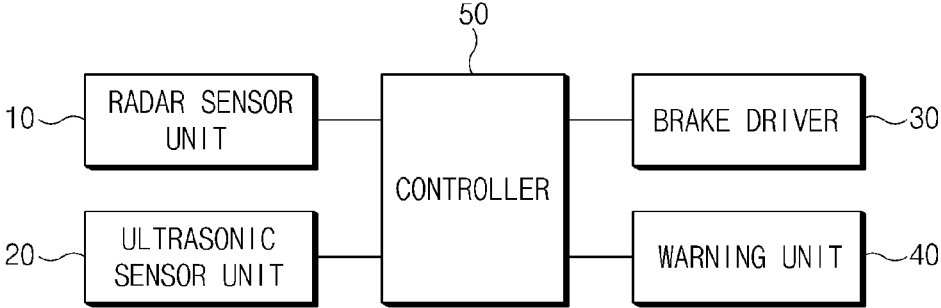


FIG.1

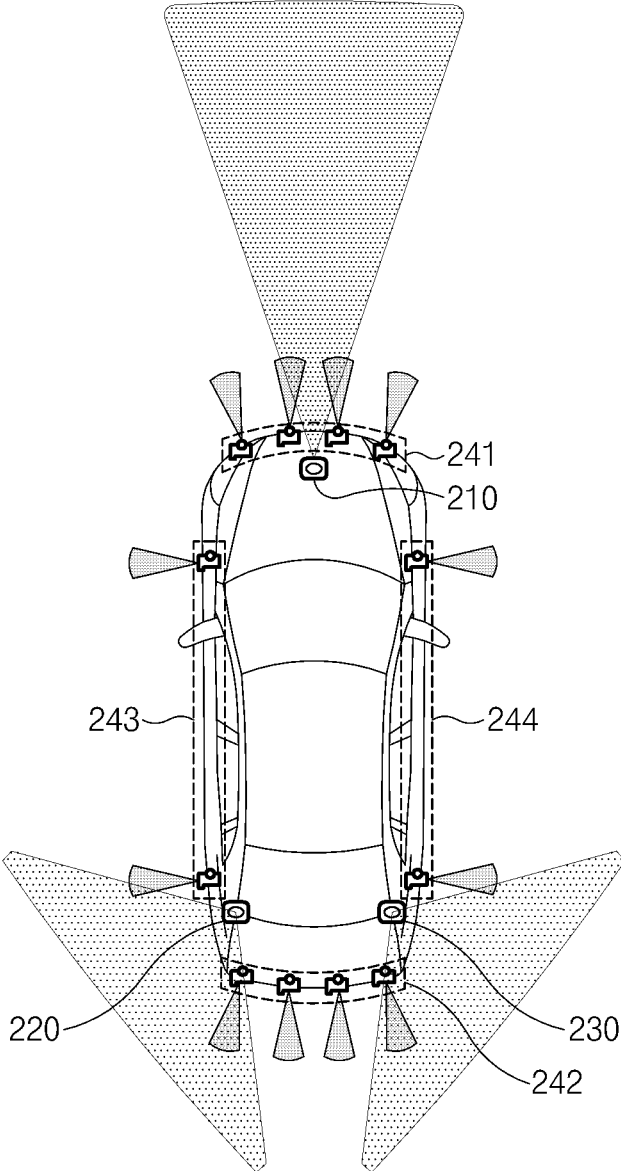


FIG. 2

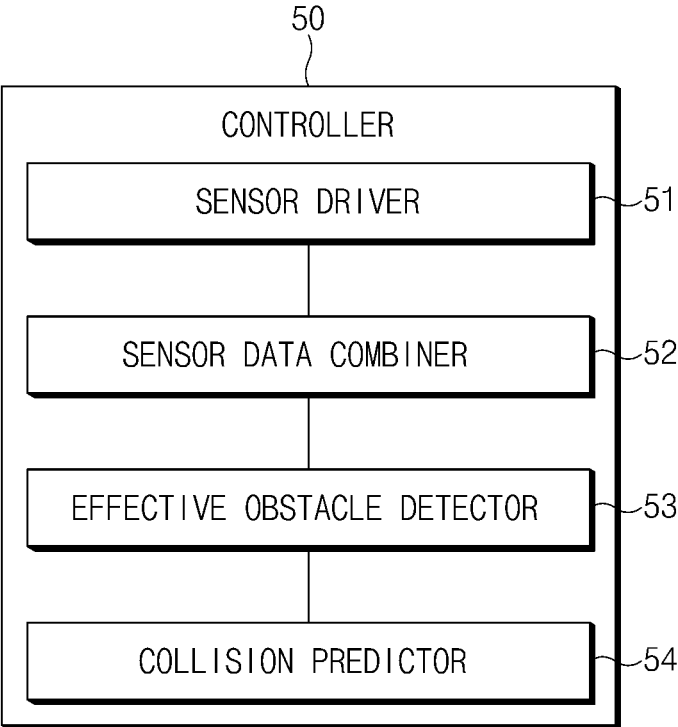


FIG.3

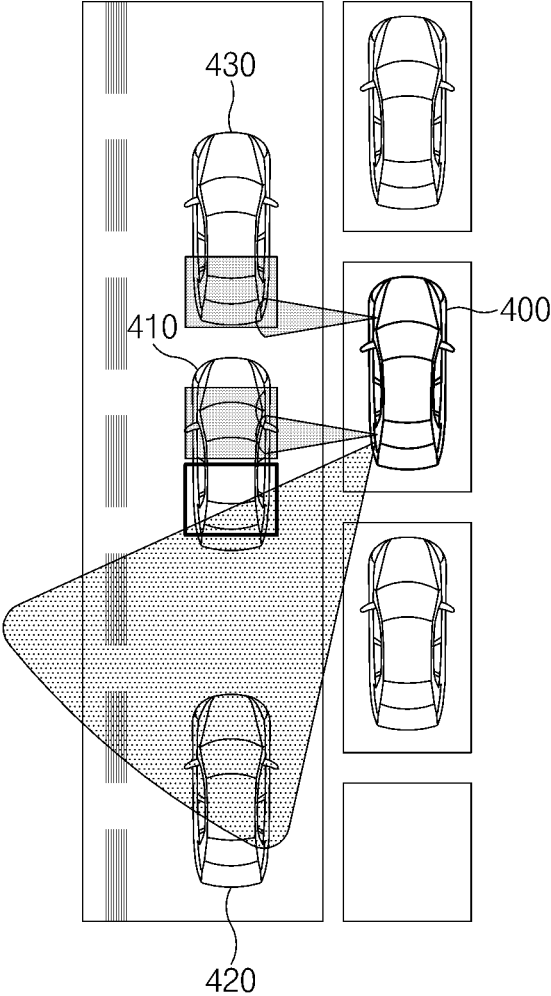


FIG.4

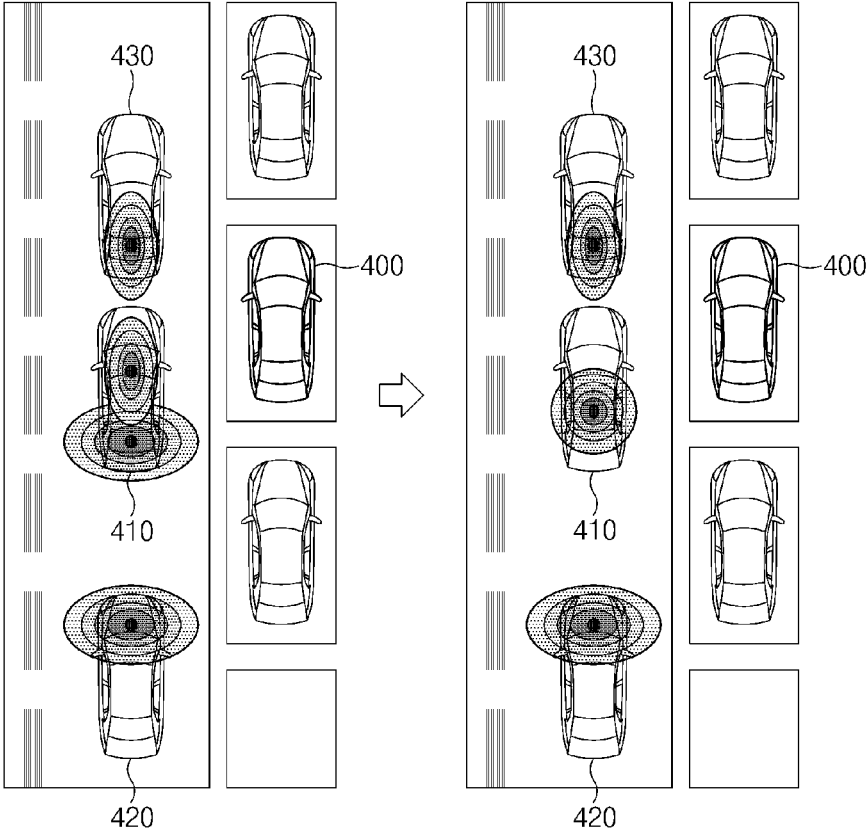


FIG. 5

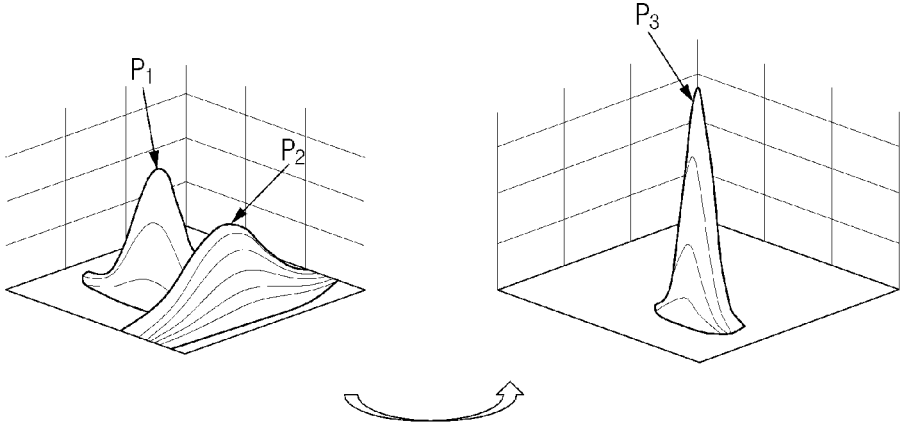


FIG. 6

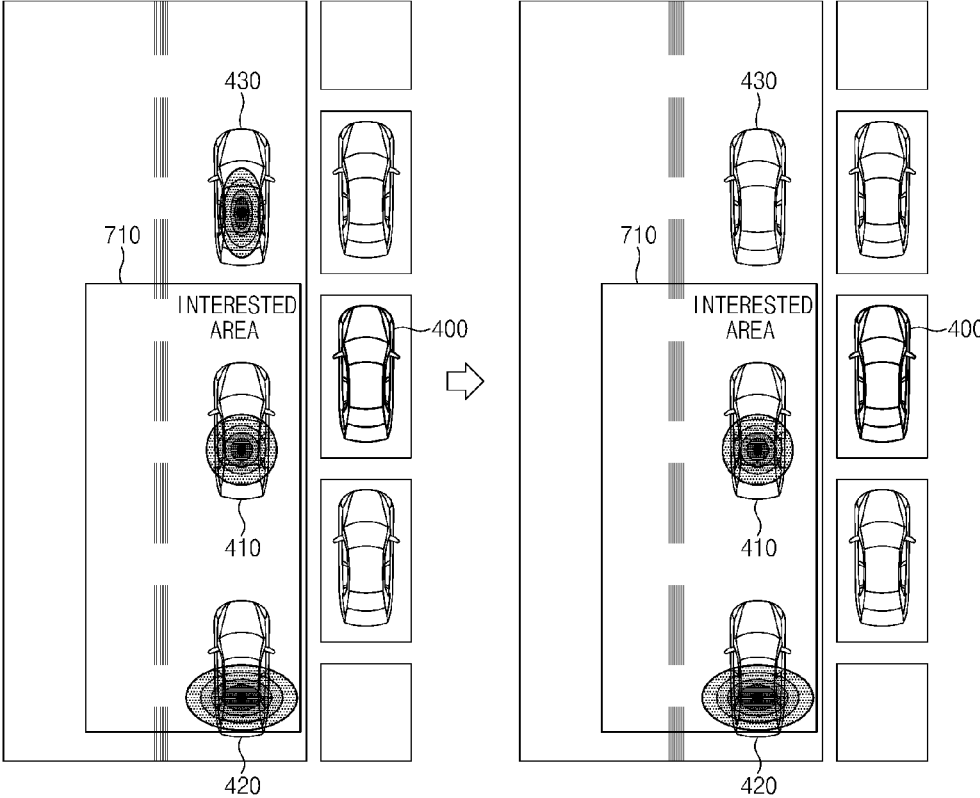


FIG. 7

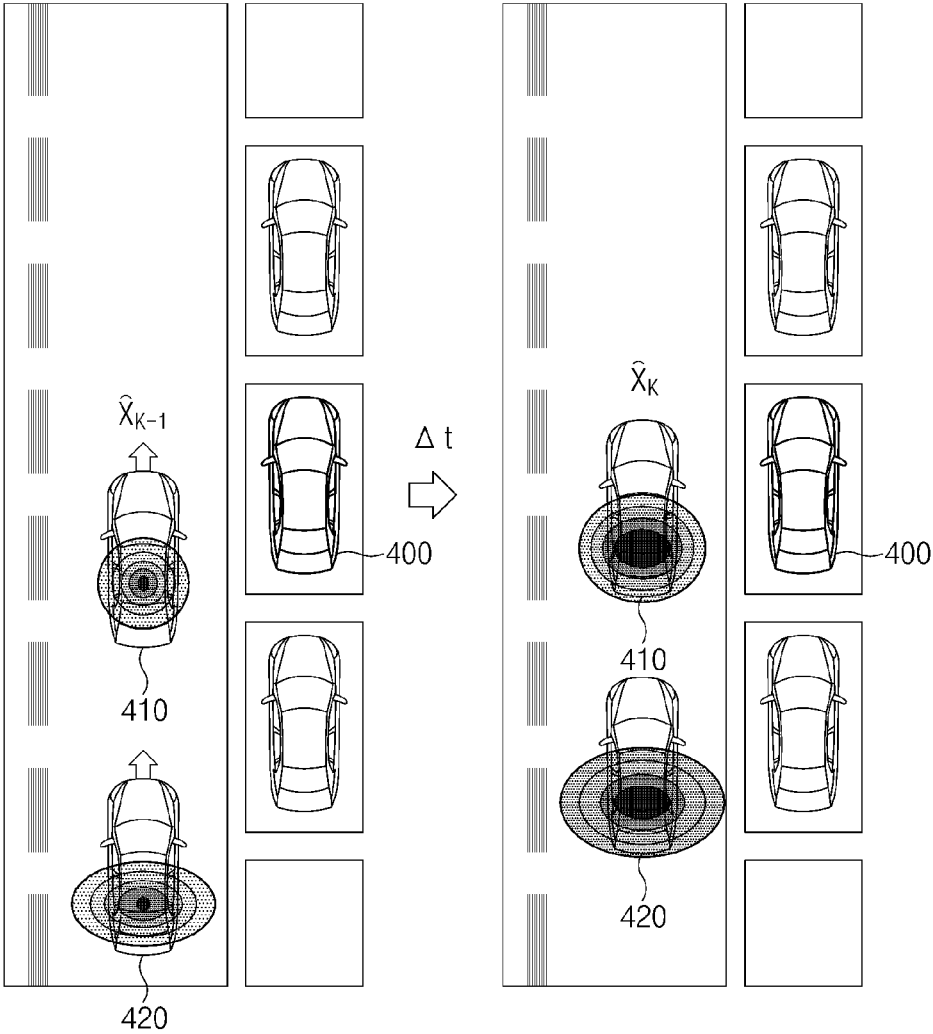


FIG. 8

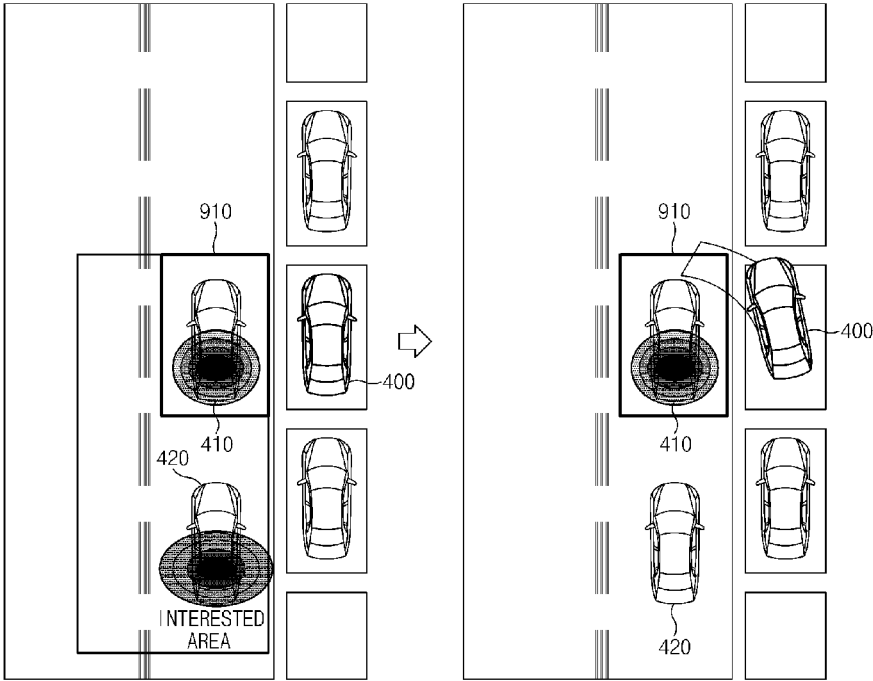


FIG. 9

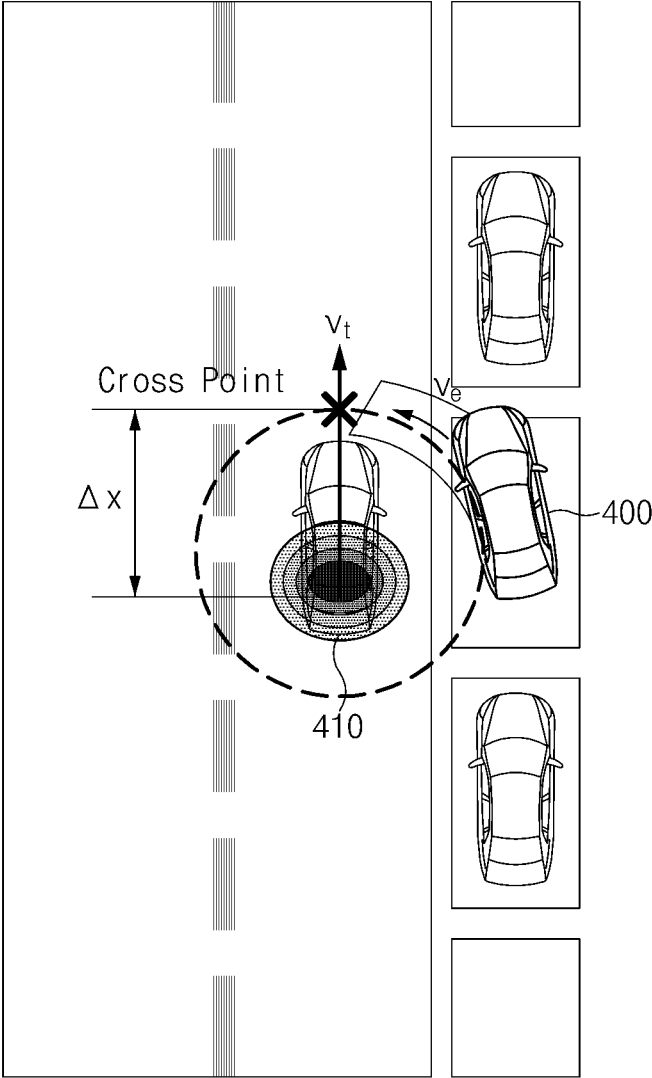


FIG. 10

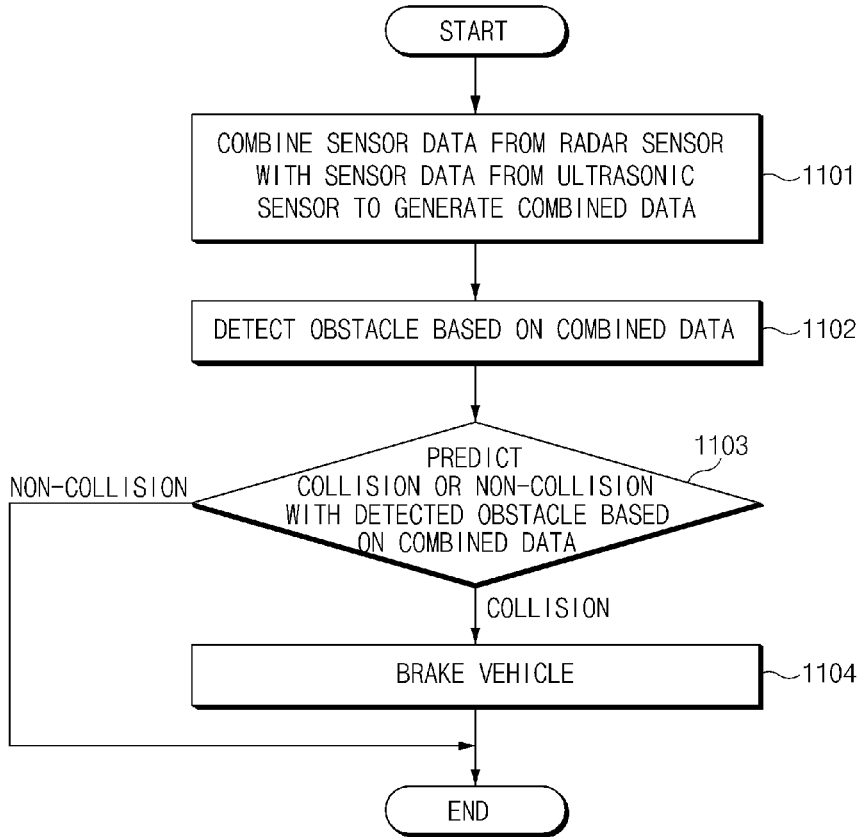


FIG.11

SIDE COLLISION AVOIDANCE SYSTEM AND METHOD FOR VEHICLE

CROSS-REFERENCE TO RELATED APPLICATION

This application claims under 35 U.S.C. § 119(a) the benefit of Korean Patent Application No. 10-2016-0033855, filed on Mar. 22, 2016 in the Korean Intellectual Property Office, the entire contents of which are incorporated by reference herein.

BACKGROUND

(a) Technical Field

The present invention relates to a side collision avoidance system and method for a vehicle, more particularly, to a system and method for increasing accuracy in the detection of obstacles by combining ultrasonic sensor data with radar sensor data and predicting the probability of collisions with obstacles with high accuracy when a vehicle that is parallel parked exits a parking space.

(b) Description of the Related Art

In recent years, traffic congestion and parking problems have worsened in certain geographical areas. As the number of vehicles increases in a particular region, city, and country, available parking spaces are reduced. In order to address the lack of parking spaces, the size of a parking space for a single vehicle may be narrowed.

In addition, when many vehicles are parked in a parking lot even without visible parking markings, distances between vehicles are reduced. In this case, drivers may have difficulties in recognizing surrounding obstacles with the naked eye and maneuvering their vehicles to park in narrow parking spaces or exit the narrow parking spaces.

Accordingly, a smart parking assist system (SPAS) has been mounted in vehicles, and automatic parking or automatic exit technology utilizing images of the surrounding environment captured by the SPAS has been developed. Typically an SPAS automatically steers the vehicle when parking in a parking space, to assist parking or exit procedures.

However, when a vehicle, especially a vehicle that has been parallel parked, exits a parking space by using the SPAS, objects present at the left and right sides of the vehicle may not be detected, thereby resulting in collisions. Accordingly, it is necessary to detect the objects present at the left and right sides of the vehicle in order to allow the vehicle to exit the parking space safely and conveniently.

Conventionally, side collision avoidance technology uses radar sensors mounted on the rear of a vehicle so as to detect vehicles approaching from behind and output rear vehicle detection signals. In addition, such technology may utilize a plurality of ultrasonic sensors mounted on the sides of the vehicle so as to detect vehicles approaching from the sides and output side vehicle detection signals, where this technology may detect obstacles on the basis of the output signals of the sensors.

Since the conventional side collision avoidance technology uses radar sensor data and ultrasonic sensor data independently to detect obstacles, complementary functions of respective sensors may not be utilized, and thus accuracy in the detection of obstacles may be reduced. In addition, it may be difficult to predict the probability of collisions with obstacles with high accuracy.

SUMMARY

An aspect of the present invention provides a side collision avoidance system and method for a vehicle configured

to combine data from radar sensors mounted on front and rear surfaces of the vehicle with data from ultrasonic sensors mounted on side surfaces of the vehicle so as to detect obstacles on the basis of the combined data, thereby increasing accuracy in the detection of obstacles and predicting the probability of collisions with obstacles with high accuracy.

The objects of the present invention are not limited to the foregoing objects, and any other objects and advantages not mentioned herein will be clearly understood from the following description. The present inventive concept will be more clearly understood from exemplary embodiments of the present invention. In addition, it will be apparent that the objects and advantages of the present invention can be achieved by elements and features claimed in the claims and a combination thereof.

According to an aspect of the present invention, a side collision avoidance system for a vehicle includes: a plurality of radar sensors configured to detect an obstacle around the vehicle; a plurality of ultrasonic sensors configured to detect the obstacle around the vehicle; a controller combining sensor data from the radar sensors with sensor data from the ultrasonic sensors to generate combined data, detecting the obstacle on the basis of the combined data, and predicting collision or non-collision with the detected obstacle on the basis of the combined data; and a brake driver configured to brake the vehicle when the collision is predicted.

According to another aspect of the present invention, a side collision avoidance method for a vehicle includes steps of: generating, by a controller, combined data by combining sensor data from radar sensors with sensor data from ultrasonic sensors; detecting, by the controller, an obstacle on the basis of the combined data; predicting, by the controller, collision or non-collision with the detected obstacle on the basis of the combined data; and braking, by a brake driver, the vehicle when the collision is predicted.

BRIEF DESCRIPTION OF THE DRAWINGS

The above and other objects, features and advantages of the present invention will be more apparent from the following detailed description taken in conjunction with the accompanying drawings:

FIG. 1 is a block diagram of a side collision avoidance system for a vehicle, according to an exemplary embodiment of the present invention;

FIG. 2 is a top schematic view of a vehicle including positions of radar sensors and ultrasonic sensors mounted in the vehicle, according to an exemplary embodiment of the present invention;

FIG. 3 is a block diagram of a controller that controls a side collision avoidance system of a vehicle, according to an exemplary embodiment of the present invention;

FIG. 4 is a schematic diagram of a vehicle including obstacles detected by sensors, according to an exemplary embodiment of the present invention;

FIG. 5 is a schematic diagram of a vehicle including results of combining radar sensor data with ultrasonic sensor data, according to an exemplary embodiment of the present invention;

FIG. 6 illustrates graphs with details of results of combining radar sensor data with ultrasonic sensor data, according to an exemplary embodiment of the present invention;

FIG. 7 schematically illustrates an interested area among results of combined sensor data, according to an exemplary embodiment of the present invention;

3

FIG. 8 schematically illustrates results of estimating positions of obstacles, according to an exemplary embodiment of the present invention;

FIG. 9 schematically illustrates a potential collision area, according to an exemplary embodiment of the present invention;

FIG. 10 schematically illustrates a process of calculating a collision probability with respect to a final obstacle on the basis of a standard deviation of covariance of combined data, according to an exemplary embodiment of the present invention; and

FIG. 11 is a flowchart of a side collision avoidance method for a vehicle, according to an exemplary embodiment of the present invention.

DETAILED DESCRIPTION

It is understood that the term “vehicle” or “vehicular” or other similar term as used herein is inclusive of motor vehicles in general such as passenger automobiles including sports utility vehicles (SUV), buses, trucks, various commercial vehicles, watercraft including a variety of boats and ships, aircraft, and the like, and includes hybrid vehicles, electric vehicles, plug-in hybrid electric vehicles, hydrogen-powered vehicles and other alternative fuel vehicles (e.g. fuels derived from resources other than petroleum). As referred to herein, a hybrid vehicle is a vehicle that has two or more sources of power, for example both gasoline-powered and electric-powered vehicles.

The terminology used herein is for the purpose of describing particular embodiments only and is not intended to be limiting of the invention. As used herein, the singular forms “a,” “an” and “the” are intended to include the plural forms as well, unless the context clearly indicates otherwise. It will be further understood that the terms “comprises” and/or “comprising,” when used in this specification, specify the presence of stated features, integers, steps, operations, elements, and/or components, but do not preclude the presence or addition of one or more other features, integers, steps, operations, elements, components, and/or groups thereof. As used herein, the term “and/or” includes any and all combinations of one or more of the associated listed items. Throughout the specification, unless explicitly described to the contrary, the word “comprise” and variations such as “comprises” or “comprising” will be understood to imply the inclusion of stated elements but not the exclusion of any other elements. In addition, the terms “unit”, “-er”, “-or”, and “module” described in the specification mean units for processing at least one function and operation, and can be implemented by hardware components or software components and combinations thereof.

Further, the control logic of the present invention may be embodied as non-transitory computer readable media on a computer readable medium containing executable program instructions executed by a processor, controller or the like. Examples of computer readable media include, but are not limited to, ROM, RAM, compact disc (CD)-ROMs, magnetic tapes, floppy disks, flash drives, smart cards and optical data storage devices. The computer readable medium can also be distributed in network coupled computer systems so that the computer readable media is stored and executed in a distributed fashion, e.g., by a telematics server or a Controller Area Network (CAN).

The above and other objects, features and advantages of the present invention will be more clearly understood from the following detailed description taken in conjunction with the accompanying drawings so that those skilled in the art to

4

which the present invention pertains can easily carry out technical ideas described herein. In addition, a detailed description of well-known techniques associated with the present invention will be ruled out in order not to unnecessarily obscure the gist of the present invention. Hereinafter, exemplary embodiments of the present invention will be described in detail with reference to the accompanying drawings.

FIG. 1 illustrates the configuration of a side collision avoidance system for a vehicle, according to an exemplary embodiment of the present invention.

As illustrated in FIG. 1, the side collision avoidance system for a vehicle, according to the exemplary embodiment of the present invention, includes a radar sensor unit 10, an ultrasonic sensor unit 20, a brake driver 30, a warning unit 40, and a controller 50.

With respect to each of the aforementioned elements, first, the radar sensor unit 10 may detect obstacles positioned in front of and behind a vehicle. As illustrated in FIG. 2, a plurality of radar sensors 210, 220, and 230 may be mounted in the vehicle.

The radar sensor 210 mounted on a front surface of the vehicle may detect obstacles positioned in front of the vehicle. The radar sensor 220 mounted on the left side of a rear surface of the vehicle may detect obstacles positioned at the left side of and behind the vehicle. The radar sensor 230 mounted on the right side of the rear surface of the vehicle may detect obstacles positioned at the right side of and behind the vehicle.

Next, the ultrasonic sensor unit 20 may detect obstacles positioned in front of and behind the vehicle and positioned at the left and right sides of the vehicle. As illustrated in FIG. 2, a plurality of ultrasonic sensors 241, 242, 243, and 244 may be mounted in the vehicle. In particular, the ultrasonic sensor 243 mounted on a left side surface of the vehicle includes a front ultrasonic sensor and a rear ultrasonic sensor, and the ultrasonic sensor 244 mounted on a right side surface of the vehicle also includes a front ultrasonic sensor and a rear ultrasonic sensor.

The plurality of ultrasonic sensors 241 mounted on the front surface of the vehicle may detect obstacles positioned in front of the vehicle, and the plurality of ultrasonic sensors 242 mounted on the rear surface of the vehicle may detect obstacles positioned behind the vehicle.

In addition, the plurality of ultrasonic sensors 243 mounted on the left side surface of the vehicle may detect obstacles positioned at the left side of the vehicle, and the plurality of ultrasonic sensors 244 mounted on the right side surface of the vehicle may detect obstacles positioned at the right side of the vehicle.

As illustrated in FIG. 2, since the radar sensors 210, 220, and 230 have wide and long-range detection areas, they may measure distances to obstacles that are distant from the vehicle, and relative velocities of the corresponding obstacles with respect to the velocity of the vehicle. Since the ultrasonic sensors 241, 242, 243, and 244 have narrow and short-range detection areas, they may measure distances to obstacles that are close to the vehicle, and relative velocities of the corresponding obstacles with respect to the velocity of the vehicle. In addition, the radar sensors 210, 220, and 230 and the ultrasonic sensors 241, 242, 243, and 244 may measure the positions of the obstacles.

Therefore, when other vehicles are positioned at the left side of the vehicle, they may be detected by all of the radar sensor 220 and the ultrasonic sensors 243, and when other vehicles are positioned at the right side of the vehicle, they may be detected by all of the radar sensor 230 and the

ultrasonic sensors **244**. That is, some of the other vehicles may be present in an overlapped detection area of the radar sensor and the ultrasonic sensors.

Meanwhile, since technology for avoiding a side collision when a vehicle that is parallel parked exits a parking space is primarily described in exemplary embodiments of the present invention, a first sensor group including the left side ultrasonic sensor **243** and the left rear radar sensor **220** and a second sensor group including the right side ultrasonic sensor **244** and the right rear radar sensor **230** may mainly be used. In reality, when a vehicle that is parallel parked exits a parking space, it is obvious to avoid the collisions of other vehicles parked in front of and behind the vehicle, and thus, all of the plurality of ultrasonic sensors **241** mounted on the front surface of the vehicle and the plurality of ultrasonic sensors **242** mounted on the rear surface of the vehicle, as well as the radar sensor **210** mounted on the front surface of the vehicle, may also be used.

The side collision avoidance technology in exemplary embodiments of the present invention is used to avoid side collisions when a vehicle that is parallel parked exits a parking space, but is not limited thereto. For example, the technology may also be used to avoid side collisions when the vehicle is travelling. Further, the technology may be applied in other parking situations, e.g., when the vehicle is parked in a parking lot with other vehicles in a plurality of parallel or diagonal rows.

The brake driver **30** may drive a brake under control of the controller **50**.

The warning unit **40** may output an alarm under control of the controller **50**.

The controller **50** generally controls the aforementioned respective elements to perform the functions thereof normally.

In particular, the controller **50** may combine sensor data from the radar sensor mounted on the rear surface of the vehicle with sensor data from the ultrasonic sensor mounted on the side surface of the vehicle to generate the combined data, detect an obstacle on the basis of the combined data, and predict whether or not the vehicle collides with the detected obstacle on the basis of the combined data.

In addition, when the collision with the obstacle is predicted, the controller **50** may control the brake driver **30** to stop the vehicle.

In addition, when the collision with the obstacle is predicted, the controller **50** may control the warning unit **40** to warn a driver of the predicted collision.

In addition, when the collision with the obstacle is predicted, the controller **50** may control the brake driver **30** to stop the vehicle, and then control the warning unit **40** to warn the driver of the predicted collision.

Hereinafter, the configuration of the controller **50** will be detailed with reference to FIG. 3.

FIG. 3 illustrates the detailed configuration of a controller that controls a side collision avoidance system of a vehicle, according to an exemplary embodiment of the present invention.

As illustrated in FIG. 3, the controller **50**, according to the exemplary embodiment of the present invention, includes a sensor driver **51**, a sensor data combiner **52**, an effective obstacle detector **53**, and a collision predictor **54**.

With respect to each of the aforementioned elements, first, the sensor driver **51** may determine whether a vehicle that is parallel parked is in a left-side exit mode or in a right-side exit mode when exiting a parking space, and activate a sensor group corresponding to the determined exit mode. Here, the sensor driver **51** may receive the input of a driver

to determine the left-side exit mode or the right-side exit mode, and may also be interlocked with a smart parking assist system (SPAS) mounted in the vehicle to determine the left-side exit mode or the right-side exit mode. Here, the sensor driver **51** may obtain information from an in-vehicle network system. The in-vehicle network system includes a controller area network (CAN), a local interconnect network (LIN), a FlexRay network, and a media oriented system transport (MOST).

For example, the sensor driver **51** may drive the first sensor group including the left side ultrasonic sensor **243** and the left rear radar sensor **220** in the left-side exit mode, and may drive the second sensor group including the right side ultrasonic sensor **244** and the right rear radar sensor **230** in the right-side exit mode.

Obstacles detected by the first sensor group activated by the sensor driver **51** are illustrated by way of example in FIG. 4.

In FIG. 4, “**410**”, “**420**”, and “**430**” indicate other vehicles positioned at the left side and left rear of a vehicle **400**. The vehicle **420** may be detected by the left rear radar sensor **220**; the vehicle **430** may be detected by the left side ultrasonic sensor **243**; and the vehicle **410** may be detected by the left rear radar sensor **220** and the left side ultrasonic sensor **243**. Here, since the vehicle **410** is detected by the left rear radar sensor **220** and the left side ultrasonic sensor **243**, it may be detected with high accuracy through the combination of radar sensor data and ultrasonic sensor data.

Next, the sensor data combiner **52** may combine sensor data from the radar sensor unit **10** with sensor data from the ultrasonic sensor unit **20**.

In other words, the sensor data combiner **52** may combine the radar sensor data with the ultrasonic sensor data on the basis of the following Equation 1 to generate the combined data:

$$\begin{aligned} \bar{X}_3 &= \bar{X}_1 + \lambda(\bar{X}_2 - \bar{X}_1) \\ P_3 &= P_1 - (P_1 - P_{1/2})U^{-1/2}(P_1 - P_{1/2})^T \end{aligned} \quad \text{Equation 1}$$

Here, \bar{X}_1 is ultrasonic sensor data indicating a position of an obstacle, \bar{X}_2 is radar sensor data indicating a position of an obstacle, and \bar{X}_3 is combined data indicating a position of an obstacle.

In addition, P_1 indicates covariance of ultrasonic sensor data, P_2 indicates covariance of radar sensor data, P_3 indicates covariance of combined data, and $P_{1/2}$ indicates cross covariance of ultrasonic sensor data and radar sensor data.

In addition, $\lambda = (P_1 - P_{1/2})U^{-1/2}$, $U_{1/2} = P_1 + P_2 - P_{1/2}$, and $P_{1/2} = \rho\sqrt{P_1 \cdot P_2}$ may be satisfied. Here, ρ indicates an effective correlation coefficient (for example, 0.4).

Meanwhile, the sensor data with respect to the vehicles **410**, **420**, and **430** detected by the left side ultrasonic sensor **243** and/or the left rear radar sensor **220** in FIG. 4 may be illustrated as a left-side image of FIG. 5 on the basis of reliability of the corresponding sensors.

In order words, the image of the vehicle **410** detected by the left side ultrasonic sensor **243** may be illustrated as an ellipsoidal shape (hereinafter, a “first ellipse”) of which the top and bottom are long, and the image of the vehicle **420** detected by the left rear radar sensor **220** may be illustrated as an ellipsoidal shape (hereinafter, a “second ellipse”) of which the left and right sides are long. Here, an area of the second ellipse is larger than that of the first ellipse.

The sensor data combined by the sensor data combiner **52** may be illustrated as a right-side image of FIG. 5. In other words, the first ellipse and the second ellipse may be

combined and illustrated as a single circular shape. Since a size of the circle is similar to a width of the vehicle, the obstacle (vehicle) may be detected accurately.

This is further detailed with reference to FIG. 6. The covariance P_1 of the ultrasonic sensor data and the covariance P_2 of the radar sensor data may be combined on the basis of the above Equation 1 to get the covariance P_3 of the combined data.

As illustrated in FIG. 6, a peak of the combined data is higher than that of the ultrasonic sensor data and the radar sensor data. Therefore, the obstacle may be detected with high accuracy by using the combined data.

Next, the effective obstacle detector **53** may detect obstacles on the basis of the data (hereinafter, “the combined data”) combined by the sensor data combiner **52**, and may detect obstacles positioned in an interested area **710** among the detected obstacles as effective obstacles. Here, the interested area **710** may be a predetermined area which is illustrated in FIG. 7. Since the vehicle **430** is not positioned in the interested area **710**, it is not considered to be an effective obstacle. The vehicles **410** and **420** are the effective obstacles.

In addition, the effective obstacle detector **53** may continuously predict the positions of the obstacles positioned in the interested area **710**.

In particular, even when the sensor data from the radar sensors and the sensor data from the ultrasonic sensors are not continuously transmitted, the effective obstacle detector **53** may predict the positions of the obstacles on the basis of Equation 2 and Equation 3.

In other words, the effective obstacle detector **53** may estimate the positions of the obstacles according to time on the basis of Equation 2. The estimated positions of the obstacles are illustrated in FIG. 8.

$$\hat{X}_k = F_{k-1} \hat{X}_{k-1} + G_k W_k \quad \text{Equation 2}$$

Here, \hat{X}_k indicates an estimated position of an obstacle at a point in time k , \hat{X}_{k-1} indicates an estimated position of the obstacle at a point in time $k-1$, F indicates an obstacle state change mathematical model, G indicates an input model related to the state change, and W indicates a system input (noise and the like).

In addition, the effective obstacle detector **53** may update the covariance on the basis of the following Equation 3:

$$P_k = F_{k-1} P_{k-1} F_{k-1}^T + R_{k-1} \quad \text{Equation 3}$$

Here, P_k indicates covariance at the point in time k , P_{k-1} indicates covariance at the point in time $k-1$, and R_w indicates model error covariance.

In addition, the effective obstacle detector **53** may determine whether or not the obstacle is positioned in the interested area, on the basis of Equation 4. In other words, it may be determined that the obstacle is out of the interested area when satisfying the following Equation 4:

$$\sqrt{\text{tr}(P_k)} > P_{limit} \quad \text{Equation 4}$$

Here, P_{limit} indicates an upper limit (threshold value) of valid covariance, and tr indicates a function for calculating the addition or subtraction of respective components in a matrix.

In such a technique for predicting the positions of the obstacles according to time, a transmission cycle of data from the sensors may be 100 ms. However, it may also be used to predict the positions of the obstacles with a transmission cycle of 50 ms.

Next, the collision predictor **54** may detect, as a final obstacle, an obstacle positioned in a potential collision area

910 among the effective obstacles detected by the effective obstacle detector **53**. In other words, the collision predictor **54** may detect the vehicle **410** positioned in the potential collision area **910** as illustrated in FIG. 9.

The collision predictor **54** may predict collision or non-collision with the final obstacle, according to a collision probability with the final obstacle on the basis of a standard deviation of the covariance of the combined data. In other words, the collision predictor **54** may calculate the standard deviation using the covariance of the combined data generated by the sensor data combiner **52**, calculate the collision probability in consideration of the calculated standard deviation, and predict the collision with the final obstacle when the calculated collision probability exceeds a reference value.

With reference to FIG. 10, the collision predictor **54** may calculate the collision probability D with respect to the final obstacle on the basis of the standard deviation of the covariance of the combined data by using the following Equation 5:

$$D(t_{inv}) = \exp\left(-\frac{(t_{inv} - \bar{t}_{inv}^{dan})^2}{2\sigma_t^2}\right) \quad \text{Equation 5}$$

Here, t_{inv} is an inverse number of TTC (Time To Collision), and satisfies

$$t_{inv} = TTC^{-1} = \frac{v_e - v_t}{\Delta x}$$

Here, v_e indicates a velocity of a vehicle (the vehicle **400**), v_t indicates a velocity of an obstacle (the vehicle **410**), and Δx indicates a distance to collision.

In addition, \bar{t}_{inv}^{dan} indicates a criterion t_{inv} (critical time) for determining collision risk, and σ_t indicates the standard deviation of the covariance of the combined data.

By applying σ_t to Equation 5, the collision probability with the obstacle may be predicted with high accuracy.

In the exemplary embodiments of the present invention, the side collision avoidance system that is configured as a single independent system is described by way of example. However, the functions of the side collision avoidance system may be added to the well-known SPAS.

FIG. 11 illustrates a flowchart of a side collision avoidance method for a vehicle, according to an exemplary embodiment of the present invention.

First of all, the controller **50** may combine sensor data (hereinafter, “radar sensor data”) from the radar sensor with sensor data from the ultrasonic sensor (hereinafter, “ultrasonic sensor data”) to generate combined data in operation **1101**.

Next, the controller **50** may detect an obstacle on the basis of the combined data in operation **1102**.

Thereafter, the controller **50** may predict collision or non-collision with the detected obstacle on the basis of the combined data in operation **1103**.

Then, when the collision is predicted, the brake driver may brake the vehicle in operation **1104**.

Meanwhile, the above-stated method according to the exemplary embodiment of the present invention may be written as a computer program. Codes and code segments constituting the program may easily be inferred by a computer programmer skilled in the art. In addition, the written

program may be stored in a computer-readable recording medium (an information storage medium) and be read and executed by a computer, thereby implementing the method according to the exemplary embodiment of the present invention. The recording medium includes all types of computer-readable recording media.

As set forth above, the side collision avoidance system and method for a vehicle may combine data from radar sensors mounted on the front and rear surfaces of the vehicle with data from ultrasonic sensors mounted on the side surfaces of the vehicle and detect obstacles on the basis of the combined data, thereby increasing accuracy in the detection of obstacles and predicting the probability of collisions with obstacles with high accuracy.

In addition, the side collision avoidance system may provide optimal performance by allowing the radar sensors and the ultrasonic sensors to complement each other against the disadvantages thereof.

Furthermore, the present inventive concept may be applied to an SPAS, a blind spot detection (BSD) system, a rear cross traffic alert (RCTA) system, a smart cruise control (SCC) system, and the like, to thereby improve performance.

Hereinabove, although the present invention has been described with reference to exemplary embodiments and the accompanying drawings, the present invention is not limited thereto, but may be variously modified and altered by those skilled in the art to which the present invention pertains without departing from the spirit and scope of the present invention claimed in the following claims.

What is claimed is:

1. A side collision avoidance system for a vehicle, comprising:

a plurality of radar sensors configured to detect an obstacle around the vehicle;

a plurality of ultrasonic sensors configured to detect the obstacle around the vehicle;

a controller configured to:

combine radar sensor data from the radar sensors with ultrasonic sensor data from the ultrasonic sensors to generate combined data;

detect the obstacle on the basis of the combined data; and

predict collision or non-collision with the detected obstacle on the basis of the combined data; and

a brake driver configured to brake the vehicle when the collision is predicted,

wherein the controller generates covariance of the radar sensor data, covariance of the ultrasonic sensor data, and covariance of the combined data on the basis of cross-covariance of the ultrasonic sensor data and the radar sensor data.

2. The side collision avoidance system according to claim **1**, further comprising a warning unit outputting an alarm when the collision is predicted.

3. The side collision avoidance system according to claim **1**, wherein the controller calculates a collision probability with the obstacle in consideration of a standard deviation of the covariance of the combined data, and predicts the collision or non-collision with the detected obstacle on the basis of the calculated collision probability.

4. The side collision avoidance system according to claim **1**, wherein the controller comprises:

a sensor driver driving a radar sensor and an ultrasonic sensor provided in a direction that is determined according to a left-side or right-side exit mode of the vehicle that is parallel parked;

a sensor data combiner combining the radar sensor data with the ultrasonic sensor data;

an effective obstacle detector detecting a plurality of obstacles on the basis of the combined data and detecting the plurality of obstacles positioned in an interested area among the detected plurality of obstacles as effective obstacles; and

a collision predictor detecting the obstacle positioned in a potential collision area among the effective obstacles detected by the effective obstacle detector as a final obstacle, and calculating a collision probability with the final obstacle to predict collision or non-collision.

5. The side collision avoidance system according to claim **4**, wherein the sensor driver determines the left-side or right-side exit mode through at least one of a controller area network (CAN), a local interconnect network (LIN), a FlexRay network, and a media oriented system transport (MOST).

6. The side collision avoidance system according to claim **4**, wherein the sensor data combiner generates covariance of the radar sensor data, covariance of the ultrasonic sensor data, and covariance of the combined data on the basis of cross-covariance of the ultrasonic sensor data and the radar sensor data.

7. The side collision avoidance system according to claim **4**, wherein the effective obstacle detector continuously detects whether or not the effective obstacles are out of the interested area, on the basis of mathematical models of obstacle state changes.

8. The side collision avoidance system according to claim **4**, wherein the collision predictor calculates the collision probability with the obstacle in consideration of a standard deviation of the covariance of the combined data, and predicts the collision or non-collision with the obstacle on the basis of the calculated collision probability.

9. The side collision avoidance system according to claim **8**, wherein the collision predictor calculates the collision probability (D) with the obstacle on the basis of the standard deviation of the covariance of the combined data by using the following equation:

$$D(t_{inv}) = \exp\left(-\frac{(t_{inv} - \bar{t}_{inv}^{dan})^2}{2\sigma_t^2}\right)$$

$$t_{inv} = TTC^{-1} = \frac{v_e - v_t}{\Delta x}$$

where v_e indicates a velocity of the vehicle,

v_t indicates a velocity of the final obstacle,

Δx indicates a distance to collision,

\bar{t}_{inv}^{dan} indicates a threshold time, and

σ_t indicates the standard deviation of the covariance of the combined data.

10. A side collision avoidance method for a vehicle, comprising the steps of:

generating, by a controller, combined data by combining sensor data from radar sensors with sensor data from ultrasonic sensors;

detecting, by the controller, an obstacle on the basis of the combined data;

predicting, by the controller, collision or non-collision with the detected obstacle on the basis of the combined data; and

braking, by a brake driver, the vehicle when the collision is predicted,

11

wherein the step of generating the combined data further comprises generating covariance of the radar sensor data, covariance of the ultrasonic sensor data, and covariance of the combined data on the basis of cross-covariance of the ultrasonic sensor data and the radar sensor data.

11. The side collision avoidance method according to claim 10, further comprising the step of:
outputting an alarm when the collision is predicted.

12. The side collision avoidance method according to claim 10, further comprising driving, by the controller, one of the radar sensors and one of the ultrasonic sensors provided in a direction that is determined according to a left-side or right-side exit mode of the vehicle that is parallel parked, before the step of generating the combined data.

13. The side collision avoidance method according to claim 10, wherein the step of detecting the obstacle comprises detecting a plurality of obstacles on the basis of the combined data, and detecting the plurality of obstacles positioned in an interested area among the detected obstacles as effective obstacles.

14. The side collision avoidance method according to claim 13, wherein the step of detecting the obstacle comprises continuously detecting whether or not the effective obstacles are out of the interested area, on the basis of mathematical models of obstacle state changes.

15. The side collision avoidance method according to claim 13, wherein the step of predicting the collision or non-collision comprises detecting an obstacle positioned in

12

a potential collision area among the effective obstacles as a final obstacle, and calculating a collision probability with the final obstacle to predict collision or non-collision.

16. The side collision avoidance method according to claim 15, wherein the step of predicting the collision or non-collision comprises calculating the collision probability with the final obstacle in consideration of a standard deviation of the covariance of the combined data.

17. The side collision avoidance method according to claim 16, wherein the step of predicting the collision or non-collision comprises calculating the collision probability (D) with the final obstacle on the basis of the standard deviation of the covariance of the combined data by using the following equation:

$$D(t_{inv}) = \exp\left(-\frac{(t_{inv} - \bar{t}_{inv}^{dan})^2}{2\sigma_t^2}\right)$$

$$t_{inv} = TTC^{-1} = \frac{v_e - v_t}{\Delta x}$$

where v_e indicates a velocity of the vehicle,
 v_t indicates a velocity of the final obstacle,
 Δx indicates a distance to collision,
 \bar{t}_{inv}^{dan} indicates a threshold time, and
 σ_t indicates the standard deviation of the covariance of the combined data.

* * * * *